



PARKING UNIT Recommendations

JANUARY 2023



PARKING RECOMMENDATIONS

The following Parking Enforcement Unit recommendations would amend our current parking code and introduce/adjust certain parking fees in the fee booklet.

The changes will enable the Parking Enforcement Unit to:

- manage the citation life cycle, from issuance to adjudication
- quickly identify and "boot" scofflaws for collection of unpaid parking citations
- incorporate the services of a Special Magistrate to hear appeals
- eliminate the expense of a 3rd party to manage the citation process

Collections and revenue enhancements, if implemented, are projected to generate \$877,000 in annual revenue.



ENFORCEMENT RECOMMENDATIONS



QUALITY OF LIFE ISSUES





QUALITY OF LIFE ISSUES





FINE INCREASE

Introduce a higher fine amount for oversize vehicles.

Vehicles with 2 axles - **\$150.00**

Vehicles with 2+ axles - **\$250.00**



QUALITY OF LIFE ISSUES



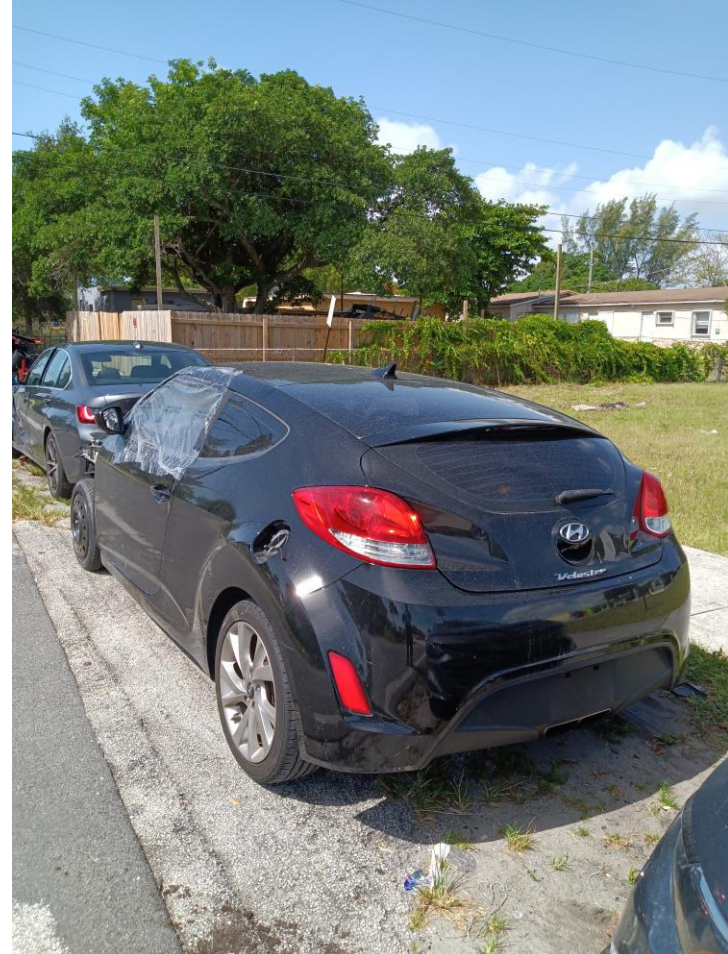


QUALITY OF LIFE ISSUES



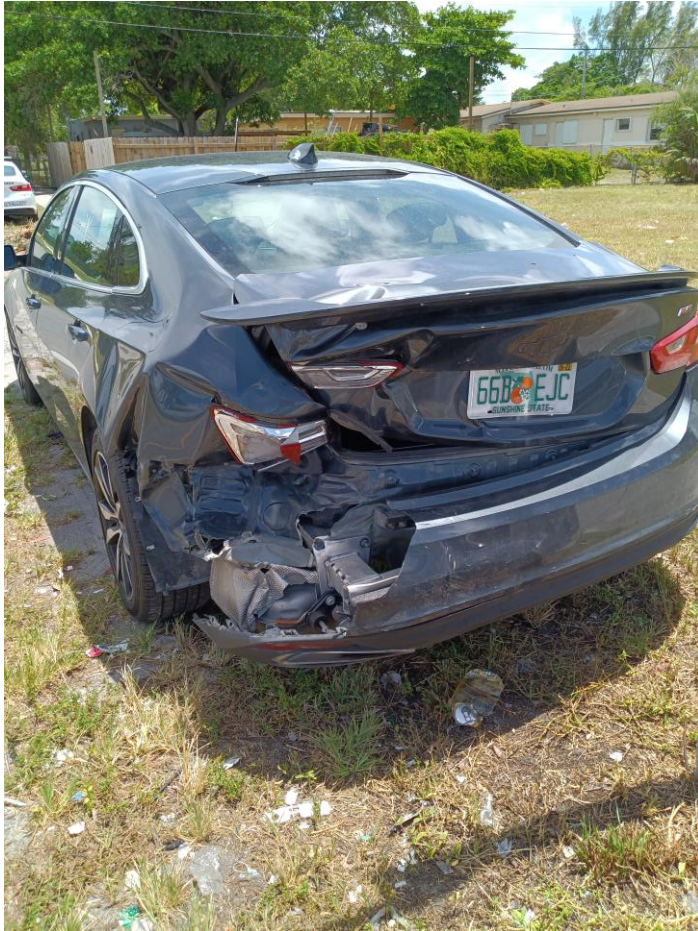


QUALITY OF LIFE ISSUES





QUALITY OF LIFE ISSUES





ENFORCEMENT RECOMMENDATIONS

Introduce language in the City's Code of Ordinances that will enable the immediate removal of vehicles, under certain conditions, in accordance with Florida Statute §320.261 and §316.1951(6).

This Ordinance will be used to remove vehicles illegally parked by auto body repair shops that encroach on private property and right-of-way swale areas.



INITIATIVES TO COMBAT UNPAID CITATIONS & SCOFFLAW VIOLATORS



UNPAID PARKING CITATIONS

	Citations Issued	Citations Collected	Citations Uncollected
Oct	815	420	395
Nov	810	448	362
Dec	707	485	222
Jan	1,073	588	485
Feb	866	525	341
Mar	1,260	584	676
Apr	1,294	763	531
May	1,367	683	684
Jun	1,529	897	632
Jul	1,614	936	678
Total	11,335	6,329	5,006
		56%	44%



SCOFFLAW VIOLATORS

The amount of unpaid parking citations = \$284,778 (45%)

1,798 parking citations issued to 361 cars

1,606 parking citations issued to 803 cars

8,323 parking citations issued to 8,323 cars

2,131 parking citations issued to 410 vehicles. (avg 5/car)

Worst offenders: KQUT72...100 citations

QDYI63...38 citations

ETEI54...33 citations

QYNI89...31 citations





COMPEL DEBT PAYMENTS

As of this writing, there is no City Ordinance that mirrors the language in Florida Statute §316.1967(6) or §320.03 (8) providing for vehicle registration holds.

Introducing this ordinance provides a fail-safe policy to ensure that City of Hallandale Beach is compliant and aligned with the registration-hold requirement as stipulated by the Florida Statutes.



MAXIMIZE COLLECTION

To accelerate the collection process. The Parking Enforcement Unit recommends towing and booting for unpaid parking citations.

The criteria shall be a minimum of two (2) unpaid parking citations.

Mac's Towing Service will be required to collect the Administrative Fee per vehicle towed.

Booting fees will include:

Release fee: \$75.00

Processing fee: 5% over \$150 in fines

Replacement fee: \$850 if device is not returned or destroyed



BOOTING





BOOTING RECOMMENDATION





PAYMENT COMPLIANCE

52% of parking citations are paid late.
Only one late fee of **\$12** @ 10 business days.
2022 forecast: **\$58k**.
New late fee potential: **\$153k**

Late Fee # 1 - **\$15.00** on calendar day 11.
Late Fee # 2 - **\$20.00** on calendar day 31.
Maximum amount = **\$35.00**



LATE FEE - COMPARISON

	<i>Lowest Citation Amount</i>	<i>Late Fee 1</i>	<i>Late Fee 2</i>	<i>Total Late Fees</i>
Delray Beach	\$ 35	\$ 25	\$ 18	\$ 43
Boca Raton	\$ 35	\$ 25	\$ -	\$ 25
Deerfield Beach	\$ 40	\$ 20	\$ 25	\$ 45
Pompano Beach	\$ 45	\$ 15	\$ 15	\$ 30
Lauderdale by the Sea	\$ 30	\$ 15	\$ 20	\$ 35
Ft. Lauderdale	\$ 40	\$ 15	\$ 20	\$ 35
Wilton Manors	\$ 25	\$ 10	\$ 20	\$ 30
Hollywood	\$ 20	\$ 10	\$ 15	\$ 25
Dania Beach	\$ 43	\$ 40	\$ -	\$ 40
Miami Beach	\$ 29	\$ 10	\$ 20	\$ 30
Key West	\$ 45	\$ 5	\$ 5	\$ 10
Average	\$ 35	\$ 17	\$ 14	\$ 32
HB	\$ 34	\$ 12	\$ -	\$ 12



MAXIMIZE COLLECTION

Incorporate a 3rd party collection agency to pursue and collect outstanding, unpaid parking citations at no cost to the City.

All parking citations not paid by the 45th day, from the date of issuance, shall be referred to the collection agency.

Collection Agency fees are added to the fine amount and paid by the violator. The City is made whole on the entire citation amount.



EXPAND REVENUE STREAMS



BUSINESS PARKING PROGRAM

The workforce pass will meet the needs of brick-and-mortar local business' seeking to provide employees and home service providers with on-street parking.

Labor pass will provide developers with tradesman parking for construction projects.



UNREALIZED REVENUE

Change rate structure for holiday parking at:

South City Park

North City Park

Currently @ \$20.00 flat rate

To stimulate turnover and increase revenue,
introduce a higher hourly rate of \$5.00 per hour.



FREE PARKING

Incorporate FS §316.1964 and eliminate free disabled parking for off-street parking facilities.

Statute provides four (4) complimentary hours for on-street parking.

Subsection (8) allows a municipality to charge a fee for off-street facilities.



No Free Parking – Ft Lauderdale





EFFICIENCY THROUGH TECHNOLOGY



Parking Enforcement Inefficiency

2,528 citations (21.0%) issued at - South City Beach - 9.3/day

@ 12 hours/day = .77 citations/hour

2,365 citations (19.6%) issued at - North City Beach – 8.7/day

@ 12 hours/day = .72 citations/hour

\$306,259 (46%) of total revenue generated @ South City Beach
>119 spaces = 12% of inventory

\$142,929 (21%) of total revenue generated @ North City Beach
>47 spaces = 5% of inventory

How do we maximize output/performance of our Parking Enforcement?



ELIMINATE MANUAL TICKETS

Parking citations are issued manually by our Parking Enforcement Specialists.
Citations are inputted manually by our back-office Support Specialist.
Citations are delivered manually to the Clerk of Courts by our Court Liaison.

Clerk of Courts has 14 days to input parking citation into their database.
The late fee of \$12.00 is added on the 11th business day.

Motorists cannot pay until the citation is entered by the Clerk of Courts.

Clerk of Court processing fee is \$2.50/ticket.

Clerk of Court collection fee is \$5.00/ticket.



MANUAL CITATION PROCESS





INCORPORATE TECHNOLOGY

Introduce citation automation (GTECHNA)

Providing for real-time monitoring of all parking citations

Hand-held devices & License Plate Recognition used to issue citations

Immediate uploading of citation

Available to pay within minutes of issuance

>>No Clerk of Court fees (\$7.50)

Ticket lifecycle monitoring (issuance, payment, status)

Ticket ageing (collections, registration holds)

>>Scofflaw alerts

Quickly identify repeat violators

>>Warning Notices (ideal for 'quality of life' infractions)

Establish list of authorized users

Interfaces with FLHSMV for registration holds

Handheld units with scanning capabilities

>>Photo evidence (citation under the wiper, refutes "I didn't get the ticket")

Citations immediately uploaded and available for payment via 'on-line e-ticket portal'

>>Revenue collected immediately enters the City's coffers without offset or reduction



REMOTE ENFORCEMENT

Remote enforcement provides monitoring of parking spaces –
every second of every day.

It enables our Parking Enforcement Specialists to focus, identify and cite quality of life infractions throughout the city.



REMOTE ENFORCEMENT

If payment is received within 14 days of issuance of the notice, as postmarked, payee may deduct \$10.00 from the amount due.



In: 02/10/2020 11:53 AM



Out: 02/10/2020 01:06 PM

gtechna



Plate Sentry

Your Smart Gateless Off-street
Parking Management and
Enforcement Solution





TECHNOLOGY INVESTMENT

The in-house parking program will require the following first-year investment

GTECHNA (\$74k)

Parking Enforcement Proprietary software

Handheld integration

Integration with Motorola Vigilant Solutions (LPR)

Plate Sentry software (remote enforcement)

Business Permit Management

FLHSMV registration hold interface

Collection agency interface

Scofflaw alerts

See GTECHNA quotes for expanded details.



ACTUAL REVENUE

	Fines Collected	SCG Fees	Late Fees	Court Fees
Oct	\$ 16,166	\$ 2,224	\$ 2,103	\$ (4,078)
Nov	\$ 17,418	\$ 2,292	\$ 2,657	\$ (4,013)
Dec	\$ 19,331	\$ 2,592	\$ 3,010	\$ (4,545)
Jan	\$ 23,694	\$ 3,255	\$ 2,939	\$ (5,900)
Feb	\$ 21,135	\$ 2,950	\$ 3,882	\$ (5,695)
Mar	\$ 21,970	\$ 3,147	\$ 3,983	\$ (5,475)
Apr	\$ 31,263	\$ 4,197	\$ 3,926	\$ (7,213)
May	\$ 28,470	\$ 3,785	\$ 4,058	\$ (7,248)
Jun	\$ 39,150	\$ 4,816	\$ 5,723	\$ (9,583)
Jul	\$ 41,452	\$ 5,022	\$ 6,340	\$ (9,473)
Aug	\$ 44,785	\$ 5,560	\$ 6,914	\$ (9,605)
Sep	\$ 41,026	\$ 5,082	\$ 6,714	\$ (8,603)
YTD	\$ 345,859	\$ 44,921	\$ 52,249	\$ (81,428)
		10%	12%	18%



COST BENEFIT ANALYSIS

Return parking spaces to the community.
Revenue generated January – August

OB Johnson-23 spaces - \$288
BF James Park-52 spaces - \$482
Ingalls/Sunset Park-5/4 spaces -
\$302



Thank You.

QUESTIONS?

JANUARY 2023