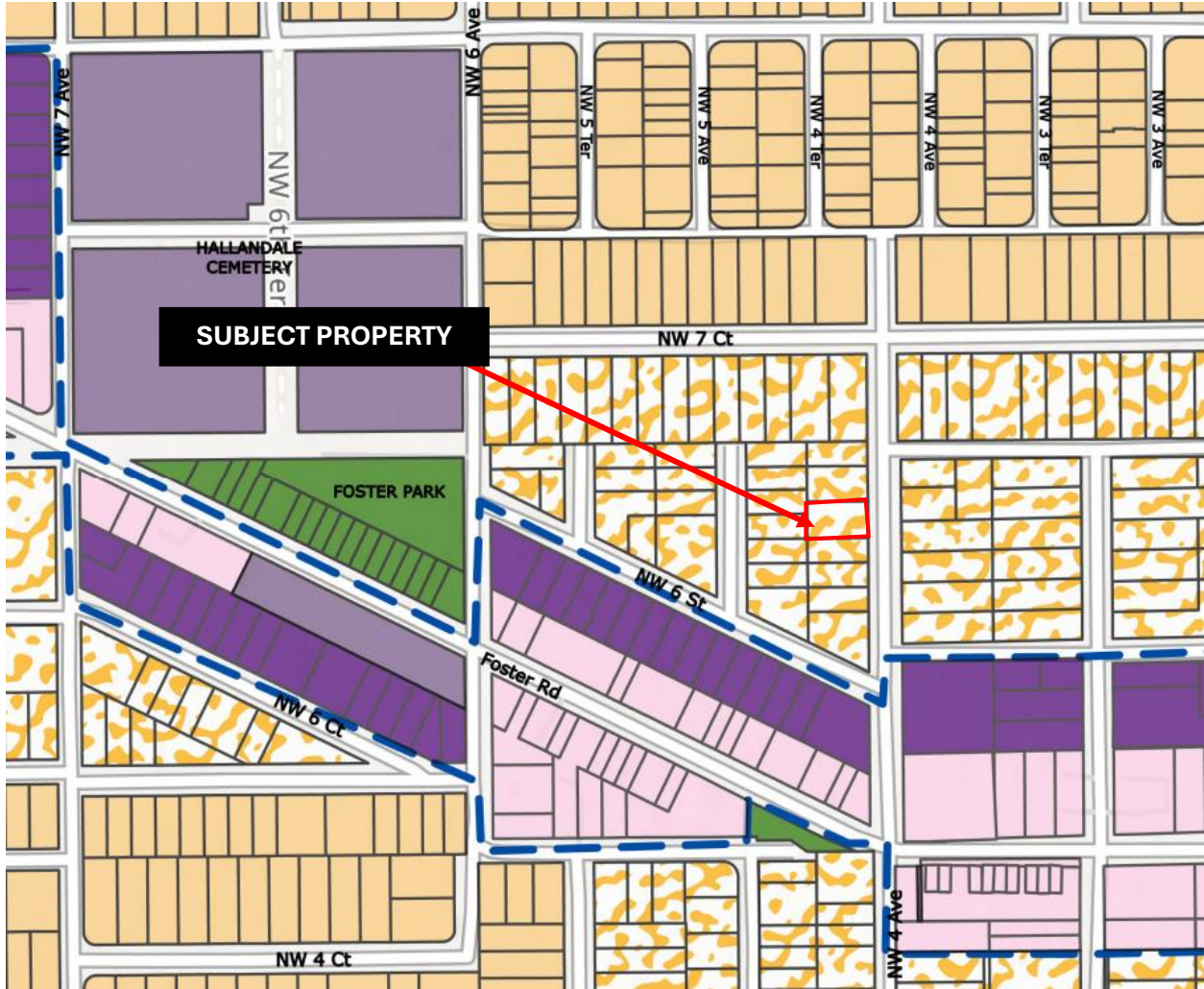


# EXHIBIT 2 ZONING MAP



**APPLICATION NO. V-24-06192**  
**617 NW 4 AVENUE DUPLEX**  
**VICTOR CABAN-DIAZ AND JOURNEY**  
**C+D GROUP**  
**617 NW 4 AVENUE**

GENERAL DISTRICTS			
 RESIDENTIAL SINGLE-FAMILY DISTRICT (RS-5)	 RESIDENTIAL MULTI-FAMILY (MEDIUM-DENSITY) DISTRICT (RM-18)	 COMMERCIAL RECREATIONAL (ACTIVE) DISTRICT (CR-A)	 RECREATION AND OPEN SPACE DISTRICT (OS)
 RESIDENTIAL SINGLE-FAMILY DISTRICT (RS-6)	 RESIDENTIAL MULTI-FAMILY (MEDIUM-DENSITY) DISTRICT (RM-25)	 COMMERCIAL RECREATIONAL (PASSIVE) DISTRICT (CR-P)	 EDUCATIONAL FACILITY DISTRICT (ED)
 RESIDENTIAL SINGLE-FAMILY DISTRICT (RS-7)	 RESIDENTIAL MULTI-FAMILY (HIGH-DENSITY-2) DISTRICT (RM-HD-2)	 BUSINESS LIMITED DISTRICT (BL-1)	 EMPLOYMENT CENTER DISTRICT (EC)
 RESIDENTIAL TWO-FAMILY (DUPLEX) DISTRICT (RD-12)	 BUSINESS INDUSTRIAL DISTRICT (BI-1)	 INDUSTRIAL LIGHT DISTRICT (IL-1)	 COMMUNITY FACILITY (CF)
			 PLANNED LOCAL ACTIVITY CENTER DISTRICT (PLAC)