



# Joseph Scavo Park Perimeter Fence Project Update



Hallandale Beach  
PROGRESS. INNOVATION. OPPORTUNITY.





# Agenda

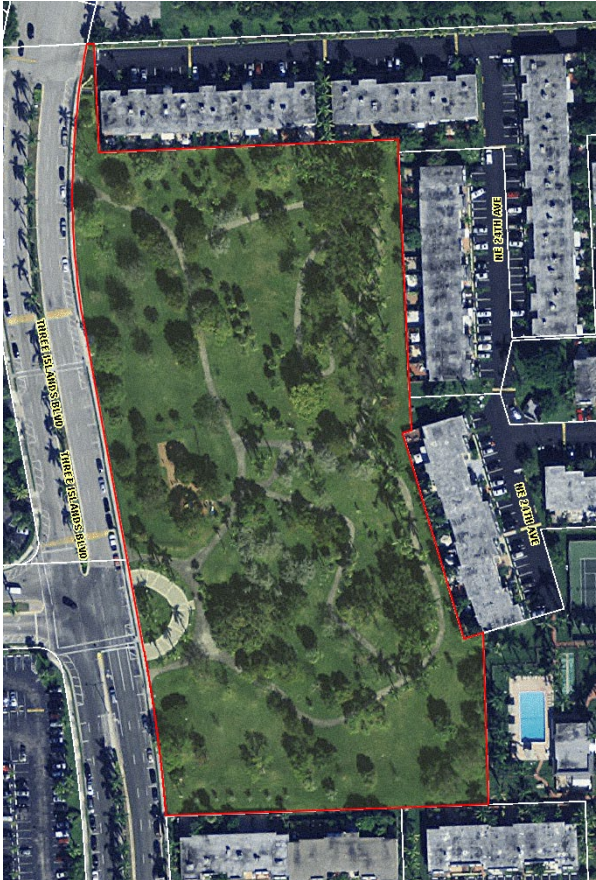
- History
- Challenges
- Funding and Approval
- Fencing Placement & Styles
- Next Steps

# History



- Property Acquired July 21, 1973
- Easement to Trustees – Northerly Portion April 24, 1974
- Park Ribbon Cutting April 5, 2014

2013



2024



# History (Continued)



In September 2016 Crime Prevention Through Environmental Design (CPTED) surveys were completed of the Venetian Park and Joseph Scavo Park properties. CPTED is a proactive crime fighting technique in which the proper design and effective use of parks, open spaces, building(s) and the surroundings lead to a reduction in crimes as well as an improvement in the quality of life for citizens of the community.

## Excerpts from from the September 2016 CPTED Surveys Recommendations:

- **Venetian Park**

Recommendation: Adjacent to Venetian Park is a local Community Park (Scavo Park). This park has six different access points into Venetian Park. I *recommend that all six entrances be closed off to the general public and be replaced by access-controlled gating.*

- **Joseph Scavo Park**

The park has many ways in, and it has 6 direct entrances to a neighboring community (Venetian Park). It is *recommended that these access areas are fenced to minimize external traffic through the nearby community.* These areas provide easy access in and out of the community for potential criminal activity, making good ambush points between the buildings, and making it difficult to determine who does and does not belong in the Venetian Park neighborhood. While the openness of the park is convenient for the residents of the community, it is easy for unwanted guests to access the community from the park. Access controlled gates would control the flow of pedestrian traffic, while still providing the ease of access for the residents of the community.

# Challenges - Calls for Service (CFS)

Police Calls for Service:

- 49 Calls for Service Outside Park Hours
  - 2020: 17
  - 2021: 7
  - 2022: 3
  - 2023: 4
  - 2024: 13
  - 2025: 4
- 11 Calls for Service During Park Hours
  - 4 Sleeping in Parks
  - 4 Graffiti
  - 3 Masks/ Social Distancing (20/21)

Calls for Service are in addition to daily 'Clearing the Zone' Activities by Hallandale Beach Police and Park Security Checks by Park Rangers.

Call #	Call Type	Notes	Date / Time	Location
282001002573	14-INFORMATION			
282001002978	14-INFORMATION			
282001002983	74-RECALL			
282002005383	14-INFORMATION	SUSPICIOUS PERSON WALKING AROUND		
282002005601	13P-SUSPICIOUS PERSO	PEOPLE YELLING AFTER HOURS	1/27/2020 18:58	900 THREE ISLANDS BLVD
282003007747	68-POLICE SERVICE CA	PEOPLE IN PARK WHEN CLOSED	1/31/2020 19:29	900 THREE ISLANDS BLVD
282003007772	68-POLICE SERVICE CA	SUSPICIOUS PERSON WALKING AROUND	1/31/2020 19:56	900 THREE ISLANDS BLVD
282003007848	68-POLICE SERVICE CA	PEOPLE IN PARK WHEN CLOSED	2/24/2020 12:35	900 THREE ISLANDS BLVD
282003007940	68-POLICE SERVICE CA	PEOPLE PLAYING BASKETBALL AFTER CLOSE	2/26/2020 14:14	900 THREE ISLANDS BLVD
282003008021	68-POLICE SERVICE CA	PEOPLE IN PARK WHEN CLOSED	3/17/2020 14:23	900 THREE ISLANDS BLVD
282003008030	68-POLICE SERVICE CA	PEOPLE IN PARK WHEN CLOSED	3/17/2020 18:39	900 THREE ISLANDS BLVD
282003008092	68-POLICE SERVICE CA	PEOPLE IN PARK WHEN CLOSED	3/18/2020 19:37	900 THREE ISLANDS BLVD
282003008101	68-POLICE SERVICE CA	PEOPLE IN PARK WHEN CLOSED	3/19/2020 18:05	900 THREE ISLANDS BLVD
282003008130	14-INFORMATION	PEOPLE IN PARK WHEN CLOSED	3/20/2020 17:46	900 THREE ISLANDS BLVD
282005015044	14-INFORMATION	PEOPLE IN PARK WHEN CLOSED	3/20/2020 18:47	900 THREE ISLANDS BLVD
282006016013	51-TRESPASSING	PEOPLE IN PARK WHEN CLOSED	3/21/2020 14:35	900 THREE ISLANDS BLVD
282007019182	14-INFORMATION	SOMEONE SLEEPING ON PLAYGROUND	3/21/2020 17:07	900 THREE ISLANDS BLVD
282008024215	14-INFORMATION	JUV'S IN PARK WHEN CLOSED	3/21/2020 21:00	900 THREE ISLANDS BLVD
282012035668	22-DISTURBANCE/NUISA	PEOPLE NOT SOCIAL DISTANCING	5/31/2020 14:14	900 THREE ISLANDS BLVD
282012035672	68-POLICE SERVICE CA	PEOPLE NOT SOCIAL DISTANCING	6/9/2020 20:15	900 THREE ISLANDS BLVD
282101001464	14-INFORMATION	PEOPLE IN PARK WHEN CLOSED	7/12/2020 15:47	900 THREE ISLANDS BLVD
282101001750	14-INFORMATION	PEOPLE IN PARK WHEN CLOSED	8/31/2020 11:18	900 THREE ISLANDS BLVD
282101001891	22N-DISTURBANCE-NOIS	PEOPLE IN PARK WHEN CLOSED	12/26/2020 18:47	900 THREE ISLANDS BLVD
282105012956	14-INFORMATION	PEOPLE NOT WEARING MASKS	12/26/2020 20:02	900 THREE ISLANDS BLVD
282107020294	68-POLICE SERVICE CA	JUV'S IN PARK WHEN CLOSED	1/15/2021 18:31	900 THREE ISLANDS BLVD
282112034333	22N-DISTURBANCE-NOIS	SOMEONE SLEEPING ON PLAYGROUND	1/18/2021 15:15	900 THREE ISLANDS BLVD
282112034444	22N-DISTURBANCE-NOIS	JUV AT PARK WHEN CLOSED	1/19/2021 19:55	900 THREE ISLANDS BLVD
282112034636	22N-DISTURBANCE-NOIS	JUV'S CAUSING DISTURBANCE AFTER CLOSE	5/8/2021 8:24	900 THREE ISLANDS BLVD
282112036311	68-POLICE SERVICE CA	PEOPLE IN PARK WHEN CLOSED	7/16/2021 19:49	900 THREE ISLANDS BLVD
282201000604	68-POLICE SERVICE CA	PEOPLE IN PARK SCREAMING ALL NIGHT	12/8/2021 19:26	900 THREE ISLANDS BLVD
282201001811	51-TRESPASSING	PEOPLE IN PARK WHEN CLOSED	12/9/2021 18:09	900 THREE ISLANDS BLVD
282204012068	22-DISTURBANCE/NUISA	PEOPLE PLAYING BASKETBALL AFTER CLOSE	12/11/2021 18:36	900 THREE ISLANDS BLVD
282206016057	68-POLICE SERVICE CA	PEOPLE IN PARK WHEN CLOSED	12/30/2021 19:22	900 THREE ISLANDS BLVD
282208023096	67UM-MEDICAL-UNKNOWN	PEOPLE IN PARK WHEN CLOSED	1/6/2022 23:40	900 THREE ISLANDS BLVD
282302004307	22N-DISTURBANCE-NOIS	PEOPLE IN PARK WHEN CLOSED	1/20/2022 0:32	900 THREE ISLANDS BLVD
282303008440	20-MENTALLY ILL PERS	SOMEONE SLEEPING AT PARK	4/26/2022 21:11	900 THREE ISLANDS BLVD
282308025958	22N-DISTURBANCE-NOIS	JUV'S IN PARK WHEN CLOSED	6/4/2022 18:33	900 THREE ISLANDS BLVD
282308029498	38V-DOMESTIC DISTURB	SIGNAL 20 IN PARK AFTER HOURS	8/14/2022 8:46	900 THREE ISLANDS BLVD
282403006895	14-INFORMATION	LOUD MUSIC AFTER HOURS	2/7/2023 19:34	900 THREE ISLANDS BLVD
282404011434	31-ASSAULT	LOUD MUSIC AFTER HOURS	3/12/2023 21:07	900 THREE ISLANDS BLVD
282404012485	37-DISTURBANCE JUVEN	VAGRANTS SLEEPING NEAR PLAYGROUND	8/2/2023 1:28	900 THREE ISLANDS BLVD
2824050159637	68-POLICE SERVICE CA	JUV - SHOOTING GEL BLASTER GUN - NIGHT	8/30/2023 20:03	900 THREE ISLANDS BLVD
282406019867	14-INFORMATION	JUV'S SCREAMING AT NIGHT AFTER CLOSE	3/15/2024 7:57	900 THREE ISLANDS BLVD
282407023985	14-INFORMATION	JUV'S RIDING SCOOTERS AT NIGHT AFTER CLOSE	4/4/2024 20:20	900 THREE ISLANDS BLVD
282410033235	22N-DISTURBANCE-NOIS	JUV'S PLAYING SOCCER AT NIGHT AFTER CLOSE	4/14/2024 1:19	900 THREE ISLANDS BLVD
282411035489	22N-DISTURBANCE-NOIS	JUV'S BREAKING ITEMS AT PARK AFTER CLOSE	5/12/2024 21:09	900 THREE ISLANDS BLVD
282411036220	14-INFORMATION	JUV'S SCREAMING AT NIGHT AFTER CLOSE	6/14/2024 19:08	900 THREE ISLANDS BLVD
282411036321	22N-DISTURBANCE-NOIS	JUV'S RIDING SCOOTERS AT NIGHT AFTER CLOSE	7/23/2024 22:34	900 THREE ISLANDS BLVD
282411037285	37-DISTURBANCE JUVEN	ADULTS ARGUING AFTER CLOSE	10/19/2024 21:23	900 THREE ISLANDS BLVD
282411037374	14-INFORMATION	JUV'S SCREAMING AT NIGHT AFTER CLOSE	11/9/2024 21:49	900 THREE ISLANDS BLVD
282411037703	68-POLICE SERVICE CA	JUV'S SCREAMING AT NIGHT AFTER CLOSE	11/18/2024 22:45	900 THREE ISLANDS BLVD
282412038624	40-VANDALISM/MALICIO	JUV'S SCREAMING AT NIGHT AFTER CLOSE	11/17/2024 21:00	900 THREE ISLANDS BLVD
282412039594	40-VANDALISM/MALICIO	JUV'S SCREAMING AT NIGHT AFTER CLOSE	11/28/2024 6:06	900 THREE ISLANDS BLVD
282412040914	22N-DISTURBANCE-NOIS	GRAFFITI	11/26/2024 22:29	900 THREE ISLANDS BLVD
282501002829	14-INFORMATION	GRAFFITI	11/30/2024 4:52	900 THREE ISLANDS BLVD
282501003168	37-DISTURBANCE JUVEN	JUV'S SCREAMING AT NIGHT AFTER CLOSE	12/8/2024 19:00	900 THREE ISLANDS BLVD
282502004432	22N-DISTURBANCE-NOIS	JUV'S SCREAMING / PLAYING BASKETBALL AT NIGHT AFTER CLOSE	12/17/2024 10:56	900 THREE ISLANDS BLVD
282502004537	37-DISTURBANCE JUVEN	OFFICERS OUT W/ JUV'S AT NIGHT	12/29/2024 22:39	900 THREE ISLANDS BLVD
282503009048	40-VANDALISM/MALICIO	JUV'S SCREAMING AT NIGHT AFTER CLOSE	1/25/2025 22:49	900 THREE ISLANDS BLVD
282503009194	40-VANDALISM/MALICIO	JUV'S CAUSING A DISTURBANCE AFTER CLOSE	1/28/2025 20:23	900 THREE ISLANDS BLVD
		GRAFFITI	2/7/2025 21:01	900 THREE ISLANDS BLVD
		GRAFFITI	2/8/2025 21:15	900 THREE ISLANDS BLVD
		GRAFFITI	3/16/2025 11:09	900 THREE ISLANDS BLVD
		GRAFFITI	3/17/2025 11:56	900 THREE ISLANDS BLVD



# Challenges - Clearing the Zone and Security Checks



The Three Islands Safe Neighborhood District Patrols Joseph Scavo Park Daily.  
Park Ranger Staff Patrols Joseph Scavo Park Daily during open times.

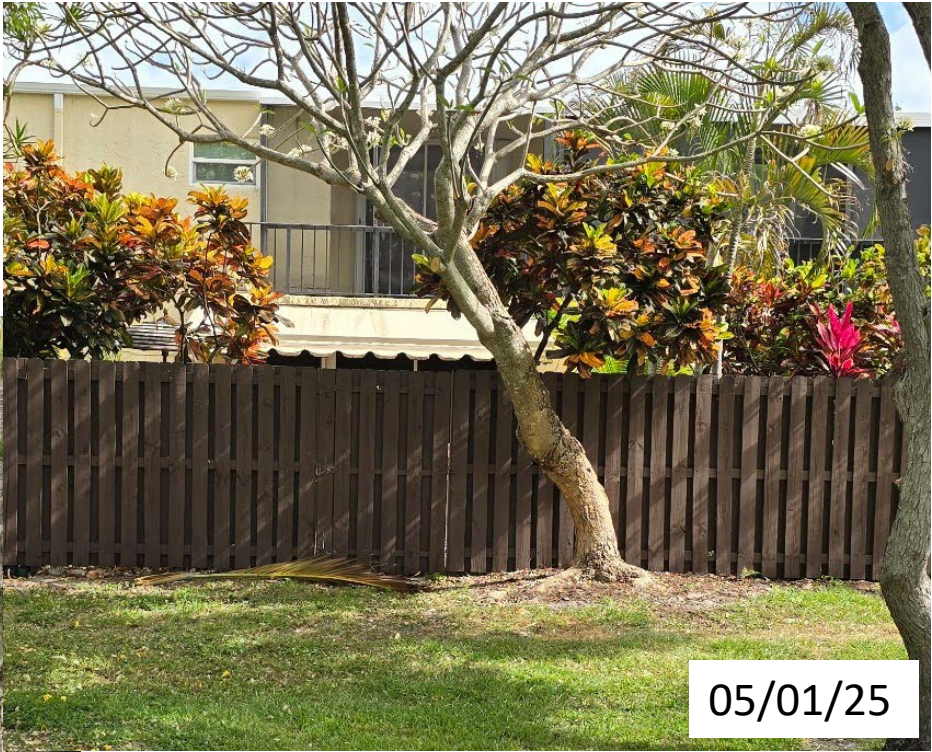
*The most common Patrol issues are:*

- Pets in Park
- Bicycles, Electric Scooters, Electric Bikes driven through Park
- Garbage/ Yard Waste brought/ thrown into park by adjacent neighbors
- Refusal to Leave at Closing/ Return after Closing

# Challenges – Clearing the Zone and Security Checks



Garbage/ Yard Waste brought/ thrown into park by adjacent neighbors



# Challenges – Clearing the Zone and Security Checks

## Pets in Park

- Unleashed
- Waste left in Park
- Disagreements between Park Users



# Challenges – Clearing the Zone and Security Checks

## Minibikes, Electric Scooters, Electric Bikes in Park

- Damaging Park Property
- Driven Recklessly On Park Sidewalks



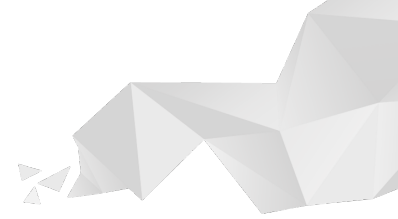
# Challenges – Safety Concern

## Post Storm

- Access During Flooding Events



# Funding



## FY 2024-2025 Commission Annual Action Plan - Infrastructure and Mobility

Develop and maintain resilient infrastructure and sustainable mobility solutions that support the growth of the City, improve connectivity, and enhance the overall quality of life for the community.

Infrastructure & Mobility	FUNDED	\$300,000	Joe Scavo Park Perimeter Fencing	The City has allocated \$300k to install perimeter fencing around the boundary of Joe Scavo Park to secure the park after hours.
---------------------------	--------	-----------	-------------------------------------	--

## FY 2024-2025 Budget Appropriation

# Fencing – Other Parks – Adjacent Private Property Separation



**Sunrise Park Stockade**

Also Curci and Sunset Parks



**Ingalls Park Wall**

Also MLK Plaza



**Golden Isles Park Chain Link**

Also Golden Isles Tennis Center  
and Chaves Lake

South City Beach and North City Beach Parks are separated from the adjoining private properties by various means on neighbor's property including Walls, Partial Walls with Chain Link Top, and landscaped Aluminum fencing.

# Fencing – Other Parks - Perimeter Park Fences



Aluminum



Vinyl Coated Chain Link

# Fencing - Styles



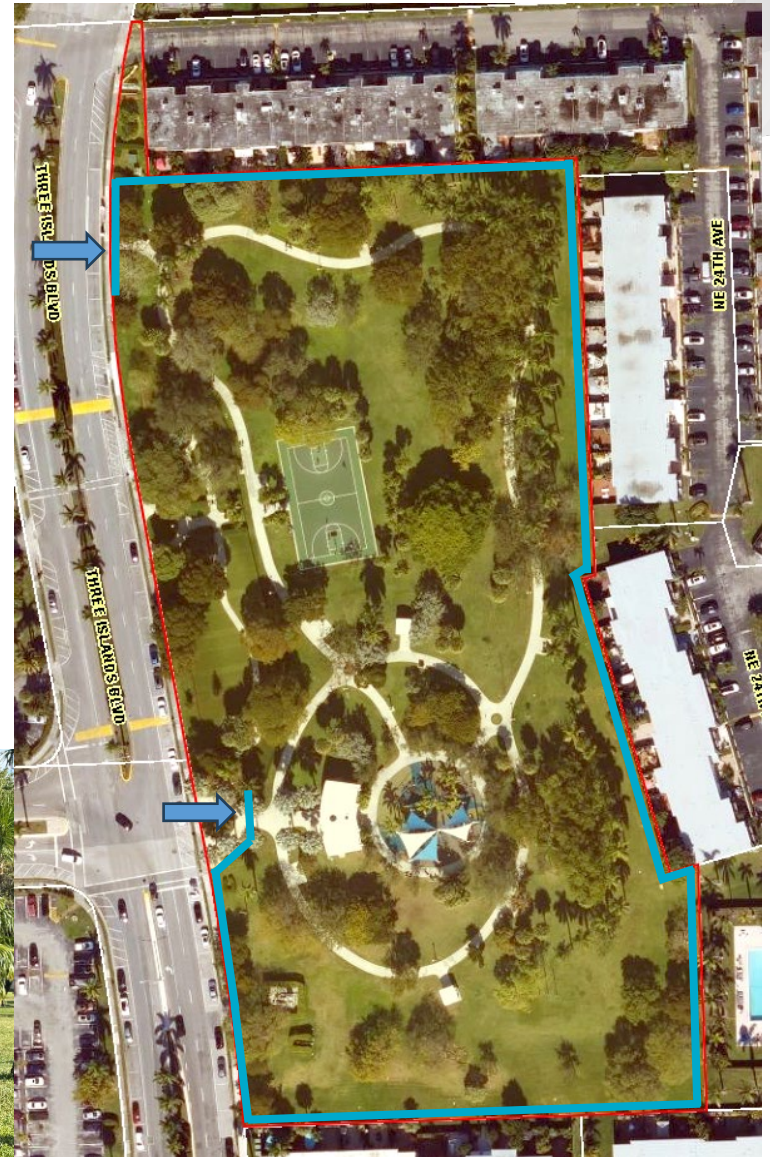
Vinyl Coated Chain Link  
North, South, East



Aluminum  
West/ Three Islands Blvd

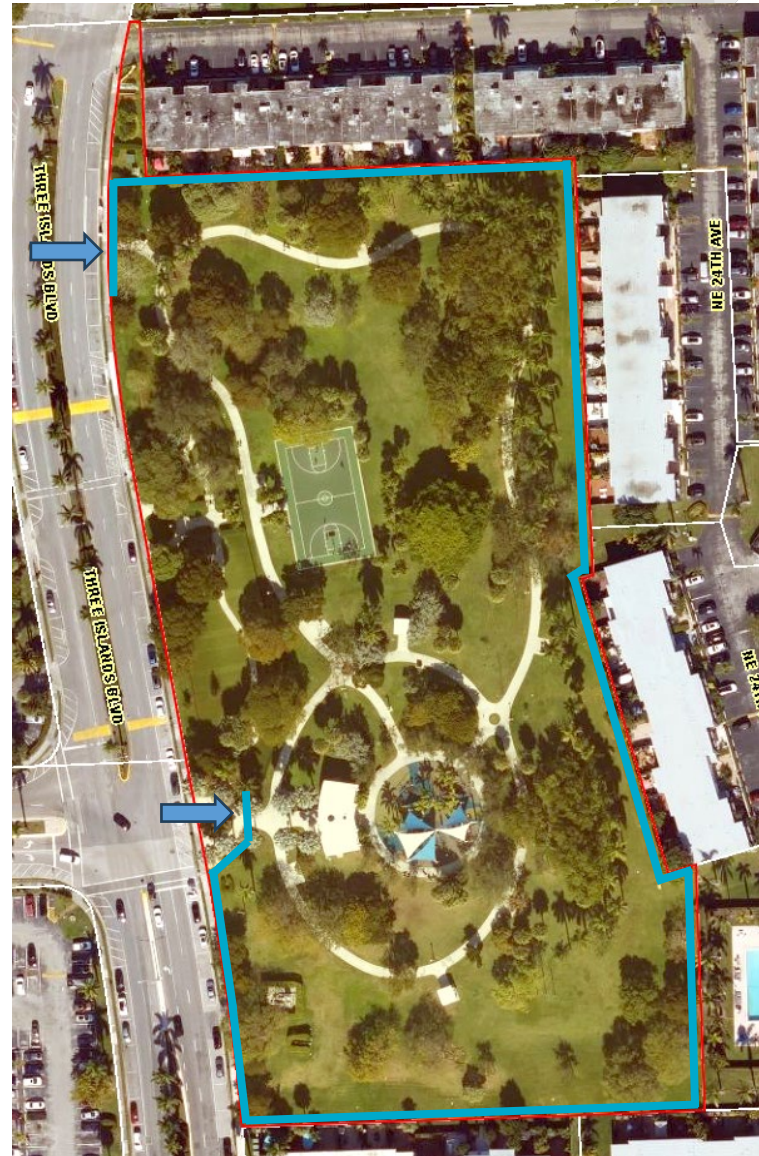
# Fencing - Placement

- Connect to Dog Fences
- Gates at Walk In Accesses on Three Island Boulevard
- Exact Placement to be determined
  - Survey last done in 2013
  - Adjacent property's stockade fence appears to be on the property line
  - Adjacent property's utilities appear to be on Park property



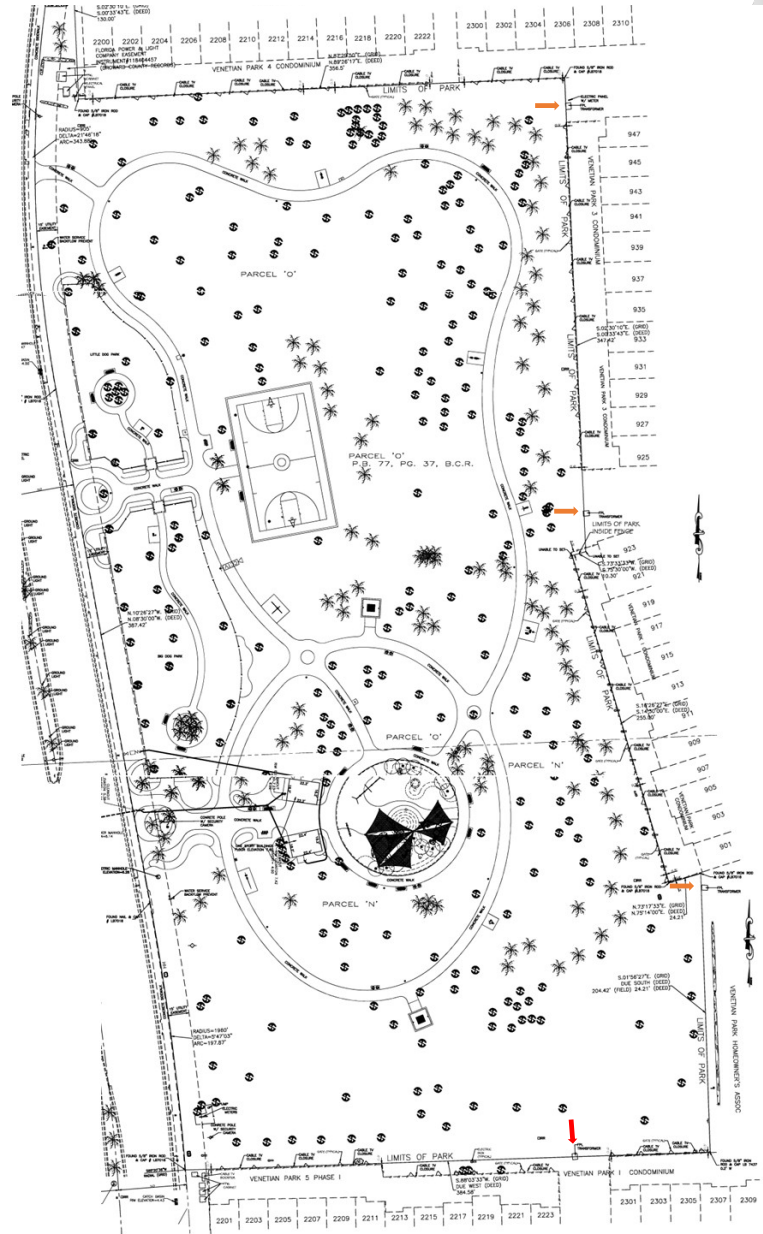
# Next Steps

- Survey Verification of property line
- Decision regarding easement/ access lane/ placement
- Procure
- Install



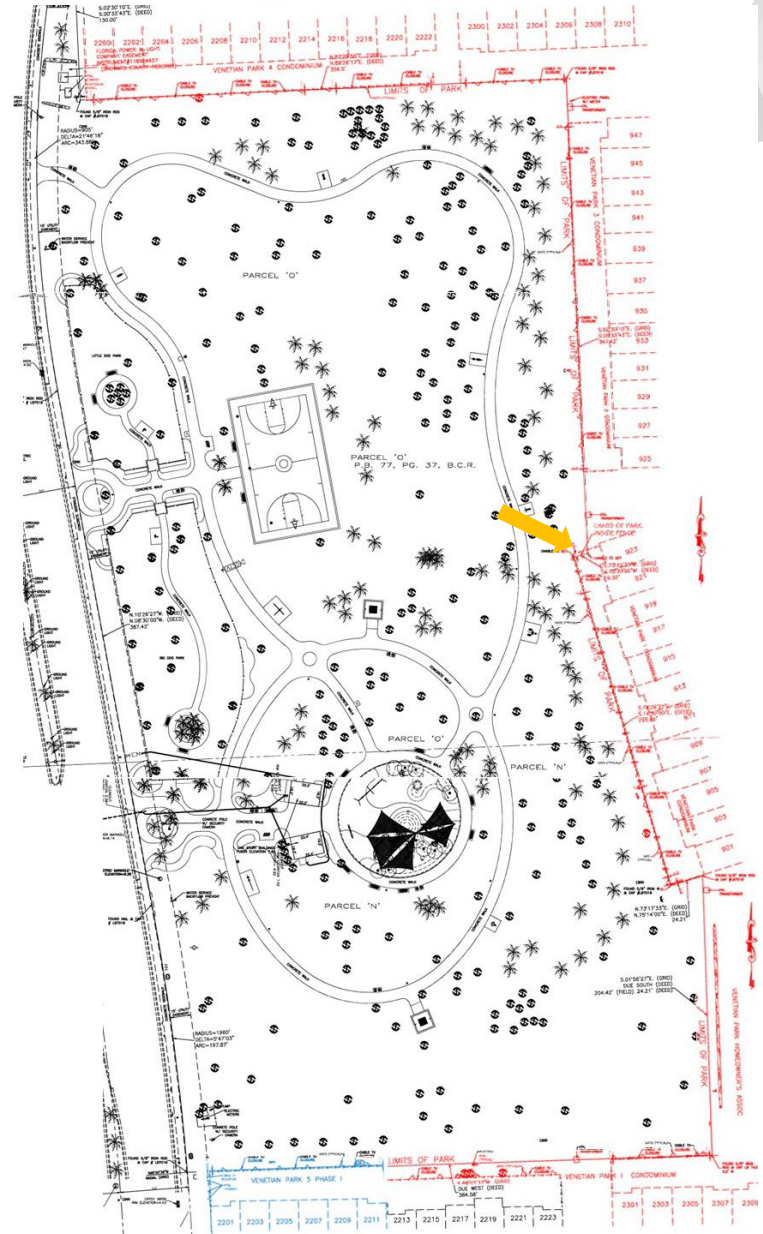
# Current Status

- *Survey Verification of property line*
  - Title Search and Survey Completed – no easements or development agreements in place at perimeter
  - Encroachments found including utilities:
    - FPL requesting an easement (4 transformers)
    - Comcast completing their survey and course of action (22 boxes)
    - AT&T verified no utilities on site



# Current Status

- *Survey Verification of property line*
  - Encroachments found including private property and fencing
    - Forty-four (44) units with fencing encroaching on City property (in red)
    - Including one (1) unit with approximately twenty-five (25) feet of City property within their fenced area (orange arrow)
    - Six (6) additional units are adjacent to property line (in blue)
    - Sixteen (16) private electric boxes on City property



# Current Status

- *Survey Verification of property line*
  - Title Search and Survey Completed
- *Decision regarding easement/ access lane/ placement*
  - FPL Easement required to allow Transformer(s) to remain
  - Fence Placement along City property line
- *Procure*
  - Commission approval of Resolution
- *Install*
  - Property Notification
  - Fence removal and installation

## Questions?

