

LEGAL DESCRIPTION OF RIGHT-OF-WAY VACATION

N.W. 6 STREET (A PORTION) compose of the two strips of land of 40.00 feet wide described as follows:

A portion of an existing public 30.00 feet Right of Way to be vacated, lying at the South line of lots 1 and 2, Block "C" of "GEORGE M. PHIPPENS SUBDIVISION" and the East right of way line of N.W. 1<sup>st</sup> Avenue and the West right of way line of North Dixie Highway and the North line of lots 11 and 12 of "GEORGE M. PHIPPENS SUBDIVISION", of "FREDERICK'S SURVEY" a Subdivision in the Southwest one-quarter (1/4) of Section 22, Township 51 South, Range 42 East, according to the Plat thereof as recorded in Plat Book 1, of Page 71 of the Public Records of Miami-Dade County, Florida, said land situate, lying and being in Broward County, Florida in order to complete a total of 40.00 feet of Right of Way Vacated.

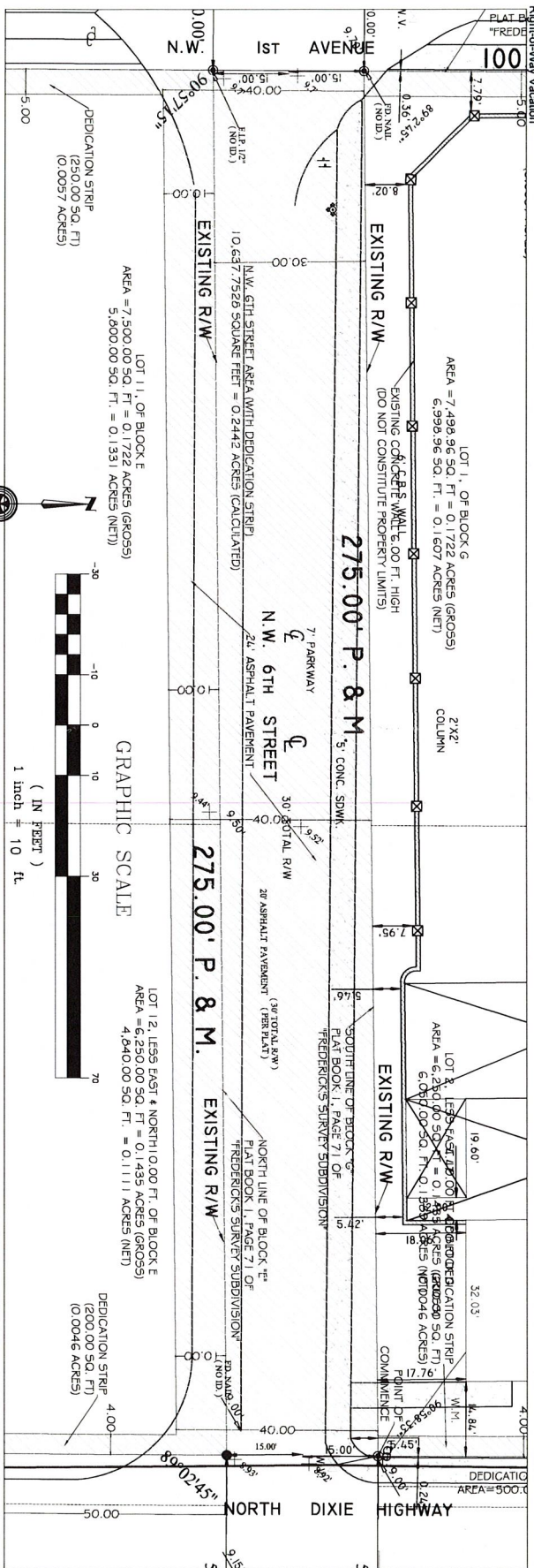
And

The North 10.00 feet of lots 11 and 12 of "GEORGE M. PHIPPENS SUBDIVISION", of "FREDERICK'S SURVEY" a Subdivision in the Southwest one-quarter (1/4) of Section 22, Township 51 South, Range 42 East, according to the Plat thereof as recorded in Plat Book 1, of Page 71 of the Public Records of Miami-Dade County, Florida, said land situate, lying and being in Broward County, Florida in order to complete a total of 40.00 feet of Right of Way Vacated.

LOCATION SKETCH  
NOT TO SCALE



MARFEL SURVEYORS INC.  
3005W 134TH WAY SUITE-401-E PLEASANT PINES, FLORIDA (33027)  
(954)404-0141 LB.B105 nassr@marfel.com



UNDERGROUND UTILITIES NOTES:

1. ALL UTILITIES SHOWN ARE BASED ON THE RECORD DRAWING OF THE PROJECT.

2. THE SURVEYOR HAS CONDUCTED A VISUAL INSPECTION OF THE PROJECT AREA.

3. THE SURVEYOR HAS CONDUCTED A VISUAL INSPECTION OF THE PROJECT AREA.

4. THE SURVEYOR HAS CONDUCTED A VISUAL INSPECTION OF THE PROJECT AREA.

5. THE SURVEYOR HAS CONDUCTED A VISUAL INSPECTION OF THE PROJECT AREA.

6. THE SURVEYOR HAS CONDUCTED A VISUAL INSPECTION OF THE PROJECT AREA.

7. THE SURVEYOR HAS CONDUCTED A VISUAL INSPECTION OF THE PROJECT AREA.

8. THE SURVEYOR HAS CONDUCTED A VISUAL INSPECTION OF THE PROJECT AREA.

9. THE SURVEYOR HAS CONDUCTED A VISUAL INSPECTION OF THE PROJECT AREA.

10. THE SURVEYOR HAS CONDUCTED A VISUAL INSPECTION OF THE PROJECT AREA.

11. THE SURVEYOR HAS CONDUCTED A VISUAL INSPECTION OF THE PROJECT AREA.

12. THE SURVEYOR HAS CONDUCTED A VISUAL INSPECTION OF THE PROJECT AREA.

13. THE SURVEYOR HAS CONDUCTED A VISUAL INSPECTION OF THE PROJECT AREA.

14. THE SURVEYOR HAS CONDUCTED A VISUAL INSPECTION OF THE PROJECT AREA.

15. THE SURVEYOR HAS CONDUCTED A VISUAL INSPECTION OF THE PROJECT AREA.

16. THE SURVEYOR HAS CONDUCTED A VISUAL INSPECTION OF THE PROJECT AREA.

17. THE SURVEYOR HAS CONDUCTED A VISUAL INSPECTION OF THE PROJECT AREA.

18. THE SURVEYOR HAS CONDUCTED A VISUAL INSPECTION OF THE PROJECT AREA.

19. THE SURVEYOR HAS CONDUCTED A VISUAL INSPECTION OF THE PROJECT AREA.

20. THE SURVEYOR HAS CONDUCTED A VISUAL INSPECTION OF THE PROJECT AREA.

21. THE SURVEYOR HAS CONDUCTED A VISUAL INSPECTION OF THE PROJECT AREA.

22. THE SURVEYOR HAS CONDUCTED A VISUAL INSPECTION OF THE PROJECT AREA.

23. THE SURVEYOR HAS CONDUCTED A VISUAL INSPECTION OF THE PROJECT AREA.

24. THE SURVEYOR HAS CONDUCTED A VISUAL INSPECTION OF THE PROJECT AREA.

25. THE SURVEYOR HAS CONDUCTED A VISUAL INSPECTION OF THE PROJECT AREA.

26. THE SURVEYOR HAS CONDUCTED A VISUAL INSPECTION OF THE PROJECT AREA.

27. THE SURVEYOR HAS CONDUCTED A VISUAL INSPECTION OF THE PROJECT AREA.

28. THE SURVEYOR HAS CONDUCTED A VISUAL INSPECTION OF THE PROJECT AREA.

29. THE SURVEYOR HAS CONDUCTED A VISUAL INSPECTION OF THE PROJECT AREA.

LEGEND

1. ALL UTILITIES SHOWN ARE BASED ON THE RECORD DRAWING OF THE PROJECT.	1. ALL UTILITIES SHOWN ARE BASED ON THE RECORD DRAWING OF THE PROJECT.
2. THE SURVEYOR HAS CONDUCTED A VISUAL INSPECTION OF THE PROJECT AREA.	2. THE SURVEYOR HAS CONDUCTED A VISUAL INSPECTION OF THE PROJECT AREA.
3. THE SURVEYOR HAS CONDUCTED A VISUAL INSPECTION OF THE PROJECT AREA.	3. THE SURVEYOR HAS CONDUCTED A VISUAL INSPECTION OF THE PROJECT AREA.
4. THE SURVEYOR HAS CONDUCTED A VISUAL INSPECTION OF THE PROJECT AREA.	4. THE SURVEYOR HAS CONDUCTED A VISUAL INSPECTION OF THE PROJECT AREA.
5. THE SURVEYOR HAS CONDUCTED A VISUAL INSPECTION OF THE PROJECT AREA.	5. THE SURVEYOR HAS CONDUCTED A VISUAL INSPECTION OF THE PROJECT AREA.
6. THE SURVEYOR HAS CONDUCTED A VISUAL INSPECTION OF THE PROJECT AREA.	6. THE SURVEYOR HAS CONDUCTED A VISUAL INSPECTION OF THE PROJECT AREA.
7. THE SURVEYOR HAS CONDUCTED A VISUAL INSPECTION OF THE PROJECT AREA.	7. THE SURVEYOR HAS CONDUCTED A VISUAL INSPECTION OF THE PROJECT AREA.
8. THE SURVEYOR HAS CONDUCTED A VISUAL INSPECTION OF THE PROJECT AREA.	8. THE SURVEYOR HAS CONDUCTED A VISUAL INSPECTION OF THE PROJECT AREA.
9. THE SURVEYOR HAS CONDUCTED A VISUAL INSPECTION OF THE PROJECT AREA.	9. THE SURVEYOR HAS CONDUCTED A VISUAL INSPECTION OF THE PROJECT AREA.
10. THE SURVEYOR HAS CONDUCTED A VISUAL INSPECTION OF THE PROJECT AREA.	10. THE SURVEYOR HAS CONDUCTED A VISUAL INSPECTION OF THE PROJECT AREA.
11. THE SURVEYOR HAS CONDUCTED A VISUAL INSPECTION OF THE PROJECT AREA.	11. THE SURVEYOR HAS CONDUCTED A VISUAL INSPECTION OF THE PROJECT AREA.
12. THE SURVEYOR HAS CONDUCTED A VISUAL INSPECTION OF THE PROJECT AREA.	12. THE SURVEYOR HAS CONDUCTED A VISUAL INSPECTION OF THE PROJECT AREA.
13. THE SURVEYOR HAS CONDUCTED A VISUAL INSPECTION OF THE PROJECT AREA.	13. THE SURVEYOR HAS CONDUCTED A VISUAL INSPECTION OF THE PROJECT AREA.
14. THE SURVEYOR HAS CONDUCTED A VISUAL INSPECTION OF THE PROJECT AREA.	14. THE SURVEYOR HAS CONDUCTED A VISUAL INSPECTION OF THE PROJECT AREA.
15. THE SURVEYOR HAS CONDUCTED A VISUAL INSPECTION OF THE PROJECT AREA.	15. THE SURVEYOR HAS CONDUCTED A VISUAL INSPECTION OF THE PROJECT AREA.
16. THE SURVEYOR HAS CONDUCTED A VISUAL INSPECTION OF THE PROJECT AREA.	16. THE SURVEYOR HAS CONDUCTED A VISUAL INSPECTION OF THE PROJECT AREA.
17. THE SURVEYOR HAS CONDUCTED A VISUAL INSPECTION OF THE PROJECT AREA.	17. THE SURVEYOR HAS CONDUCTED A VISUAL INSPECTION OF THE PROJECT AREA.
18. THE SURVEYOR HAS CONDUCTED A VISUAL INSPECTION OF THE PROJECT AREA.	18. THE SURVEYOR HAS CONDUCTED A VISUAL INSPECTION OF THE PROJECT AREA.
19. THE SURVEYOR HAS CONDUCTED A VISUAL INSPECTION OF THE PROJECT AREA.	19. THE SURVEYOR HAS CONDUCTED A VISUAL INSPECTION OF THE PROJECT AREA.
20. THE SURVEYOR HAS CONDUCTED A VISUAL INSPECTION OF THE PROJECT AREA.	20. THE SURVEYOR HAS CONDUCTED A VISUAL INSPECTION OF THE PROJECT AREA.
21. THE SURVEYOR HAS CONDUCTED A VISUAL INSPECTION OF THE PROJECT AREA.	21. THE SURVEYOR HAS CONDUCTED A VISUAL INSPECTION OF THE PROJECT AREA.
22. THE SURVEYOR HAS CONDUCTED A VISUAL INSPECTION OF THE PROJECT AREA.	22. THE SURVEYOR HAS CONDUCTED A VISUAL INSPECTION OF THE PROJECT AREA.
23. THE SURVEYOR HAS CONDUCTED A VISUAL INSPECTION OF THE PROJECT AREA.	23. THE SURVEYOR HAS CONDUCTED A VISUAL INSPECTION OF THE PROJECT AREA.
24. THE SURVEYOR HAS CONDUCTED A VISUAL INSPECTION OF THE PROJECT AREA.	24. THE SURVEYOR HAS CONDUCTED A VISUAL INSPECTION OF THE PROJECT AREA.
25. THE SURVEYOR HAS CONDUCTED A VISUAL INSPECTION OF THE PROJECT AREA.	25. THE SURVEYOR HAS CONDUCTED A VISUAL INSPECTION OF THE PROJECT AREA.
26. THE SURVEYOR HAS CONDUCTED A VISUAL INSPECTION OF THE PROJECT AREA.	26. THE SURVEYOR HAS CONDUCTED A VISUAL INSPECTION OF THE PROJECT AREA.
27. THE SURVEYOR HAS CONDUCTED A VISUAL INSPECTION OF THE PROJECT AREA.	27. THE SURVEYOR HAS CONDUCTED A VISUAL INSPECTION OF THE PROJECT AREA.
28. THE SURVEYOR HAS CONDUCTED A VISUAL INSPECTION OF THE PROJECT AREA.	28. THE SURVEYOR HAS CONDUCTED A VISUAL INSPECTION OF THE PROJECT AREA.
29. THE SURVEYOR HAS CONDUCTED A VISUAL INSPECTION OF THE PROJECT AREA.	29. THE SURVEYOR HAS CONDUCTED A VISUAL INSPECTION OF THE PROJECT AREA.
30. THE SURVEYOR HAS CONDUCTED A VISUAL INSPECTION OF THE PROJECT AREA.	30. THE SURVEYOR HAS CONDUCTED A VISUAL INSPECTION OF THE PROJECT AREA.



Drawn by: FELIPE  
Date: 02/08/2019  
Scale: AS SHOWN

N.W. 6 STREET, FROM N.W. 1st AVENUE  
TO NORTH DIXIE HIGHWAY

BOUNDARY SURVEY