



Sunrise Park City Commission Meeting



CREATING A SHARED VISION

August 21, 2019

To create a place of natural beauty for community enjoyment and enrichment, reflecting the community's culture and ecology while serving as a model of sustainability, stewardship and resilience.

- Share site analysis and history
- Present results from public outreach efforts
- Present conceptual site plan and probable cost

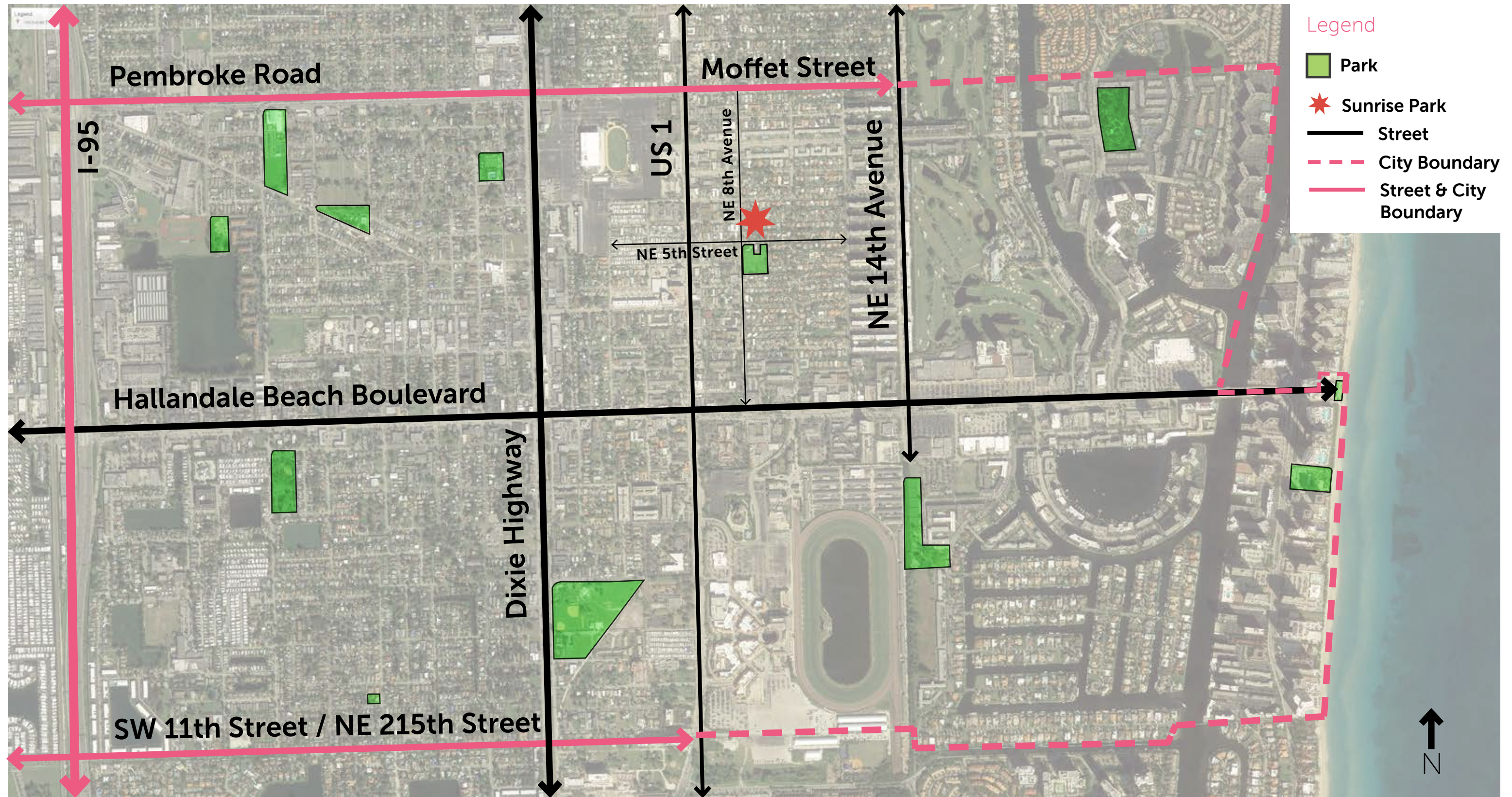


SITE ANALYSIS



SITE ANALYSIS

Regional Context





SUNRISE PARK HISTORY



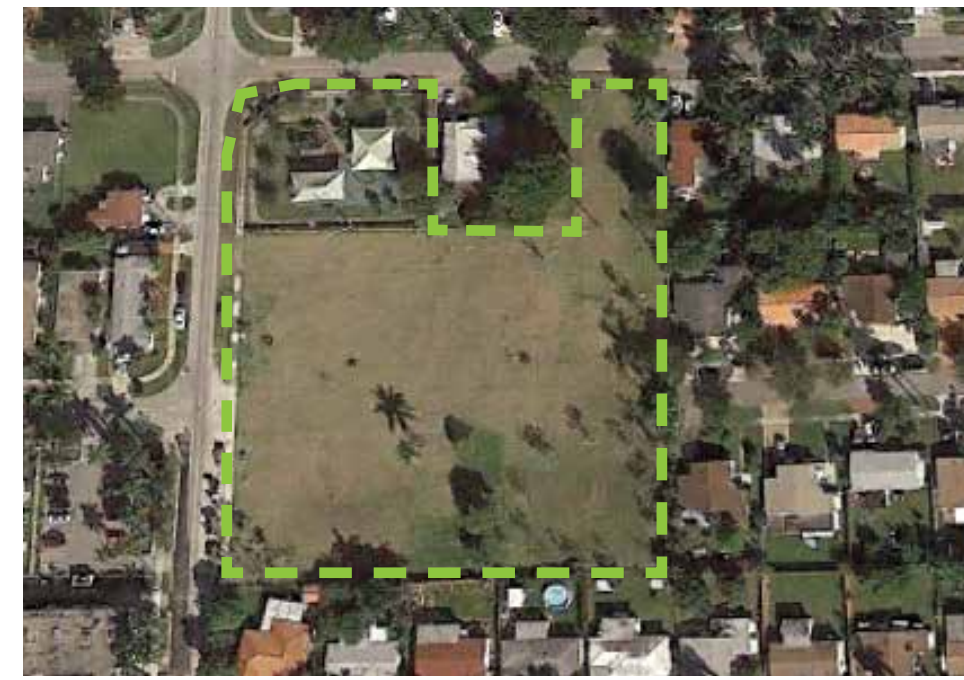
2004 - Jewish Community Center



2010 - Playground



2013 - JCC Demolition



2014 - Open field

- Sunrise Park is a 2.5 acre park that was a small green space adjacent to a single-family home and the Jewish Community Center.
- After a City acquisition, the JCC was demolished and the park grew to its current size.
- A playground was installed to begin the process of activating the site.
- The citizens voted on the G.O. Bond to improve all the parks in Hallandale Beach.
- The G.O. Bond allotted \$3.2 million for Sunrise Park improvements.
- The park program and design were to be adapted to the needs and desires of the community.

EXISTING CONDITIONS

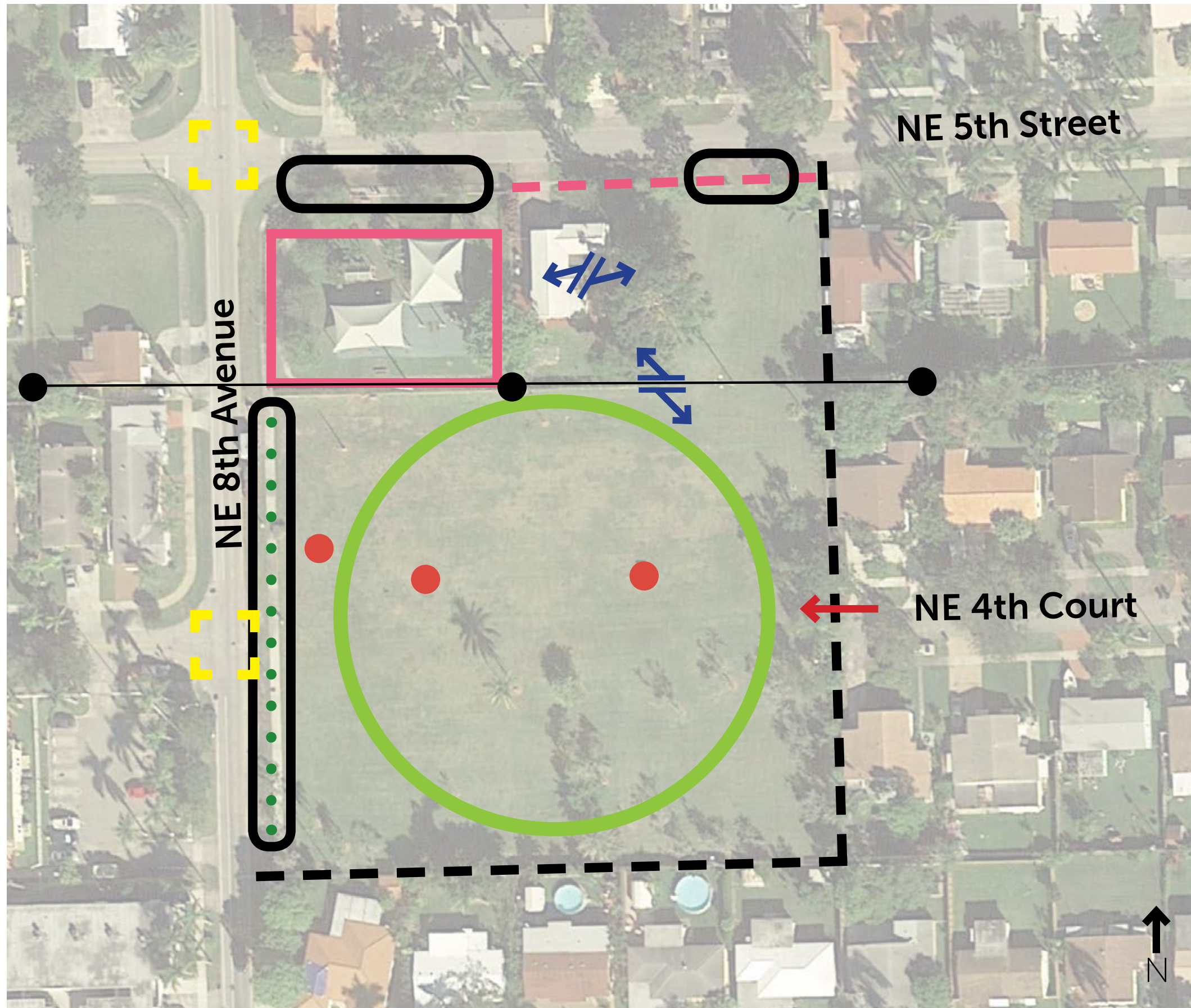
Park Boundaries




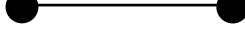







- 2.5 acres
- \$3.2 million budget allocated by the G.O. Bond for project, including design, administration and construction costs.



SITE ANALYSIS

Issues

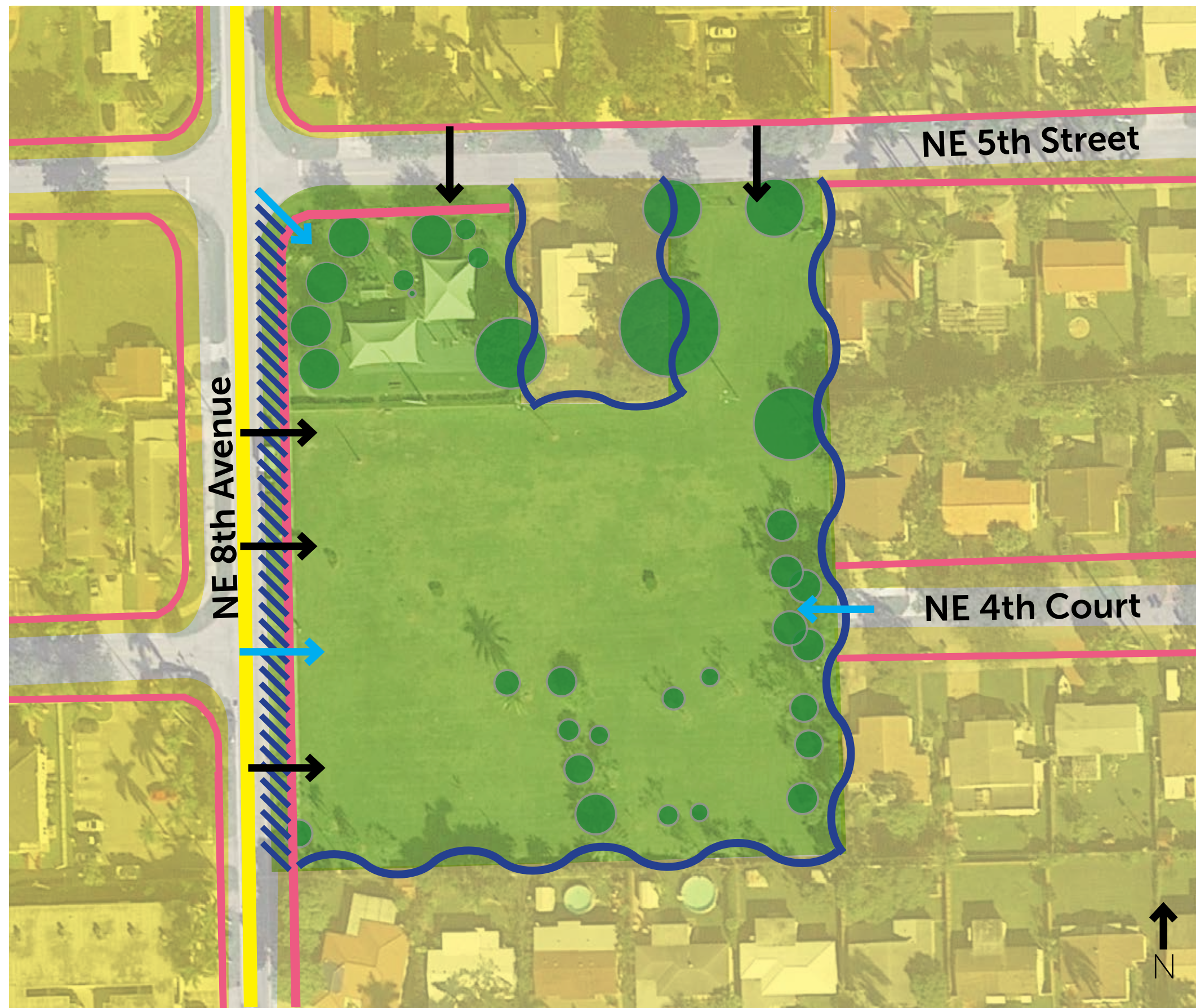


-  Off-street parking
-  Lack of street trees
-  No crosswalks
-  Overhead utilities
-  Sparse vegetation & underutilized field
-  Lack of uniform fencing/ screening for adjacent neighbors
-  Sidewalk discontinues
-  Obscured park entry
-  Spatial disconnection
-  Underground utilities
-  Existing activities confined to corner of park



SITE ANALYSIS

Assets



-  Residential neighborhood
-  Existing sidewalks connecting to park
-  Existing bike lanes adjacent to park
-  Possible to establish multiple points of access
-  Potential 'gateways' to park
-  2.5 acres of green space
-  Trees and palms
-  Active edge
-  Passive edge



PUBLIC OUTREACH & INPUT



If I were this park I would want...

Design this park...

My favorite thing to do in a park is...

In this park I would like to see...



BASKETBALL COURT

TENNIS COURT

WATER PARK

LOTS OF TREES

FITNESS CLASSES

PICNIC AREA

CAROUSEL

GYMNASTICS

BASEBALL FIELD

FITNESS CENTER

WALKING TRAIL

BIKE PATH

PICNIC TABLES

TRAMPOLINE

BBQ GRILL

DOG PARK

PLAYGROUND

ICE CREAM STAND

SEESAW

SWINGS

PING PONG

EXERCISE TRAIL

POOL

RESTROOMS

WATER FOUNTAINS

POOL TABLE

SLIDES

KIDDIE POOL

GREEN HOUSE

SOCCER FIELD



2018 PUBLIC MEETING 1

JUNE 21, 2018





Skate Ramps



Bocce Ball



Ping Pong



Playground for Teens



Basketball Court



Extreme Fitness Equipment



Playground for Children



Zipline

PRIORITIES

1

2

3





Butterfly Garden



Tree Shade



Trellis



Large Splash Pad



Elevated Platform/Stage



Small Splash Pad



Shade Pavilion



Restrooms

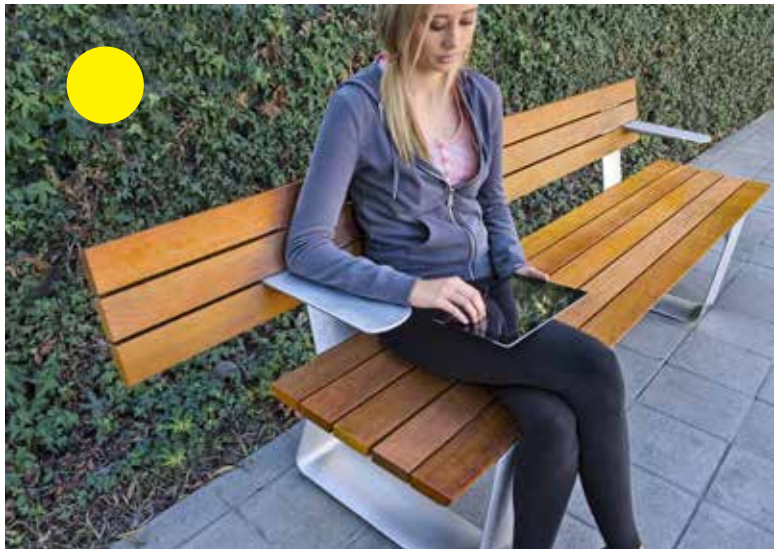
PRIORITIES

1

2

3





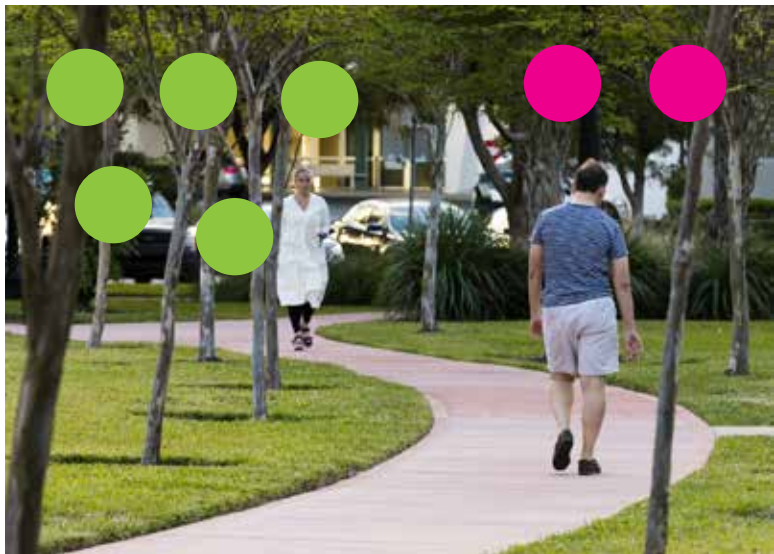
Seating



Picnic Tables



Movies in the Park



Walking/Biking Trail



Chess/Checkers Board Tables



Vita Course Stations

PRIORITIES



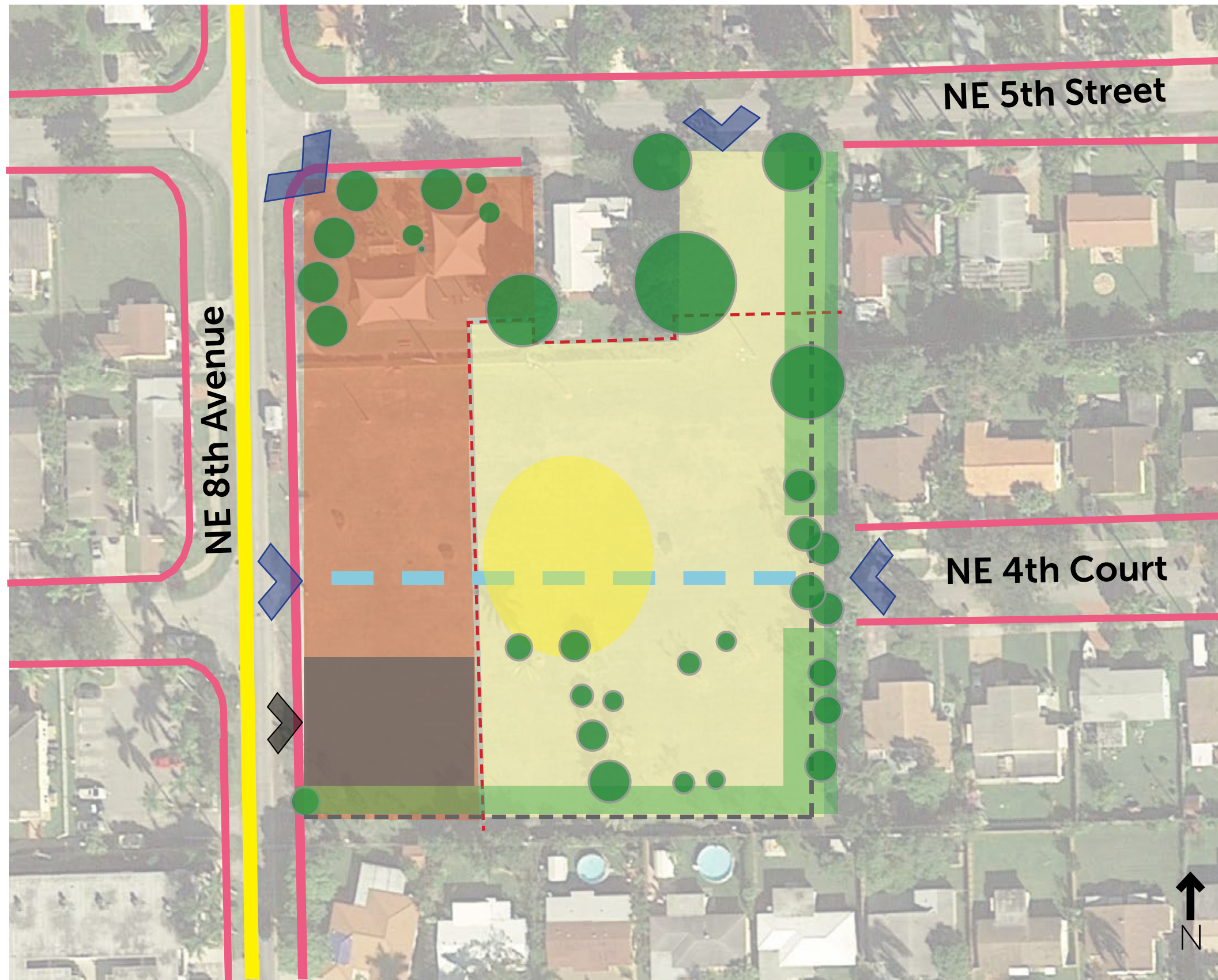


PUBLIC MEETINGS - COMMUNITY CANVASSING
JUNE 16 & JULY 7, 2018



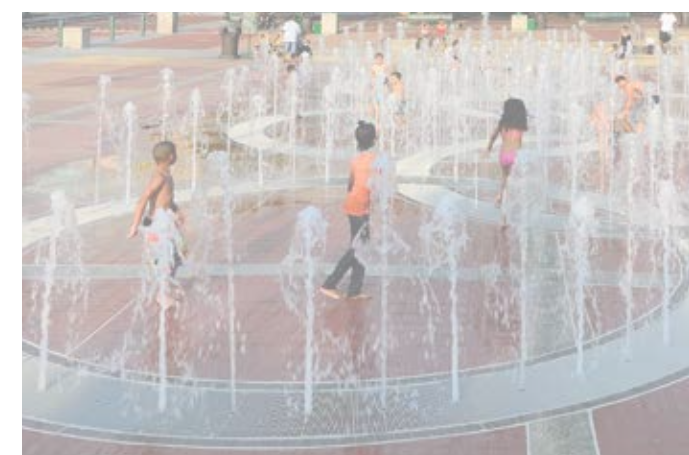
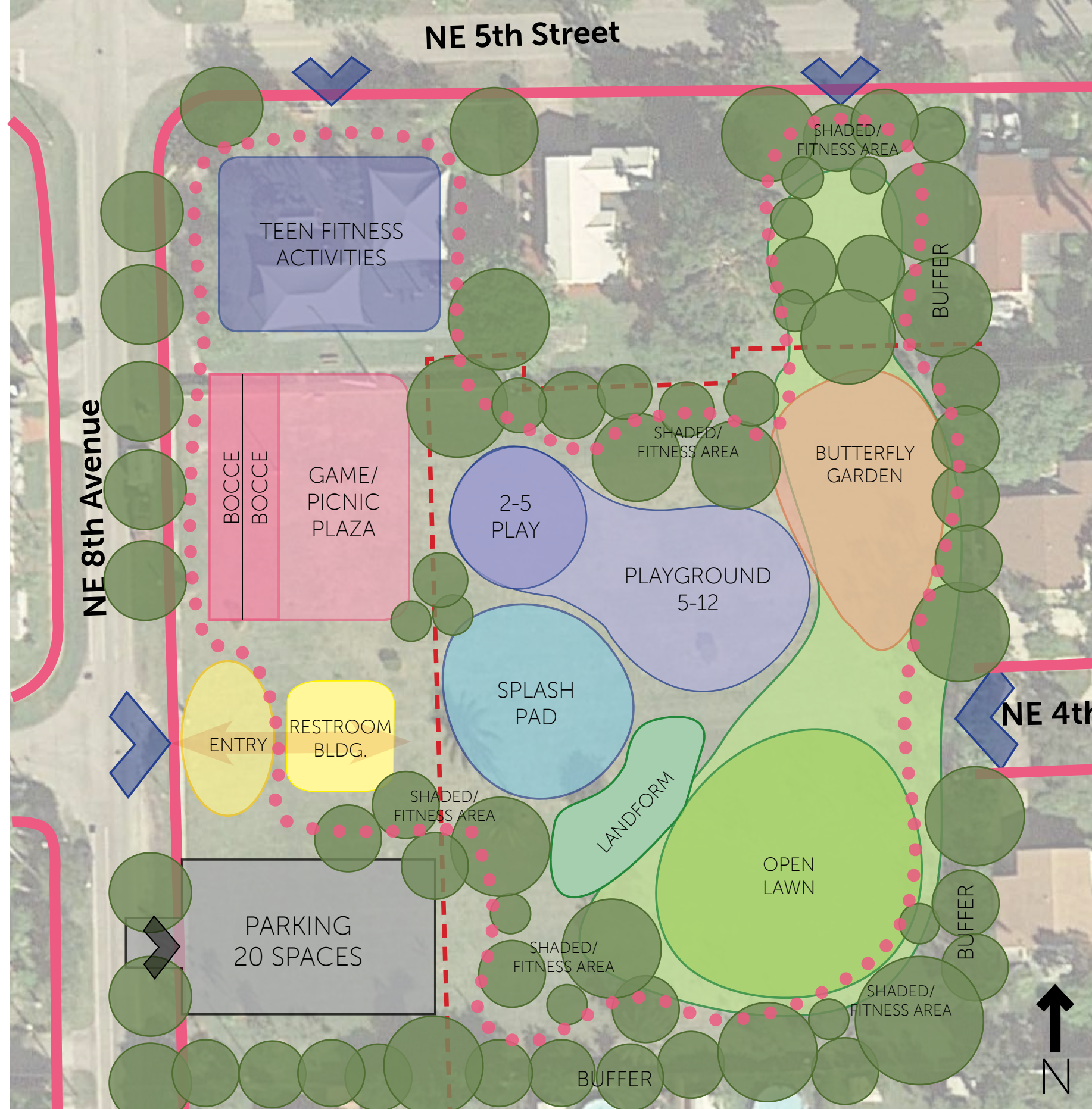
PUBLIC MEETING 2 - DESIGN APPROACH

JULY 12, 2018



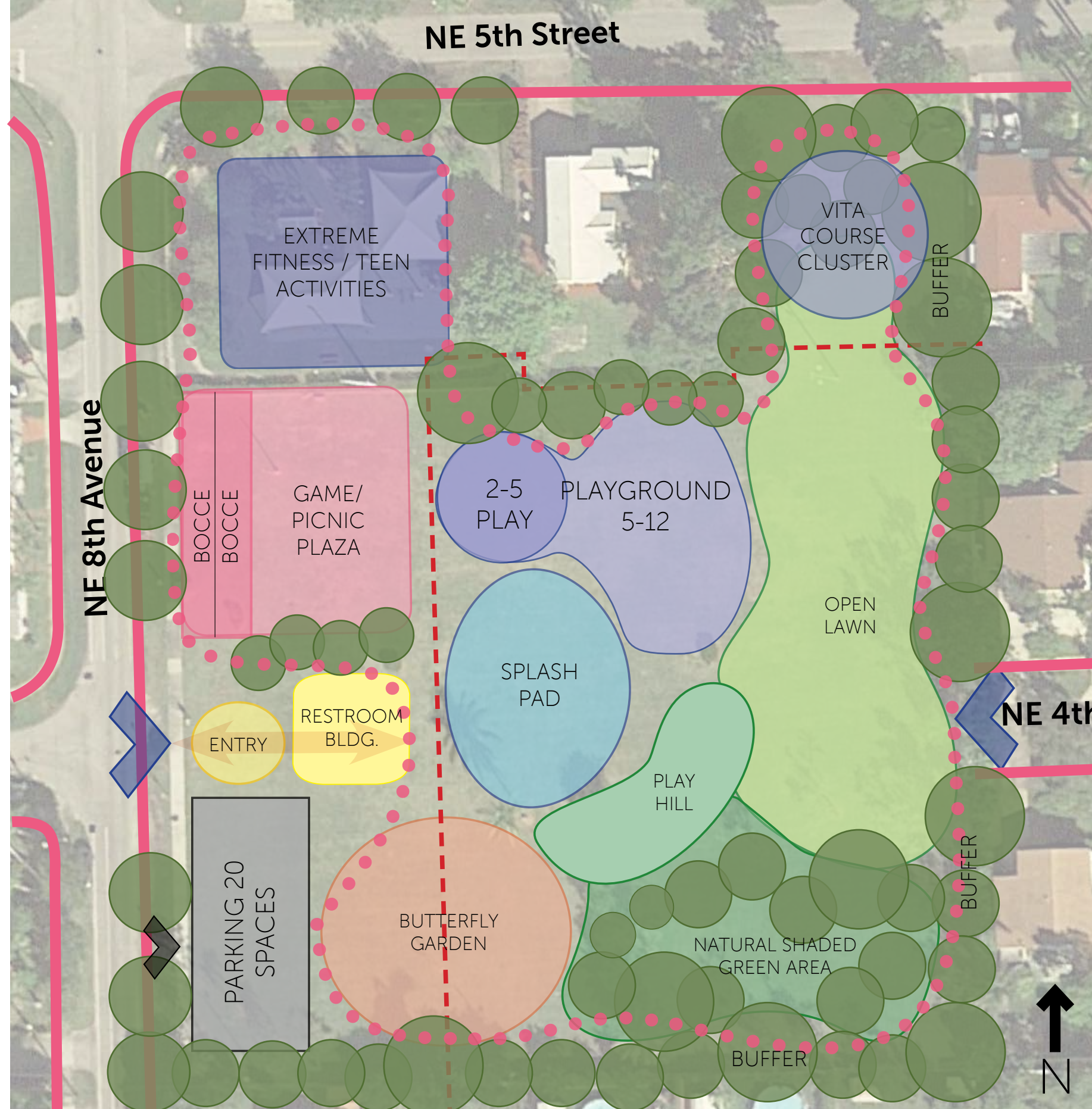
- Existing sidewalks connecting to park
- Existing bike lanes adjacent to park
- - - 100' setback from street for children's activities
- ↙ Main access points
- Vegetated buffer
- Trees and palms to be preserved or relocated
- Active area
- Passive area with playgrounds
- - - Uniform fencing along residences
- ↙ Vehicular Entry
- Fenced Parking (20 spaces)
- - - View Corridor





- Existing sidewalks connecting to park
- Fitness Trail
- Main entries to park
- Vehicular Entry
- 100' setback from street for children's play

CONCEPTUAL PLAN 1



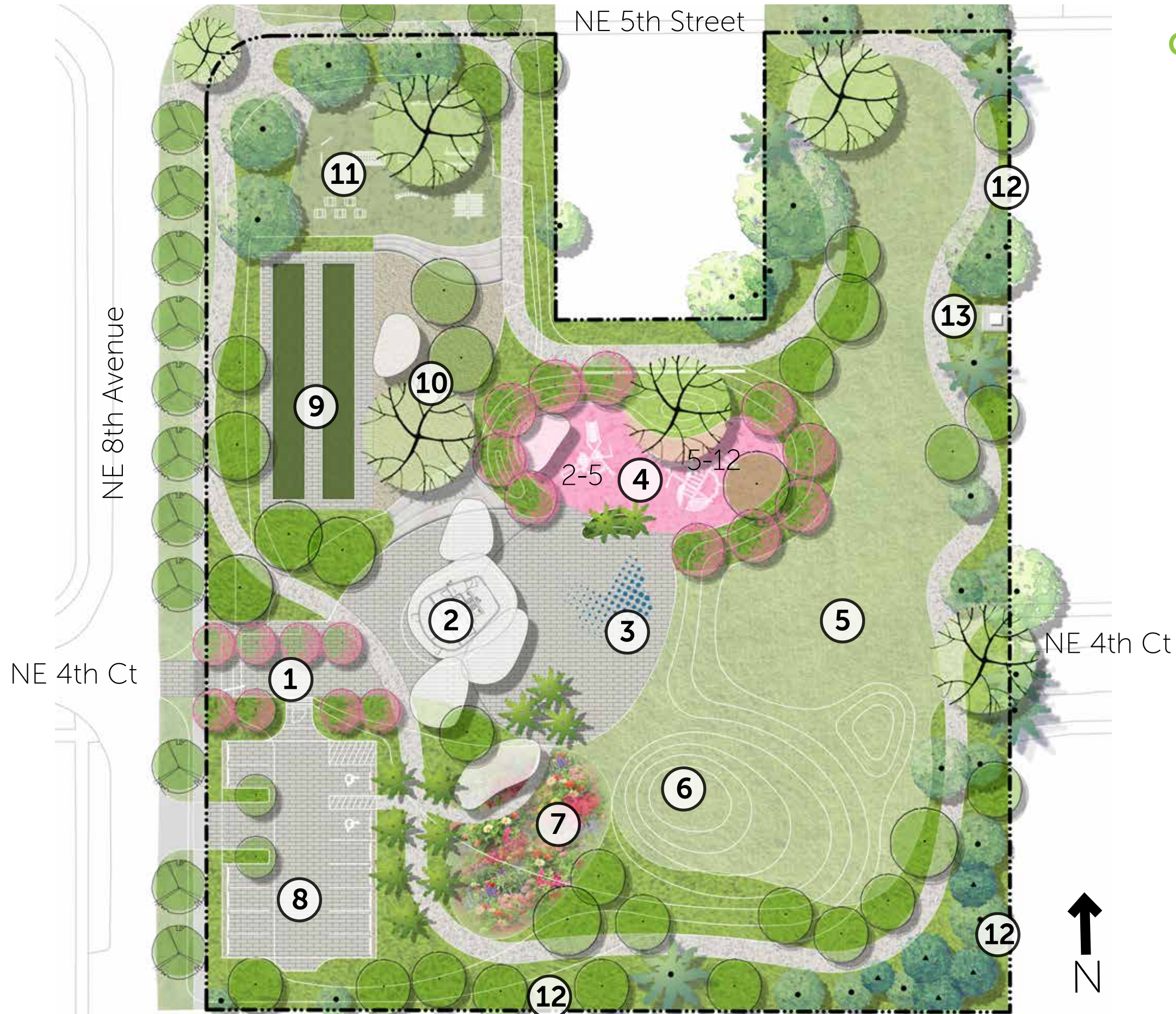
- Existing sidewalks connecting to park
- Walking Trail
- Main entries to park
- Vehicular Entry
- 100' setback from street for children's play

CONCEPTUAL PLAN 2

CONCEPTUAL SITE PLAN





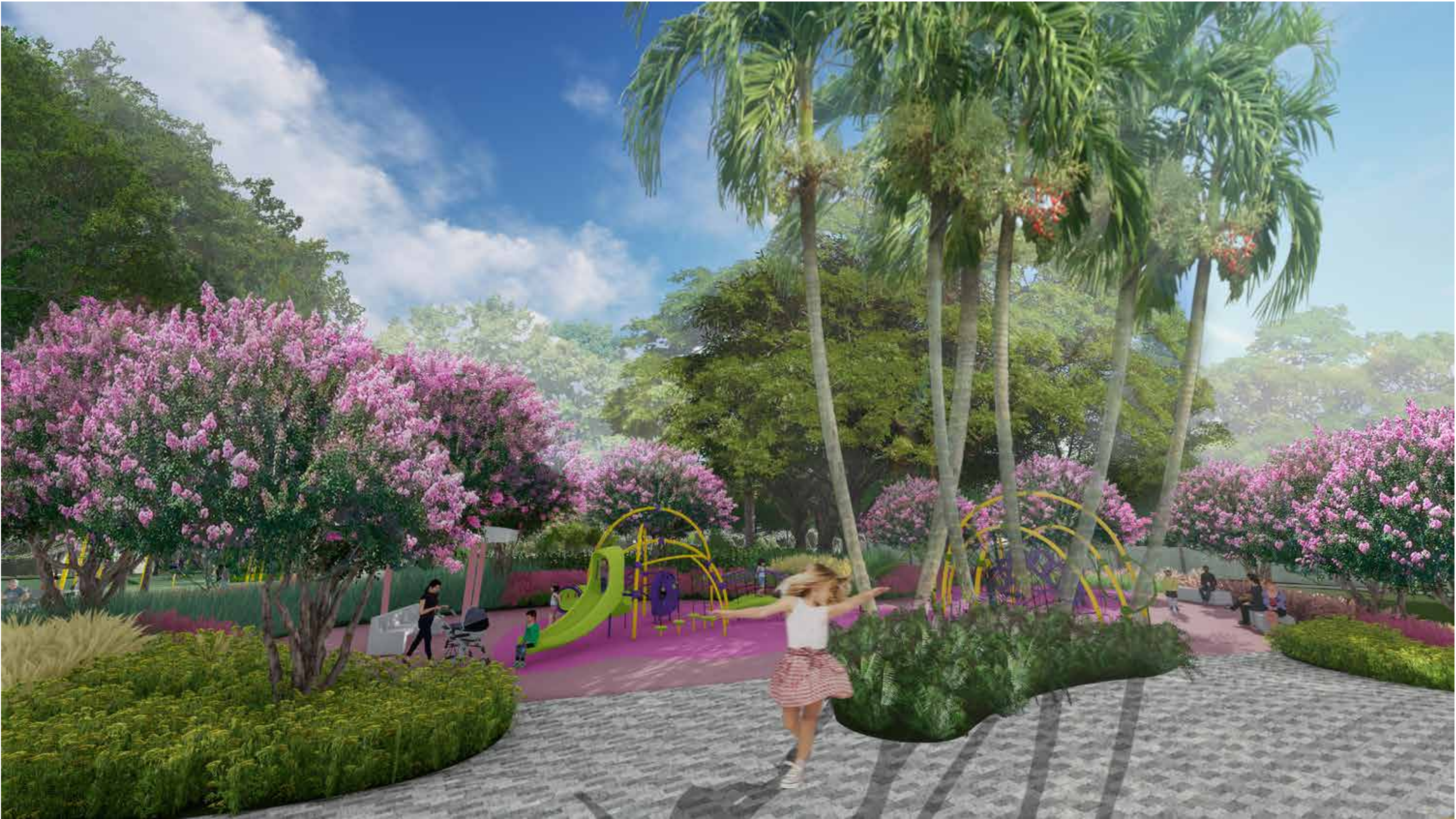


CONCEPTUAL SITE PLAN

\$4.1 Million Probable Cost

- ① Entry plaza
- ② Restroom / Storage & Shade Structures (6)
- ③ Multi-use Splash plaza
- ④ Playground
- ⑤ Lawn
- ⑥ Play hill (14' ht)
- ⑦ Butterfly garden
- ⑧ Gated parking lot (11 spaces + 2 ADA)
- ⑨ Bocce courts
- ⑩ Game and picnic plaza
- ⑪ Extreme fitness course for teens & adults
- ⑫ Uniform fencing along residences
- ⑬ New transformer



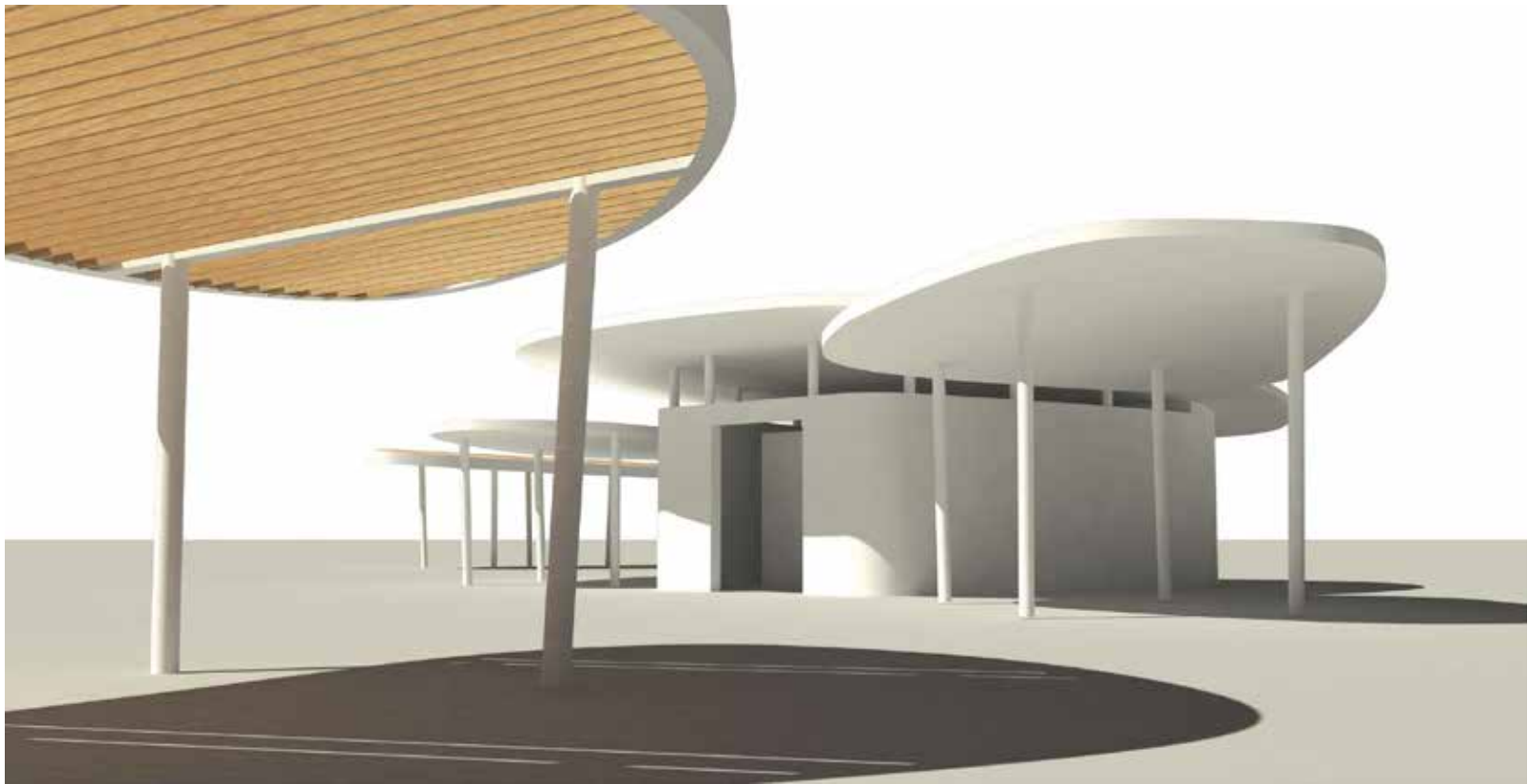
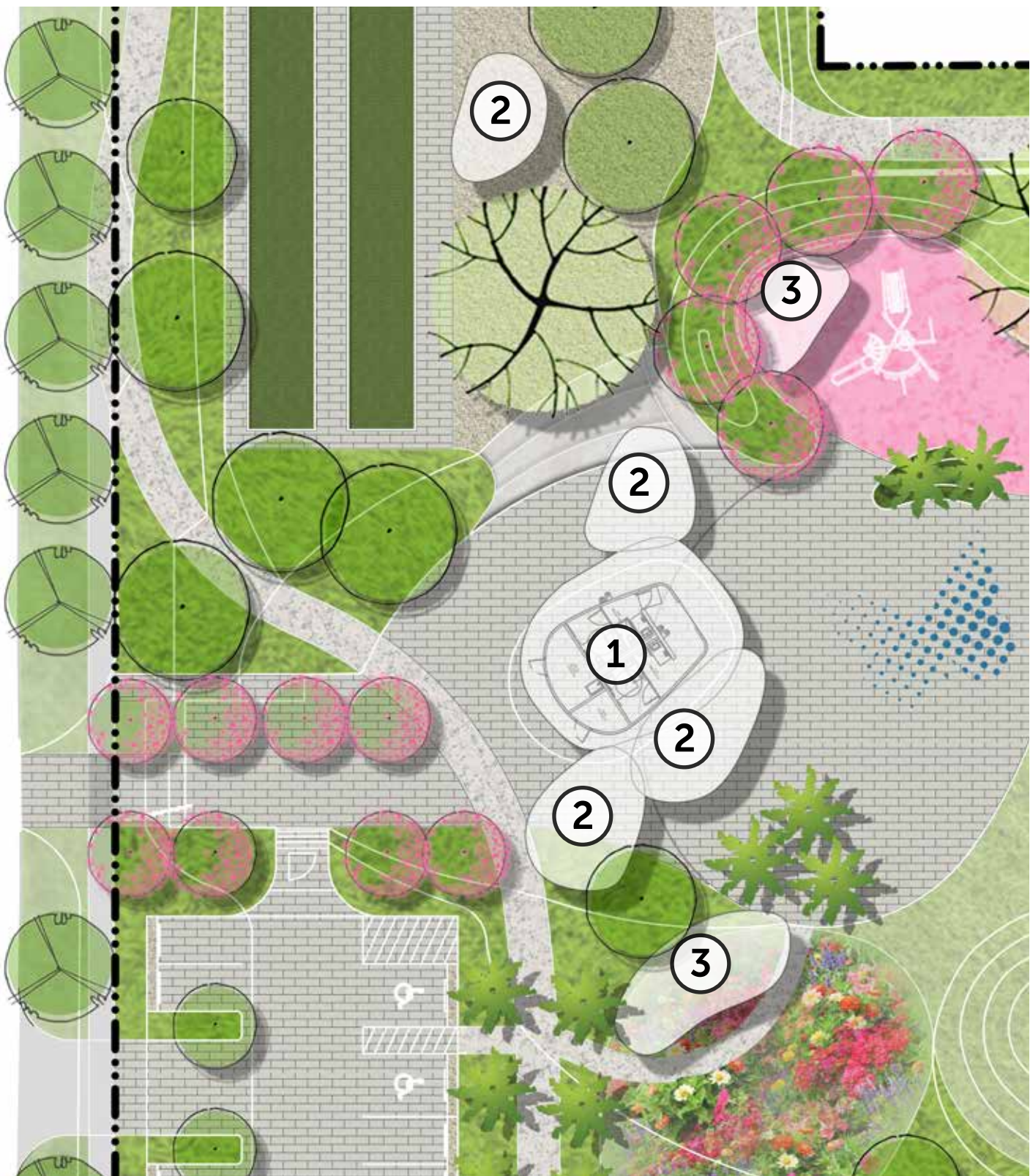




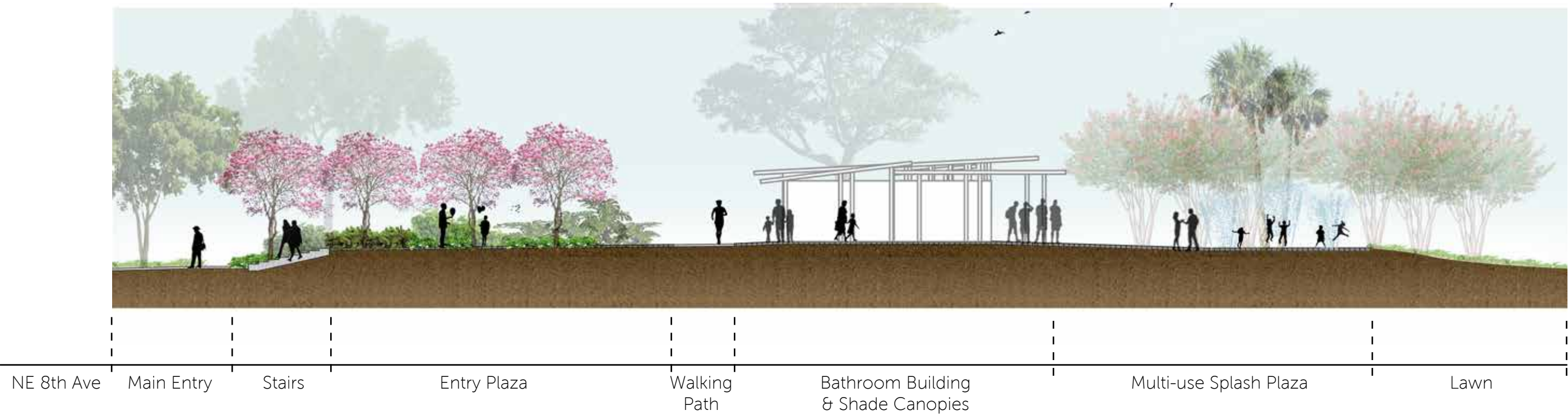


ARCHITECTURE CONCEPT

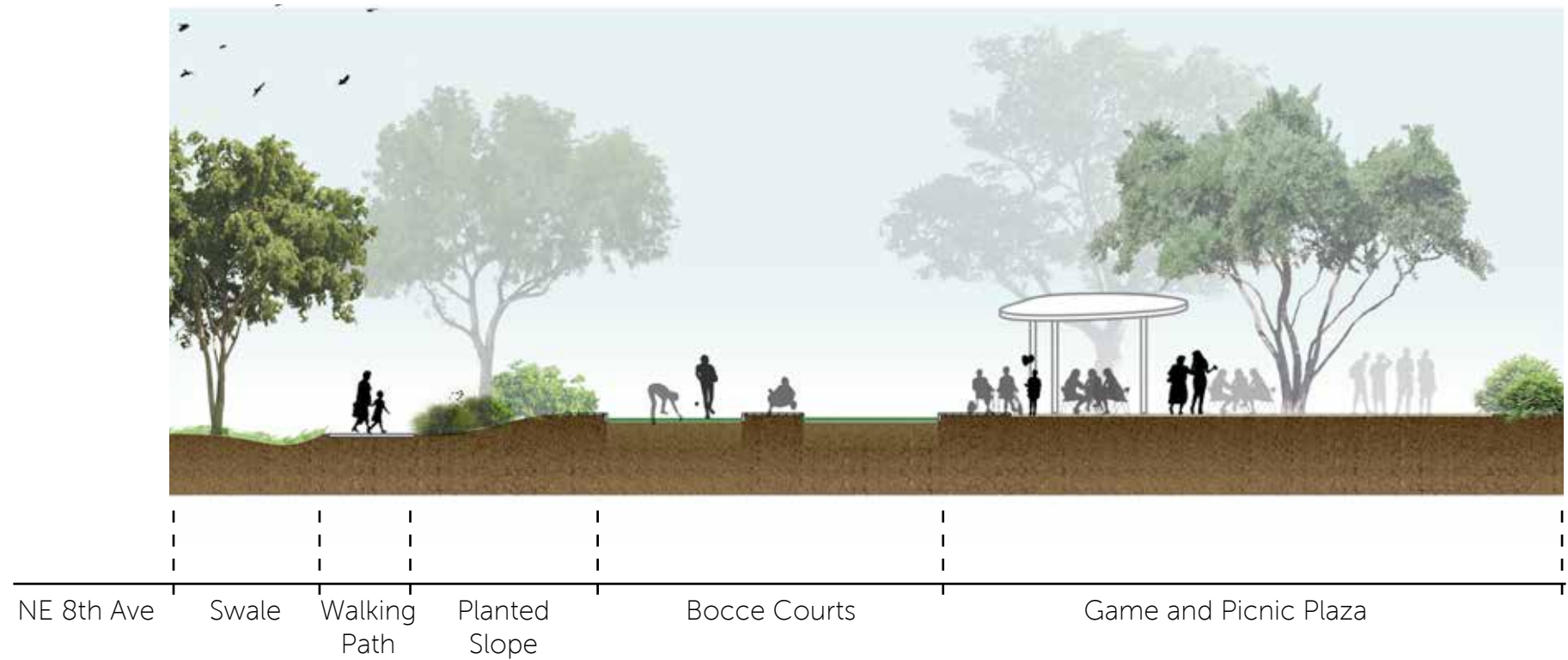
- ① Restroom and storage building
- ② Solid overhead canopy
- ③ Trellised overhead canopy



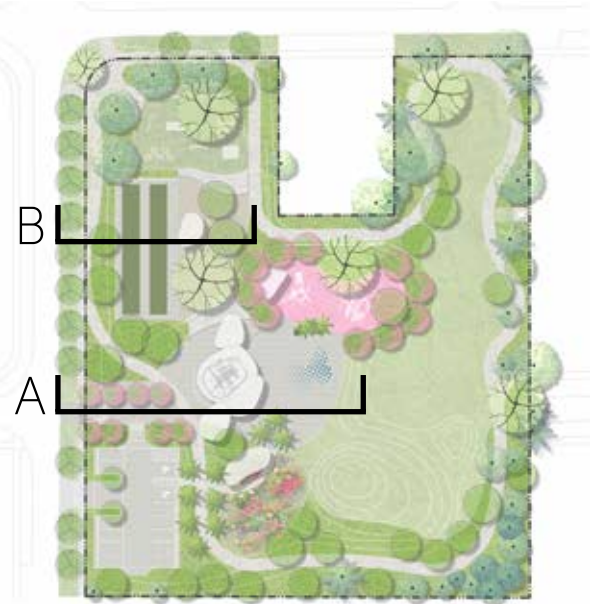
A: SECTION THROUGH ENTRY & MULTI-USE SPLASH PLAZA



B: SECTION THROUGH BOCCE COURTS & GAME PLAZA



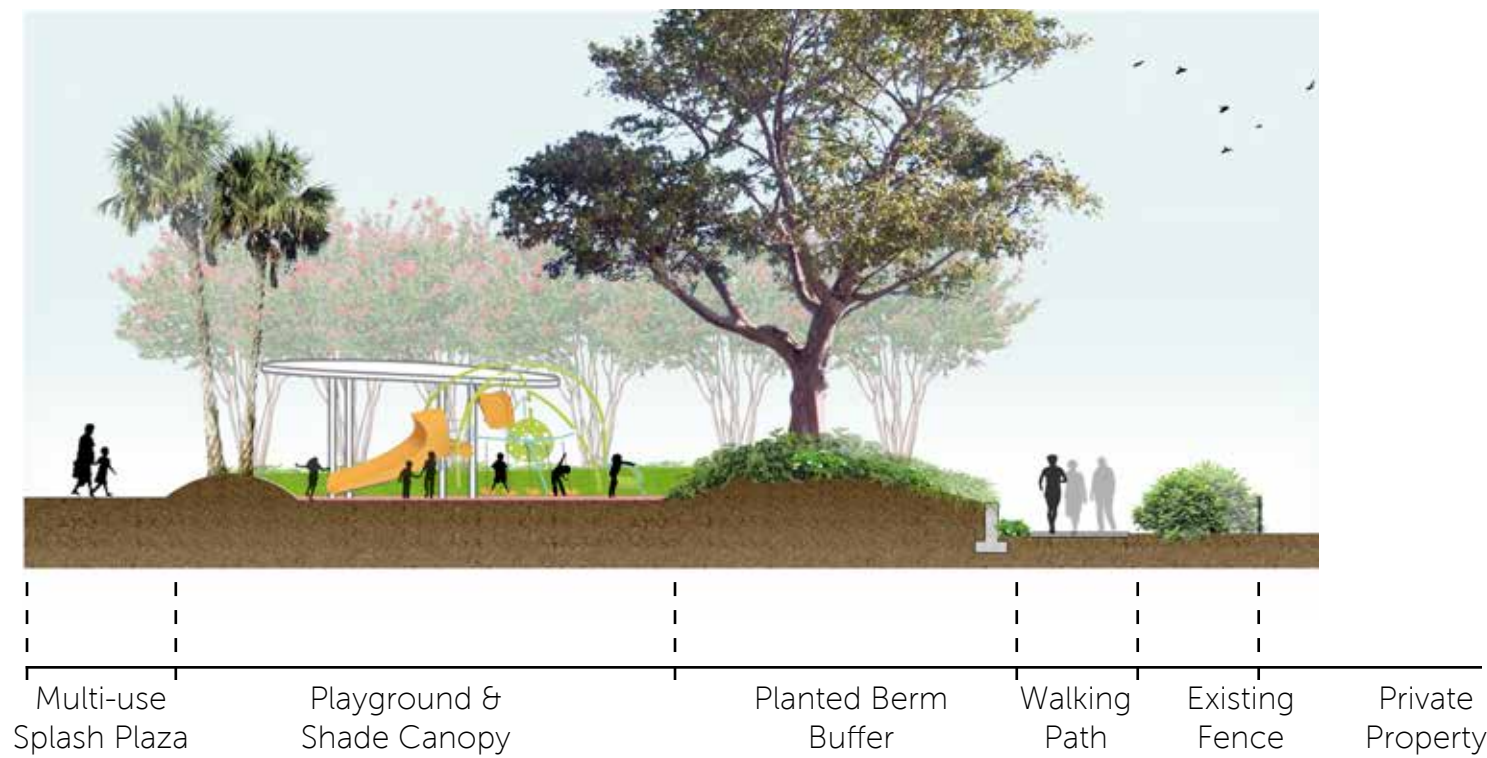
KEY PLAN



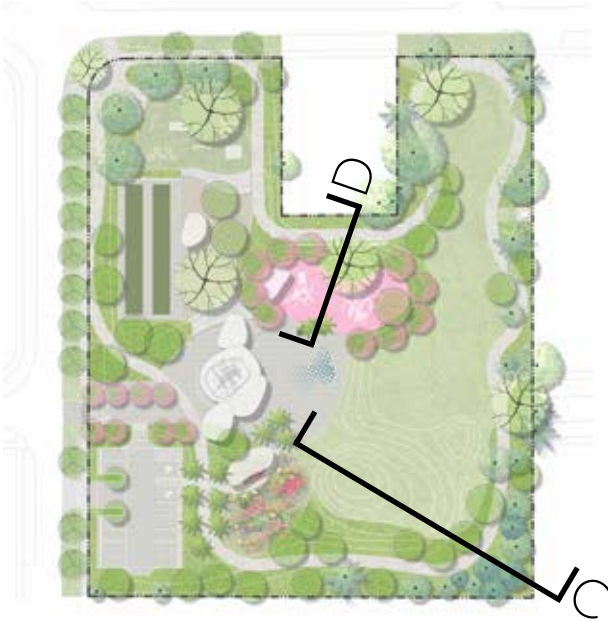
C: SECTION THROUGH PLAY HILL



D: SECTION THROUGH PLAYGROUND



KEY PLAN



LARGE TREES



Live Oak
Quercas virginiana



Floss Silk Tree
Ceiba speciosa



Gumbo Limbo
Bursera simaruba



Mahogany
Swietenia mahogani

SMALL TREES



Pigeon Plum
Cocoloba diversifolia



Silver Buttonwood
Conocarpus erectus sericeus



Pink Trumpet Tree
Tabebuia heterophylla



Green Buttonwood
Conocarpus erectus

PALMS



Florida Thatch Palm
Thrinax radiata



Sabal Palm
Sabal Palmetto



Solitaire Palm
Ptychosperma elegans



Veitchia Palm
Veitchia montgomeryana

GRASSES



Pink Muhly Grass
Muhlenbergia capillaris



White Fountain Grass
Pennisetum villosum



Giant Lily Turf
Liriope muscari 'Evergreen Giant'



Florida gamagrass
Tripsacum floridanum



Fakahatchee Grass
Tripsacum dactyloides

SHRUBS



Coontie
Zamia pumila



Horizontal Cocoplum
Chrysobalanus icaco 'Horizontalis'



Pink Egyptian Star Cluster
Pentas lanceolata



Wild Coffee
Psychotria nervosa



Saw Palmetto
Serenoa repens



Locust Berry
Byrsonima lucida



Silver Saw Palmetto
Serenoa repens 'Cinerea'



Monstera
Monstera deliciosa



Ficus 'Green Island'
Ficus microcarpa



Ti Plant
Cordyline fruticosa

GROUNDCOVERS



Boston Fern
Nephrolepis exaltata



Wart Fern
Microsorium scolopendrum



Perennial Peanut
Arachis glabrata

PLANTING PALETTE

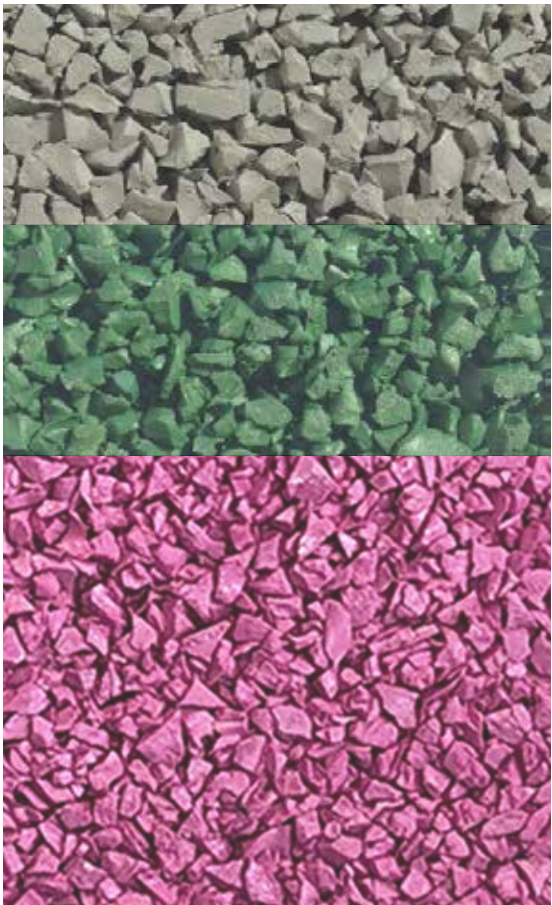




Concrete



Permeable pavers



Pour-in-place rubberized play surface



Pervious concrete



Concrete pavers

Extreme Fitness for Teens & Adults



Playground



Splash Plaza



specific equipment to be determined
representative examples only

SITE FURNISHINGS



specific furniture to be determined
representative examples only

COSTS



PARKS MASTER PLAN

- 2011
- \$10,000 Allocated
- For minimal improvements to small, corner playground only

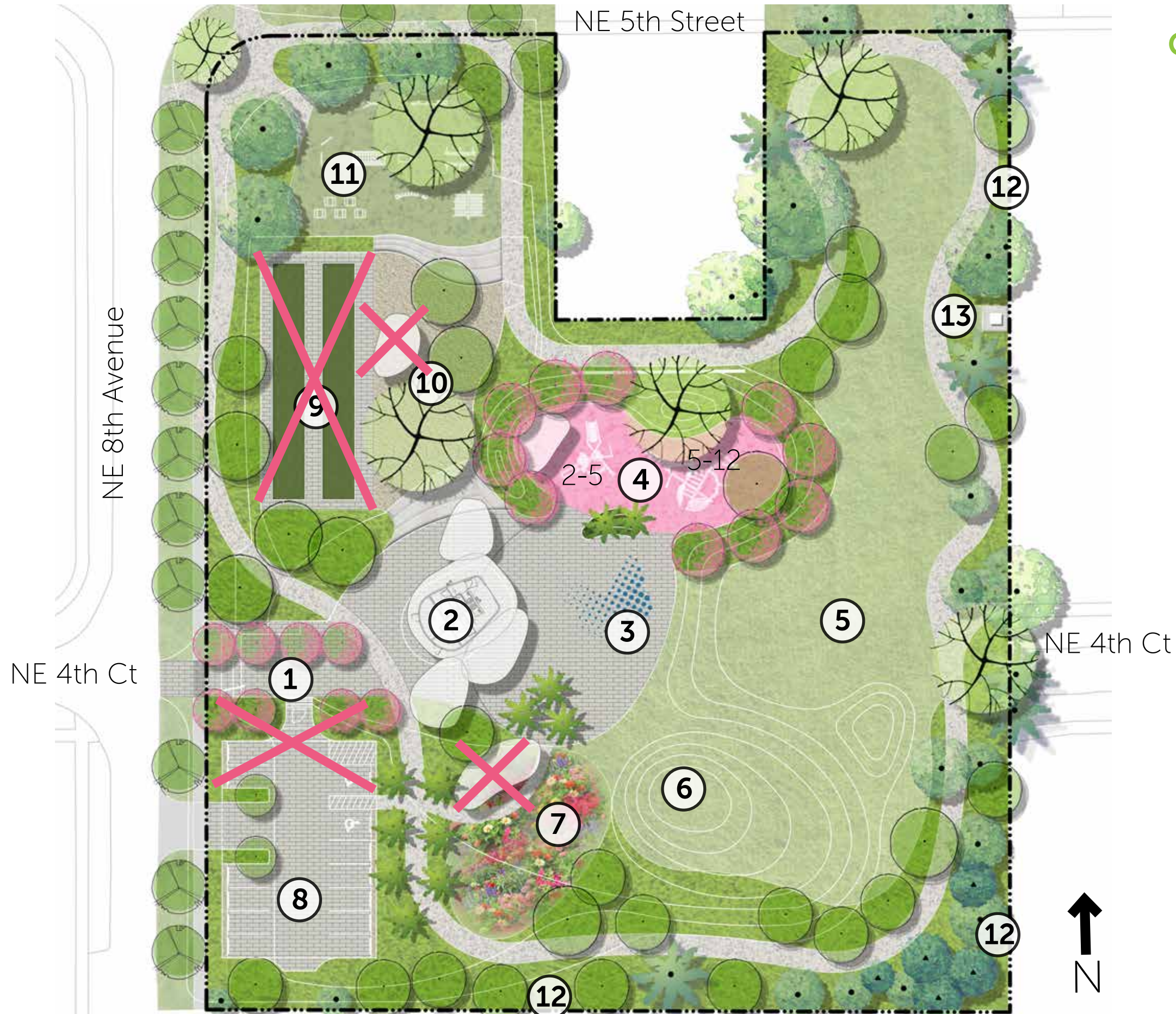
PARKS G.O. BOND

- 2014
- \$3.2 Million Allocated
- Included design fees, administrative costs and construction costs for the entire 2.4 acre site
- Park Program:
 - Playground
 - Exercise Trail
 - Water Fountains
 - Landscaping
 - Park Furniture
 - Green Space

CONCEPTUAL SITE PLAN

- 2018
- \$4.1 Million Conceptual Estimate of Probable Cost
- Includes design fees and construction costs for the entire 2.4 acre site
- Park Program:
 - Playground
 - Exercise Trail
 - Water Fountains
 - Landscaping
 - Park Furniture
 - Green Space
 - Parking Lot
 - Residential Perimeter Fencing
 - Splash Pad
 - Restroom Building
 - Architectural Shade Structures
 - Extreme Fitness Equipment
 - Bocce Courts
 - Game & Picnic Plaza
 - Butterfly Garden
 - Utility Undergrounding

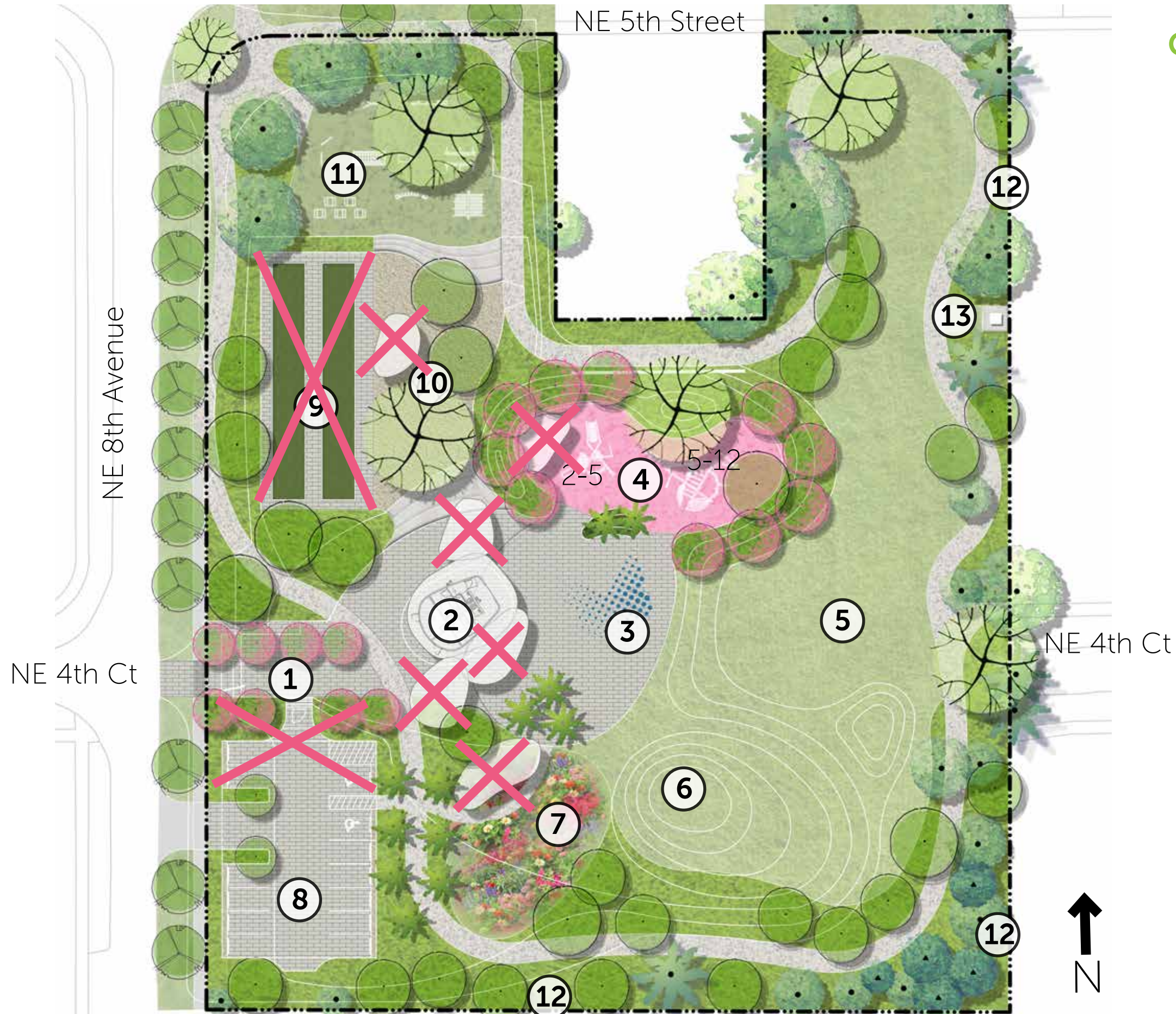




CONCEPTUAL SITE PLAN

\$3.2 Million Probable Cost

- ① Entry plaza
- ② Restroom / Storage & Shade Structures ~~(6)~~ (4)
- ③ Multi-use Splash plaza
- ④ Playground
- ⑤ Lawn
- ⑥ Play hill (14' ht)
- ⑦ Butterfly garden
- ⑧ Gated parking lot ~~(11 spaces + 2 ADA)~~ (9 spaces + 1 ADA)
- ⑨ ~~Bocce courts~~
- ⑩ Game and picnic plaza
- ⑪ Extreme fitness course for teens & adults
- ⑫ Uniform fencing along residences
- ⑬ New transformer



CONCEPTUAL SITE PLAN

\$2.6 Million Probable Cost

- ① Entry plaza
- ② Restroom / Storage & Shade Structures
- ③ Multi-use Splash plaza
- ④ Playground
- ⑤ Lawn
- ⑥ Play hill (14' ht)
- ⑦ Butterfly garden
- ⑧ Gated parking lot (11 spaces + 2 ADA) (9 spaces + 1 ADA)
- ⑨ Bocce courts
- ⑩ Game and picnic plaza
- ⑪ Extreme fitness course for teens & adults
- ⑫ Uniform fencing along residences
- ⑬ New transformer

