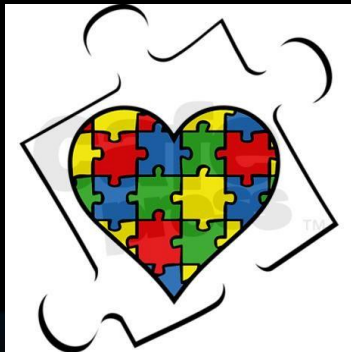




HALLANDALE BEACH POLICE

Autism Awareness & Outreach Program




HBPD GOAL

- As we launch this program, we hope to gain the participation from as many residents as possible.
- To learn more about our residents allows our interactions to become more personable and positively memorable.
- For our residents with Autism, we want them to know we recognize them and that we are here to help them in every way possible.

HOW IT WORKS

- Hallandale Beach Police Department has started a page on our website that allows citizens with autistic family members to register on our system.
- We will upload that information into our confidential database and with communications, so that officers are aware prior to them arriving to the residence.



Office of Regional Communications and Technology
 115 South Andrews Avenue, Room 325, Fort Lauderdale, Florida 33301 * 954-357-8686 * selfhelp@broward.org

OFFICER SAFETY/PREMISE FLAG CAD ENTRY REQUEST

TYPE OF ENTRY **PURGE DATE**
max 1 year

Agency **Beat/Zone**

Address

Business/Complex **Building** **Apartment**

City **Phone Number**

Resident/Subject Name
(Last, First, Middle)

DOB **Height** **Weight**
(MM/DD/YY)

Race **Sex** **Hair Color** **Eye Color**

Scars/Marks/Tattoos

EMERGENCY CONTACT/CALLOUT INFORMATION:

Contact 1 **Phone Number**

Contact 2 **Phone Number**

CAD Entry Comments

Authorized By (Name, Rank, CCN)
minimum Sergeant or Battalion required

Contact Phone Number

HOW IT WORKS CONTINUED

- The information will be kept confidential and made available only to our patrol officers. This process will allow officers who are responding to an incident involving a person with Autism to appropriately prepare for and handle the situation. Ultimately, through this program, we will be improving interactions for all parties involved.
- Our overall goal is to improve our responses and interactions to minimize additional stressors for everyone.
- By knowing triggers and comforts ahead of time, we can approach in a more calming and informed manner.

WALLET CARDS

- Currently on the city website you are directed to:
<https://hallandalebeachfl.gov/1072/Programs> which prompts you to the Disabilities Independence group for the wallet Card.
- These cards will have details of characteristics or behaviors that may make them anxious or afraid.
- Our goal would be to use the information provided from the website intake form to produce in house cards to provide to our autistic families/citizens.
- The card will provide detail on preferred methods of communication:
 - Verbal/Non-Verbal
 - Sign Language
 - Pictures Boards
 - Written Words



RESOURCES

- [https://www.autismspeaks.org/resource-guide/results?service%5B1441%5D=1441&state\[206\]=206&level_of_support\[2161\]=2161](https://www.autismspeaks.org/resource-guide/results?service%5B1441%5D=1441&state[206]=206&level_of_support[2161]=2161)
- Hallandale Beach website link when we get it.



THANK YOU

- Questions?

