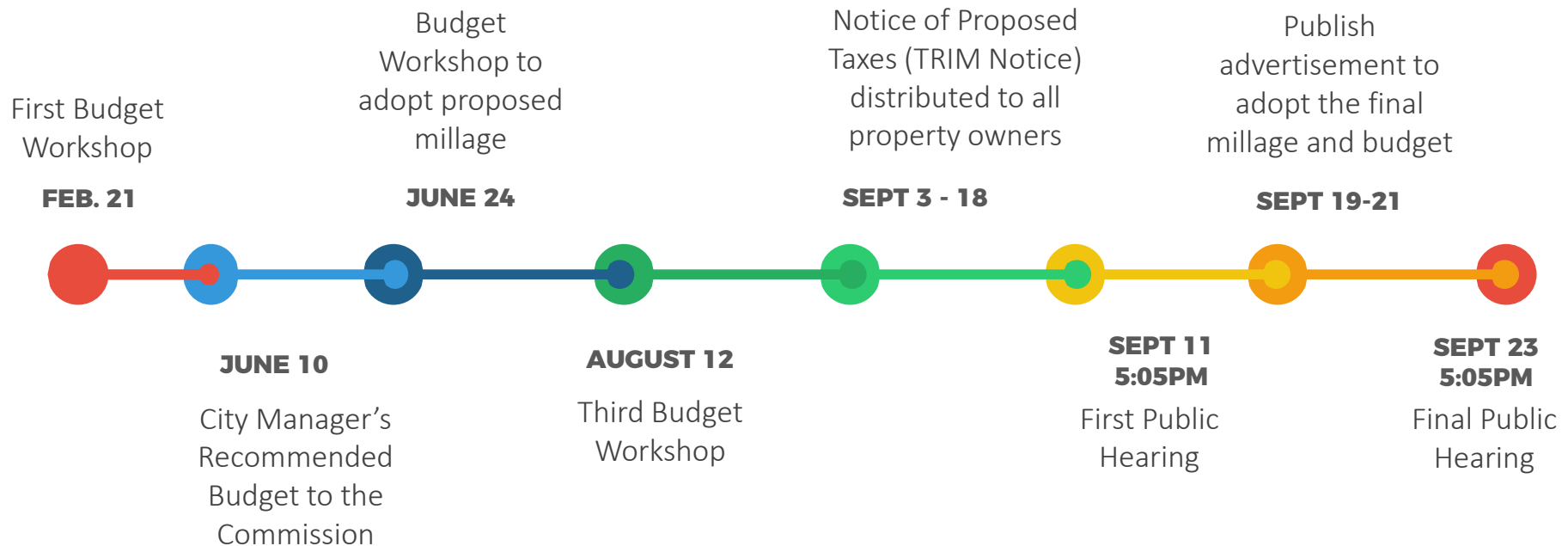




FY19/20 BUDGET WORKSHOP

CITY OF HALLANDALE BEACH

Budget Process Timeline



CURRENT STATUS

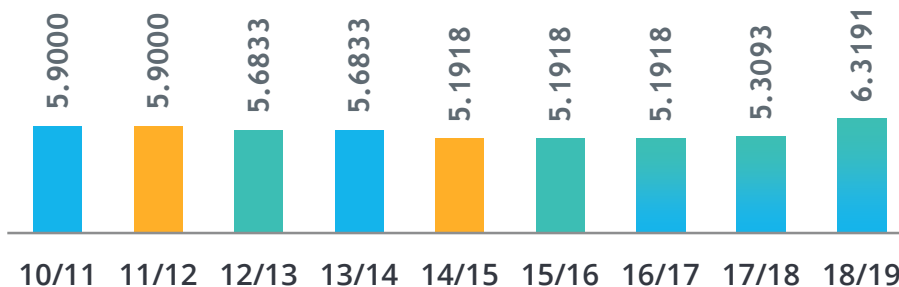
CURRENT FIGURES OF BUDGET

HB MILLAGE TRENDS



OPERATING MILLAGE RATE

Operating Millage Rate is used to determine the amount of property taxes that property owners pay. From 2010 until today, the millage rate has increased .4191. During the past 9 years, the millage rate has decreased 2 times. The effect of this decrease has resulted in certain years having a negative fund balance. Additionally, Hallandale Beach is ranked 21 in operating millage amongst Broward County Cities.



RANK	CITY	OPERATING MILLAGE
1	WESTON	3.3464
2	HILLSBORO BEACH	3.5000
3	LAUDERDALE BY THE SEA	3.5989
4	LIGHTHOUSE POINT	3.5893
5	FORT LAUDERDALE	4.1193
6	PARKLAND	4.4000
7	LAZY LAKE	4.7940
8	SOUTHWEST RANCHES	4.8311
9	POMPANO BEACH	5.1361
10	BROWARD COUNTY	5.4792
11	OAKLAND PARK	5.9985
12	DAVIE	5.6270
13	CORAL SPRINGS	5.8732
14	PEMBROKE PINES	5.6736
15	DANIA BEACH	5.9998
16	PLANTATION	5.8000
17	SUNRISE	6.0543
18	WILTON MANORS	5.9587
19	DEERFIELD BEACH	6.1267
20	COCONUT CREEK	6.5378
21	HALLANDALE BEACH	6.3191
22	MARGATE	6.5594
23	MIRAMAR	7.1172
24	SEA RANCH LAKES	7.2500
25	COOPER CITY	7.1347
26	TAMARAC	7.2899
27	NORTH LAUDERDALE	7.4000
28	HOLLYWOOD	7.4665
29	PEMBROKE PARK	8.5000
30	WEST PARK	8.6500
31	LAUDERDALE LAKES	8.6000
32	LAUDERHILL	7.9898

Special Revenue Funds

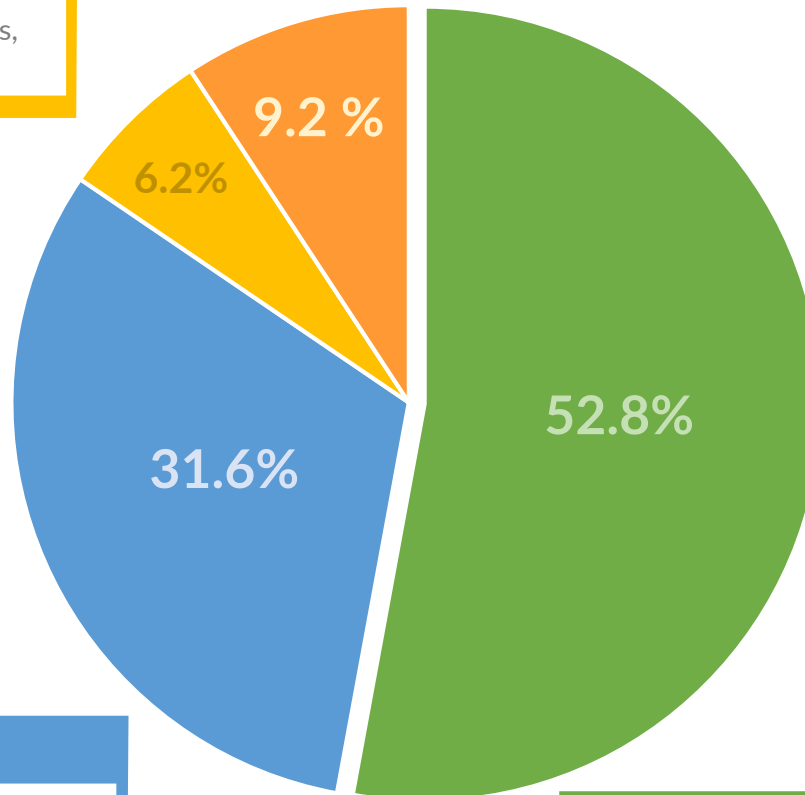
\$ 8,531,424

Law Enforcement Trust Fund,
Transportation, GISND, TISND,
Grant, PD Outside Services,
Permits & Inspections

Additional Funds

\$12,652,171

Debt Service, Capital Fund,
Internal Service Fund



Enterprise Fund

\$ 43,196,468

Cemetery, Sanitation, Utility,
Stormwater, Utility Impact Fee

General Fund

\$ 72,296,698

Total City Budget \$136.7 Million

The Adopted Budget for FY 2019 is \$136.7 Million and is comprised of four main parts – the General Fund, Enterprise Fund, Special Revenue Funds, and additional funds that support the Parks GO Bond, Debt Service, Internal Service Funds (Fleet, General Liability, Worker's Comp.), and Capital Projects.

Expenditures by Fund Types

How we are Funded

FY 18/19 BUDGET \$ 136,676,761

GENERAL FUND

\$72,296,698

SPECIAL REVENUE FUND

\$8,531,424

POLICE TRAINING
\$43,265

LAW ENFORCEMENT TRUST
\$160,943

POLICE EQUITABLE SHARING
\$199,500

TRANSPORTATION
\$1,808,636

GOLDEN ISLES/3 ISLANDS
\$348,770

POLICE OUTSIDE SVCS \$1,420,035

GRANTS
\$632,328

PERMITS & INSPECTIONS
\$3,480,017

ENTERPRISE FUND

\$43,196,468

CEMETERY
\$246,750

SANITATION
\$7,073,128

UTILITY
\$29,963,222

TRANSPORTATION
\$4,502,823

STORMWATER
\$4,502,823

UTILITY IMPACT FEE \$1,410,545

CAPITAL FUND

\$1,683,717

PARKS G.O. BOND
\$1,603,717

CAPITAL PROJECTS
\$80,000

DEBT SERVICE FUND

\$5,433,096

G.O. BOND PAYMENT
\$3,132,308

CAPITAL PROJECTS DEBT FUND
\$2,300,788

INTERNAL SERVICE FUND

\$5,535,358

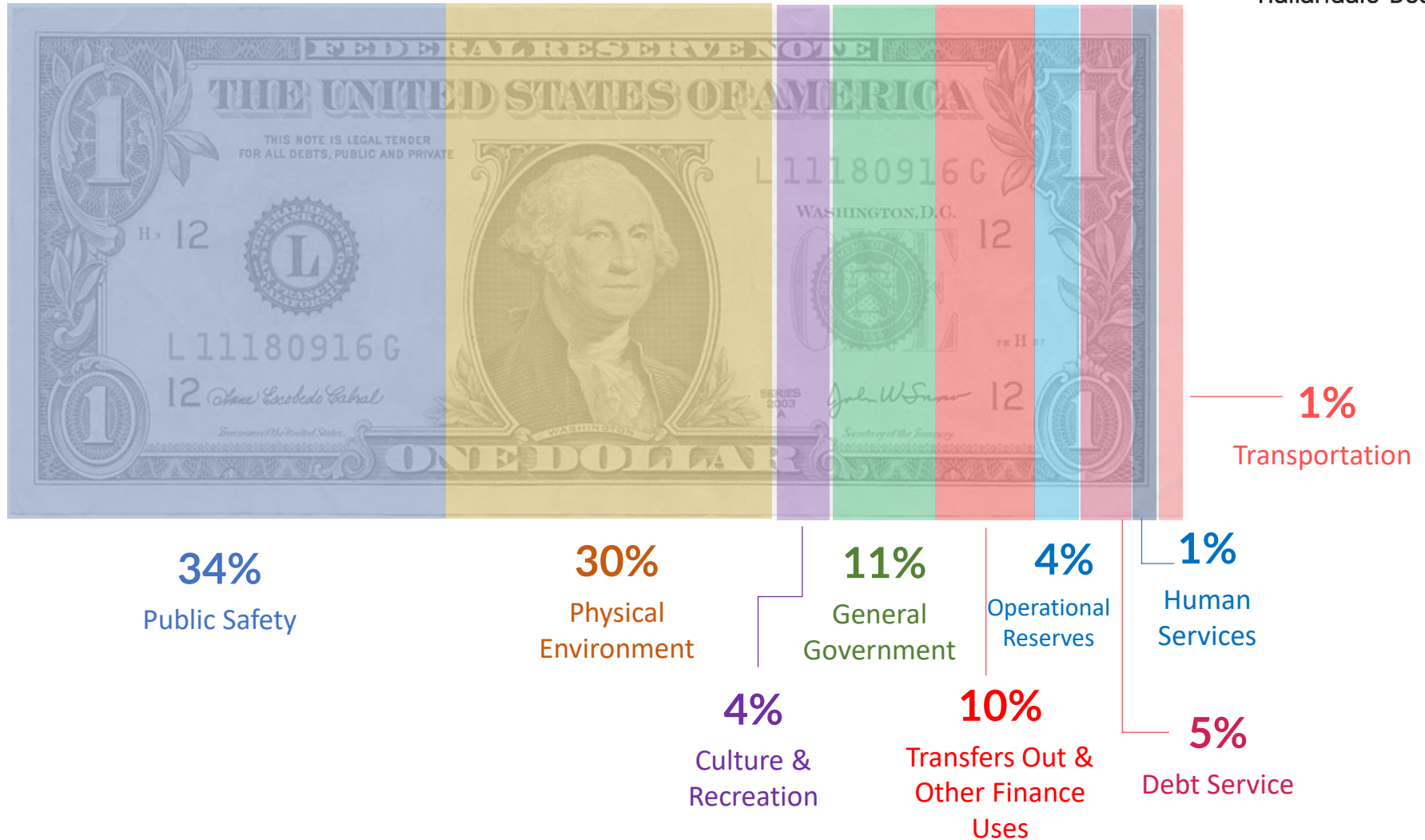
FLEET SERVICE
\$2,616,200

GEN. LIABILITY SELF INSURANCE
\$1,879,059

WORKERS COMPENSATION
\$1,040,099

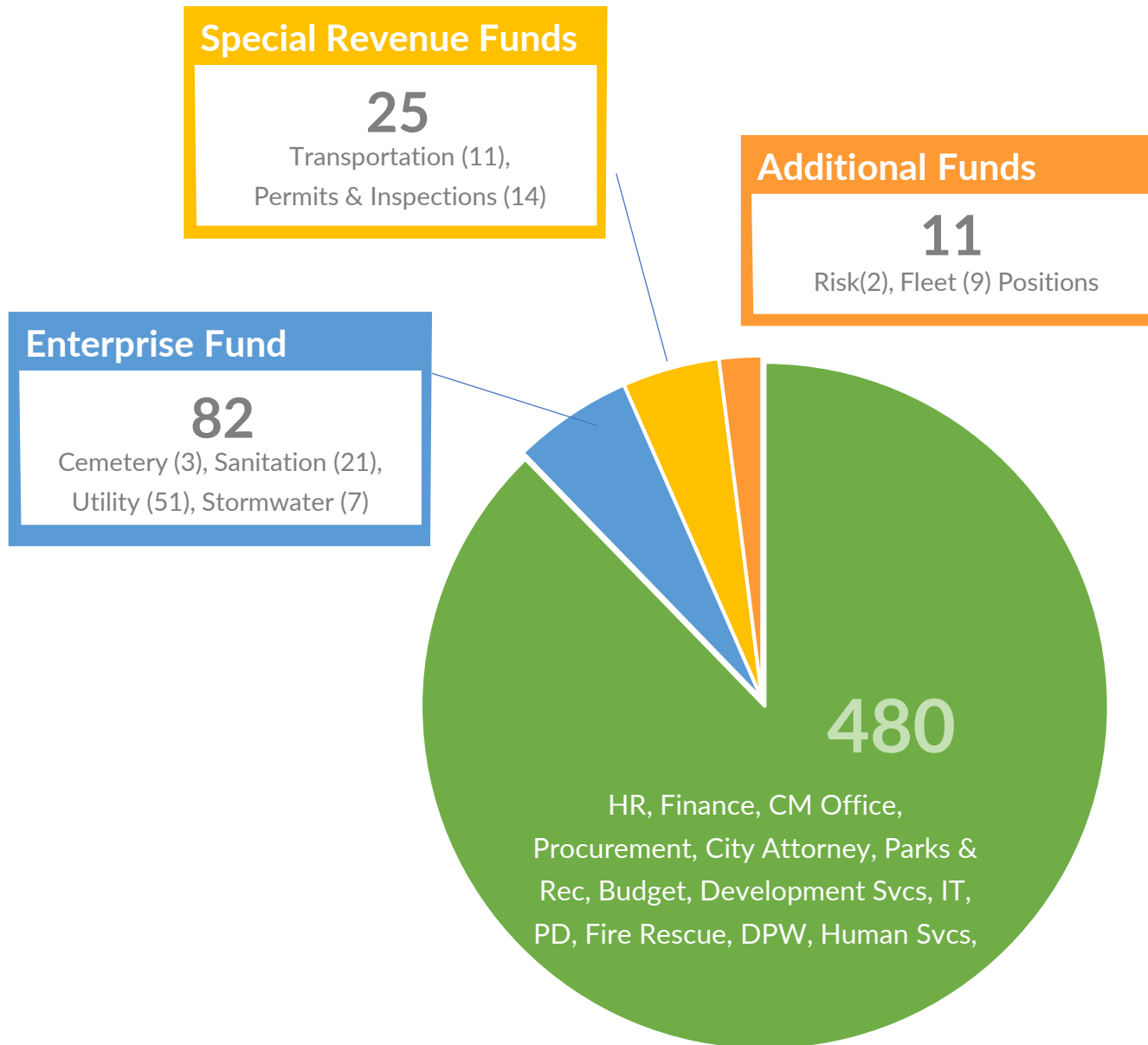
Expenditures by Function

City Core Services



Workforce by Fund 598 Positions

A bulk of our workforce is sustained by the General Fund. The majority of the General Fund is sustained by Property Taxes and other revenues.

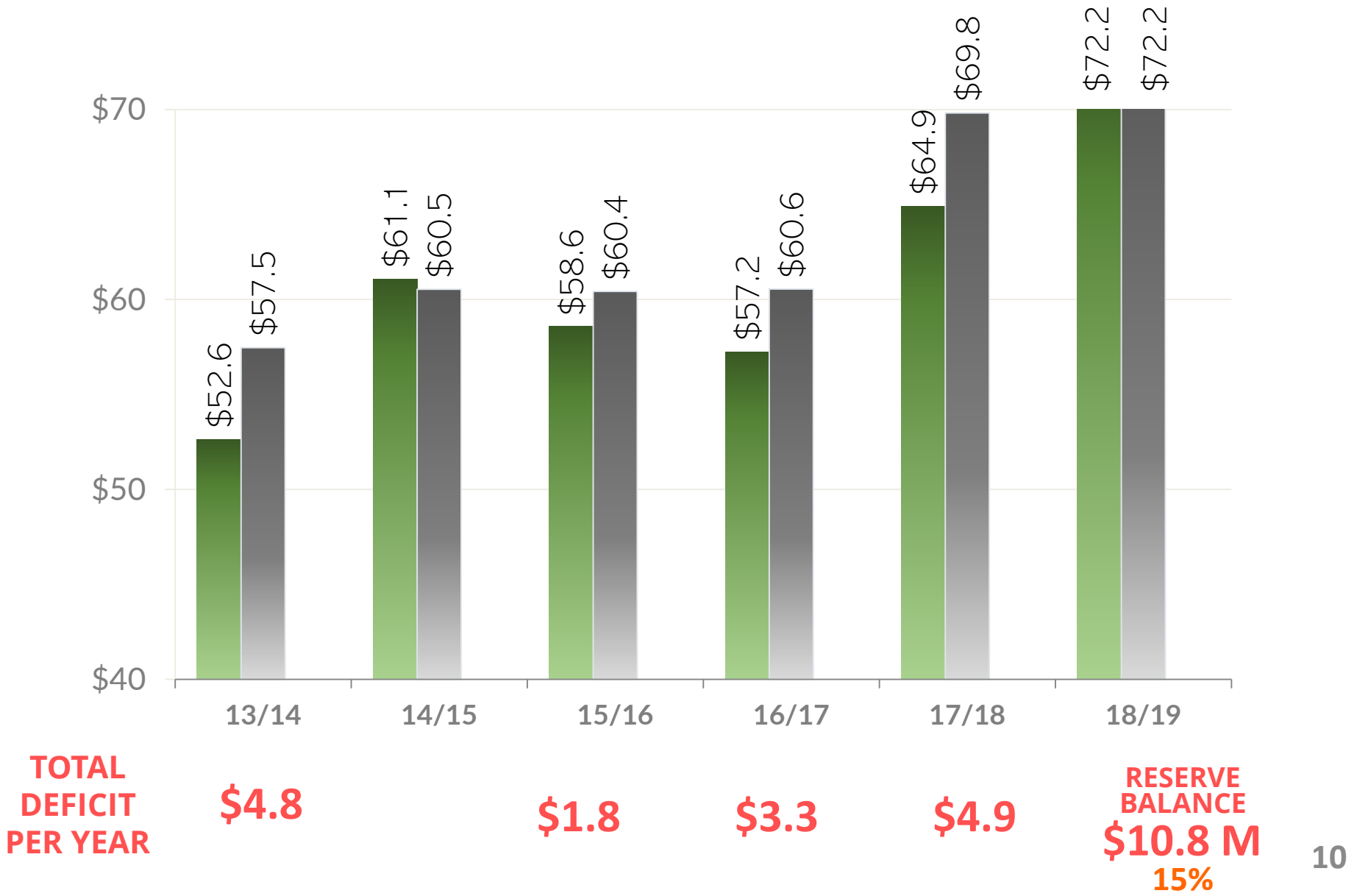


Staffing By Department



DEPARTMENT	FY 17/18 POSITIONS	FY 18/19 POSITIONS	GENERAL FUND COST	% SALARY/ BENEFITS
CITY COMMISSION	5	5	490,411	76 %
CITY MANAGER'S OFFICE	8	9	1,553,476	92 %
BUDGET	3	4	544,052	95 %
PROCUREMENT	5	5	626,400	85 %
CITY ATTORNEY	5	5	1,253,041	59 %
FINANCE	20	20	1,289,397	90 %
INNOVATION TECHNOLOGY	7	7	2,124,087	41 %
HUMAN RESOURCES	9	9	924,007	84 %
CITY CLERK OFFICE	3	3	445,072	72 %
POLICE	147	146	23,622,477	95 %
FIRE RESCUE	93	92	15,784,723	94 %
PUBLIC WORKS	132	132	2,202,774	78 %
DEVELOPMENT SERVICES	31	32	2,070,942	84 %
HUMAN SERVICES	42	42	1,377,302	74 %
PARKS AND RECREATION	86	87	4,781,702	72 %
Total	596	598	59,089,863	% SALARY/ BENEFITS

General Fund Revenues & Expenditures Trends



CHALLENGES

INCREMENTAL COSTS FOR FY 19/20

Challenge

One Time Revenues

The biggest challenge for next year's budget is to balance the General Fund without a tax increase and the use of reserves if we stay status quo, since \$5.5 million in the FY 18/19 budget were one-time revenues.

REVENUE	AMOUNT
Deferred General Fund Lease Payment (33 + Vehicles)	\$1,012,569
Defer Further Reduction of Admin Charges from Other Funds to General Fund	1,067,238
Transfer From Sanitation	1,500,000
Re-Appropriation of Health Insurance Savings	825,435
Non Vested Employee Fall Outs – Savings from Separated Employees	400,000
Position Freeze Savings	680,930
TOTAL	\$ 5,486,172

Challenge

Multi-Family & Commercial Sanitation Services

Multi Family utilizes CNG Vehicle. These vehicles travel to Pompano Beach (nearest recharge station).

7 Positions

Solid Waste (6), Fleet (1)

8 Vehicles

Replacement of 8 Vehicles for
MultiFamily/Commercial
Operations. Estimated (\$1.9M)



CNG Logistics

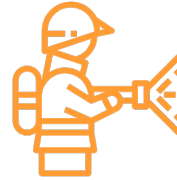
Nearest fueling station is in
Pompano Beach (+2 hour RT &
Half Tank + 1 hour to refuel),

Challenges



SANITATION 2.3M

Replace trucks and fill
vacant maintenance
positions



FIRE RESCUE STAFF 1.3M

Adding nine (9) more
positions to hold 3
personnel on an engine is an
estimated



FUNDING HUMAN SERVICES 970K

For FY 18/19, Human Services was
funded by Community Benefit Plan
Program (\$1.4M). This is a one time
revenue source and General Fund will
be required to fund account.



COMMUNITY PARTNERSHIP GRANTS 300K

Additional Requests to
increase funding for
outside agencies

Challenges



UNION NEGOTIATIONS

Negotiations with Unions has not started.; 2% is currently budgeted for Cost of Living Adjustments (COLA). Future COLA will be determined upon negotiations



INFLATION OF SUPPLIES

Ongoing trend of costs of goods increasing. The Consumer Price Index forecasts a 4% increase



HEALTH CARE BENEFITS

Health Insurance increases could take place at a range of 10-15% increase



PENSION CONTRIBUTIONS

Pension contribution costs may increase. Determined amount will be available soon after negotiations

CURRENT STATUS



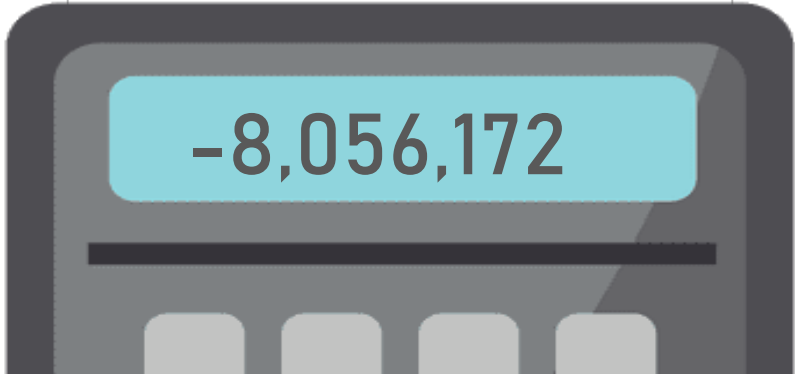
PROMPT ACTION REQUIRED

Staff is working to improve the values of the projected expenditures and reduce the operational costs to afford the additional expenditures that the City Commission has requested.

Various meetings have been addressing the need to reorganize processes and vet each position across the organization.



GENERAL FUND	\$72,296,698
ONE TIME REVENUE	- 5,486,172
FUNDING HUMAN SERVICES	- 970,000
3 RD PERSON ON RESCUE	- 1,300,000
COMMUNITY PARTNERSHIP GRANTS	- 300,000
GENERAL FUND EXPENDITURES IF MAINTAINED THE SAME	- 72,296,698



POTENTIAL SOLUTIONS

ACCOMMODATING COSTS AND A
BALANCED BUDGET

Potential Solutions



Right Size / Right Fit

Each Department will analyze their operations to see if the positions that are currently on the books are the “right fit/right size” for their operations. 10% reduction from all General Fund Operations, with the current vacancies – no layoffs



Mobility Projects

Reassess the mobility projects loan and coincide with the Community Redevelopment Agency (CRA) to help fund the projects that are located within the CRA



SAFER Grants

Apply for SAFER Grants to seed new Fire Rescue personnel. Grant helps Cities with deficiencies improve staffing levels for up to 3 years.



Request support for Community Grants

The City has been successful at securing grants for social benefits for the community. Staff is recommending to request from Broward County assistance in fulfilling certain social programs.

Budget Process Timeline

