



Hallandale Beach

DISASTER PREPAREDNESS



DISASTERS

Planned Events

Hurricanes / Tropical Storms

Large Gatherings / Horse Races / Concerts

Outbreaks (Ebola, Zika)

Un-Planned Events

Weather – Thunderstorms, Tornados, Flooding

Active Violence

Train or other Large Motor Vehicle Accident

Migrants Arriving Onshore



PLANNED EVENTS

Hurricane Season
Began June 1st,
Ends November 30th,





2017 PREDICTIONS

The National Oceanic and Atmospheric Administration (NOAA) forecast:

Expect warmer-than-average waters across the tropical Atlantic Ocean and Caribbean Sea, weaker-than-average wind shear and a weak or nonexistent El Nino

Predictions for 2017 Hurricane Season:

11 – 17 Named Storms

5 – 9 Hurricanes

2 – 4 Expected to be “major” with sustained winds of at least 111mph.

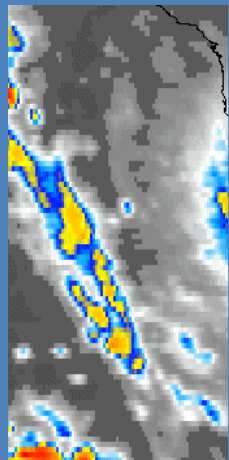
Saffir-Simpson Hurricane Wind Scale

The National Hurricane Center will no longer attribute storm surge with a hurricane category. This is due to previous storms that have had storm surges well outside of the expected criteria in the past few years. The non-tropical Nor'easter of '09 is a good example. Its wind gusts were up to 70mph, but Hampton Roads experienced flooding that was akin to a category 2 hurricane. Water rise will now be determined on a case by case situation.

Category	Winds (MPH)	Damage
1	74 - 95	Minimal: Significant damage to mobile homes. Many branches and small trees knocked down. Several large trees as well. Major roof damage to homes. Significant flooding is possible depending on track and speed. Moderate damage to home exteriors. Large area of power outages.
2	96 - 110	Extensive: Significant damage to mobile homes. Large trees blown down. Major roof damage to homes. Typically, significant flooding. Moderate damage to home exteriors. Large area of power outages.
3	111 - 129	Devastating: Now it is a major hurricane and structural damage can occur to homes and small buildings. Large buildings can also sustain damage. Mobile homes largely destroyed.
4	130 - 156	Catastrophic: Structural damage to numerous buildings. Roof failure on many buildings. Flooding and wind damage can extend far inland. Storm surge generally more than 13-feet will lead to widespread flooding, but height can vary.
5	More than 157	Catastrophic: All trees blown down. Some buildings removed from their foundation. Nearly total roof failure. Flood damage to lower floors less than 15-feet above sea level. Devastating wind damage can extend far inland, especially if system is quick moving.



Don't Be Fooled by Numbers



Hurricane Andrew
August 24, 1992
6:01 EDT
GOES-7 False Color
Infrared Image
HURRICANE ANDREW

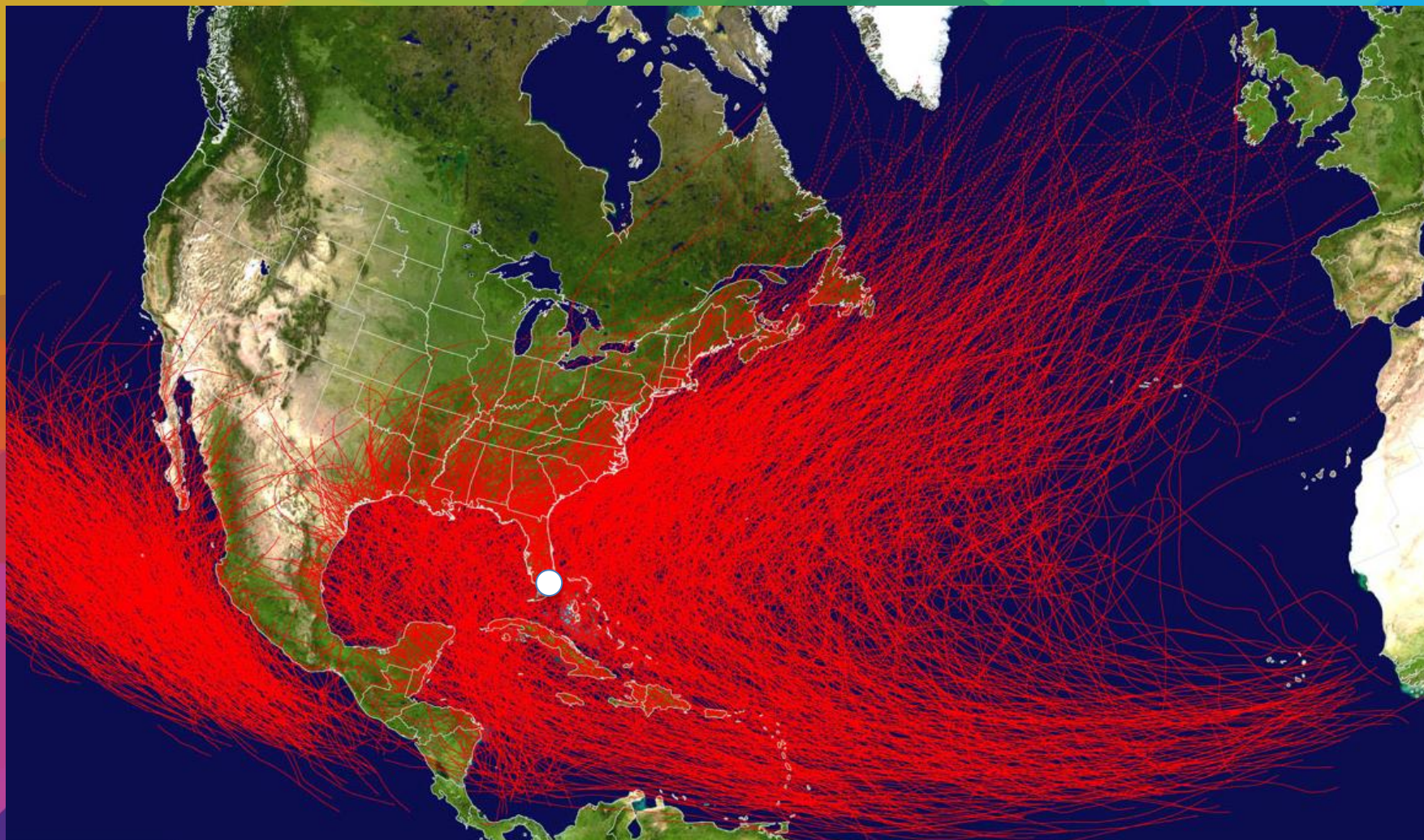


ON
IN
H



Tropical Cyclone History

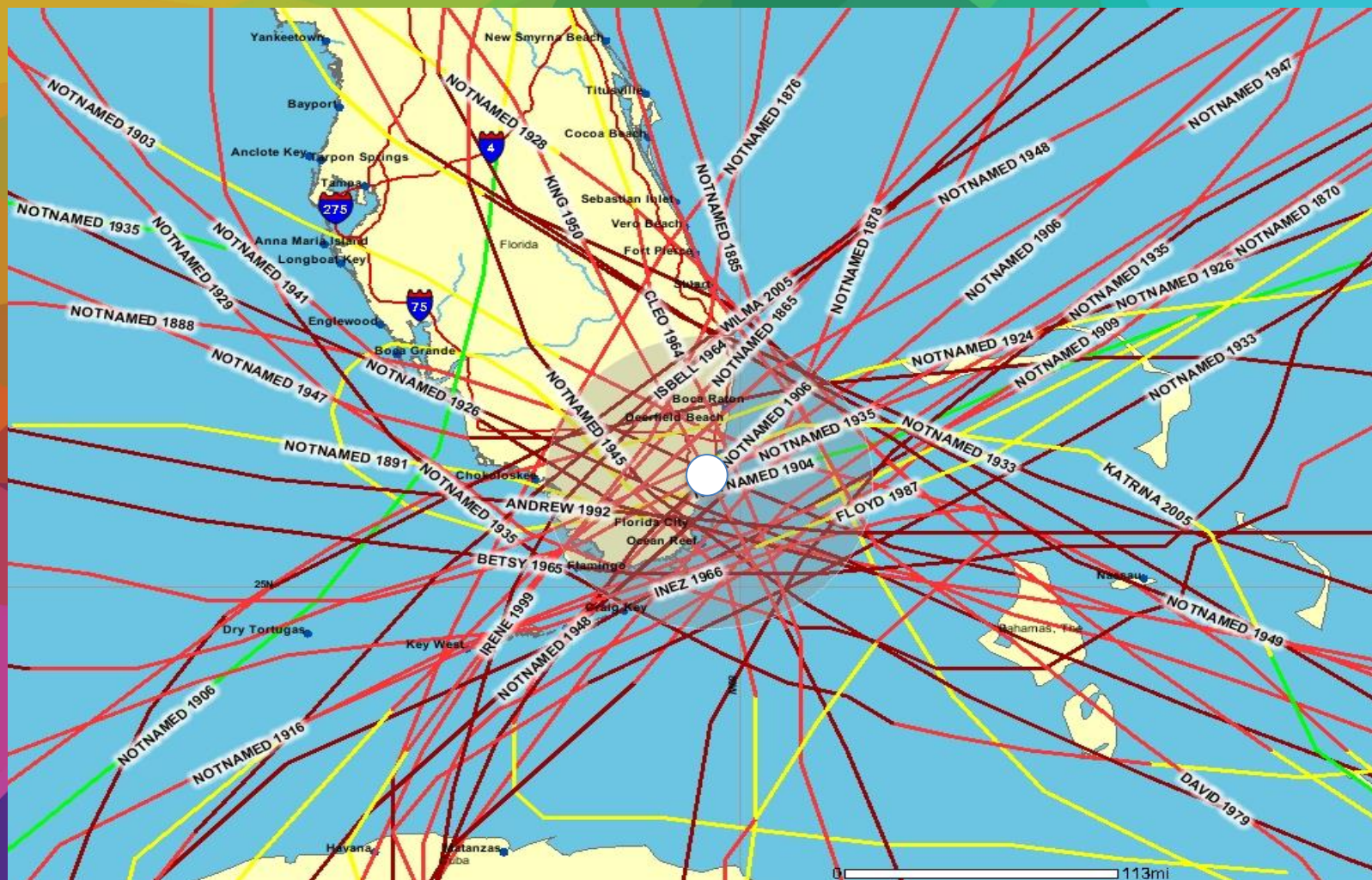
Since 1949 Pacific, 1851 Atlantic





South Florida

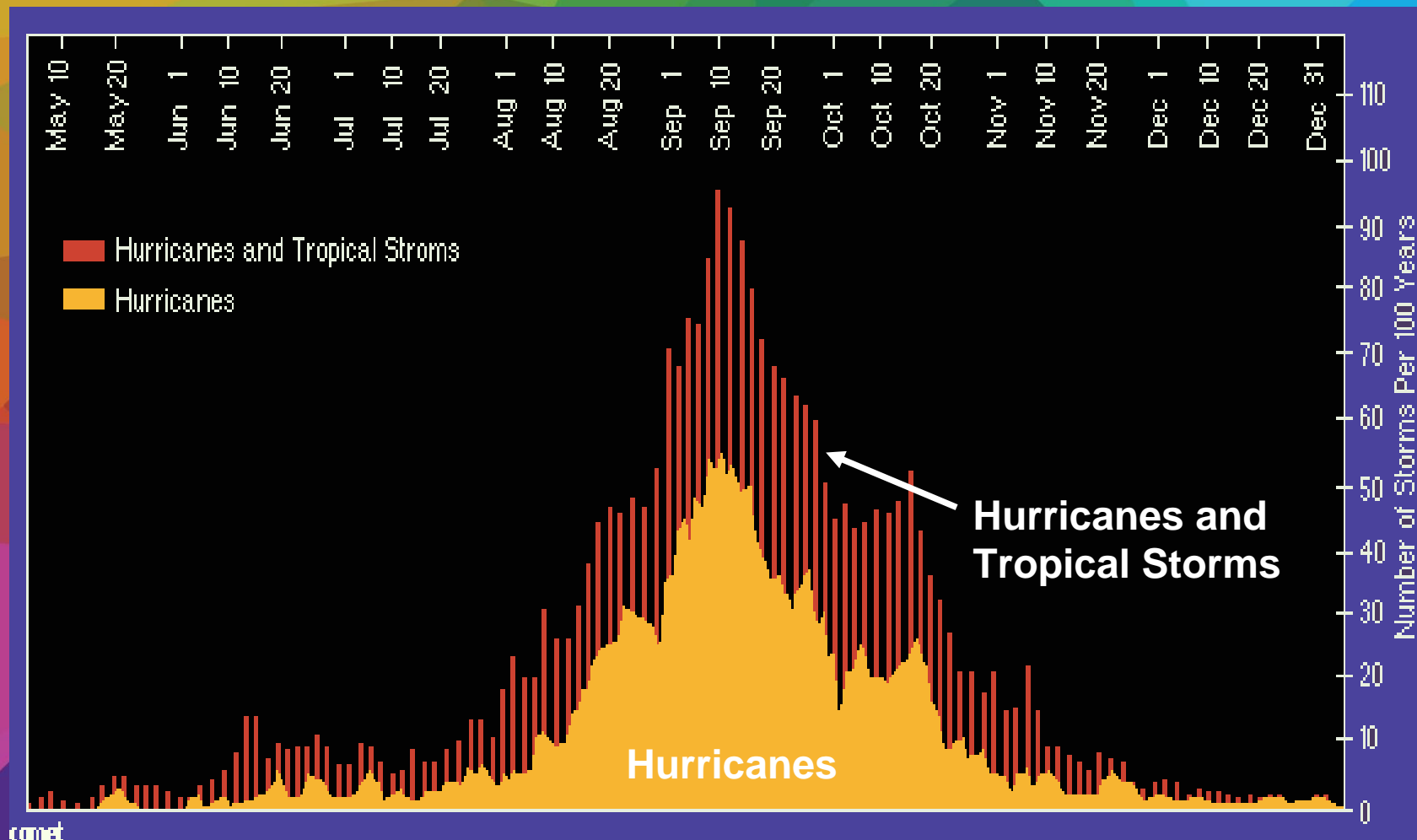
"Hurricane Alley"





Tropical Cyclone Climatology

Atlantic Activity Distribution





Comprehensive Emergency Operations Plan

The purpose of this plan is to provide an “all hazards” comprehensive emergency operations approach that seeks to respond to and mitigate the effects of a disaster.

To establish a recovery system in order to return the community to its normal state of affairs.



SCENARIO #1

Hurricane / Tropical Storm

5 days out – Planning Begins

Emergency Manager provides daily updates on the status of the storm.

Daily Briefings with City Manager and Directors.

Employees will review the CEOP & internal EM plans

HB EOC goes to Level III (Monitoring Status)

3 days out – Actions Begin
Daily briefings continue

Departments implement their operational plans

EOC at Level II (Partial activation)

Collabria Updated

Employees instructed to safeguard their homes.

1 day out – Final Preparations

HB EOC – moves toward Level I (Full Activation)

Evacuations underway

12 hours out – City begins to hunker down

Final preparations made

6 hours out – All non-essential personnel released.

HB EOC fully staffed

Staff to Broward EOC

Landfall / Arrival – All personnel in safe structures
All emergency responses suspended

Post Storm – Rapid Impact Assessment

EOC – Personnel Accountability

Fire & Police – Emergency Response Begins

EMS – Hospital Capabilities

DPW – Primary Road Clearance

Building Dept. – Structure Inspections

COMMUNICATIONS



COMMUNICATIONS

ReadyOp Search **7** Messages **Menu** **Logout** **Hallandale Beach (9)** **ReadyOp** Powered by
 Mark Ellis (Agency Administrator) - You are currently online © 2017 Cleartronic, Inc.

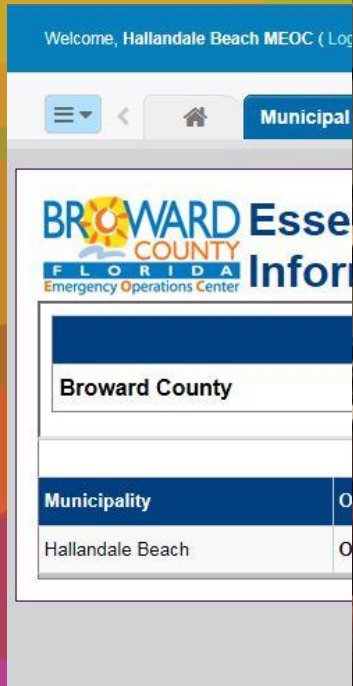
[Main Dashboard](#) [Files](#) [Roster](#) [CEOP Key Contacts List](#) [City's ICS Org Chart](#) [Dispatch](#) [Tracking](#) [Phone Logbook](#) [Forms \(RIA\)](#) [Capital Improvements](#) [City Manager's Office](#)
[City Clerk's Office](#) [City Attorney's Office](#) [Development Services](#) [Finance](#) [FIRE](#) [Human Resources](#) [Human Services](#) [Ocean Rescue](#) [Procurement](#) [Public Works](#) [Police](#)
[Parks and Recreation](#) [Wind Storm Cessation](#) [Flooding](#) [Hurricane/Tropical Storm Ops](#) [Employee Comfort Station](#) [Evacuation Plan](#) [Tabletop Exercise 2016](#) [Innovation Technology](#)

Hurricane Matthew Org Chart

Hurricane Matthew

10/06/2016

Incident Commander Operational Period #1 Mark Ellis	Liaison Operational Period #1 Nydia Rafols	Municipal Liaison Operational Period #1 Matt Kuhns		
Operations Section Operational Period #1 Gregg Pagliarulo	Logistics Section Operational Period #1 Bob Williams	Planning Section Operational Period #1 Jack Ryan	Finance Section Operational Period #1 Celeste Lucia	
Fire Branch Operational Period #1 Lori German	Service Branch Operational Period #1 Alfredo Gamon			
Police Branch Operational Period #1 Miguel Martinez				
Public Works Branch Mariana Pitiriciu				
Incident Commander Operational Period #2 Mark Ellis	Liaison Operational Period #2	Municipal Liaison Operational Period #2 Matt Kuhns		
Operations Section Operational Period #2 Dwayne Flournoy	Logistics Section Operational Period #2 Cathie Schanz	Planning Section Operational Period #2 Jack Ryan	Finance Section Operational Period #2 Celeste Lucia	
Fire Branch Operational Period #2 Tim Wiley	Service Branch Operational Period #2 Greg Chavarria			
Police Branch Operational Period #2 Stuart Shook				
Public Works Branch Operational Period #2 Steven Parkinson				



Allows us direct communication with our Municipal, County, State and Federal partners.

Dashboard


[EDIT MY DASHBOARD](#)

CodeRED News

Important Change to the Launcher App - Please note effective immediately the 'ECN Launcher' app will be known as 'CodeRED Launcher'. As you update your apps, it is important you recognize the new icon that will display (depicted below).

The app and its functionality have not changed – just the name. So please make a note of this change, alert your team members, and continue using the app to launch your critical communications across any mobile device, as you need!



Account Settings



Always Contact Members

There are currently 4 Members.

[VIEW MEMBERS](#)
[ADD NEW MEMBER](#)

Quick Statistics



Launch # 719066	6/9/2017 5:35:00 PM
Numbers Attempted:42	Connection Rate:92%
Launch # 719064	6/9/2017 5:30:25 PM
Numbers Attempted:56	Connection Rate:92%
Launch # 718845	6/9/2017 2:53:32 PM
Numbers Attempted:42	Connection Rate:97%
Launch # 718842	6/9/2017 2:49:26 PM
Numbers Attempted:56	Connection Rate:98%
Launch # 717906	6/8/2017 5:55:14 PM
Numbers Attempted:126	Connection Rate:95%

Quick Launch



Select an existing scenario and press 'LAUNCH' to start the launch process:

[LAUNCH](#)

OR

Press 'BUILD' to construct a scenario

[BUILD](#)

Last Launch





Helpful Links

News Flash

E-mail Notifications / Notify Me

Hallandale Beach Happenings

Parks Master Plan

Contact Us



Job Openings



Online Payments

Home Page > Notify Me



Notify Me

Available Lists

1. Type your email address in the box and select **Sign In**.
2. If you want to receive text messages enter your phone number and select **Save**.
3. To subscribe or unsubscribe click  and/or  next to the lists to which you wish to subscribe/unsubscribe.









Please sign in to subscribe, unsubscribe, or manage your subscriptions

Email Address

Sign In



Notify Me

METHOD	LIST NAME	DESCRIPTION
 	After School Programs	Sign up for this list for information about After School Programs, registration, and events. Emails will be sent periodically. View Previous Messages
 	Board & Committee Meetings	Receive notification on the City's various Board and Committee Meetings. (ex. Planning and Zoning, Beautification, Code Enforcement information, and more). View Previous Messages
 	Commission Agendas	Sign up to receive notification that a new agenda has been posted and announcements of public meetings. View Previous Messages
 	Community Redevelopment Agency Announcements	Sign up for this list to be notified of Community Redevelopment Agency events. Event notifications will be sent approximately once per month. View Previous Messages





Hallandale Beach
PROGRESS. INNOVATION. OPPORTUNITY.



Government



Services



Projects



Attractions



How Do I...



[Home Page](#) › [Government](#) › [Fire Rescue](#) › [Services](#) › [Emergency Management](#)

Community Programs

Emergency Management

HEAVY RAIN UPDATE

UPDATE 6/7/2017 2:00 PM

Continued rain should be expected today with occasional gusty winds and the possibility of tornadoes throughout the day and tonight. Yesterday's radar images showed the storm tracking mostly north of Hallandale Beach. Today's track moved further south this morning and the current storm line places Hallandale Beach in its path. The band on the northwest corner of the map is coming across the state this afternoon. This means an increased chance of rain and urban flooding. All residents and visitors should take caution when driving on the roadways and be aware of their surroundings.



[Job Openings](#)



[Online Payments](#)

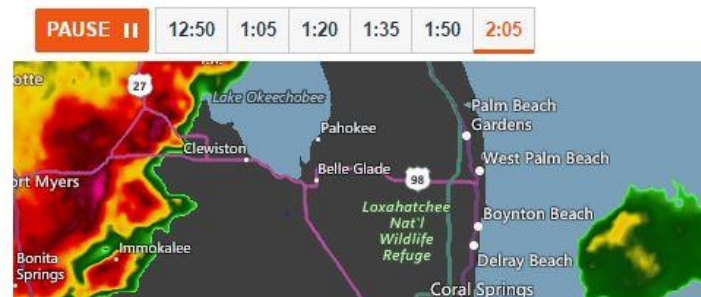


[Building Permits](#)



[Submit a Request](#)

Hallandale Beach Radar





Who's in Charge?

- In time of emergency or disaster, the City Manager, shall assume full temporary direction of all municipal operations.
(ref: Code of Ordinances)
- The Emergency Manager is designated by the City Manager. Currently, this position is assigned to the Fire Chief. (ref: CEOP)

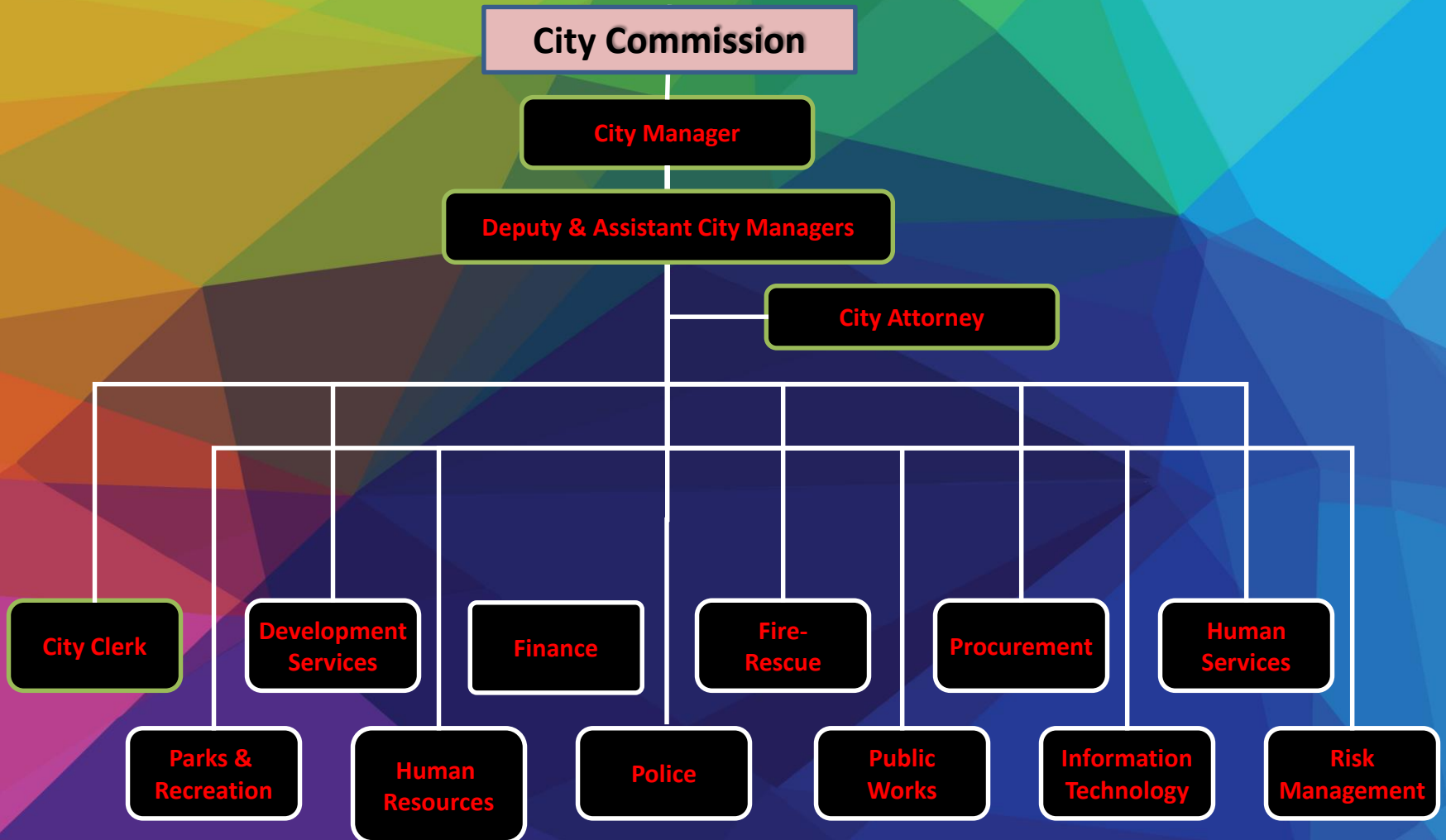


EMERGENCY MANAGER

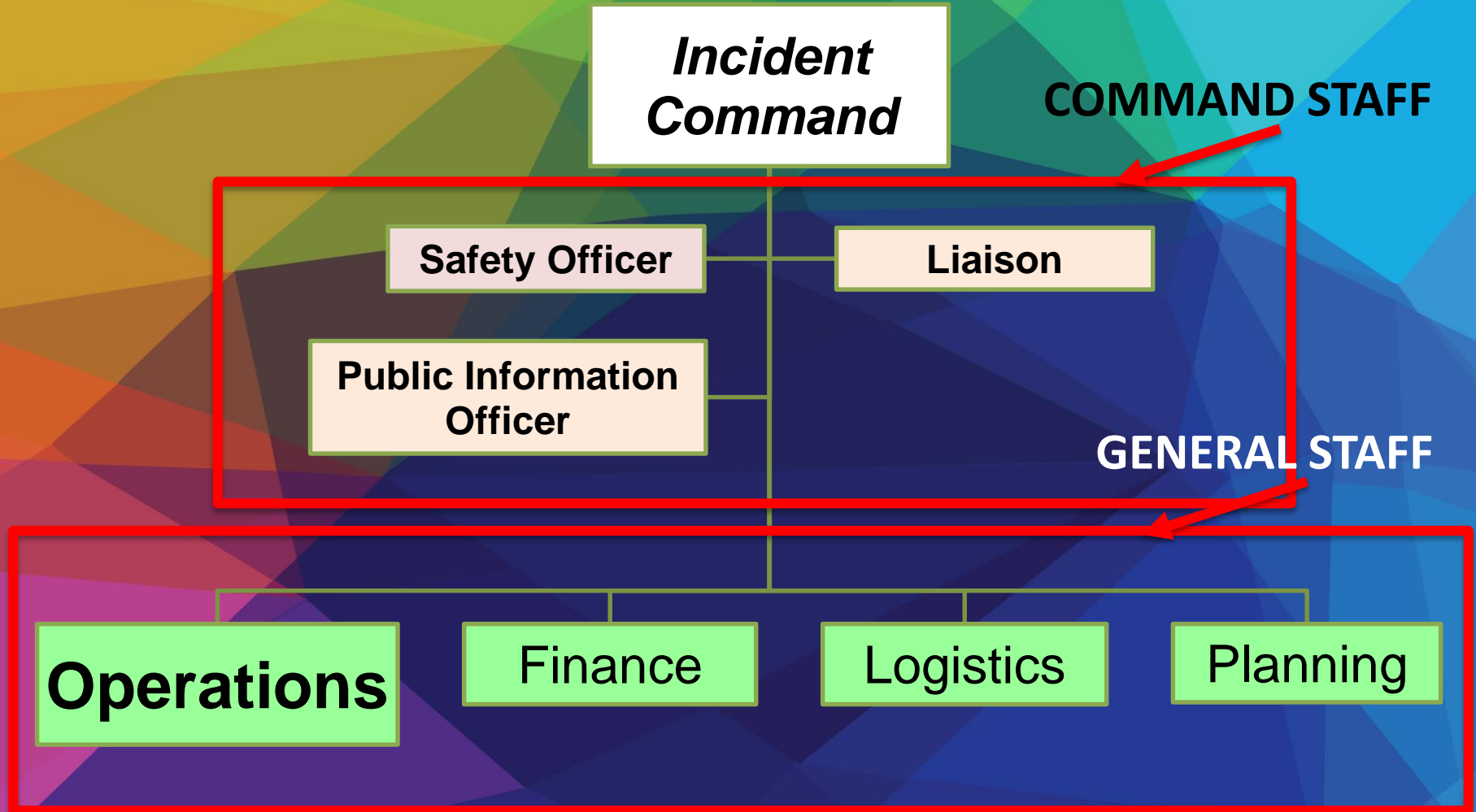
- The **Emergency Manager's** main responsibilities:
 - Manage all emergency preparedness, mitigation, response and recovery efforts
 - Coordination throughout the City
 - Act as the Director of the Emergency Operations Center when activated.

City Organizational Chart

Normal Operations



Standard Incident Command Structure



COMMAND

We typically use a Unified Command approach.

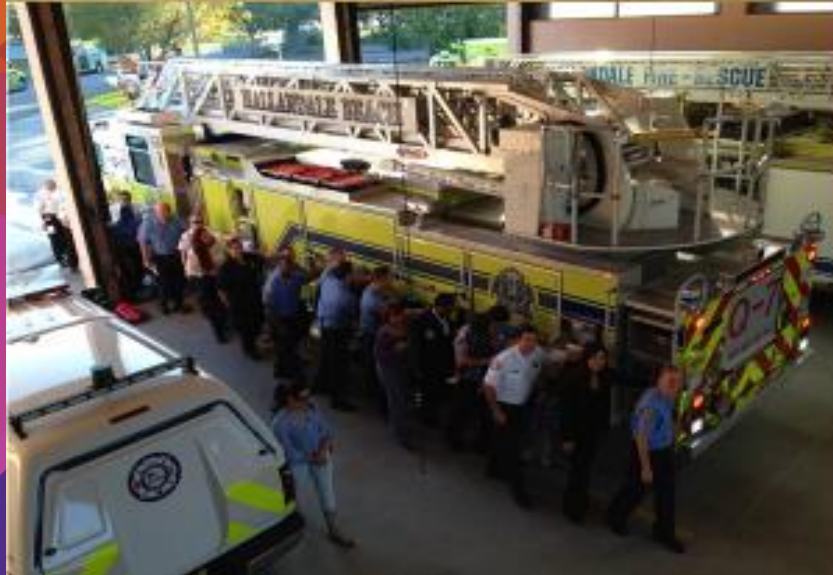
- **Unified Command**, multiple Departments in charge of the incident

Practice, Practice, Practice



Hallandale Beach: Annual Functional Exercise

Friday, June 26, 2015



Hallandale Beach
PROGRESS. INNOVATION. OPPORTUNITY.





SCENARIOS

Planned:

Large Gatherings / Horse Races / Concerts
Outbreaks (Ebola, Zika)

UnPlanned:

Weather – Thunderstorms, Tornadoes, Flooding
Active Violence
Train Accidents & Large Motor Vehicles
Migrants Arriving Onshore



COMMUNICATIONS

Creating a new Emergency Notification Plan.

Creating a new internal “Warning Point”

- **Single point of contact for everyone**
- **Rapid dissemination of information**



