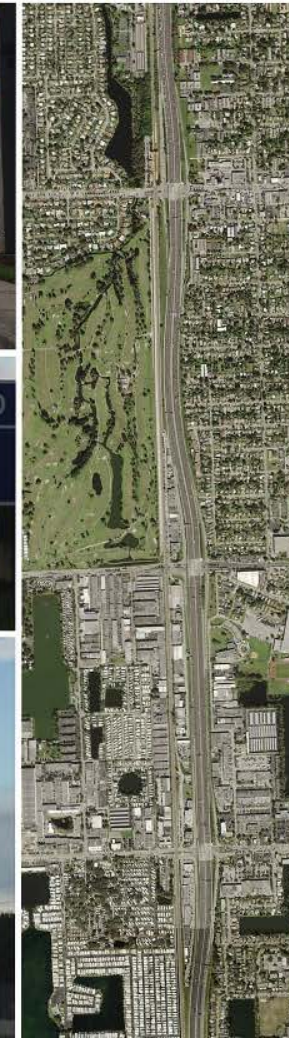




## PROJECT DEVELOPMENT & ENVIRONMENT (PD&E) STUDY

Interstate 95 (I-95/SR 9) • From South of Hallandale Beach Boulevard (SR 858) to North of Hollywood Boulevard (SR 820)  
Broward County, FL • FPID No.: 436903-I-22-02 • ETDM No.: 14254

# WELCOME





- ❑ Share information with the public
- ❑ Serves as an official forum
  - ✓ Review maps, drawings, and other information
  - ✓ Join the PD&E Study mailing list
  - ✓ Receive comments to become part of the project's public record



## TRANSPORTATION DEVELOPMENT PROCESS

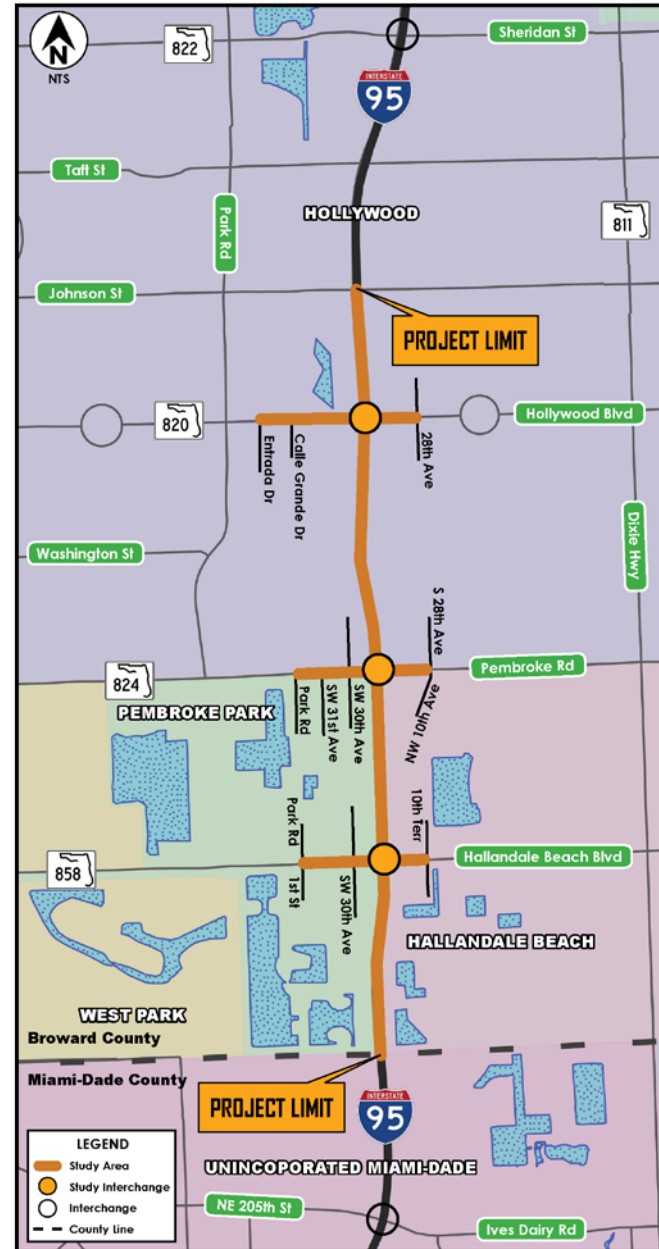


## PHASE 2

### PHASE 2 PD&E Study

- ❑ Formal FDOT process to ensure that consideration is given to environmental impacts, social impacts, public input, engineering design and project costs
- ❑ Required to satisfy the National Environmental Policy Act
- ❑ A prerequisite for receiving approval from the Federal Highway Administration, an essential step in qualifying for federal funds to implement the proposed improvements
- ❑ Involves engineering analysis and environmental evaluation, all accomplished within the context of a public participation program
- ❑ Includes data collection, traffic forecasts, alternatives development, engineering analyses, environmental analyses and documentation
- ❑ Involves the preparation of preliminary engineering and environmental documentation

- ✓ Hallandale Beach
- ✓ Pembroke Park
- ✓ Hollywood

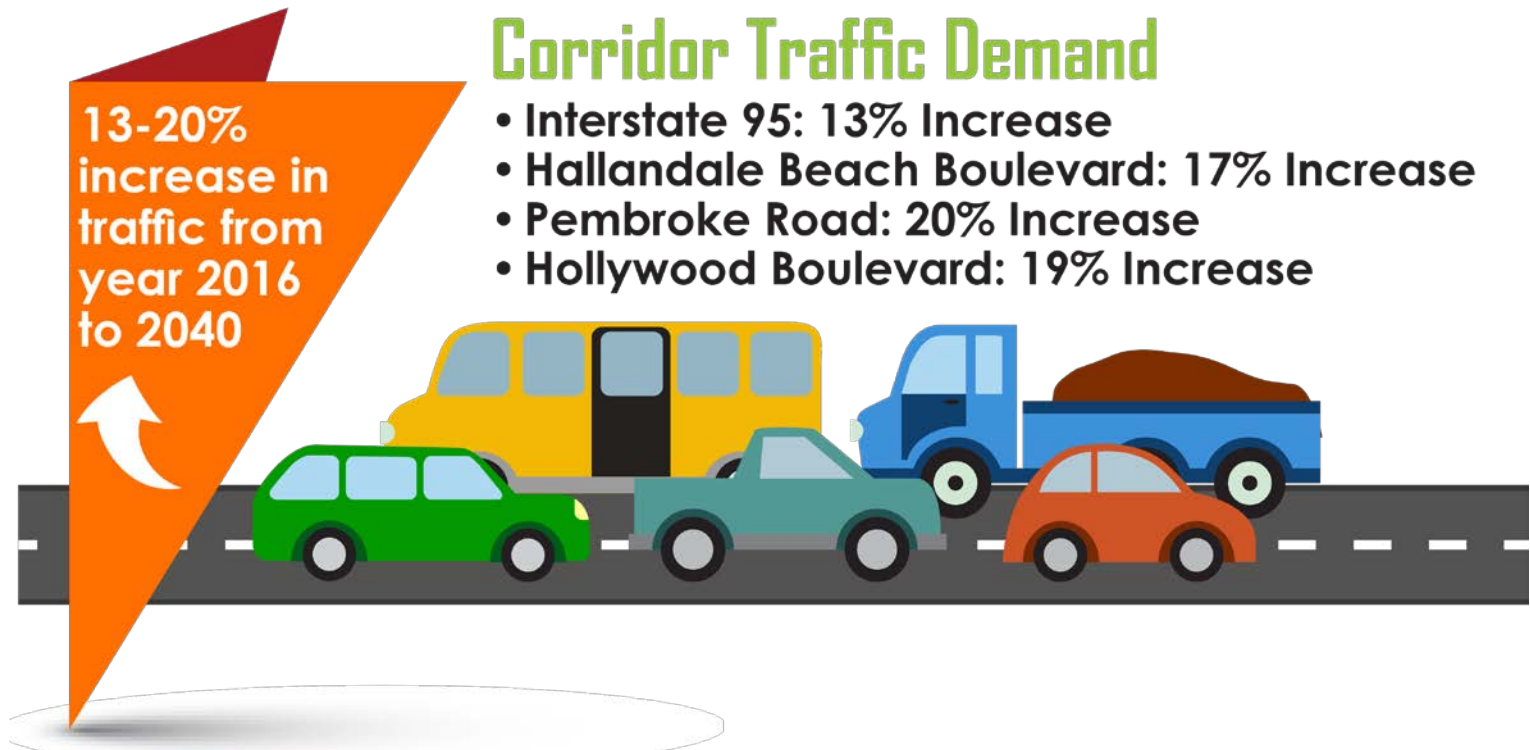


- 
- The map displays the study area for the I-95 Interchange Study. The study area is highlighted in orange, running along I-95 from the Hollywood interchange to the Hallandale Beach interchange. The study interchange is marked with an orange circle at the Hollywood interchange. The map includes major roads such as I-95, SR 822, SR 820, SR 824, SR 858, and SR 811. It also shows local streets like Taft St, Johnson St, Hollywood Blvd, Washington St, 28th Ave, 30th Ave, 31st Ave, 1st St, NE 205th St, and Ives Dairy Rd. The map is divided into Broward County, Miami-Dade County, and Unincorporated Miami-Dade. A legend indicates the study area (orange line), study interchange (orange circle), interchange (white circle), and county line (dashed line).

## □ Purpose

The primary need for this project is to increase capacity at the interchanges and at adjacent intersections along Hallandale Beach Boulevard, Pembroke Road and Hollywood Boulevard. Secondary considerations for the purpose and need of this project include: traffic demand, safety, transit operations, travel time reliability, population growth, modal interrelationships, emergency evacuation, and long-term mobility.

## □ Needs





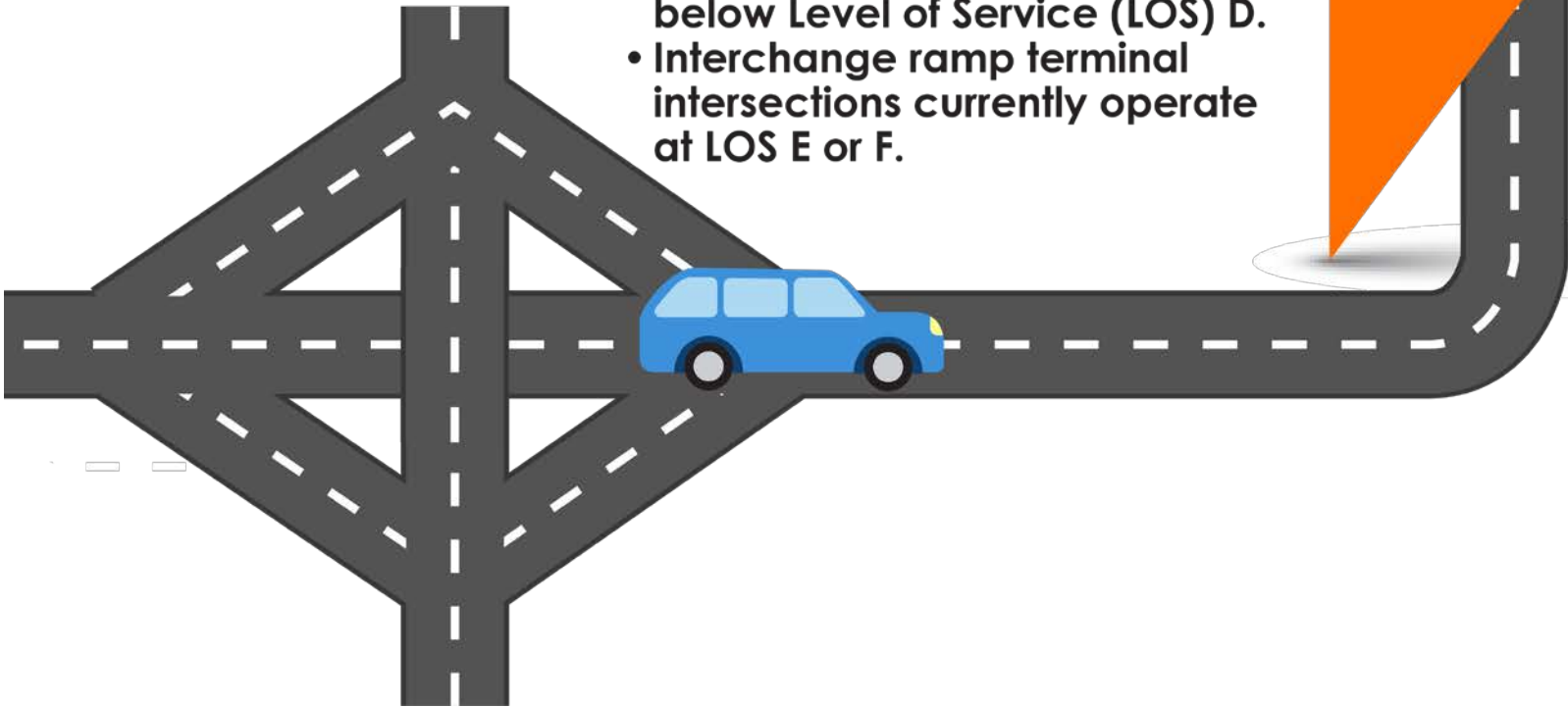
- ❑ Study area has experienced greater overall number of crashes than what would typically be anticipated on similar facilities.



## Interchange Capacity Needs

- I-95 freeway segments between interchanges currently operate below Level of Service (LOS) D.
- Interchange ramp terminal intersections currently operate at LOS E or F.

Additional capacity is needed now





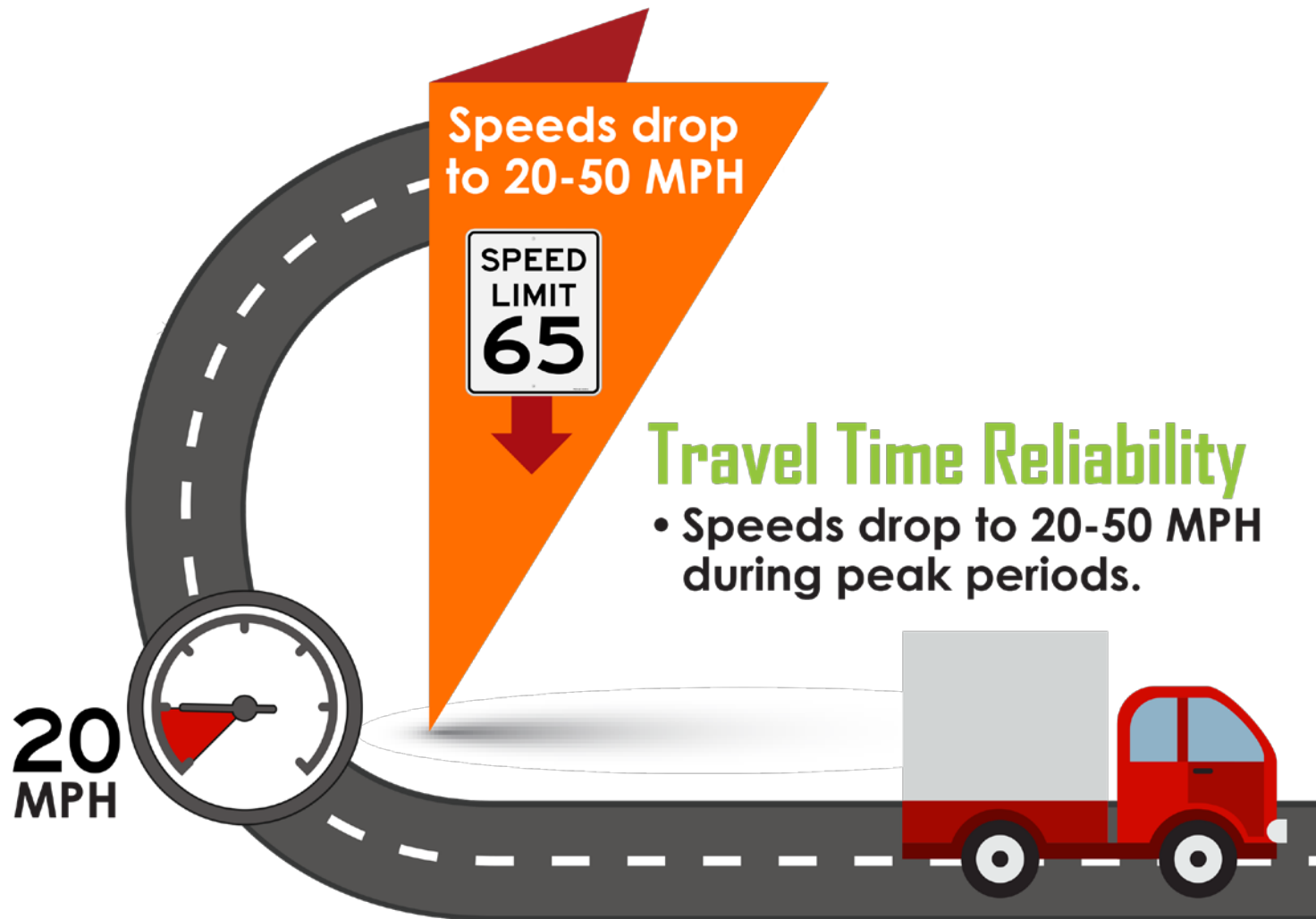
Impacting  
transit  
operations



## Transit Operations

- Existing congestion impacts transit operations.
- Additional capacity provides opportunities for transit expansions.







## Model Interrelationships

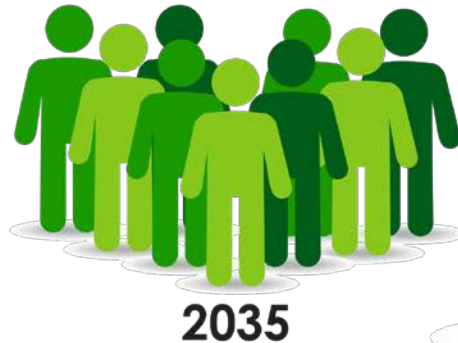
- Capacity improvements within the study area will enhance the mobility of people and goods by alleviating current and future congestion at the interchanges and on the surrounding freight and transit networks.
- Reduced congestion will serve to maintain and improve viable access to the major transportation facilities and businesses of the area.

Improve park and ride lot, transit routes, and Tri-Rail operations



## Population Growth

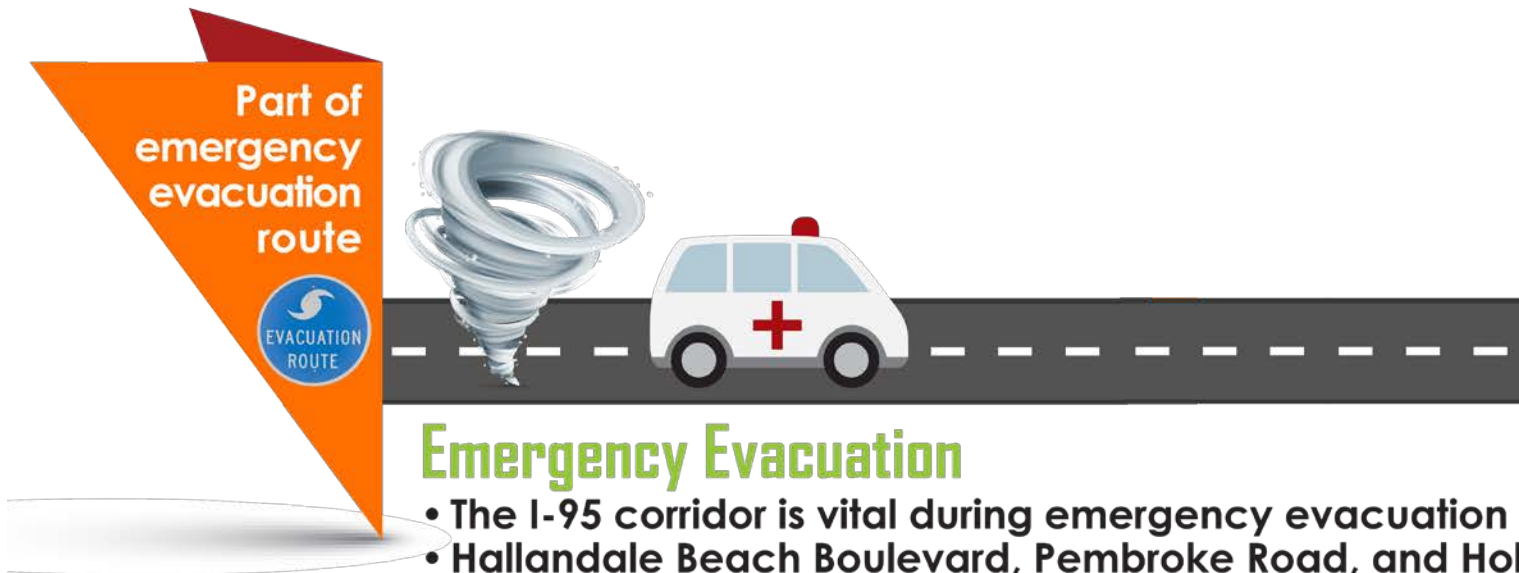
- Broward County population will increase by 29% between 2005 and 2035.
- Broward County employment will grow by 37%.



Increase in  
population  
will result in  
increased  
traffic







## Emergency Evacuation

- The I-95 corridor is vital during emergency evacuation periods.
- Hallandale Beach Boulevard, Pembroke Road, and Hollywood Boulevard are also part of the emergency evacuation routes network.

## Long-Term Mobility

- Residents and workers in the area will face severe congestion impacting their economic viability and quality of life.
- Congestion will lead to increase in accidents.




Severe  
congestion  
impacts the  
economy  
of the  
cities



- [illegible]

# PD&E Study Milestone Schedule

PROJECT MILESTONES	2016		2017				2018				2019	
	Jul Aug Sep	Oct Nov Dec	Jan Feb Mar	Apr May Jun	Jul Aug Sep	Oct Nov Dec	Jan Feb Mar	Apr May Jun	Jul Aug Sep	Oct Nov Dec	Jan Feb Mar	Apr May Jun
Begin Study	◆											
Data Collection												
Public Kick-off Meeting 				◆								
Engineering and Environmental Analyses												
Alternatives Public Workshop								◆				
Draft Documentation												
Public Hearing										◆		
Final Documentation												
Location and Design Concept Acceptance (Study Completed)												◆
Public Involvement												

*Schedule Subject to Change*



**Kenzot Jasmin**

Project Manager  
Florida Department of Transportation  
District Four  
Consultant Management

(954) 777-4462

[Kenzot.Jasmin@dot.state.fl.us](mailto:Kenzot.Jasmin@dot.state.fl.us)





## PROJECT DEVELOPMENT & ENVIRONMENT (PD&E) STUDY

Interstate 95 (I-95/SR 9) • From South of Hallandale Beach Boulevard (SR 858) to North of Hollywood Boulevard (SR 820)  
Broward County, FL • FPID No.: 436903-I-22-02 • ETDM No.: 14254

# THANK YOU!

