

City of Hallandale Beach Resilience Dialogues

Sue Fassler, Green Initiatives Coordinator



Hallandale Beach
PROGRESS. INNOVATION. OPPORTUNITY.



Resilience Dialogues



The Resilience Dialogues partners with communities to explore their risks from climate variability and change

re-sil-i-ence /rəˈzilyəns/ *n.* The capacity of individuals, communities and systems to anticipate, prepare for, and adapt to changing conditions, recover from threats, and thrive in the future.

di-a-logue /ˈdīəˌlæɡ, ˈdīəˌlôɡ/ *n.* The respectful integration of ideas to enable effective action.

Professionally facilitated

Online process

Connects community leaders to a network of vetted national experts

Identifies relevant tools, information and assistance programs

Resilience Dialogues Not Meant To

- Make decisions for communities
- Conduct a full climate assessment or resilience planning effort
- Replace professional consultants hired to develop in-depth climate resilience plans



Resilience Dialogues co-managed by:

- U.S. Global Change Research Program
- American Geophysical Union's Thriving Earth Exchange



U.S. Global Change
Research Program

THRIVING EARTH
EXCHANGE
Powered by AGU

10 Communities throughout the U.S. were selected to participate in the 2017 RDs

Hallandale Beach matched with a facilitator and subject matter experts (SMEs)

Community Leaders

- Sue Fassler, *Green Initiatives Coordinator*
- Mary Francis Jeannot, *Special Projects Coordinator*
- Keven Klopp, *Director of Development Services*
- Mark Ellis, *Fire Chief*
- Thomas Schattie, *Branch Manager, Florida Community Bank*

SMEs volunteered their time:

- Southeast Florida Regional Climate Change Compact
- Broward County
- The Nature Conservancy
- Sightful
- L & R Resources
- Mitigat
- USGS
- NOAA
- EPA

Dialogue Participants

Community Leaders

Sue Fassler (Team Lead)
Green Initiatives Coordinator
City of Hallandale Beach
sfassler@cohb.org

Mark Ellis
Fire Chief
City of Hallandale Beach
mellis@cohb.org

Mary Francis Jeannot
Special Projects Coordinator
City of Hallandale Beach
mjeannot@cohb.org

Keven Klopp
Director of Development
Services
City of Hallandale Beach
kklopp@cohb.org

Tom Schattie
Board Member, Chamber
of Commerce
Branch Manager, Florida
Community Bank
City of Hallandale Beach
tschattie@fcb1923.com

Subject Matter Experts

Ricardo Alvarez
President/Director
Mitigat.com
ricardoalfonso@mitigat.com

Miguel Ascarrunz
Director
Broward County
Emergency Management
mascarrunz@broward.org

Chris Bergh
Southeast Florida
Director of Conservation
The Nature Conservancy
lnarvaez@broward.org

Schuyler Brown
Communications Advisor/
Founding Partner, Sightful
Schuyler.brown@besightful.com

Soupy Dalyander
Research Oceanographer
USGS
sdalyander@usgs.gov

Samantha Danchuk
Assistant Coordinator
Environmental Planning &
Community Resilience Division
Broward County
sdanchuk@broward.org

Jia Li
Economist
Climate Change Division
US EPA
li.jia@epa.gov

Keely Maxwell
General Anthropologist
US EPA
Maxwell.keely@epa.gov

Ellen Mecray
Regional Climate
Services Director
NOAA (East Coast Region)
Ellen.L.mecray@noaa.gov

Johana Narvaez
Engineer II, Surface Water
Management
Broward County
jnarvaez@broward.org

Roderick Scott
Flood Hazard Mitigation
Specialist/President
L & R Resources, LLC
Roderick.scott75@aol.com


Regional Network

Nancy Schneider
Southeast Florida Regional
Climate Compact and
Senior Program Officer
Institute for Sustainable
Communities
nschneider@iscvt.org

Dialogue Facilitator

Anna Marandi
Program Officer
Urban Solutions
Institute for Sustainable
Communities
amarandi@iscvt.org



Hallandale Beach Connecting Dialogue


Open > Completed Unsubscribe


What are the most relevant and useful climate and resilience resources for Hallandale Beach?


Thanks to everyone for their participation in the Resilience Dialogues these past few weeks. The discussion was rich with expert insight from both our community leaders and our SMEs. Together, we have pondered possible champions, allies, and other assets within the community, as well as external tools, data, case studies, success stories to boost everyone's base knowledge of resilience-related issues. It is our hope that Hallandale will emerge from these dialogues inspired, energized, and with a clearer understanding of where to begin their resiliency planning efforts. Today is the last day of our Connecting Dialogues, so please feel free to join the conversation with any additional ideas, thoughts, or resources you may want to contribute. Thanks again.


[Read more ...](#)


Participants


Mark Ellis


Susan Fassler


Mary-Francis Jeannot


Keven Klopp


Thomas Schattie


Ricardo Alvarez


Miguel Ascarrunz

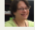
Chris Bergh


Schuyler Brown


Samantha Danchuk


Soupy Dalyander

Jia Li


Keely Maxwell

Ellen Mecray

Johana Narvaez

Roderick Scott

Facilitator

Anna Marandi

Resources

Discussion




Specialized online platform

Anna Marandi, Facilitator, Institute for Sustainable Communities

Two separate 1-week online, asynchronous sessions

7 Contributions

Contribution name / Author(s)



The kitchen sink / ISCAAnna

✓ 0

👍 0

💬 11

Please add any other resources, tools, ideas that perhaps don't fit under any other category. Share away!

Advancing resilience efforts - nitty gritty details / ISCAAnna

✓ 0

👍 0

💬 6

Interdepartmental communication, cross-sector collaboration, stakeholder engagement and other challenging (but exciting!) concepts

The SE Florida Regional Climate Change Compact's Resources and More / ISCAAnna

✓ 0

👍 0

💬 8

The Compact has created many resources for the SE FL region. The website alone is chock full of useful data and documents for download.

Assets to leverage (funding, social networks, human capital) / ISCAAnna

✓ 0

👍 0

💬 18

What are key assets Hallandale can leverage to energize the community and advance resilience planning efforts?

Case Studies / ISCAAnna

✓ 0

👍 1

💬 9

Let's compile case studies and success stories from across the region and elsewhere

Risks and Benefits / ISCAAnna

✓ 0

👍 0

💬 13

Can addressing climate risks and implementing adaptation strategies benefit the community in other ways as well?

Adaptation 101 - Tools and resources to begin resiliency planning / ISCAAnna

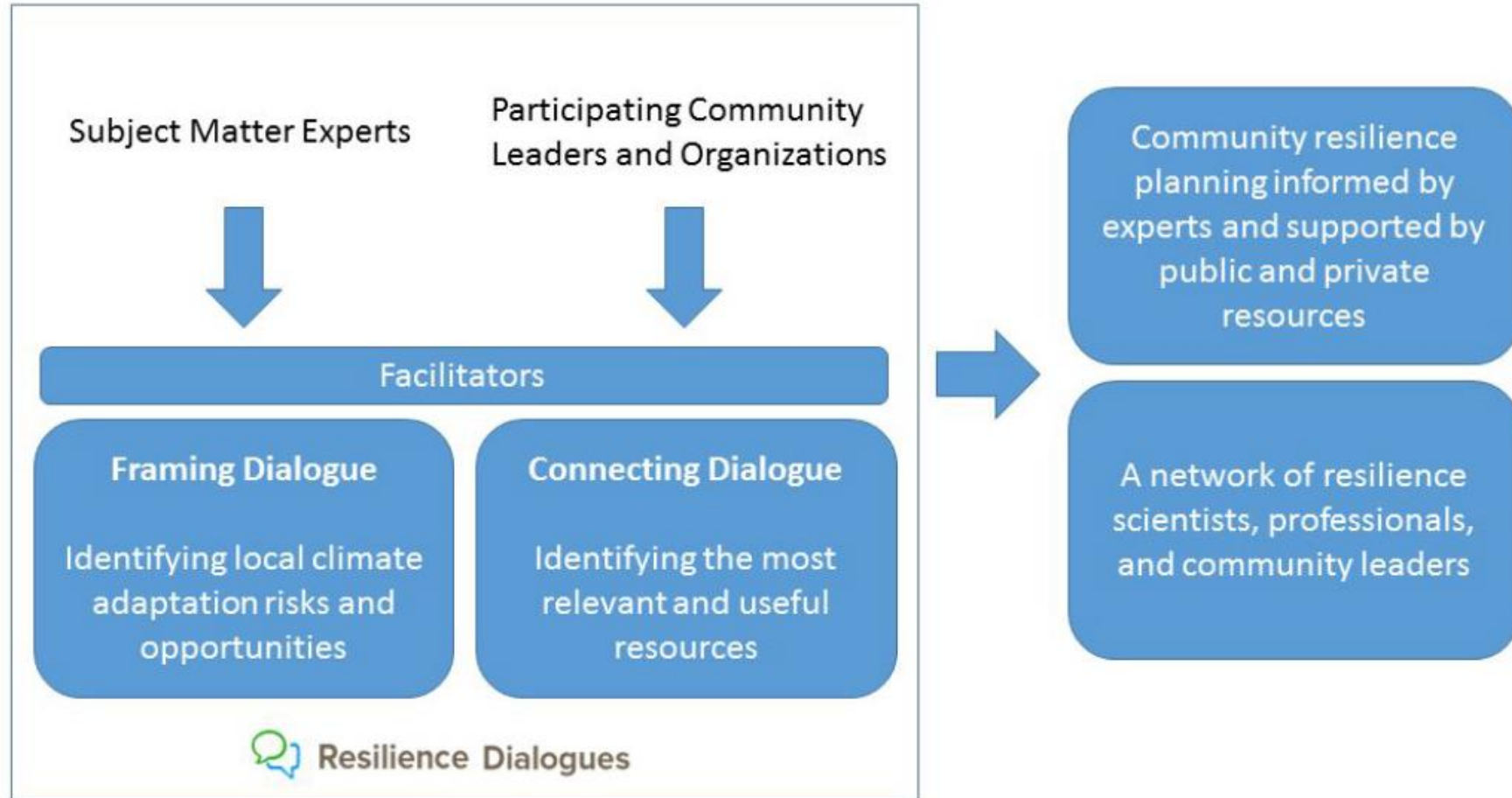
✓ 0

👍 0

💬 22

What are the best tools and resources available to help Hallandale begin building a resilience plan? Whats the best place to start?

Hallandale Beach leaders developed a list of questions in advance of the RDs to serve as a starting point



Questions focused on 5 areas

Sea-Level Rise: Impacts, Vulnerabilities, Asset Protection, and Emergency Planning

Communicating Risk: Stakeholder Engagement, Public Outreach and Education

Financing Climate Adaptation and the Economic Costs and Benefits

Social Impacts: Displacement, Vulnerable Populations

Barriers to Adaptation

Example Questions

What mapping and visualization tools will best help the City identify hazards, risks and vulnerabilities as it begins its resiliency planning? Which available decision support tools would be most useful for Hallandale Beach?

Are there best practices or innovative methods for communicating with residents and stakeholders who may be skeptical or do not have basic knowledge of climate science?

What are the costs and benefits of early adaptation? What steps can Hallandale Beach take to begin applying a resilience lens to all future budgetary decisions?

Are there financial mechanisms that can ensure the costs of maintaining services in flood-prone regions are borne by those who choose to live there and not subsidized by other residents? Are there policy mechanisms that can encourage the development of affordable housing options in higher elevations, particularly as construction and development increase inland?

How can the City overcome Florida's regulatory barriers that prevent local governments from enacting pro-resilience or pro-sustainability initiatives?

Selected Findings

Examine FEMA flood maps – pinpoint lowest elevation and older construction

Assess and map out the City's ability to make changes in zoning requirements, nourish beaches, restore natural habitats, and elevate or harden some building structures

Crowdsource community input on the assets they feel are the most valuable - avoid conflict during planning stages

Identify the City's trusted messengers, such as industry leaders, local celebrities, or spiritual leaders

Address the emotional aspects of climate change (fear, anxiety and remorse)

Adaptation and flood hazard mitigation in coastal Louisiana has shown a savings of \$4 of disaster recovery costs for every \$1 spent on elevation or flood proofing

County is working on a series of future flood condition maps for groundwater to help engineers plan ahead

Adaptation and resilience planning must avoid entrenching socioeconomic inequities

City's Development Services and Human Services Departments can begin thinking about how to advocate for affordable housing in communities – build or retrofit for FEMA map requirements

Resource Compilation

Visualizing and Planning for Sea Level Rise

Implementation Tools and Resources for Local Governments

Adaptation Clearinghouses, Networks, Case Studies

Resources for Climate Change Communication

Resources for Educating City Staff

Adopting a Whole Community, Equitable Approach

Regional Resilience – Connecting to Compact and County

Economics of Climate Change/Financing Adaptation

Grants

Next Steps

Climate adaptation education and training for staff

Climate adaptation education for the public and other stakeholders

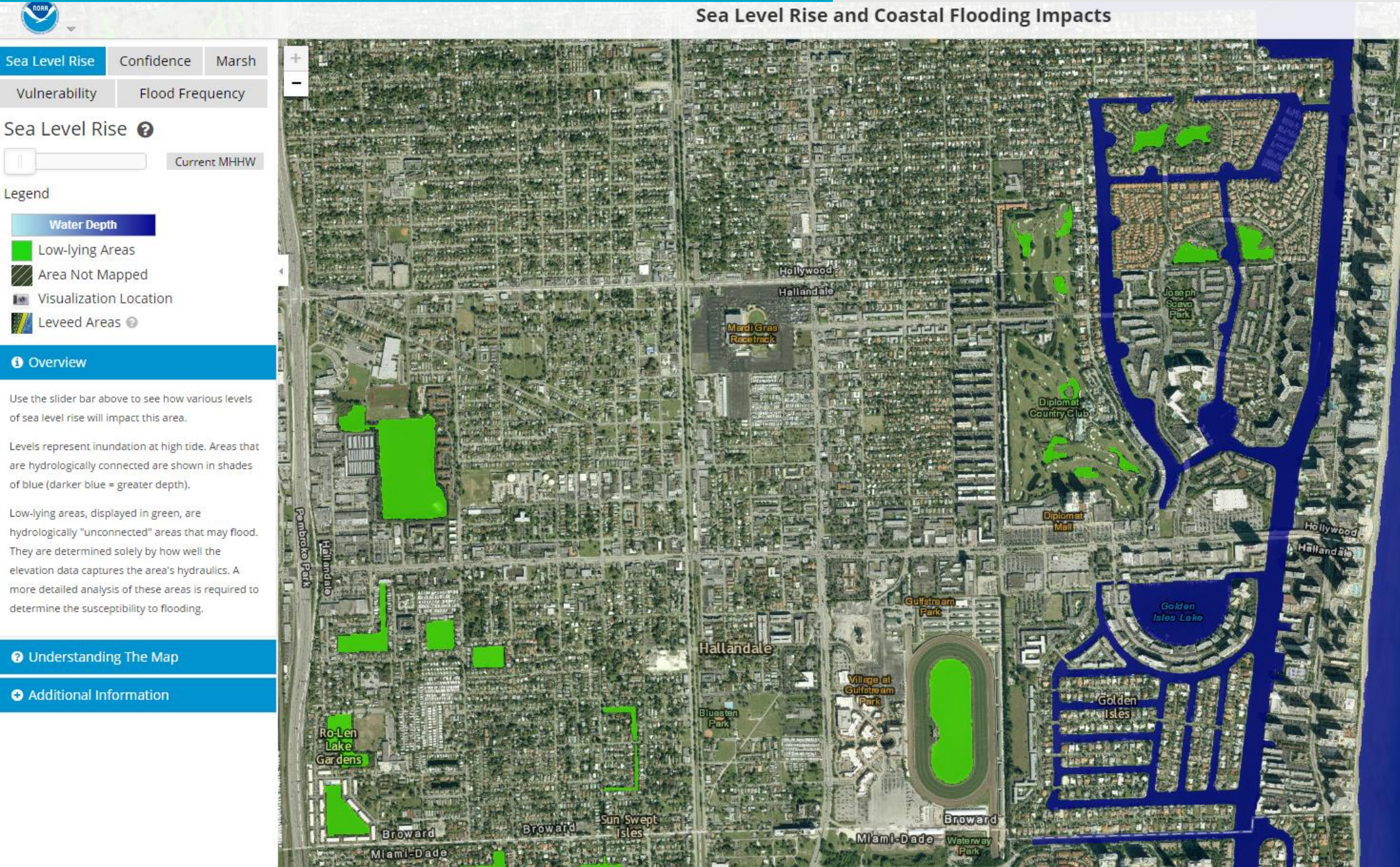
Connect with County, Compact and other local communities to explore grant opportunities, resilience strategies are aligned and best practices are communicated

ID local champions and create an advisory board/task force

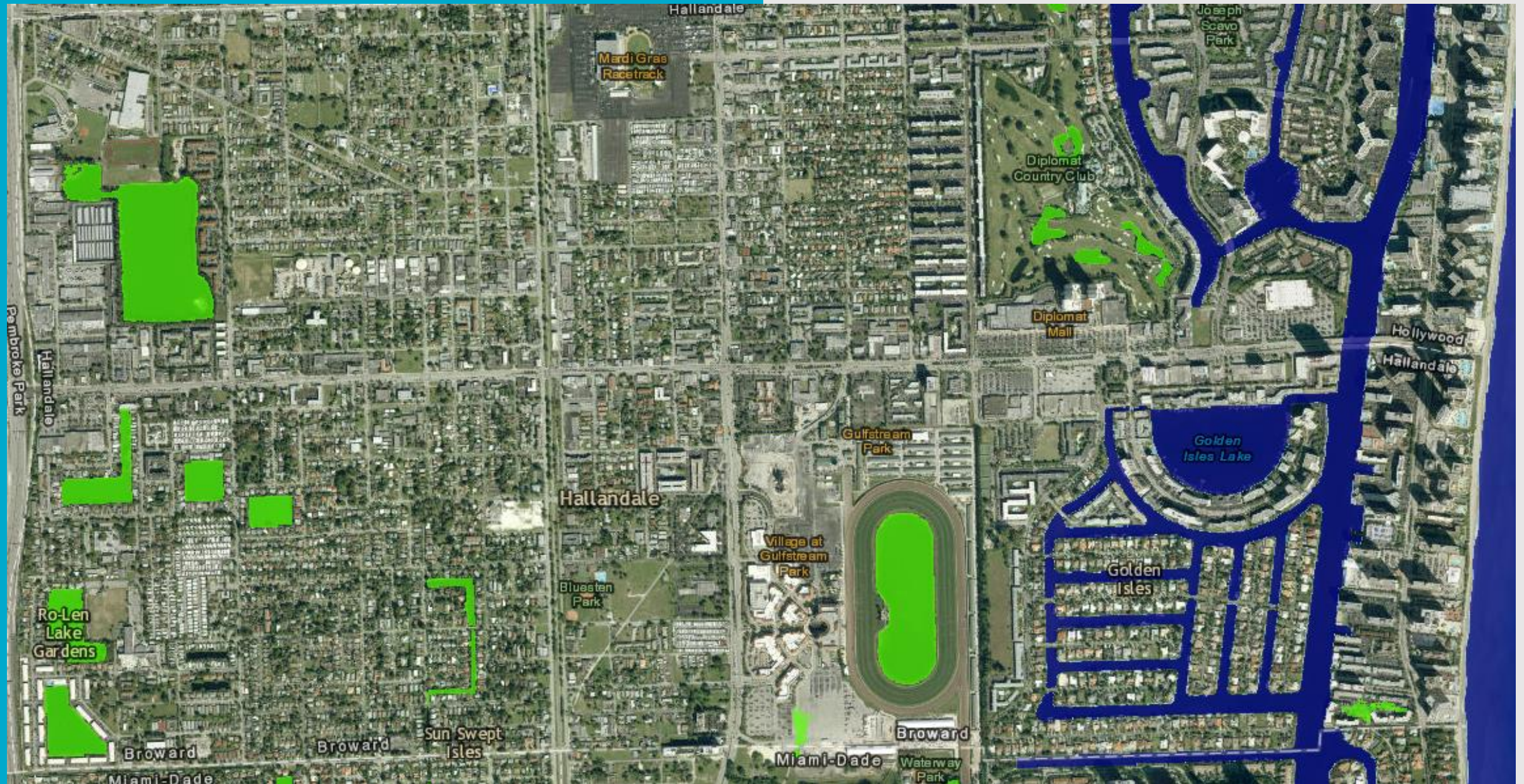
Explore and adopt resources, tools and best practices

Integrate RD Summary Report into SAP

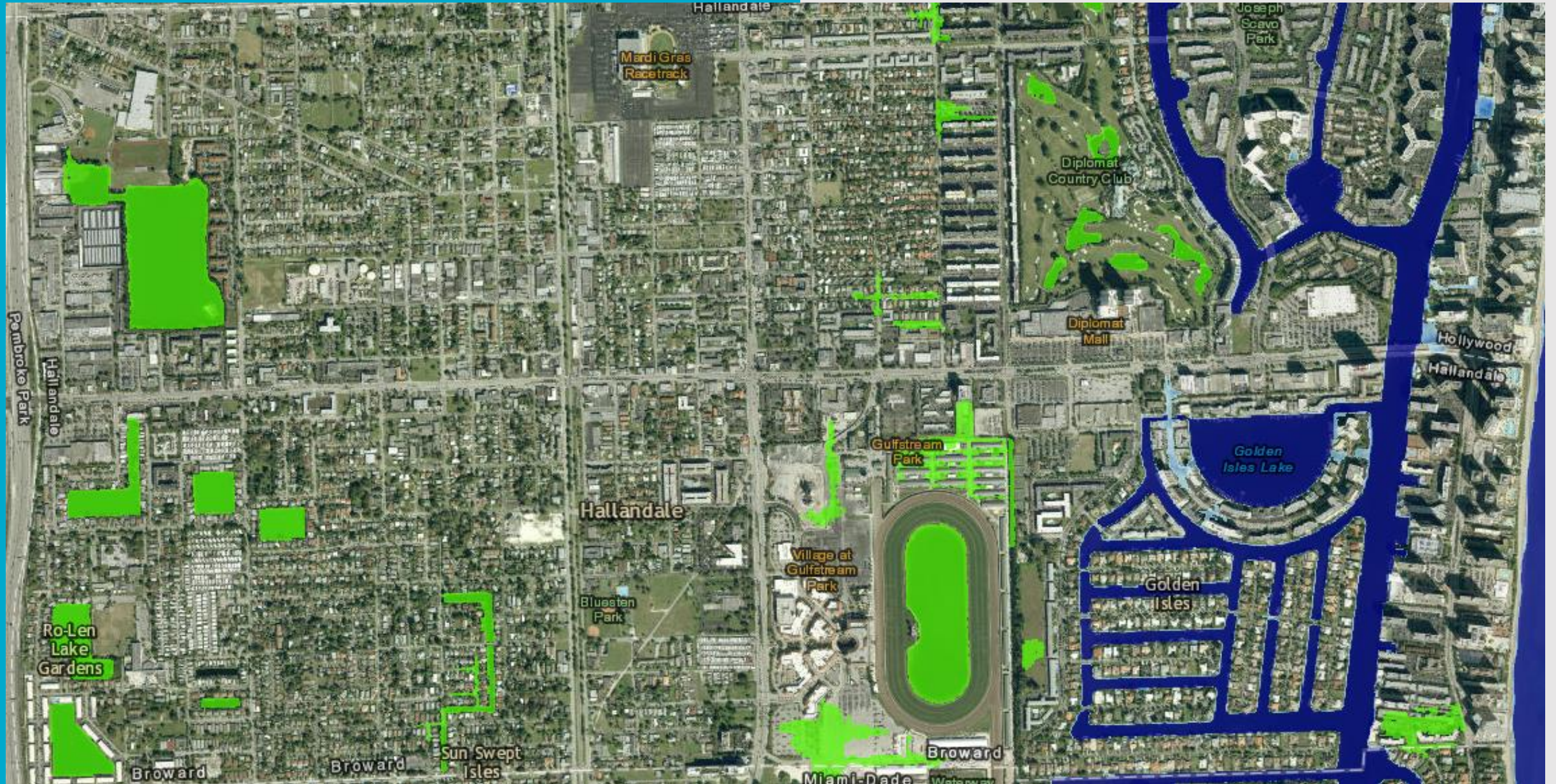
NOAA Sea Level Rise Viewer



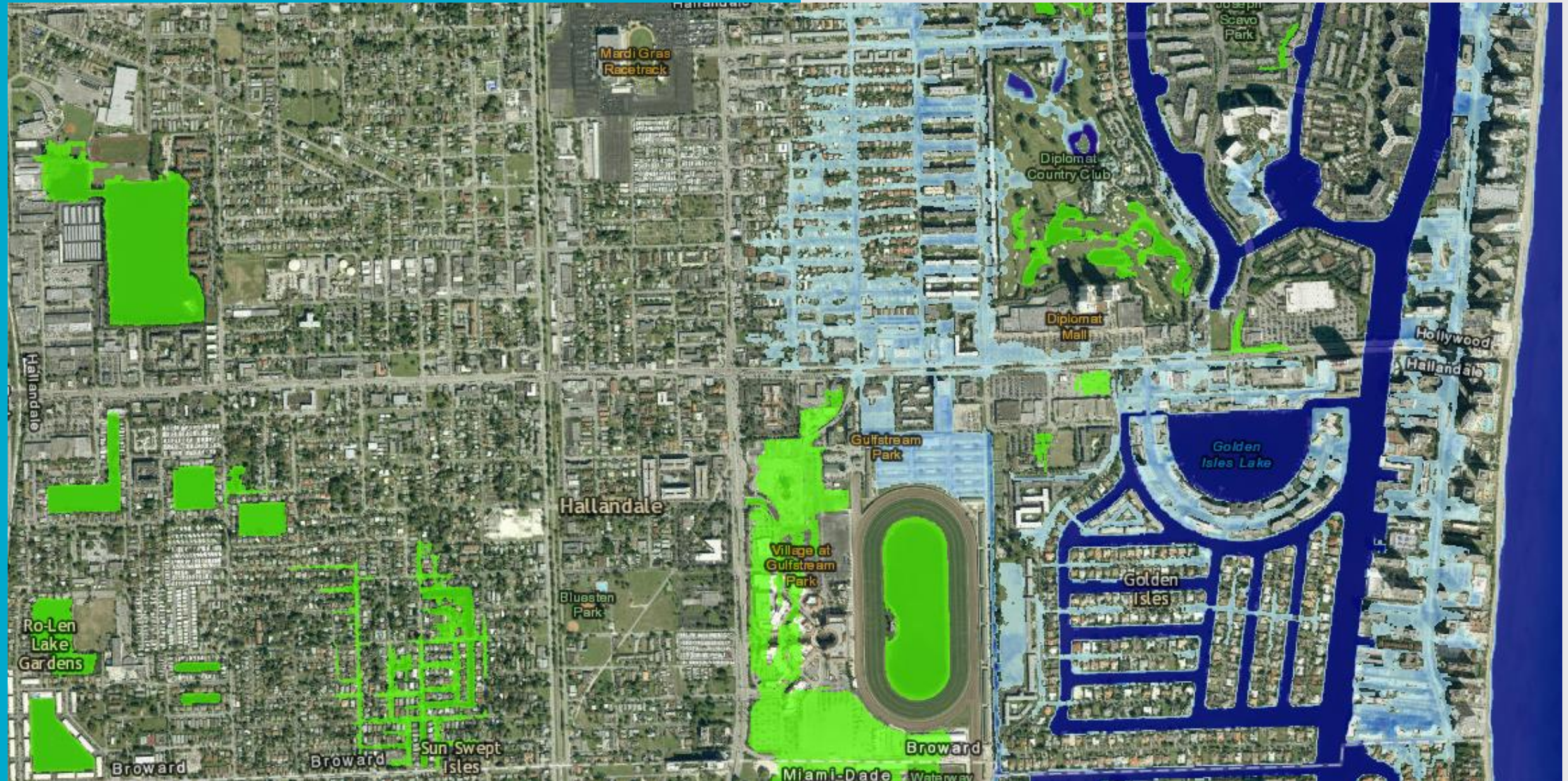
NOAA Sea Level Rise Viewer – 1 Foot Rise



NOAA Sea Level Rise Viewer – 2 Feet Rise (2060)



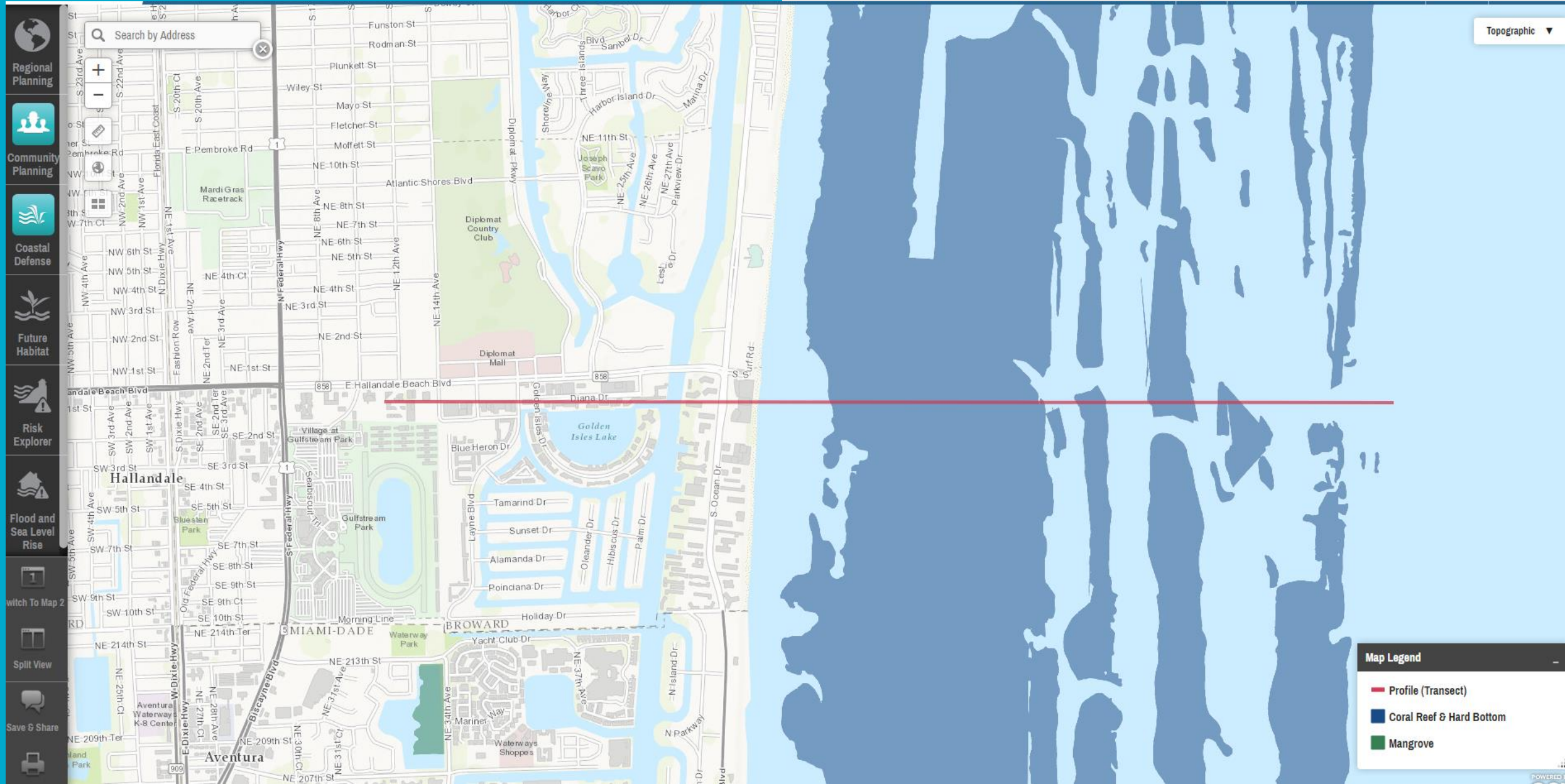
NOAA Sea Level Rise Viewer – 3 Feet Rise (2100)



NOAA Sea Level Rise Viewer – 5 Feet Rise (2100)



The Nature Conservancy Coastal Resilience Mapping Portal



Leads



Developmental Partners



Network Partners



Funding from

