



Hallandale Beach
PROGRESS. INNOVATION. OPPORTUNITY.

NE 14 AVENUE IMPROVEMENTS PROJECT

JANUARY 23, 2017

ORIGINAL SCOPE OF WORK

- Provide trees and shrubs on West swale area along NE 14 Avenue
- Install landscaping around pump stations
- Bulb-outs (landscaping islands) on East side of NE 14th Avenue
- Provide landscape irrigation
- Mill and Resurface NE 14 Avenue including the on street parking spaces
- Install new pavement markings

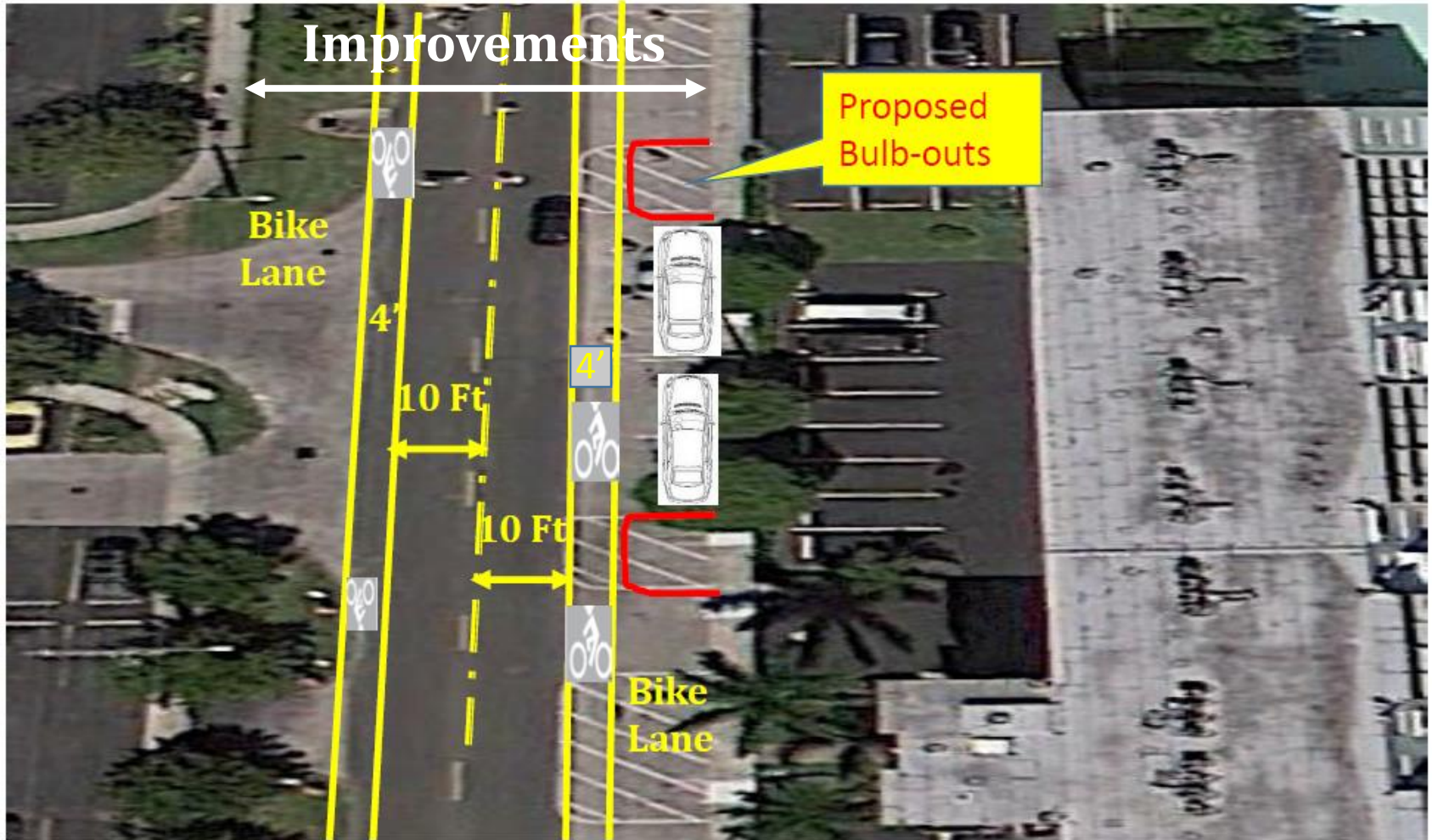
ORIGINAL SCOPE OF WORK

- Provide bike lane on both sides of roadway
- Install two crosswalks (NE 4 Street and in front of RK Plaza)
- Provide resting areas (benches, trashcans, etc.)
- Provide PaveDrain concrete block access drives on each side of two stormwater pump stations
- Provide curbing at existing driveway entrances

ADDED SCOPE OF WORK

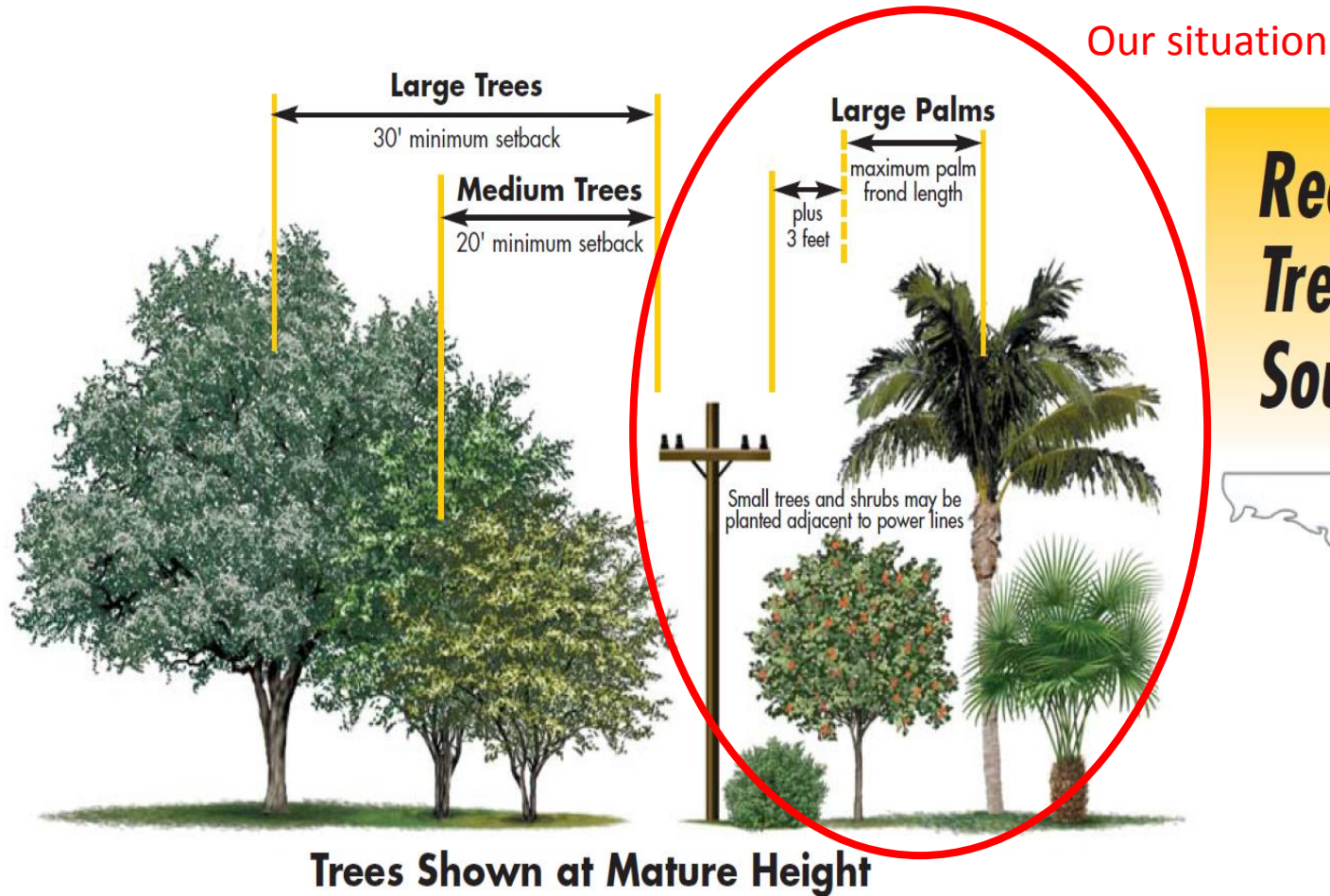
- Provide **Green** bike lane on both sides of roadway
- **Lighted** crosswalk (in front of RK Plaza)
- **Install two bus shelters**

NE 14 AVENUE



[illegible]

LANDSCAPING CHALLENGES



***Recommended
Trees for
South Florida:***



LANDSCAPING RENDERINGS

Before



After



LANDSCAPING RENDERINGS

Before



After



LANDSCAPING RENDERINGS

Before



After



LANDSCAPING MATERIAL

1. CS- Silver Buttonwood Tree

Commonly used under power lines because it is among one of the taller options that can be planted under power lines. Creates a mint silver contrast with the other darker green landscape.



LANDSCAPING MATERIAL

2. MF- Simpson's Stopper multi-trunk tree

Evergreen and has an attractive brown cinnamon color bark. Can be pruned to expose lower branching



LANDSCAPING MATERIAL

3. CW- White Geiger Tree

Similar to the orange Geiger, but with white flowers



LANDSCAPING MATERIAL

4. ROX- Royal Palms

Planted next to the pump stations.



LANDSCAPING MATERIAL

5. VEX- *Veitchia merrillii*

Small palm that can be planted adjacent to power lines. Will serve as additional screening against the pump stations.



LANDSCAPING MATERIAL

6. VMT- Montgomery Palm

Medium sized palm that mimics the same style and texture of the Vietchia merrilii palm planted on the opposite side of the road. Will be planted in the landscape bump outs to balance the palm character used on the opposite side of the road.



LANDSCAPING MATERIAL

The following shrubs will be installed along the corridor:

1. CRQ - Queen Emma Crinum (36"height X 36"spread):



LANDSCAPING MATERIAL

2. CME - Emerald Blanket Carissa (12"height X 14"spread):



LANDSCAPING MATERIAL

3. CLG – Small Leaf Clusia (30"height X 24"spread



LANDSCAPING MATERIAL

4. CG2 – Small Leaf Clusia (5'height X 3'spread)



LANDSCAPING MATERIAL

5. CES – Silver Buttonwood (30" height X 24" spread):



LANDSCAPING MATERIAL

6. CES – Silver Buttonwood (30"height X 24" spread):



LANDSCAPING MATERIAL

7. HYL – Spider Lily (18"height X18"spread)



LANDSCAPING MATERIAL

8. MUC – Pink Muhly (24"height X 24"spread)

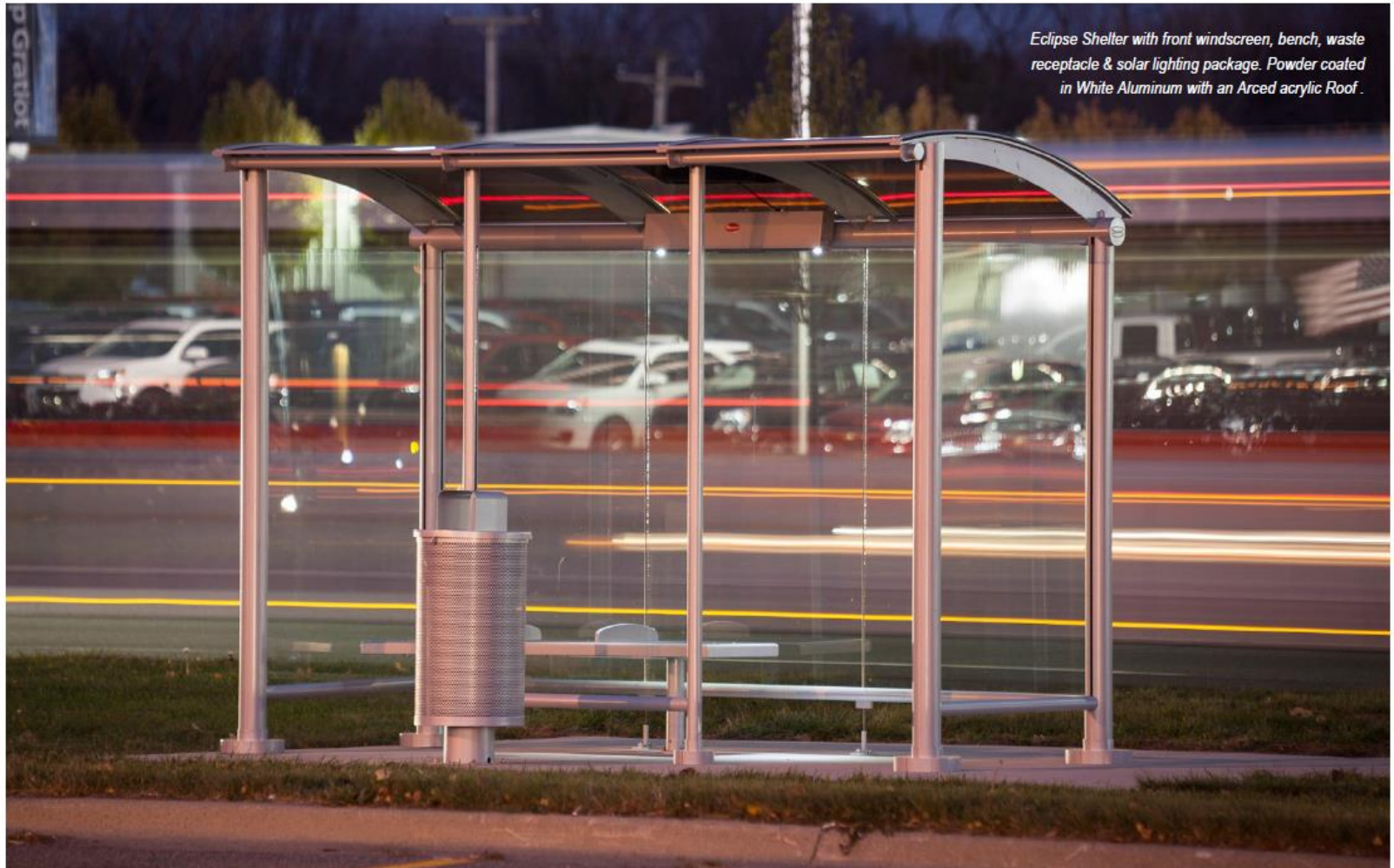


LANDSCAPING MATERIAL

9. ZAP - Coontie (18"height X 18"spread)



BUS SHELTERS



Eclipse Shelter with front windscreen, bench, waste receptacle & solar lighting package. Powder coated in White Aluminum with an Arced acrylic Roof.

CONSTRUCTION COST ESTIMATE

Improvements Type	Construction Cost Estimate
Original Scope of Work	\$1,134,348.00
Added Scope of Work	
Option 1 - Solid Green Bike Lanes	\$212,000.00
Option 2 - Green utilized in transition areas	\$47,432.00
Two Bus Shelters	\$46,000.00
One lighted cross walk	\$80,000.00
Total Option 1	\$1,472,348.00
Total Option 2	\$1,307,780.00
Available Budget for Construction	1,220,679.00

Note: crosswalks and green bike lane will not be maintained by Broward County

PROJECT STATUS

DESIGN & PERMITTING

- 90% Design plans completed
- Permitting with Broward County Traffic and Broward County Transit in progress
 - Comments to the crosswalk traffic study pending to be addressed
 - No comments received from Broward County Transit

TENTATIVE PROJECT SCHEDULE

- Finalize design plans: 2 weeks after approval from Broward County
 - Any design changes will further delay the completion of the final design plans (additional design service will require change order and Commission approval)
- Bid preparation and advertising: 6 weeks from completion of design plans
- Agenda item preparation and Commission award: 6 weeks from open bid.
- Contract execution, purchase order, pre-construction meeting, notice to proceed: 2 months from construction award
- Construction start time: two weeks from notice to proceed

QUESTIONS?

