



Hallandale Beach
PROGRESS. INNOVATION. OPPORTUNITY.

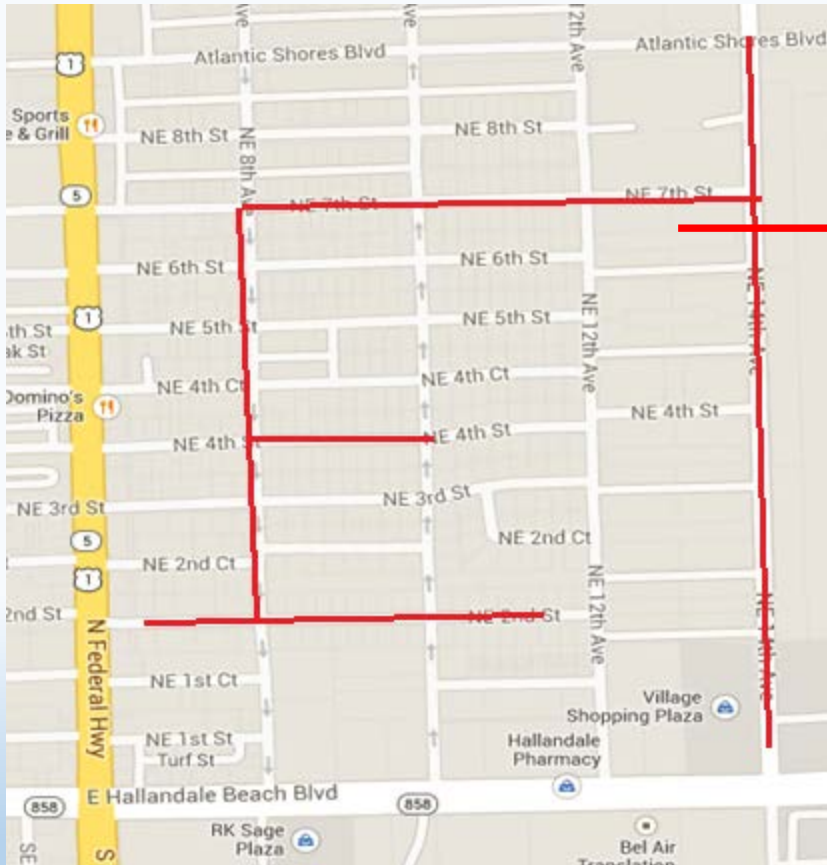
Northeast Quadrant Drainage Improvements Project

MARCH 24, 2015

6 P M

Introductions

Project Location



- Federal Highway to NE 14th Avenue, Hallandale Beach Blvd to Atlantic Shores Blvd

Purpose of the Northeast Drainage Improvements

Reasons for the Project

- Lessen impacts from major storm events
- Reduce property damage due to major wet weather events
- Rapid response after a major rain storm



900 NE 7 Street



NE 14 Avenue

PROJECT STATUS



Hallandale Beach
PROGRESS. INNOVATION. OPPORTUNITY.

NE QUADRANT STATUS REPORT

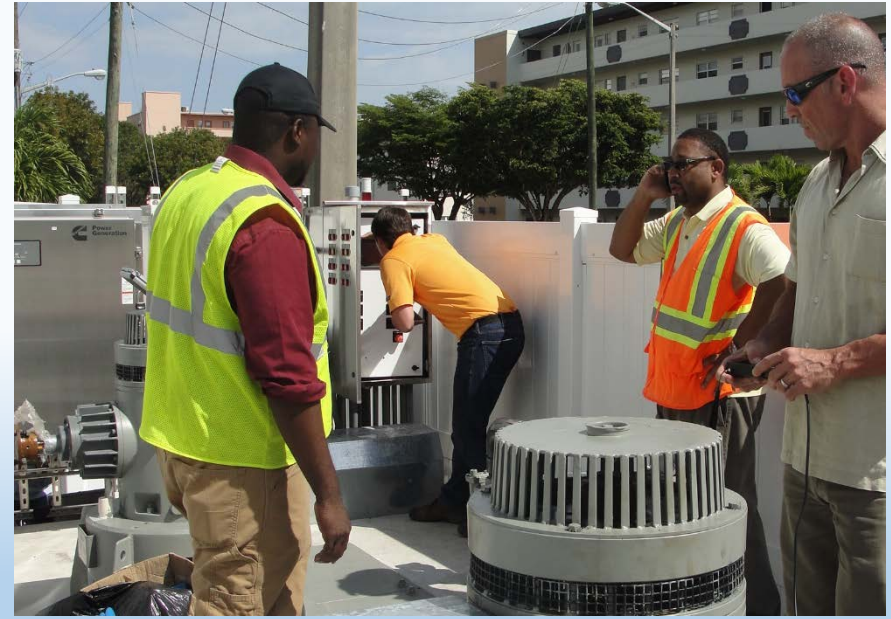
- Construction of the Drainage and Pump Stations - Complete
- Paving NE 14th Avenue - Complete
- Sidewalk Restoration NE 14th Avenue- Complete
- Paving and Seal Coating Parking Lots- In progress
- Landscaping along NE 14th Avenue – Finalize scope of work – In progress

PUMP STATIONS

233 NE 14 AVENUE
(PS#1)

1301 NE 7 STREET
(PS#2)

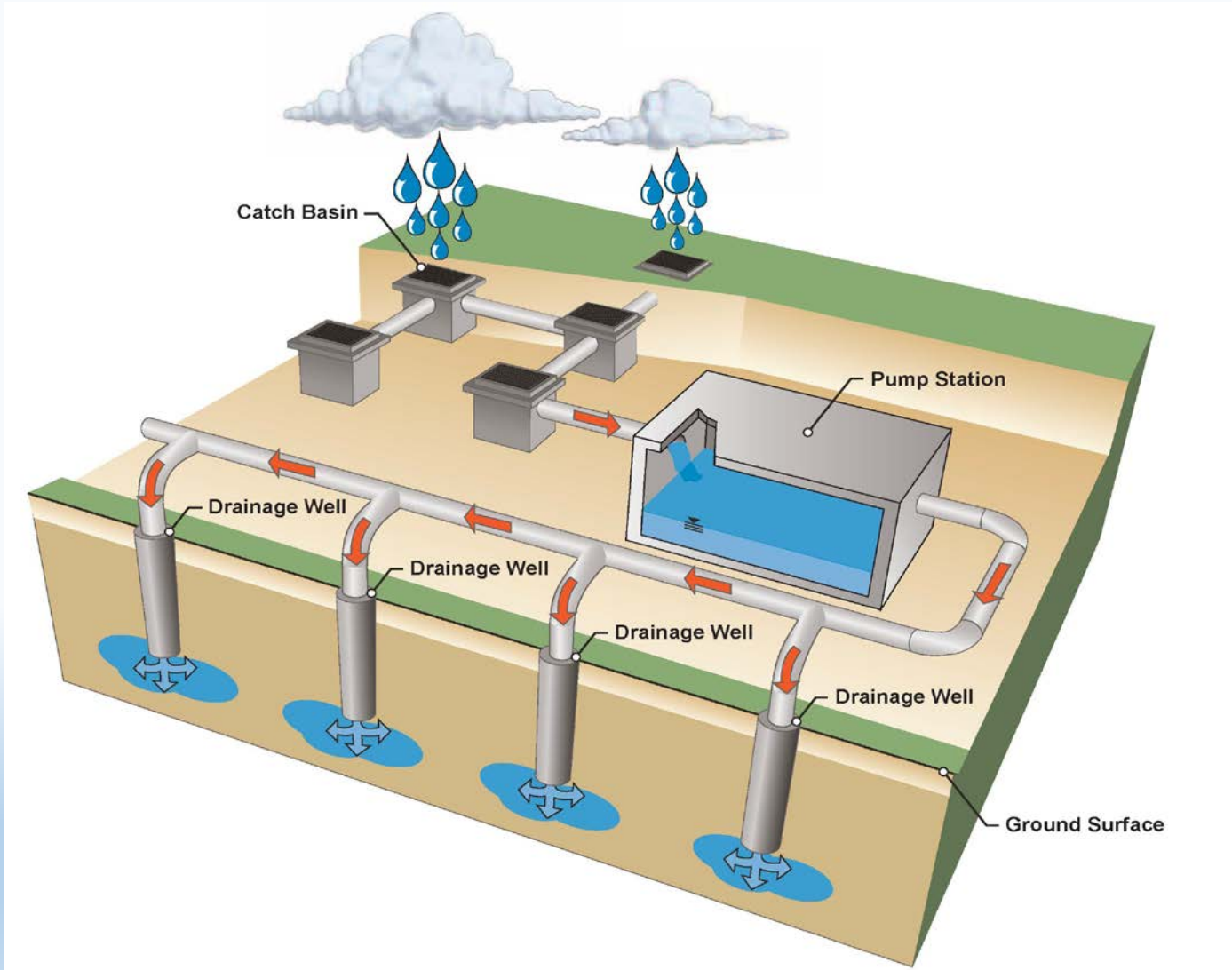
**Construction 100%
Complete**



PUMP STATIONS

- Construction – Complete
- Testing of generators, engines, pumps, control panels – Complete
- Site visit performed by Florida Department of Environmental Protection (FDEP) – Complete on 3-20-2015
- Final approval from FDEP - Pending

HOW DOES THE SYSTEM WORKS?



Paving and Seal Coating Parking Lots

- 1301 NE 7th Street – Paving Parking Lot **Complete**
Pending fence installation
- 233 NE 14th Ave- Paving Parking Lot **Complete**
Pending Fence Installation
- XXX NE 14th Ave – Paving Parking Lot **Complete**
- XXX NE 14th Ave – Parking Seal Coating **Complete**
- Additional Seal Coating of parking lots **in progress**

- Landscaping
- Additional Roadway Improvements
- Noise impact analysis

Provide landscaping improvements on NE 14 Avenue

- Install Trees, Shrubs and Irrigations on West Side of NE 14th Avenue
- Enhanced landscaping around pump stations
- Bulb-outs (landscaping islands) for East of NE 14th Avenue

West Side of NE 14th Avenue –Swales Area **Street trees planting, shrubs and irrigations**

- Provide continuity
- Provide with same type of trees along the swale area (Clusia rosea or Green Buttonwood)
- Provide trees with low height to avoid conflict with FPL power lines
- Provide drip irrigation
- Swale area constraints
 - Overhead power lines
 - Underground utilities in the existing swale area
 - Water lines
 - 60 Inch force main
 - Telecommunications conduits (AT& T, Comcast)
 - Electrical conduits for pump stations

West Side of NE 14th Avenue –Swales Area Street trees planting, shrubs and irrigations



VIEW 2
Proposed Streetscape



14th AVENUE STREETSCAPE

THE CITY OF HALLANDALE BEACH
DATE: February 5, 2015



Commitment to residents

- Shrubs and small trees around pump stations
- Royal Palms at PS#2 as part of the easement agreement



233 NE 14 Avenue (PS#1)



1301 NE 7th Street (PS#2)

Enhanced landscaping around pump stations



14th AVENUE STREETSCAPE
THE CITY OF HALLANDALE BEACH
b



14th AVENUE STREETSCAPE
THE CITY OF HALLANDALE BEACH
b

Bulb-outs (landscaping islands) for East of NE 14 Avenue



VIEW 1
Proposed Streetscape with Bulbouts



14th AVENUE STREETSCAPE
THE CITY OF HALLANDALE BEACH
DATE: March 9, 2015



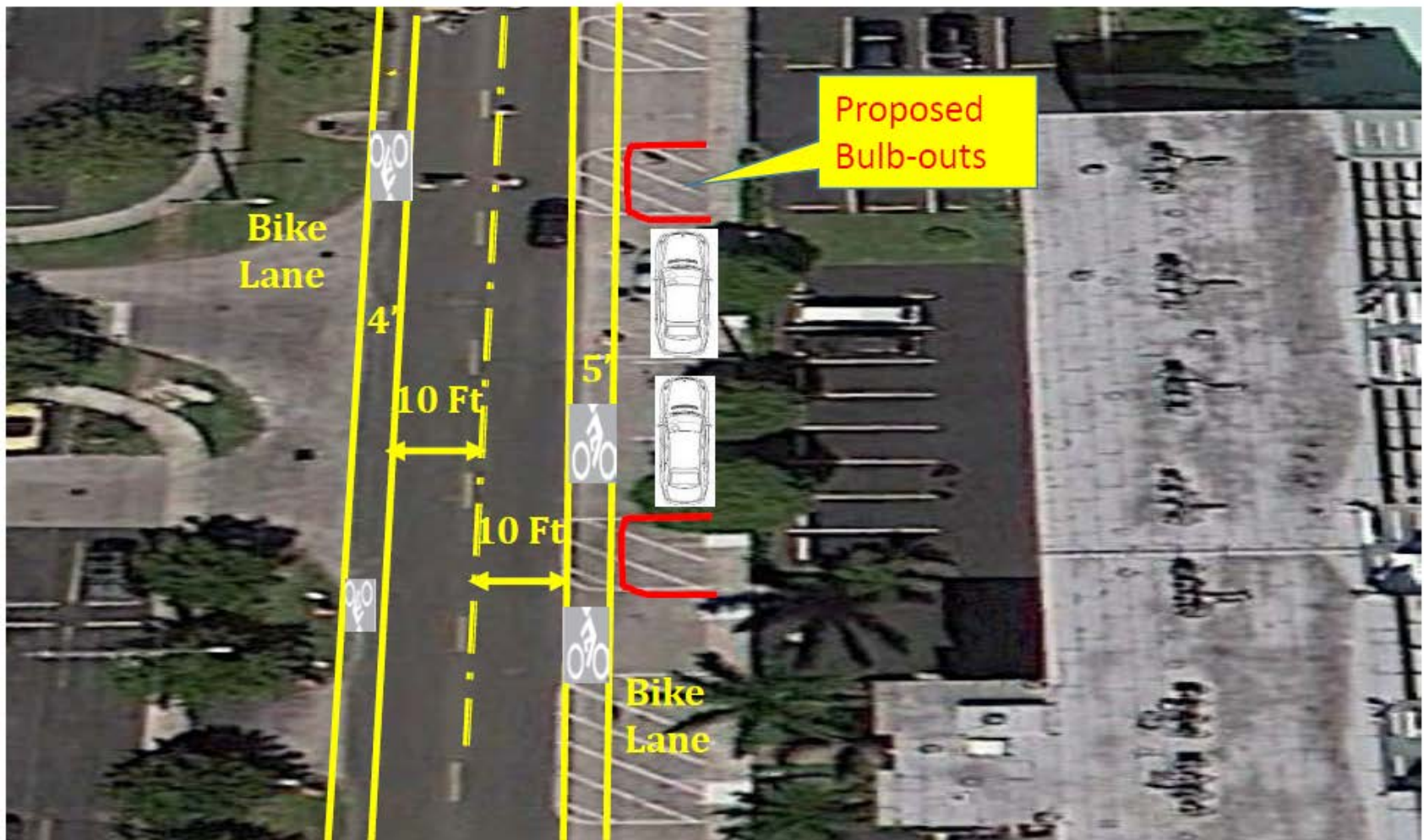
Enhanced **Bulb-outs (landscaping islands)** for East of NE 14 Avenue

- Provide enhancement to previous conditions
- Mill, resurface and stripe existing on-street parking area
- On-Street parking remain as is (parallel)
- Provide landscaped bulb-outs on the existing hatch areas where permitted to include:
 - Trees, Shrubs, Irrigation and Raised Curbs
- **Bulb-outs constraints**
 - Existing canopy expanding over the bulb-outs area
 - Bus stops bays
 - Ingress and egress to driveways
 - Line of sight

Provide Additional Roadway Improvements on NE 14 Avenue

- Bike lanes
- Curbing at driveway entrances
- Pedestrian crossing
- Resting areas – benches, trash cans

Bike Lanes

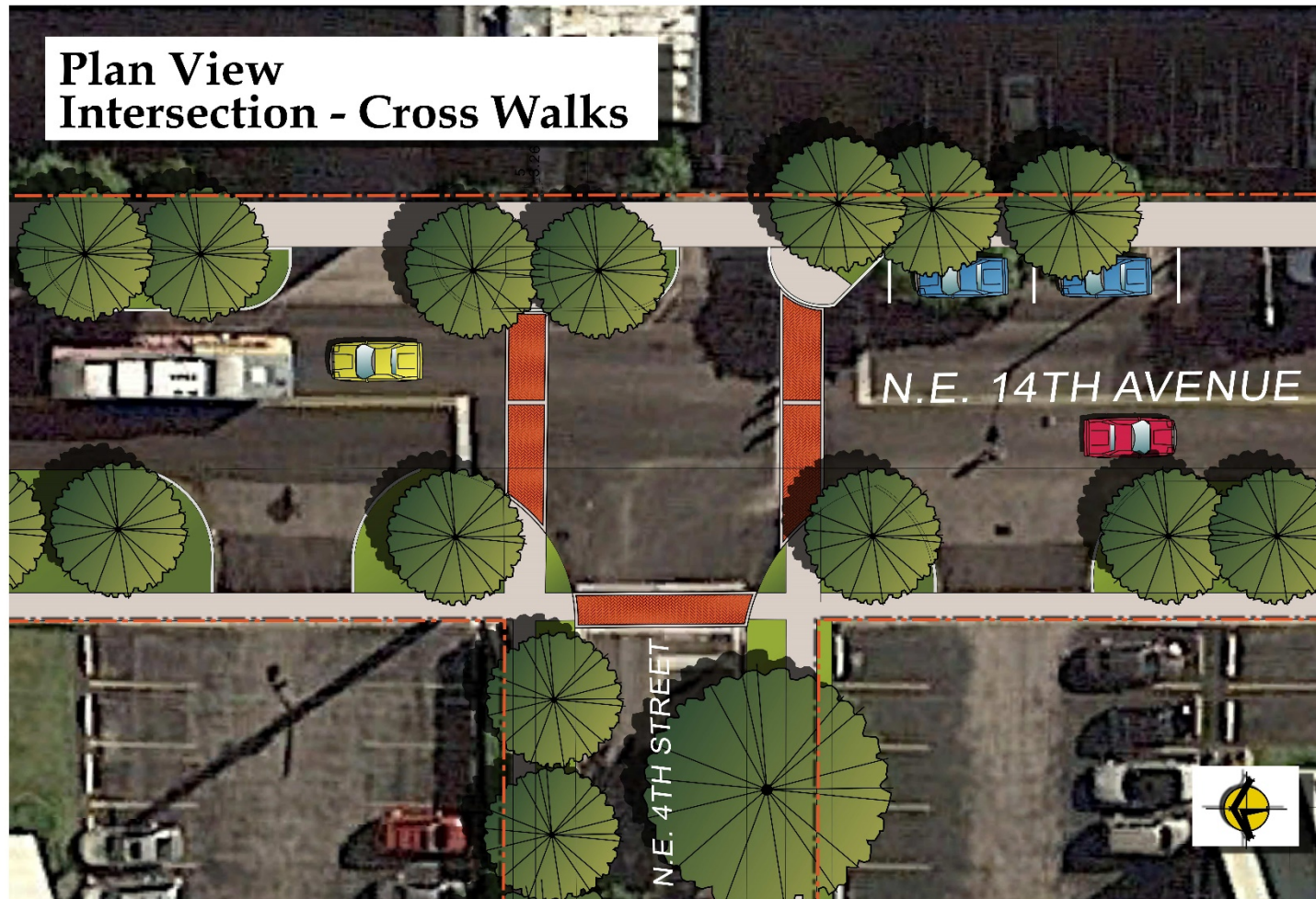


Curbing at driveway entrances



Pedestrian Crossings

Plan View
Intersection - Cross Walks



14th AVENUE STREETSCAPE

THE CITY OF HALLANDALE BEACH
DATE: March 3, 2015



Resting areas – benches, trash cans



14th AVENUE STREETSCAPE
THE CITY OF HALLANDALE BEACH
DATE: MARCH 5, 2015



- Staff to secure professional services with an Acoustical Engineering firm
- Acoustical Engineering firm to perform noise impact analysis
- Acoustical Engineering firm to prepare study report with findings and recommendations

SUMMARY

- City is awaiting final sign-off on pump operations from Department of Environmental Protection
- City will secure professional services for noise impact analysis
- Move forward with design for landscaping and roadway improvement once the scope of work is finalized



NE 12 Avenue



NE 10 Avenue



NE 8 Avenue



NE 12 Avenue

2009 Storm Event

Contact information

- Project Manager: AJ Ajayi
 - Phone: 954-457-1621
 - Email: aajayi@cohb.org
- City Engineer: Mariana Pitiriciu
 - Phone: 954-457-3042
 - Email: mpitiriciu@cohb.org



QUESTIONS?

