

BLUESTEN PARK GMP PRESENTATION

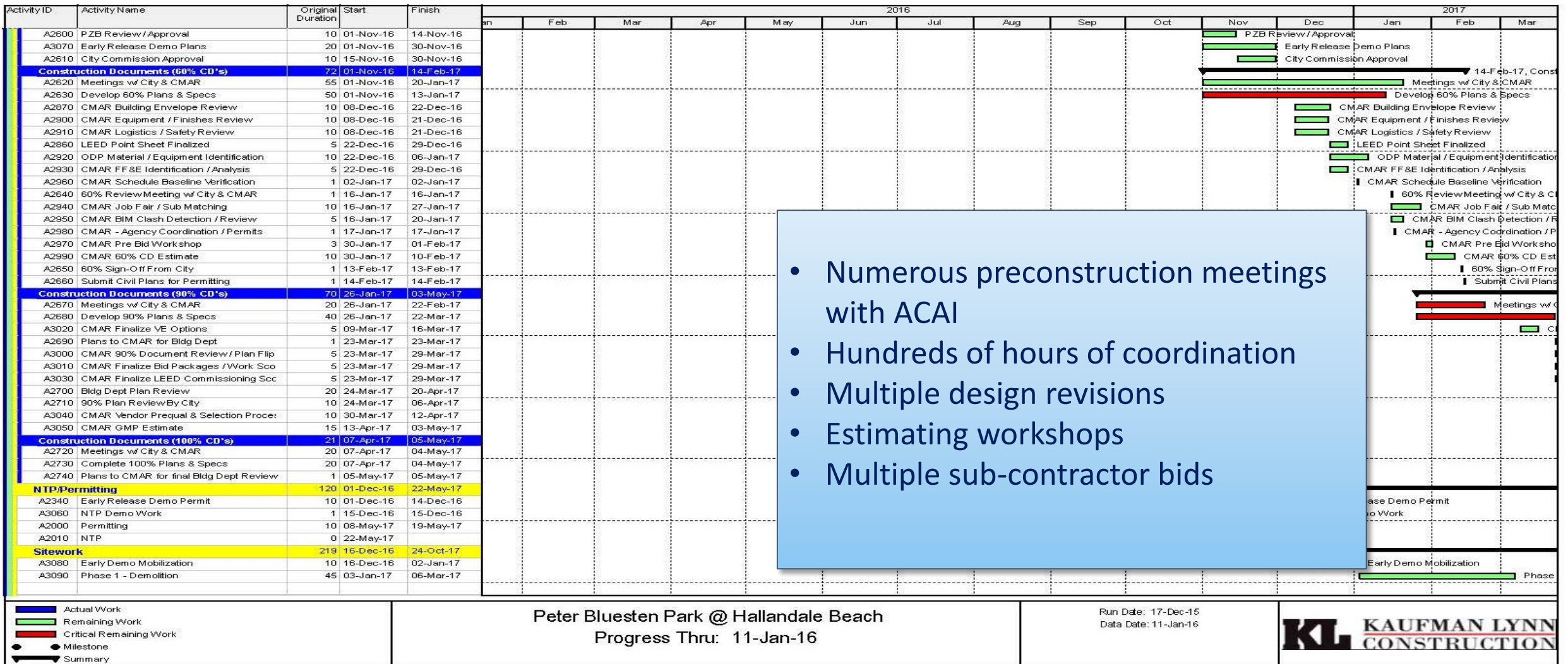


The Future is about to be revealed.....

BLUESTEN PARK.... THE FUTURE IS NOW !!!!!



Scheduling towards a GMP



30%

CDs

Course
Correct



A stack of approximately 10 documents, each showing a detailed construction estimate table with multiple columns for item descriptions, quantities, and costs. The top document is clearly visible, showing a table with columns for 'ITEM NO.', 'ITEM DESCRIPTION', 'QUANTITY', 'UNIT', 'PRICE', and 'TOTAL'. The table is filled with data, and a yellow horizontal line highlights a specific row.

60%

CDs\
(GMP I)

Course
Correct



A stack of approximately 10 documents, each showing a detailed construction estimate table. The top document is clearly visible, showing a table with columns for 'ITEM NO.', 'ITEM DESCRIPTION', 'QUANTITY', 'UNIT', 'PRICE', and 'TOTAL'. The table is filled with data, and a yellow horizontal line highlights a specific row.

90%/

(GMP I)

A stack of approximately 10 documents, each showing a detailed construction estimate table. The top document is clearly visible, showing a table with columns for 'ITEM NO.', 'ITEM DESCRIPTION', 'QUANTITY', 'UNIT', 'PRICE', and 'TOTAL'. The table is filled with data, and a yellow horizontal line highlights a specific row.

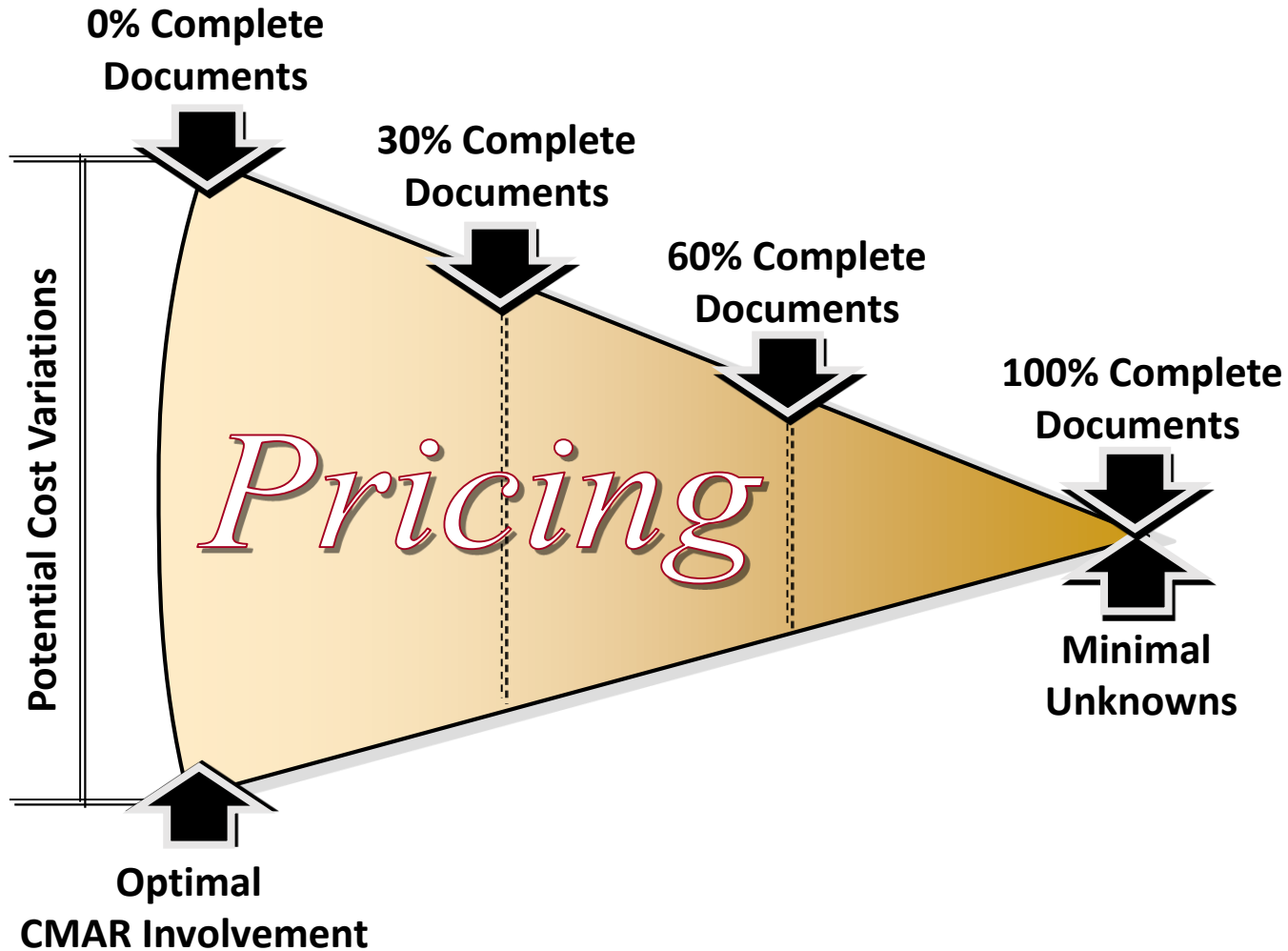
THE PRICING PLAYBOOK



- Value achieved through multiple subcontractor bids
- Cost estimate leveling method to determine the best qualified subcontractor
- Value engineering with the use of comparable materials
- Complete transparency with an open book policy between the City and CMAR

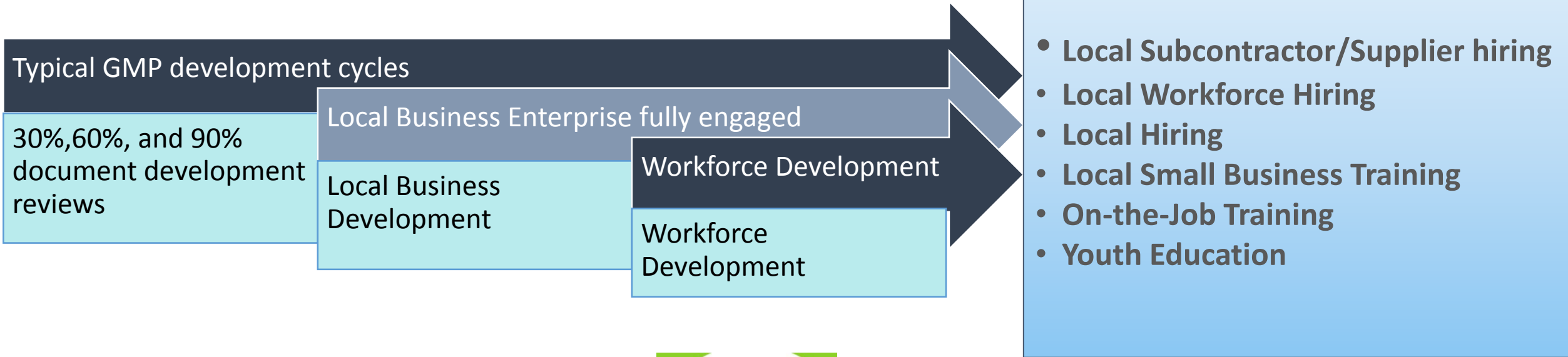


Where is the Team today?



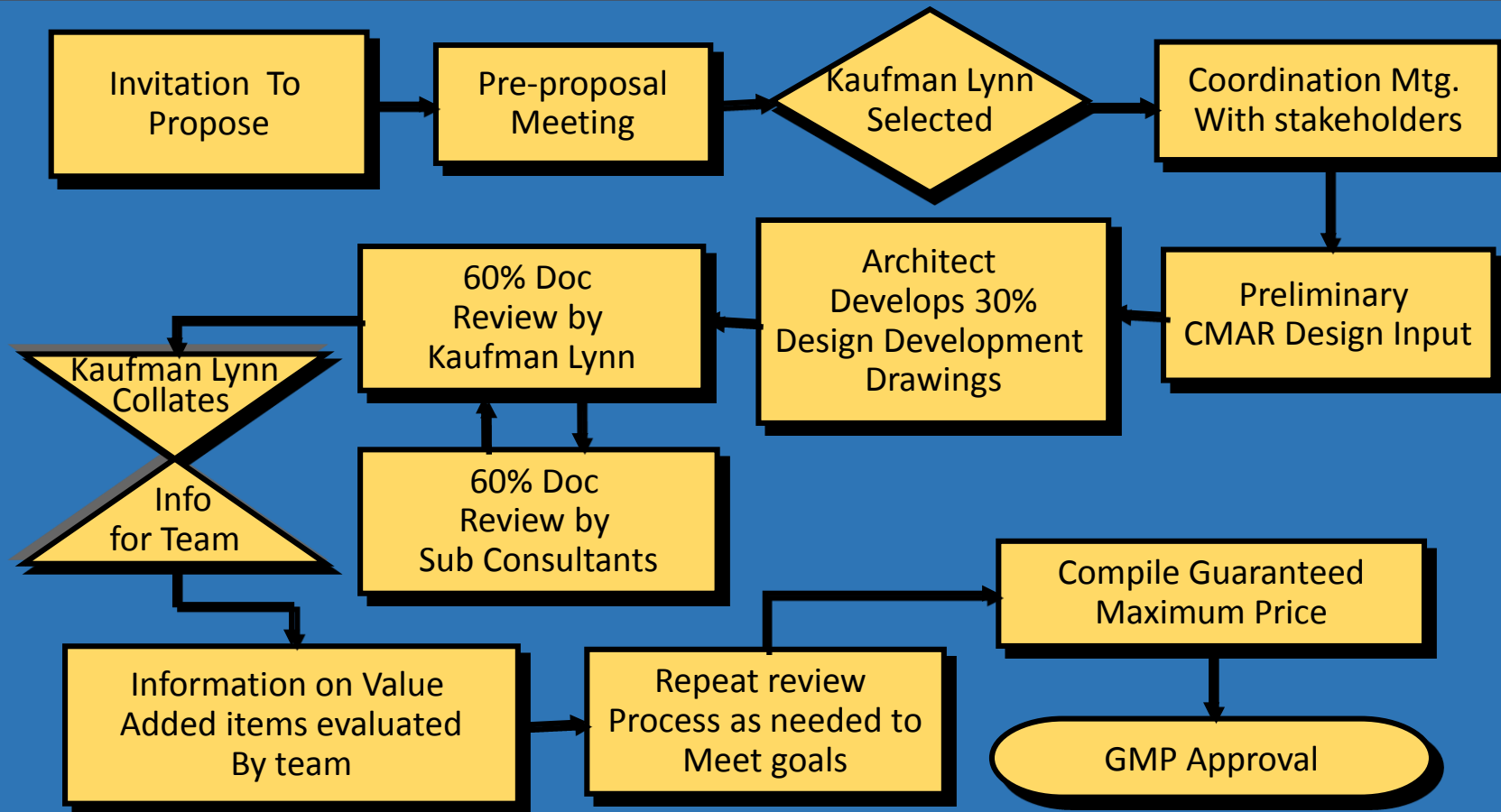
- 90% design documents submitted to Building Department
- Phase I building permit to be released shortly

Community Benefit Plan



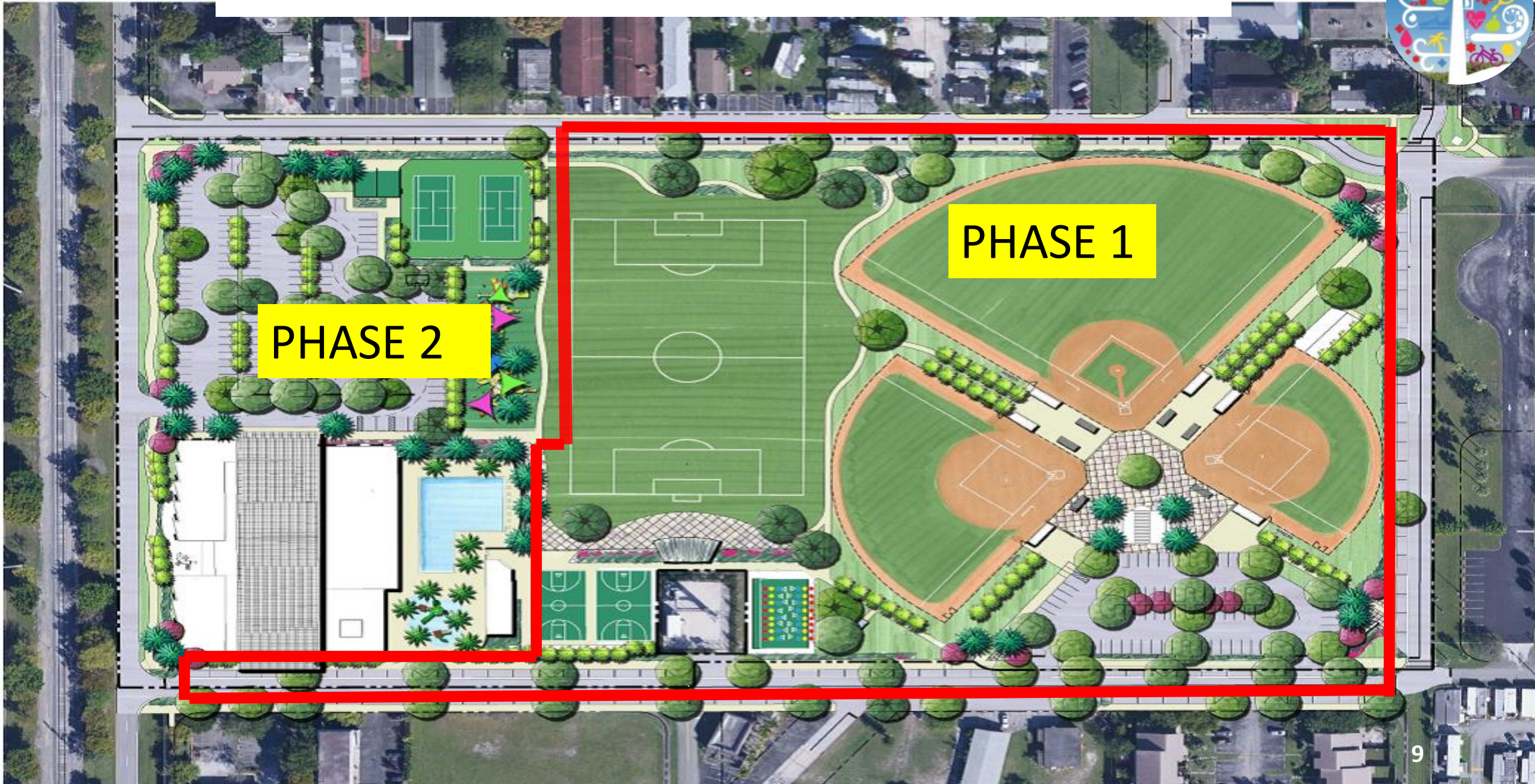


The “Right” Pre-Construction Services for Bluesten Park



- Kaufman Lynn utilized the same process on the parks as we do in every project.
- Initial Opinion of Probable Construction Cost at 30%, 60% and 90% document reviews were performed.

THE BLUESTEN PARK PHASING PLAN



QUESTIONS?

