

City of Hallandale Beach Sustainability Action Plan

*CITY COMMISSION BRIEFING
MARCH 1, 2017*

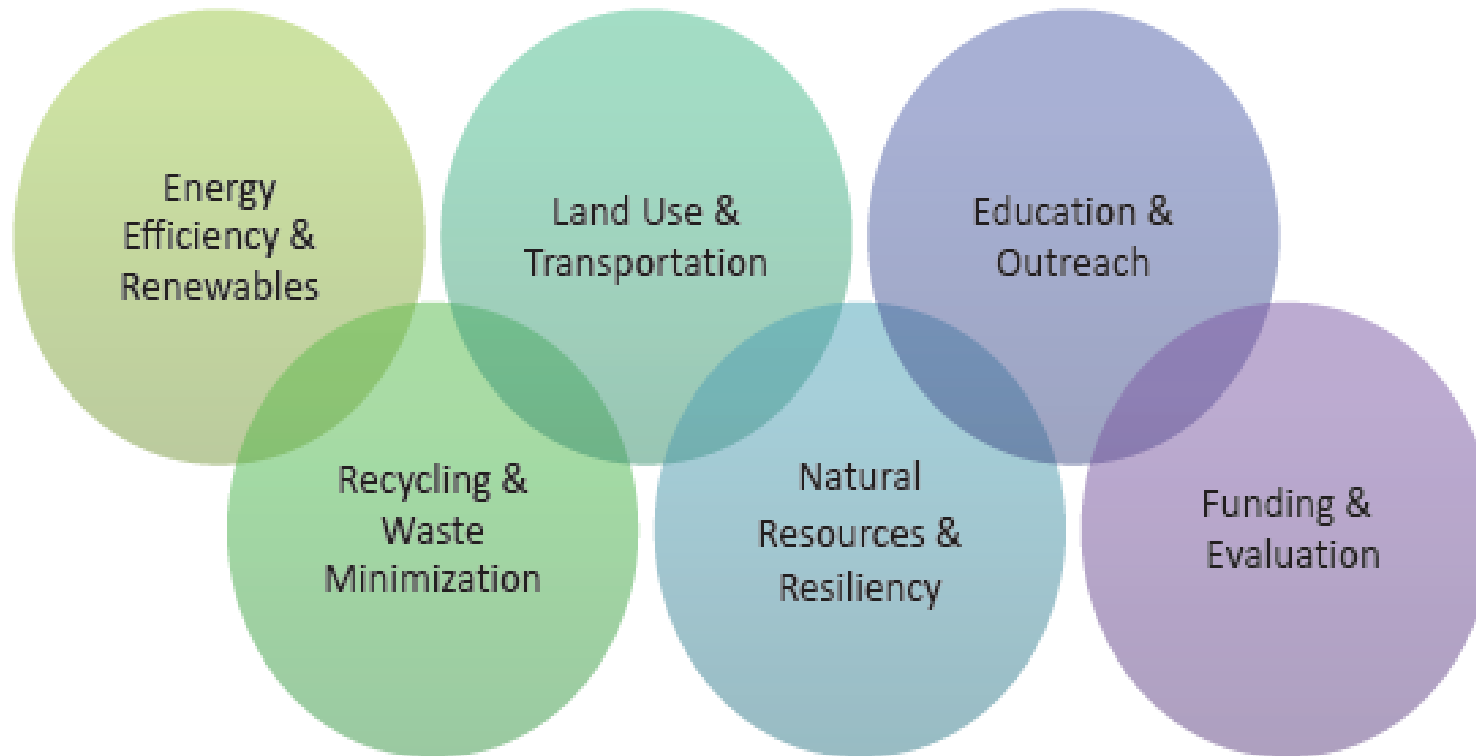


ARCHITECTURE | ENGINEERING | CONSULTING

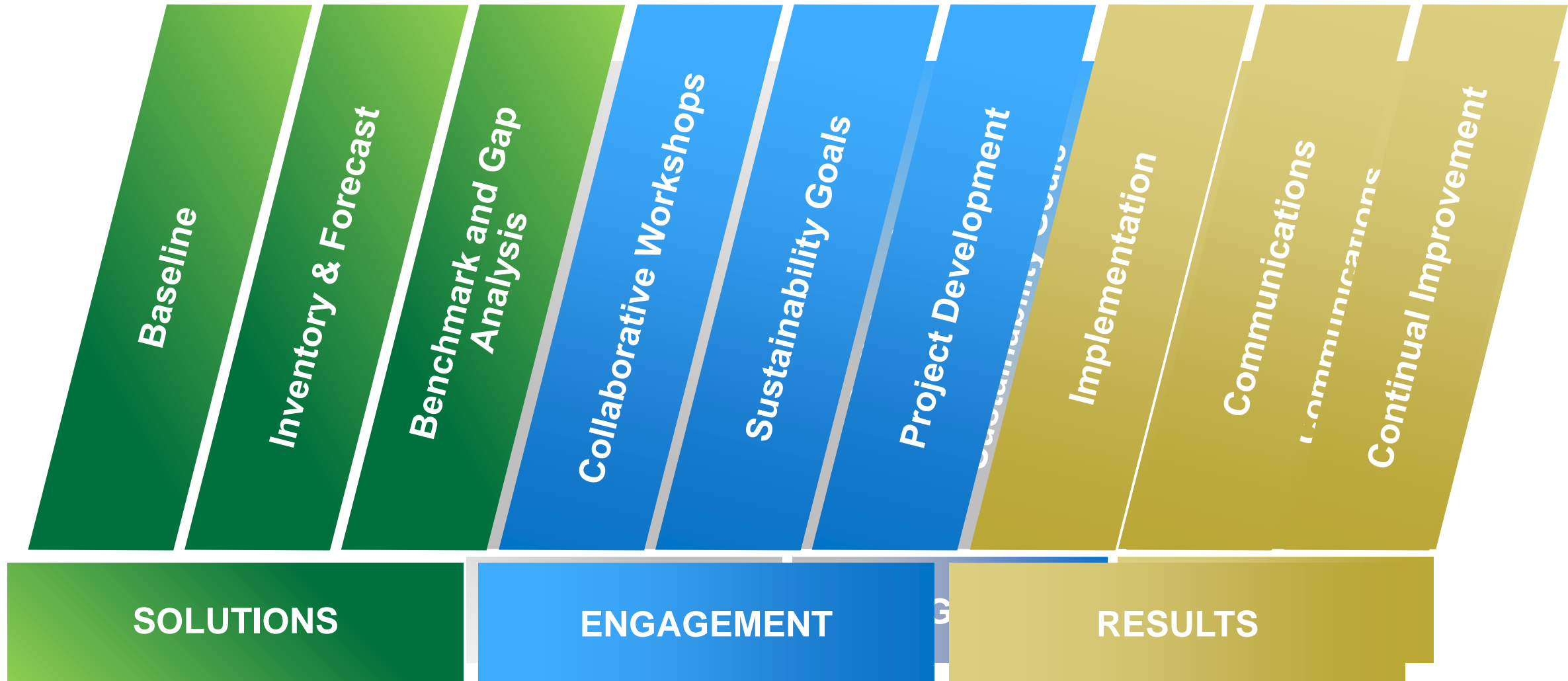


Challenge and Proposed Focus Areas

“Provide a long-term blueprint for public and private-sector decision making that substantially advances the City in its pursuit of holistic sustainability and quality of life...”



Systematic Approach



Proven Results

- » RS&H is the one sustainability firm that consistently delivers strong financial performance and environmental and community-wide benefits, as proven by
 - 14 years of sustainability experience,
 - 50 sustainability projects in Florida and
 - \$255 million in value for our clients.



Successful Sustainable Organizations

Shared Vision

Agile Organization

Systematic
Motivation

Continual
Improvement

Recurring Funding
Mechanism



Focused on Integrating Sustainable Business Practices

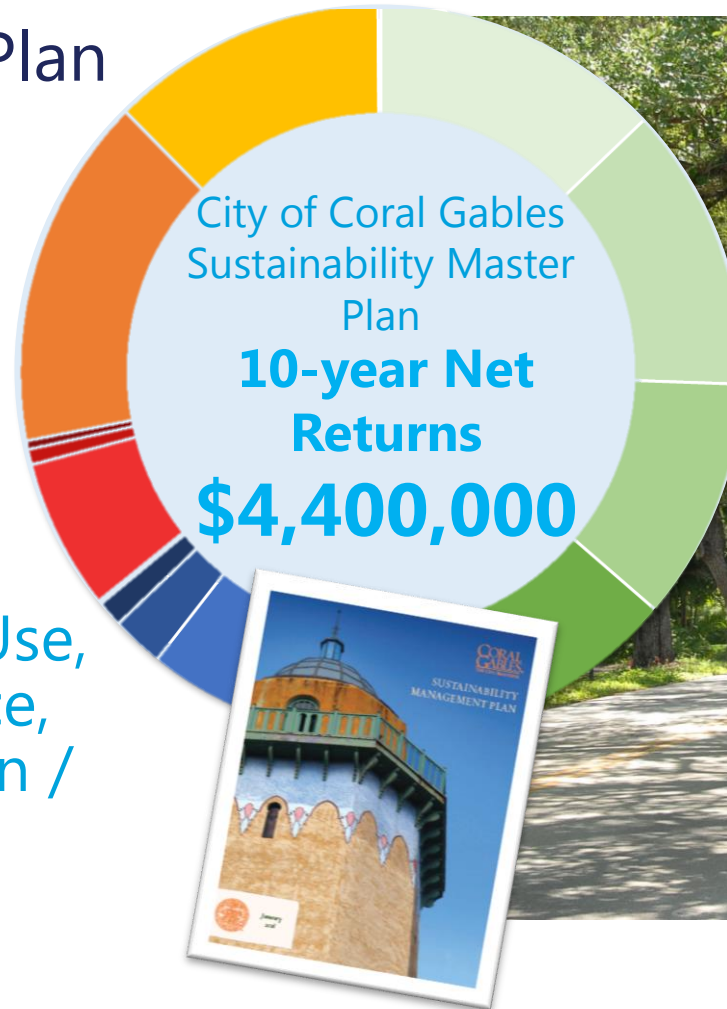
- » Committed to our clients' success & continual improvement
 - 1B lbs. of waste diverted
 - 1B gal. of water conserved
 - 3B kWh of energy saved
- » Strong technical & organizational solutions



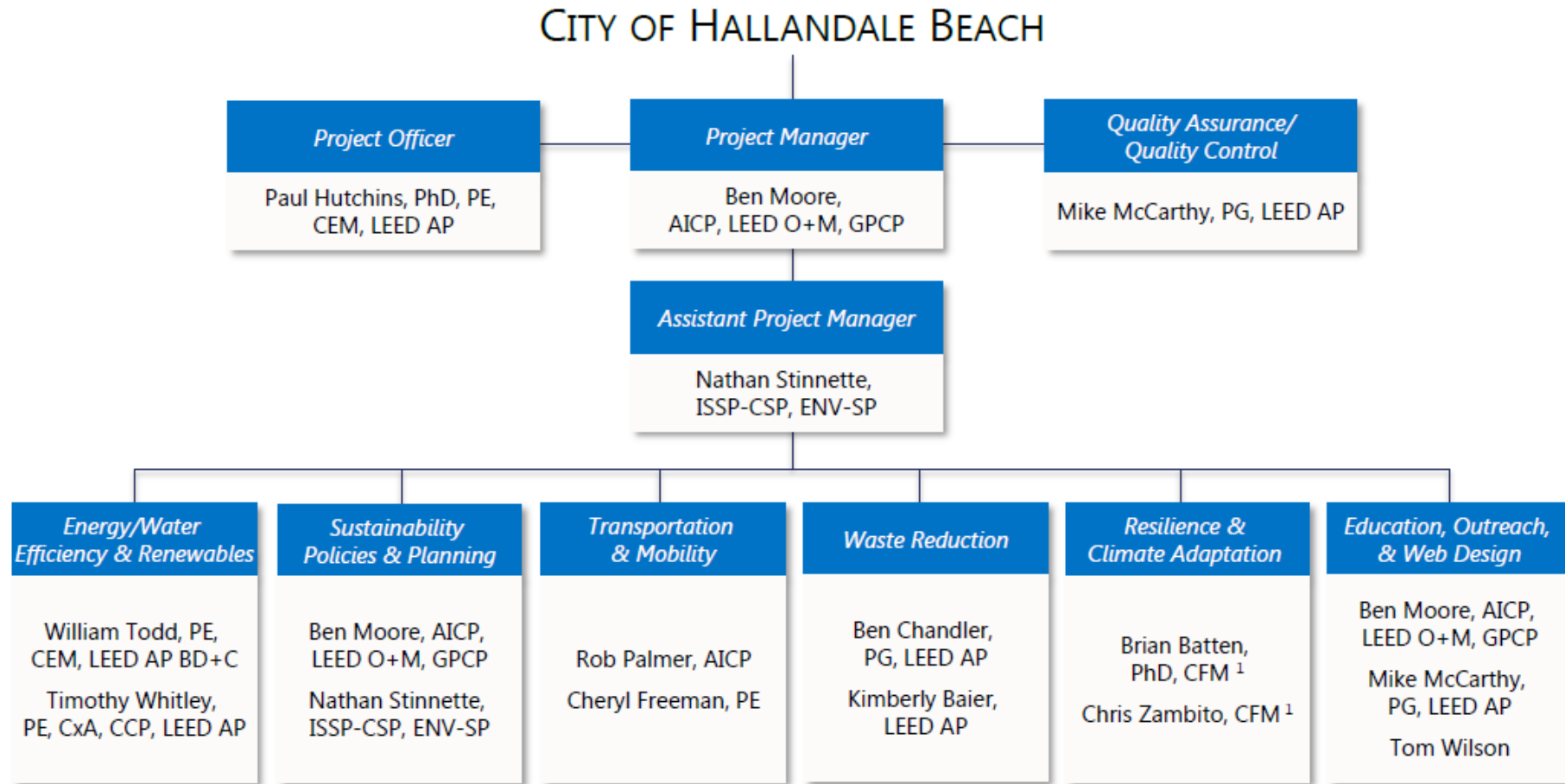
Experience: Leveraging Sustainability Resources

» Coral Gables Sustainability Plan

- Collected data, established baselines and benchmarked results against peer cities
- Qualitatively assessed sustainability operations in 15 departments
- Evaluated 8 focus areas: Energy, Water, Waste Land Use, Transportation, Fleet, Finance, Climate Resilience, Education / Outreach,



Introduction: Project Team



Introduction: Key Personnel



MIKE MCCARTHY, PG, MBA
PROJECT DIRECTOR
ENVIRONMENT & SUSTAINABILITY LEADER

Integrates sustainability into operations, with over 14 years experience at home & abroad. Projects recognized by NASA, US DOD & Florida Public Transportation Association.



BEN MOORE, AICP, LEED AP O+M
PROJECT MANAGER
ENERGY & ENVIRONMENTAL PLANNER

Delivers high ROI energy, transportation, waste and water solutions for comprehensive project portfolios with 10 years of experience & more than 30 sustainability projects.



NATHAN STINNETTE, CSP, ENV-SP
ASSISTANT PROJECT MANAGER
SUSTAINABILITY PROFESSIONAL

Generates organizational & community-wide value through systematic solutions, with 8 years of experience & training in the Natural Step Method. More than 25 sustainability projects.

Draft Schedule (Months from NTP)

Kickoff, Interviews & Assessment (0.5 mos.)		
Solutions		Results
Data Collection	(2.0 mos.)	SA Plan/ Implementation Strategy * (7.5/8.0 mos.)
Baseline & Benchmark	(4.0 mos.)	Funding, Communication & Monitoring (7.5 mos.)
Solutions Memo	(4.5 mos.)	City Commission Approves SAP (8.5 mos.)
Engagement		
Collaborative Workshop	(4.5 mos.)	* Project-driven, typical ROI 20X.
Community Workshop	(4.5 mos.)	
Goals & Projects	(6.0 mos.)	

Questions & Answers



MIKE M_CCARTHY, PG, MBA

PROJECT DIRECTOR

ENVIRONMENT & SUSTAINABILITY LEADER

904-256-2263; mike.mccarthy@rsandh.com

