

A PENNY AT WORK



Working for Broward. Working for Hallandale Beach.

October 19, 2016

Why a Penny?

A PENNY
AT WORK



- Safer communities
- Synchronized traffic light systems
- More emergency services
- Less traffic congestion and gridlock
- Safer pedestrian street crossings and sidewalks
- More recreational facilities, parks and greenspace
- Improved drainage, water & sewer facilities and local roadways



Why Now?

A PENNY
AT WORK



- Existing funding sources have decreased
 - Reduction in available federal funds for transportation and infrastructure improvements
 - Insufficient revenue from property taxes



Projects

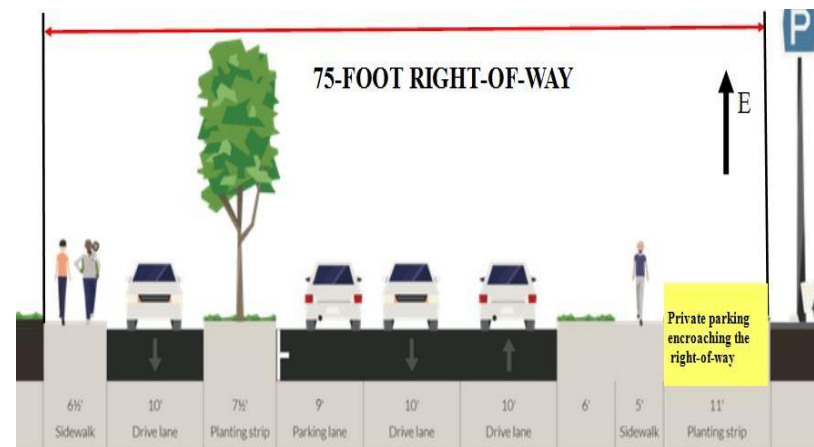
A PENNY
AT WORK



- NE 14 Avenue Roadway and Landscaping Improvements.
- Three Islands Reuse Irrigation.
- Diana Drive Improvements - Provide additional parking spaces, construct sidewalks, landscaping solutions to separate residential from commercial areas and implementing divided traffic on the frontage road and Diana Drive.
- Hibiscus Road - Construction of a new 50-foot roadway to include: two-way travel lanes, sidewalks, landscaping, drainage, right-of-way acquisition.



NE 14th Avenue



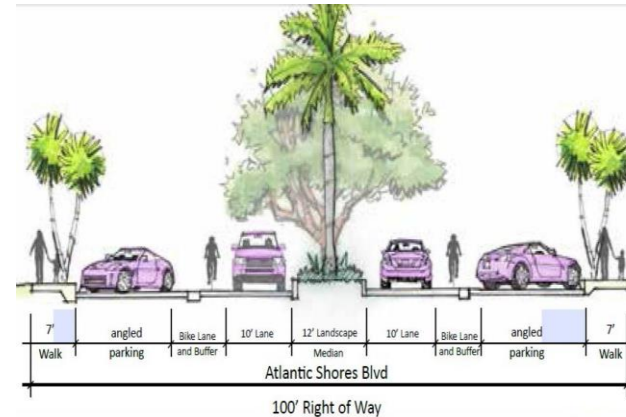
Diana Drive
Improvements

Projects

A PENNY
AT WORK



- Atlantic Shores Blvd. Roadway Improvement - Milling and resurfacing of the road, installing bike lanes, center median, sidewalks and crosswalks, as well as lighting upgrades, landscaping and irrigation improvements.
- Layne Boulevard Sidewalk - Installation of new sidewalk and bike lanes along Layne Boulevard.
- Replacing existing damaged sidewalks - Replacement of existing damaged sidewalks (tripping hazards) throughout the City.
- A1A Bus Shelter Improvements – Replacement of the existing bus shelters along A1A and installation of a new one in front on the South Beach Park.



Atlantic Shores Blvd.



Sidewalk Upgrades

Projects

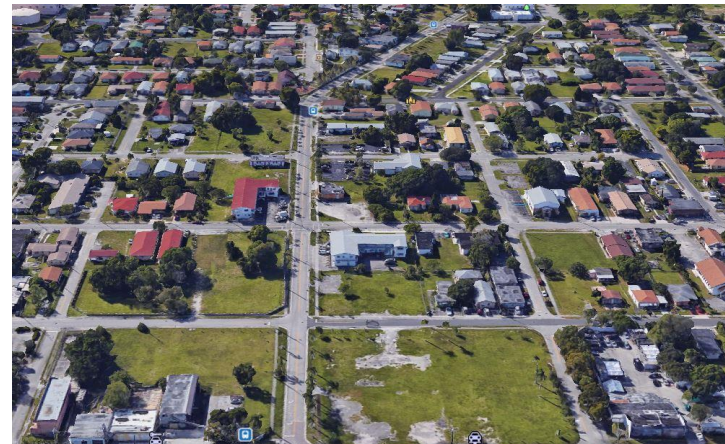
A PENNY
AT WORK



- High Service Pumps and Transfers Pumps – Replacement of existing high service pumps and transfer pumps for the City's water treatment plant.
- SW Quadrant Drainage Improvements - Drainage improvements to the City's Southwest quadrant to alleviate flooding conditions.
- A1A Bridge improvements Bridge improvements - painting the bridge, mural on the north bound east side of bridge to match the south bound, and up lighting under the bridge.
- Foster Road water line upgrade - water main improvements to address fire flow deficiencies at the selected hydrants serving Hallandale High School include the replacement of 3,330 linear feet of existing 4-inch water mains and 6-inch water mains with proposed 8-inch mains.



SW Quadrant Drainage Improvements



Foster Road Water Line upgrade

Projects

A PENNY
AT WORK



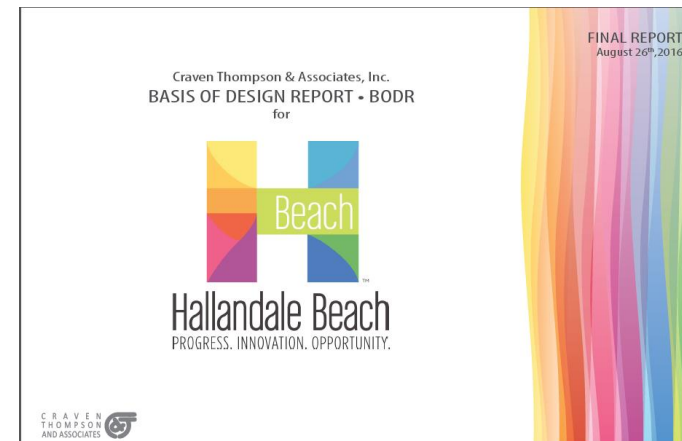
- SE 9 Street - Milling and resurfacing of the road, installing sidewalks, on-street parking, as well as lighting upgrades, landscaping and irrigation improvements.
- SE 5 Avenue and SE 2 Street - Milling and resurfacing of the road, installing sidewalks, on-street parking, as well as lighting upgrades, landscaping and irrigation improvements.
- Crosswalks Upgrades - Testing and rehabilitating textured patterned crosswalks throughout the City.
- Additional projects as identified within the City of Hallandale Beach Basis of Design Report (BODR).



Milling and Resurfacing



Crosswalk Upgrades



Basis of Design Report

Projects

**A PENNY
AT WORK**



- **SAFETY**

- **QUALITY**

- **VIBRANT APPEAL**

- Estimated Project Costs - Investment for the City:

\$ 35,368,955.00

- Basis of Design Report (BODR):

- **\$169,714,618.00**

City-Focused Projects by the County

A PENNY
AT WORK



- **Adaptive Signal Control** – Install intelligent transportation system equipment to create an adaptive signal control environment with transit signal priority functionality along Hallandale Beach Blvd. from I-95 to SR A1A in Hallandale Beach.
- **Bike Lanes/Complete Streets** – Dixie Highway in Hallandale Beach and Hollywood from County Line Road to US-1. Construct bicycle lanes and pedestrian improvements on both sides of street to provide safe alternative modes of transportation.

City-Focused Projects by the County

A PENNY
AT WORK



- **Mast Arm Upgrades** – Foster Rd. at NW 2 Ave. in Hallandale Beach. Convert traffic signals from span wire support to mast arm support to reduce wind-related vulnerability. Also install associated ADA upgrades, resurfacing, and drainage improvements at intersection.
- **Adaptive Signal Control** – Install fiber optics and intelligent transportation system equipment to create an adaptive signal control environment with transit signal priority functionality along US-1 from Broward Blvd. to south county line in Ft. Lauderdale, Dania Beach, Hollywood, and Hallandale Beach.

What's in it for me?

A PENNY
AT WORK



In the **first five years**, the Countywide Transportation Surtax will afford investments in:

- Traffic Congestion Relief/Traffic Flow Improvements, Bike, Pedestrian, Sidewalk, School Safety and Greenways projects;
- Light Rail Infrastructure;
- Rapid bus route expansion; and,
- Bus service in areas not currently served (new routes) and improvements on existing routes (more frequency), as well as 7-day-per-week + longer service hours on many routes.

Transportation Surtax Facts

- Many federal and state grants require us to show local match—a dedicated source of local revenue to cover long-term expenses
- Surtax revenues create the required dedicated funding source
- By 2022, it is expected that \$347M of transportation surtax revenue could leverage approximately **\$1.5B** from federal, state, and local sources

What's Driving the Transportation Surtax?

A PENNY
AT WORK



- 15.4M visitors came to Broward in 2015. Tourism is:
 - expected to increase annually
 - place stress on roads, create traffic congestion, use transit systems
- Gas tax revenues used for transit and road projects are flat or declining.
- Around 50% of the air pollution in Broward County is caused by vehicle emissions.



What happens without a Transportation Surtax?

A PENNY
AT WORK



It is expected that:

- Proposed traffic congestion relief projects will not occur
- Many pedestrian and bicycle safety enhancements will be delayed
- Many bus system enhancements will be delayed
- Light Rail (beyond streetcar in Fort Lauderdale) will not be constructed in the near future



The Countywide Transportation Surtax Offers

A PENNY
AT WORK



- More connectivity across our 31 cities, job centers, and tourism destinations.
- Accelerated traffic congestion relief projects with new technology and innovations.
- More convenient and frequent transit services, 170 new miles of rapid bus, greater service coverage throughout the county, and approximately 14 miles of light rail.
- Safety improvements for motorists, school zones, pedestrians, and bicyclists.
- A local dedicated revenue source, making many transportation projects affordable and achievable.

Livability

Mobility

Air Quality



What is the Surtax?

A PENNY
AT WORK

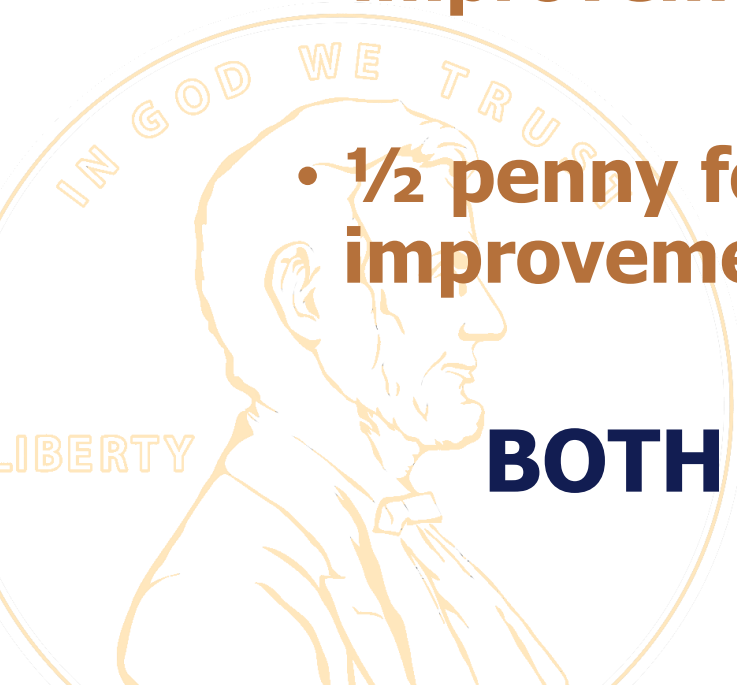


- A 1% sales surtax to fund transportation and infrastructure improvements for 30 years is on the November 8, 2016 ballot.

- **1/2 penny for Countywide transportation improvements**

- **1/2 penny for Local Government infrastructure improvements**

BOTH MUST PASS OR BOTH WILL FAIL



Sales Surtax Distribution

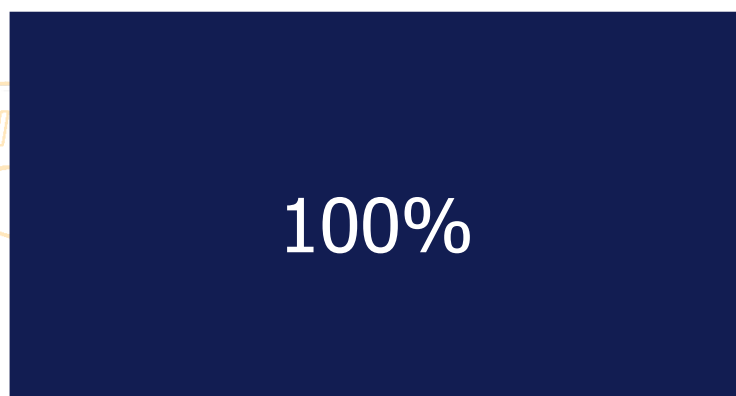
A PENNY
AT WORK



1/2 penny for Transportation

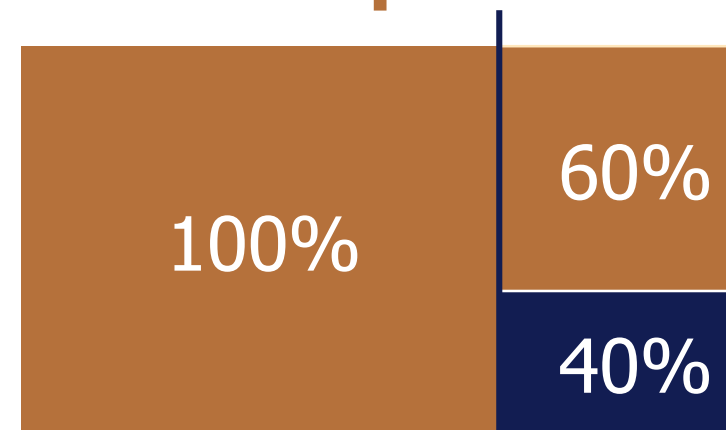
1/2 penny for Infrastructure

Broward County



Years 1-30

Municipalities



Years 1-20

Years 21-30*

*By Interlocal Agreement starting in year 21, 40% of the Infrastructure Sales Surtax will be distributed to Broward County

What's Taxed? What's Not?

A PENNY
AT WORK



- Items Subject to Sales Tax*



- Items **Not** Subject to Sales Tax



*Sales surtax is limited to the first \$5,000 of any single item purchased

*Increase of \$1.00 for every \$100.00 spent

Why Two Ballot Questions?

**A PENNY
AT WORK**



Countywide Transportation

Only used for transportation improvements, including:

- Traffic light synchronization
- Additional transit, more express bus and light rail
- Senior mobility
- Reduce traffic congestion
- Bicycle and sidewalk projects
- Operations and maintenance

Local Government Infrastructure

Only used for capital improvements but for a range of projects, such as:

- Fixing aging pipes
- Local road improvements
- Parks and recreation
- Public safety
- Recreation/conservation land acquisition
- Public buildings

BOTH MUST PASS OR BOTH WILL FAIL

Why Two Ballot Questions?

**A PENNY
AT WORK**



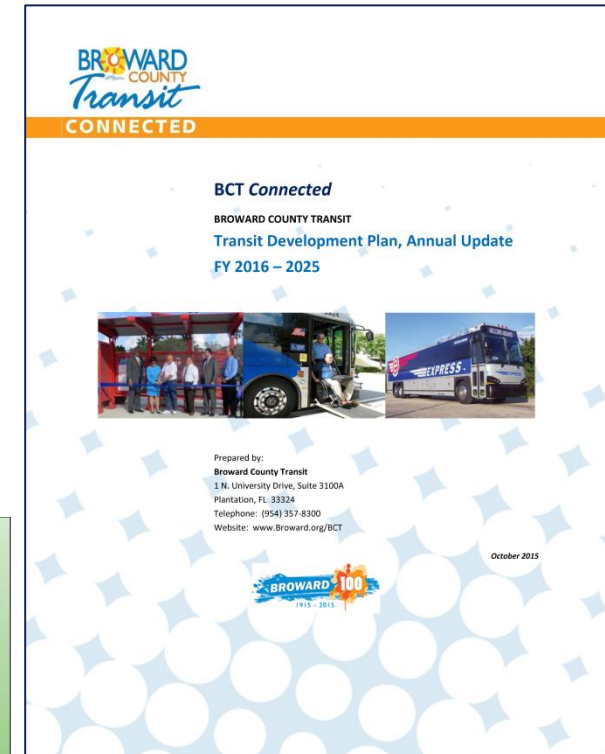
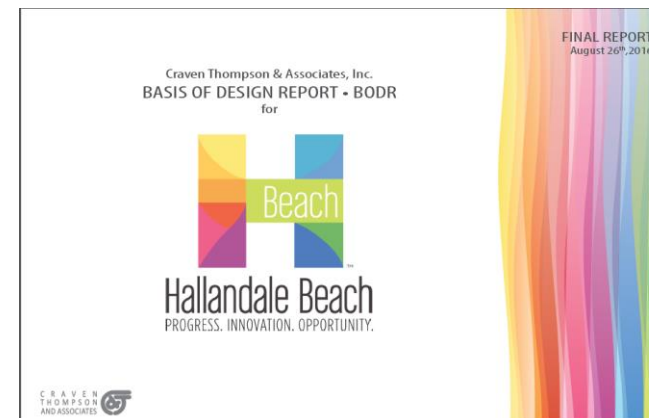
	Countywide Transportation	Local Government Infrastructure
Flood Mitigation, Water Main Repair/Replacement, Storm Water Control		✓
Operations and Maintenance	✓	
Road Construction / Repair	✓	✓
Bridge Construction /Repair	✓	✓
Buses & Rail Vehicles	✓	✓
On Demand Transportation (TOPS & Paratransit) (Capital)	✓	✓
Fixed Guideway (Capital)	✓	✓
Public Building & Facilities (Construction)		✓
Emergency Vehicles (Police, Fire, etc.)		✓
Land Acquisition for Recreation/Conservation		✓

How were projects selected?

A PENNY
AT WORK



- Years of planning and public involvement by Broward County, Broward MPO and Hallandale Beach:
 - Commitment 2040's Long Range Transportation Plan (LRTP)
 - County's Transit Development Plan
 - Transportation Improvement Plan (TIP)
 - City of Hallandale Beach Basis of Design Report (BODR)



Who will supervise the Surtax?

A PENNY
AT WORK

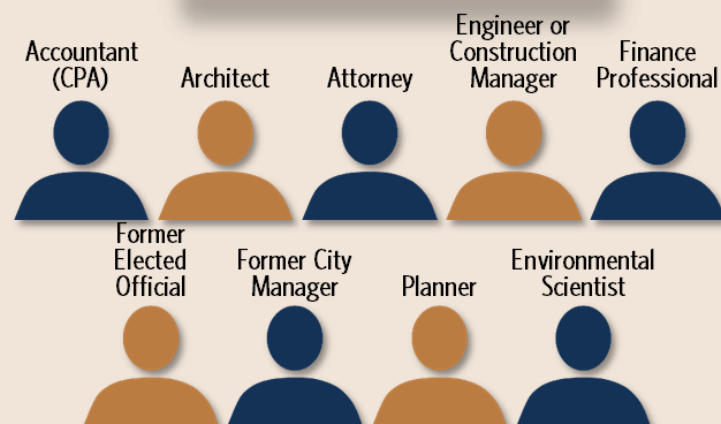


Appointing Authority

- Auditor
- Broward Workshop
- Chamber of Commerce
- FAU Center for Environmental Studies
- Nova Southeastern University

These 5 members
select and appoint the
Oversight Board

Oversight Board



Reviews
Approves
Monitors
Audits



Countywide Transportation Question

A PENNY
AT WORK



FUNDING FOR COUNTYWIDE TRANSPORTATION SYSTEM THROUGH LEVY OF A ONE-HALF PERCENT SALES SURTAX

Shall transportation improvements to reduce traffic congestion, develop rail and enhanced bus systems, improve roads and signalization, and develop safe sidewalks and bicycle pathways, be funded by levying a 30-year, 0.5% sales surtax, paid by residents and visitors, with all proceeds held in trust, expenditures overseen by an independent oversight board, at this levy effective only if the infrastructure surtax ballot question immediately below is voter-approved and in effect?

_____ YES _____ NO

Local Government Infrastructure Question

A PENNY
AT WORK



FUNDING FOR LOCAL GOVERNMENT INFRASTRUCTURE PROJECTS THROUGH LEVY OF A ONE-HALF PERCENT SALES SURTAX.

Shall construction and improvement of public buildings, facilities and roads, transportation projects, pedestrian safety projects, purchase of equipment and public safety vehicles, and recreation/conservation land acquisition, be funded by levying a 30-year, 0.5% sales surtax, paid by residents and visitors, with all proceeds held in trust, expenditures overseen by an independent oversight board, and this levy effective only if the transportation surtax ballot question immediately above is voter-approved and in effect?

____ FOR THE 0.5 CENT SALES TAX

____ AGAINST THE 0.5 CENT SALES TAX

For More Information

**A PENNY
AT WORK**



(Insert City Contact Info Here)

(Insert County Contact Here)

APennyAtWork.com



A PENNY AT WORK

Half Penny (.5%)

To fund the countywide
transportation system



Half Penny (.5%)

To fund your local
improvement projects

VOTE ON NOVEMBER 8
Both must pass or both will fail.

Get the facts on the proposed Penny Sales Tax
www.APennyAtWork.com