



Hallandale Beach Tree Planting Campaign





MISSION

A collective effort to improve our environment for people & nature.

VISION

An engaged community creating sustainable green spaces and building a vibrant tree canopy to equitably strengthen our environment, economy, society, and health.

VALUES


Accountability, Community, Environment, Equity, Fun

CG IS A PROUD MEMBER OF



Trees Provide Ranging Benefits:

- ❖ Cooler Temperatures
- ❖ Reduction in Energy Usage
- ❖ Improved Stormwater Drainage/Reduced Flooding
- ❖ Cleaner Air
- ❖ Mental Health
- ❖ Carbon Storage & Sequestration
- ❖ Biodiversity
- ❖ Habitat for Wildlife
- ❖ Increased Property Value
- ❖ Food Security



WHY THE TIME FOR TREES IS NOW

The necessities of life are at risk. The resources we often take for granted – clean air and water – are compromised. But together we can halt and even reverse the damage done. Trees are the simplest, most affordable and most effective solution to these issues, so if there ever was a time to plant trees, that time is now.

Commitment: We are partnering with the Arbor Day Foundation to help plant 100 million trees in forests and communities worldwide by 2022.

TREES & COMMUNITY

- Safety:** Residents with nearby trees and natural landscapes reported 25% fewer acts of violence.
- Value:** Having large trees along streets increases a home's value by 12%.
- Savings:** Trees reduce U.S. residential energy use by an average of 7.2% – an annual savings of \$100 for an average household.

THE SIZE AND POWER OF 100 MILLION TREES

The Size: 3,500 Central Parks

The Impact: 578,000 tons of chemical pollution removed from the air – enough to fill 70,000 Goodyear blimps

x70,000

A TREE PLANTED TODAY MAKES LIFE BETTER FOR GENERATIONS TO COME.

Healthier Environment	Healthier Economy	Healthier Society
75%		25%
Forests provide 75% of the world's accessible fresh water by removing impurities and preventing erosion.	Forests contribute \$33 trillion to the global economy each year.	1/4 of modern medicine is derived from tropical forest plants, including treatments for diseases like cancer, malaria, and rheumatism.

The **TIME** for **TREES**
An Arbor Day Foundation Initiative

Arbor Day Foundation

For more information, visit timefortrees.org.



CITY

CANOPY %

Hallandale Beach

14%

Boynton Beach

16%

Miami

19%

Delray Beach

23%

Boca Raton

26%

Tampa Bay

32%



CITY

CANOPY %

Atlanta

47%

Baltimore

28%

Pittsburgh

41%

Savannah

44%

Toronto

31%

Washington, DC

35%



CITY

CANOPY %

Atlanta

47%

Baltimore

28%

Pittsburgh

41%

Savannah

44%

Toronto

31%

Washington, DC

35%



Tree Equity: *"ensuring every city neighborhood has enough trees so that every person can benefit from them"*

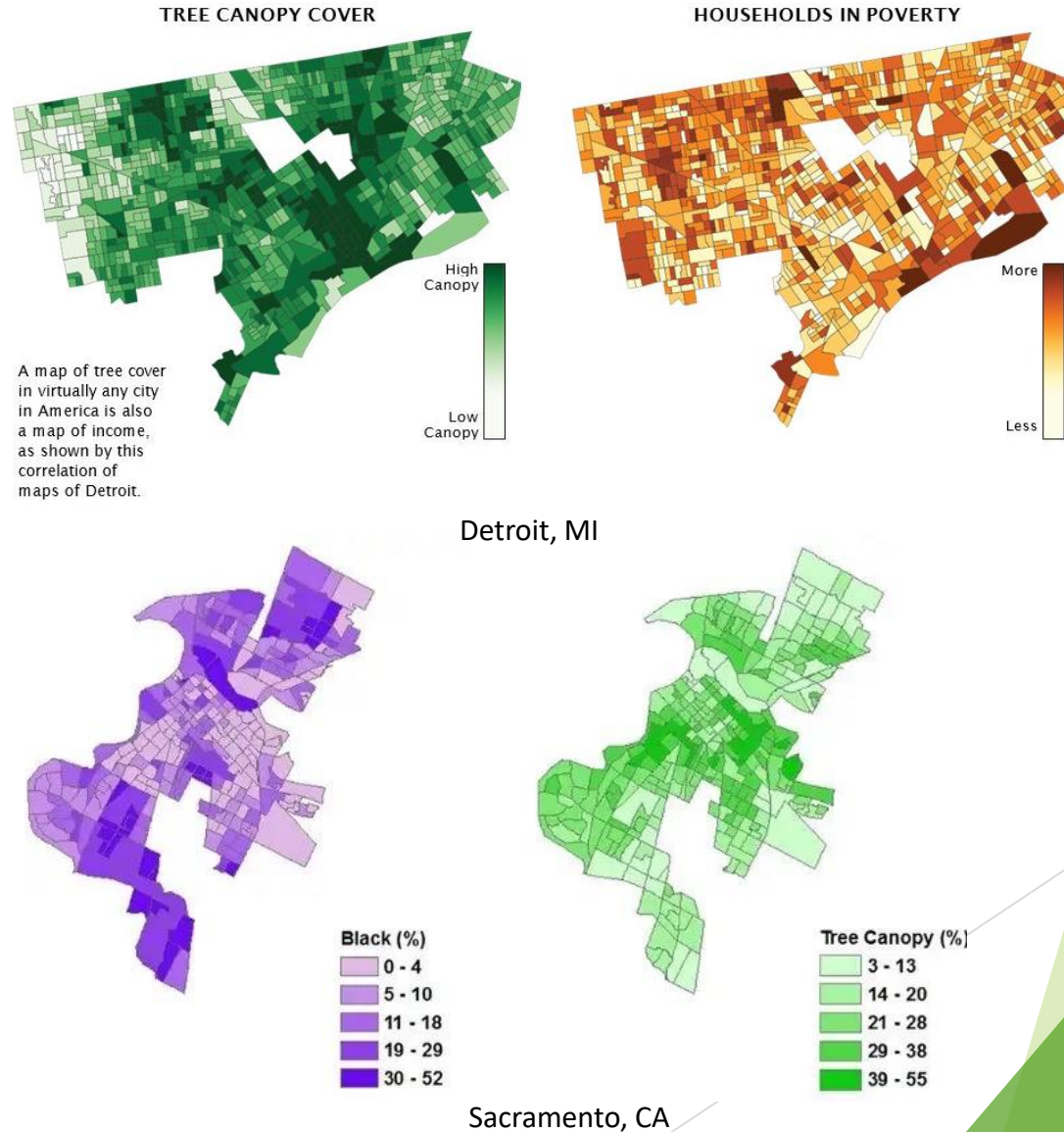
Trees in cities provide health, employment and climate resiliency benefits that everyone should have. They help fulfill our basic needs, such as breathing fresh air and drinking clean water. Trees also cool neighborhoods, which reduces heat-related illnesses and utility costs, and generate wealth by creating tree-related career opportunities. Much like buildings, streets and sewer lines, trees are critical infrastructure that improve our quality of life.

- American Forests | americanforests.org

TREE EQUITY & RACE

Tree Equity is often a map of race & income.

In cities across America, wealthier areas almost always have significantly more trees – and enjoy the benefits that come with them.



<u>City</u>	<u>Canopy</u>	<u>Trees Needed</u>
Delray Beach	23% → 14%	2,000 per year (2020-2025; 10k)
Boynton Beach	16% → 20%	3,000 per year (2020-2035; 45k)
Hallandale Beach	14% → 35%	3,000 per year (2023-2025; 35k)



Urban Orchards: *Vibrant green space that features an assortment of fruit trees, which produce delicious free fruit for the local community to pick. Urban Orchards help address food accessibility, promote health eating, and increase environmental stewardship.*



The Community Grove

Delray Beach, FL

Once an illegal dumping ground, the Community Grove is now a beautiful urban orchard that is enjoyed by local residents.

Created in 2017 through a partnership with TD Green Streets, and numerous local organizations and partners.

The Grove features a variety of fruit species including: Asian persimmon, Avocado, Barbados cherry, Black sapote, Guava, Jack fruit, Lychee, Mamey sapote, Mango, Papaya, Mulberry, Sapodilla, Soursop, Star fruit, and Sugar apple.

CG has planted four Urban Orchards within Palm Beach County.

Park Planting: *Utilizing municipality owned property, parks are an ideal location for plantings to increase tree canopy. New trees will provide valuable shade, helping to increase park usage, they aid in stormwater drainage, provide habitat for wildlife, clean the air & water, and add beauty.*



School Planting: *School campuses offer a great opportunity for large tree plantings. School plantings can also help engage student volunteers & promote environmental stewardship in addition to the environmental benefits - improved stormwater drainage, cleaner air & water, and reduced energy costs.*



City of Delray Beach School Plantings

Just in 2022 alone, Community Greening has added nearly 400 trees school campuses in Delray Beach.

These new trees will help transform the campuses into greener spaces over the years, and bring with it numerous environmental benefits for the students and school district.

Tree Giveaways: *Funded by a local municipality or corporate partner, residents can pick up two free native or fruit trees to plant at their home. Tree Giveaways are an ideal opportunity to increase canopy on private property.*



Tree Giveaway Details:

100-300 trees distributed during a single giveaway event.

Giveaways can be held as a walk-up or drive-thru event.

Typically, 4-8 species are offered - a mix of native & fruit varieties.

Limits of one fruit tree, and two total trees per household to maximize participation.

YOUTH TREE TEAM



YTT: *The Youth Tree Team is a work-force development program, employing local high school students as part-time staff. YTT members get their first work experience by helping to maintain newly planted trees, learning about proper tree care & maintenance, and conducting community outreach. They also participate in environmental enrichment activities to help promote environmental stewardship, as well as discover 'green industry' career possibilities.*



YOUTH TREE TEAM



YTT: *The Youth Tree Team is a work-force development program, employing local high school students as part-time staff. YTT members get their first work experience by helping to maintain newly planted trees, learning about proper tree care & maintenance, and conducting community outreach. They also participate in environmental enrichment activities to help promote environmental stewardship, as well as discover 'green industry' career possibilities.*



TREE TECHNICIANS



YTT: *The Youth Tree Team is a work-force development program, employing local high school students as part-time staff. YTT members get their first work experience by helping to maintain newly planted trees, learning about proper tree care & maintenance, and conducting community outreach.*





TREE PLOTTER

