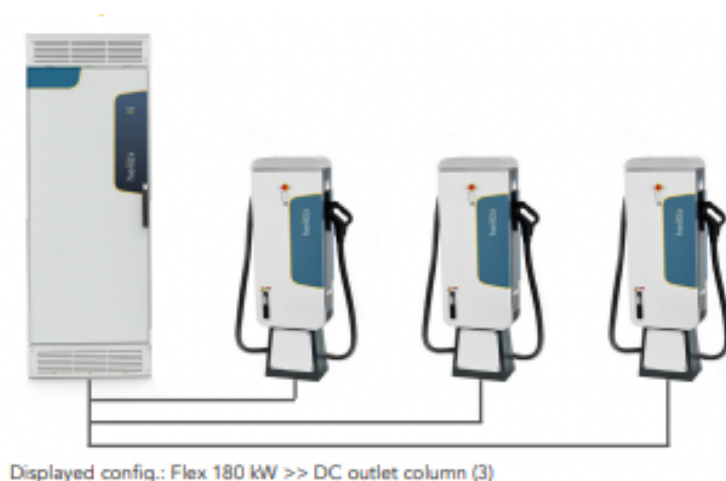


**City of Hallandale Beach**  
**Battery Electric Bus (BEB) Infrastructure**  
**bp pulse (formerly AMPLY)**  
**Scope of Work & Proposal**

**Owner's Rep** for design and planning stages, **EPC** (engineering, procurement and construction) for semi to permanent charging system and **CMS** (charge management system) for operations and support of the future battery electric bus charging system located at Public Work Yard. The semi- permanent charging system will comprise of 3 owner furnished Heliox Flex180 DC chargers with 9 dispensers to service 9 all-electric buses. Once installed within the permanent infrastructure, the charging system will comprise of 4 Heliox Flex180 DC chargers with 12 dispensers to service 12 all electric buses.

**Summary of Products and Services:**

- (i) Work for Hallandale Beach project team and alongside architectural and electrical trades to ensure operational best practices are incorporated into drawings and construction of new maintenance building and charging system
- (ii) Engineer, procure, construct, commission and operate semi- permanent solution called "INRUSH" while permanent charging infrastructure planning and construction takes place
- (iii) Provide charge management software (CMS) for controlling, scheduling, monitoring and reporting of charging activities and system health
- (iv) Provide and manage charger manufacturer extended warranty and service level agreement (SLA), spare parts inventory and supplier triage called bp pulse "ELEVATE"
- (v) Relocate chargers and electrical components from "INRUSH" unit to permanent infrastructure once ready; install, test, commission and operate chargers



### **Owner's Rep**

#### **Design and Planning Consulting:**

- Represent Hallandale Beach's best interests amongst trade contractors to ensure operational focus is maintained during planning and design of permanent charging system
- Attend weekly meetings which include site programming, new utility service from FPL and architectural and electrical design development
- Interface directly with BYD and Heliox teams for technical and practical requirements
- Duration of involvement starts at project kick-off and continues up to CD90s (construction drawings 90%)

### **INRUSH**

#### **Engineering:**

- FP&L new service and meter: coordination, planning and permitting, underground conduit and wiring, permanent infrastructure concrete equipment pads and electrical equipment
- Permit ready and PE stamped construction plans "CD100s"
  - Electrical and civil engineered drawings for INRUSH system deployment at Hallandale Beach DWP Yard
  - Compliance with local AHJ Building and Electrical Code
  - NRTL Field Certified and/ or UL certification as required by the local AHJ



Rough/ basic site plan for semi- permanent solution and permanent FLP transformer and 2000A switchgear. Intended for illustrative purposes

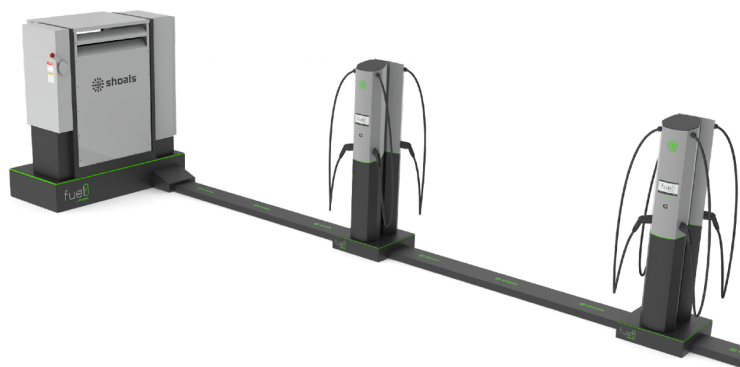
### **Procurement**

- 1500kVa MV transformer and 2000A switchgear, concrete pads and electrical and communication conduit and wiring

- 1 Heliox Flex180 Power Cabinet with 3 dispensers
- Above- ground modular EBOS (electrical balance of system) including
  - Pre-fabricated EVSE cabinet and dispenser base system
  - Enclosed, interlocking cable raceway and conduit branch system
  - Electrical and communication wiring
- Bp pulse Site Controller with dedicated cellular connectivity
- 5 Year Heliox Service Level Agreement (SLA)
  - Extended warranty for a total of 5 years (2 year std warranty included in equipment purchase)
  - Spare parts

### Construction

- Construct, install and connect all customer side electrical equipment to FPL MV system
- Assemble, anchor to parking lot surface and interlocking of semi- permanent INRUSH system
- Interconnection of INRUSH with 3 Heliox Power and 9 dispensers to 2000A switchgear
- Install bus stall striping, wheel stops and informational and instructional signage



Above- ground pre-fabricated balance of system for INRUSH semi-permanent solution

### Relocation to Permanent Infrastructure

- Upon completion of maintenance building, bp pulse will relocate Heliox chargers to permanent infrastructure location
- Removal of all semi-permanent balance of system components
- Total system installation, testing and commission will account for all 4 Heliox Power Cabinets and 12 dispensers

### Charge Management System (CMS)

System Operations and Support:

- Bp pulse “OMEGA” CMS back-end and Command Center UI (user- interface)
- Cloud based platform accessible by desktop and smart devices anywhere
- Fully managed daily charging operations based on business rules including pull-out times, SOC needed for each shift, electric supply and switchgear capacity limits, Time-of-use and demand charge optimization

- Integration with Heliox OCPP and BEB on-board telematics
- Real-time and historical monitoring and reporting
- Bp pulse “ELEVATE” service and support for charging system
  - Extended warranty and 5- year SLA including spare parts kit
  - Remote support for troubleshooting, trouble tickets, resolution planning and supplier triage amongst BYD, Heliox and other potential technology providers

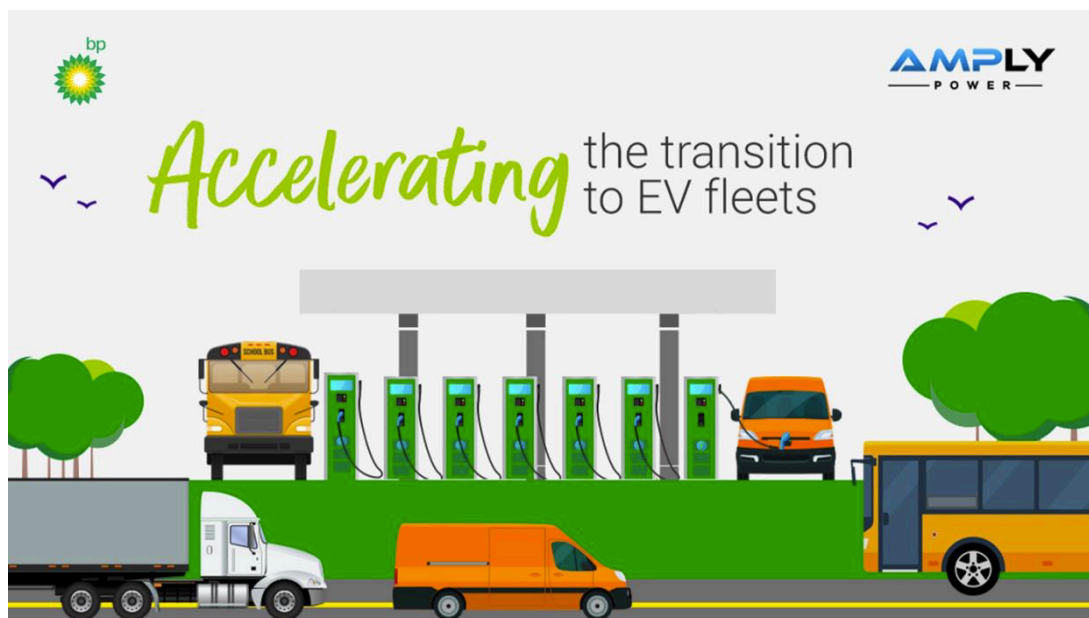
### Estimated Project/ Payment Schedule and Project Quote

| Equipment and Deployment Services              |  |             |                    |
|--|--|-------------|--------------------|
| Milestone                                      | Month                                      | Payment %   | Amount             |
| Contract Execution/ NTP                        | October (2022)                             | 10%         | \$119,673          |
| Material Procurement                           | November                                   | 40%         | \$478,690          |
| Building Permit Obtained                       | April (2022)                               | 20%         | \$239,345          |
| Construction Start                             | July                                       | 10%         | \$119,673          |
| Commercial Operation                           | September                                  | 10%         | \$119,673          |
| Testing, Commissioning,<br>Punchlist Completed | October (2022)                             | 10%         | \$119,673          |
| <b>Total</b>                                   |  | <b>100%</b> | <b>\$1,196,725</b> |
|  |  |             |                    |
|  |  |             |                    |
| AMPLY On-going Services for                    |  |             |                    |
| CMS Annual License Fee                         | Annually beginning on Commerical Operation |             | \$24,852           |
| ELEVATE- Hassle Free<br>Maintenance            |  |             | \$15,320           |
| <b>Total Fees, Annual</b>                      |  |             | <b>\$40,172</b>    |
| <b>Total Fees, 5Years</b>                      |  |             | <b>\$200,860</b>   |
|  |  |             |                    |
|  |  |             |                    |
| Relocation Services                            |  |             |                    |
| Relocate Chargers                              | October (2024)                             | 100%        | \$51,276           |
| <b>Total</b>                                   |  |             | <b>\$51,276</b>    |

## Bp pulse (formerly AMPLY) Overview

AMPLY Power, Inc. has a unique status as BYD's preferred partner for EV infrastructure and energy services, as [announced in 2019](#). The AMPLY solution is fully integrated with BYD buses and chargers, and is interoperable with all other BEB OEMs as the fleet grows and utilizes charging infrastructure across multiple charging systems and depots.

AMPLY brings together a Team with a wealth of experience, both technically and from a successful business history. The combined technical experience in electricity, utility interconnection, EVSE charging hardware infrastructure, and cloud computing is the exact skill set needed to solve the issues fleet owners face when electrifying their fleets.



In December 2021, we announced that AMPLY Power was acquired by bp. This acquisition is a significant milestone for our company, marking a step-change in our growth path, while maintaining our customer focused delivery. AMPLY Power will continue to operate as a distinct entity. Together, AMPLY Power is well positioned for a new scale of innovation, expansion, and fleet electrification projects.

From concept and design, to permitting, project management and construction, through commissioning and on-going operations, AMPLY provides turnkey EV charging solutions for medium and heavy duty fleet operators across the US. With intelligent software and an innovative support model, we are able to de-risk fleet electrification so operators can remain focused on their core business of moving people or goods.

AMPLY OMEGA is a cloud-based, multi-tenant system that allows AMPLY to monitor our customer fleets, with the security of individual customer encryption and customer data ownership. The AMPLY OMEGA system includes a dashboard, OMEGA Command Center, allowing the fleet operator to view in real-time the EV charging processes in action, day or night. It can be viewed from any web browser and is optimized for mobile devices such as iPad to allow a roaming supervisor to get up-to-the second information while on the move.

|  |   |  |             |  |                        |              |
|--|---|--|-------------|--|------------------------|--------------|
| Quote#   |   | Hallandale Beach- DPW BEB Facility   |             | <div><div>AMPLY</div><div>FLEET CHARGING SIMPLIFIED</div></div>      |                        |              |
| Date:  |   | 8/23/22  |             |  |                        |              |
| Valid for:   |   | 45 days from "Date"  |             |  |                        |              |
|  |   |  |             |  |                        |              |
| AMPLY is pleased to deliver this Quotation to:   |   |  |             | FROM:  |                        |              |
| Company:   | City of Hallandale Beach  |  | Company:    | AMPLY Power, Inc.  |                        |              |
| Contact:   | Peter Kunen   |  | Contact:    | Jeff Palmer  |                        |              |
| Email:   | <a href="mailto:pkunen@hallandalebeachfl.gov">pkunen@hallandalebeachfl.gov</a>  |  | Email:      | <a href="mailto:jpalmer@amplypower.com">jpalmer@amplypower.com</a>   |                        |              |
| Phone:   | (954) 457-3042  |  | Phone:      |  |                        |              |
| Attn:  |   |  | Attn:       | Accounts Receivable  |                        |              |
| Attn Email:  |   |  | Attn Email: | <a href="mailto:billings@amplypoewr.com">billings@amplypoewr.com</a> |                        |              |
| Address:   | 630 NW 2nd St   |  | Address:    | 335 E. Middlefield Rd  |                        |              |
|  | Hallandale Beach, FL 33009  |  |             | Mountain View, CA 94043  |                        |              |
|  |   |  |             |  |                        |              |
|  |   |  |             |  |                        |              |
| Project Name:  | City of Hallendale Beach  |  |             |  |                        |              |
| Description:   | AMPLY Design and Planning Services  |  |             |  |                        |              |
|  | Provide OMEGA Charge Management Software (CMS) licenses on an annual basis for all controlled chargers                            |  |             |  |                        |              |
|  | Integrate and configure customer's telematics software to OMEGA   |  |             |  |                        |              |
|  | AMPLY to provide 1 Heliox 180Flex Power Cabinet and 3 Heliox 250A Dispensers and AMPLY Site Controller                            |  |             |  |                        |              |
|  | Customer will provide 3 Heliox 180Flex Power Cabinets and 9 Heliox 250A Dispensers to be installed by AMPLY                       |  |             |  |                        |              |
|  | Install semi-permanent INRUSH raceway and mounting platforms and Heliox EVSE for use until permanent infrastructure is completed. |  |             |  |                        |              |
|  | Relocate Heliox EVSE to permanent infrastructure when completed and remove INRUSH semi-permanent material.                        |  |             |  |                        |              |
|  | Install new Utility Medium Voltage 1500kVA transformer, 2000A 480V Switchgear, and all required balance of system equipment       |  |             |  |                        |              |
|  | 5 Year Parts and Labor SLA and AMPLY ELEVATE Hassle Free Maintenance for all Heliox EVSE with spare parts inventory               |  |             |  |                        |              |
| Pricing Excludes: Shipping costs to be calculated at time of shipment and paid out of Contingency at actual shipping cost. |   |  |             |  |                        |              |
| Quotation  |   |  |             |  |                        |              |
| Equipment  |   |  |             |  |                        |              |
| Line#  | Part#   | Description  | Qty         | Unit Price   | Unit Type              | Total (US\$) |
| 1.1  | AMP-ASC   | AMPLY Site Controller  | 1           |  | Equipment              |              |
| 1.2  | AMP-INRUSH  | Surface mount raceway and mounting platforms for EVSE  | 1           |  | Equipment              |              |
| 1.3  | SWGR-2000-480   | Switchgear 2000A (3PH 480V) and Transformer (1500kVA, 13.2kV-480V)   | 1           |  | Equipment              |              |
| 1.4  | EVSE-HLX-PC-180   | Heliox - EVSE - DCFC 180kW Power Cabinet   | 1           |  | Equipment              |              |
| 1.5  | EVSE-HLX-DIS-250  | Heliox - EVSE - DCFC 250A CCS1 Dispenser   | 3           |  | Equipment              |              |
| 1.6  | WARR-HLX-PC-5PL   | Heliox - EVSE - Power Cabinet 5-Year SLA   | 4           |  | Equipment              |              |
| 1.7  | WARR-HLX-DIS-5PL  | Heliox - EVSE - Dispenser 5-Year SLA   | 12          |  | Equipment              |              |
| 1.8  | WARR-HLX-SPARE  | Heliox - EVSE - Spare Parts Kit - 250A Cable + CCS1 Assembly   | 2           |  | Equipment              |              |
| SUB TOTAL:   |   |  |             |  |                        | \$722,285    |
| SALES TAX*   |   |  |             |  |                        | excluded     |
| EQUIPMENT TOTAL:   |   |  |             |  |                        | \$722,285    |
| * Sales Tax excluded from quotation; Customer liable for sales taxes where applicable.                                     |   |  |             |  |                        |              |
|  |   |  |             |  |                        |              |
| Install and Deployment Services  |   |  |             |  |                        |              |
| Line#  | Part#   | Description  | Qty         | Unit Price   | Unit Type              | Total (US\$) |
| 2.1  | AMP-PM  | AMPLY Project Management and Utility Coordination Service  | 1           |  | Services               |              |
| 2.2  | AMP-PM  | AMPLY Owner's Rep Blue Print Service @ \$200/hr  | 1           |  | Services               |              |
| 2.3  | AMP-ENG   | AMPLY Site Survey, Design, Engineering, Permitting Services  | 1           |  | Services               |              |
| 2.4  | AMP-EPC   | AMPLY Construction & Installation Services - EVSE and Balance of System  | 1           |  | Services & Material    |              |
| 2.5  | EVSE-HLX-PC-CONF  | Heliox - EVSE - DCFC Commissioning and Configuration - Power Cabinet   | 4           |  | Services               |              |
| 2.6  | EVSE-HLX-DIS-CONF   | Heliox - EVSE - DCFC Commissioning and Configuration - Dispenser   | 12          |  | Services               |              |
| 2.7  | AMP-CONF-V  | Telematics Configuration to OMEGA - per Vehicle  | 12          |  | Services               |              |
| 2.8  | AMP-CONF-C  | EVSE Configuration and Commissioning to OMEGA - per EVSE   | 12          |  | Services               |              |
| SUB TOTAL:   |   |  |             |  |                        | \$474,440    |
| SALES TAX:   |   |  |             |  |                        | excluded     |
| INSTALLATION AND PROJECT MANAGEMENT TOTAL:   |   |  |             |  |                        | \$474,440    |
| EQUIPMENT AND DEPLOYMENT TOTAL:  |   |  |             |  |                        | \$1,196,725  |
| 2.10   | AMP-CONT  | Customer Required Contingency - 20% of Total Project Cost<br><i>note: this will only be billed against as needed</i> | 1           | \$239,350  | Contingency            | \$239,350    |
| NOT TO EXCEED EQUIPMENT AND DEPLOYMENT TOTAL:  |   |  |             |  |                        | \$1,436,075  |
| * Sales Tax excluded from quotation; Customer liable for sales taxes where applicable.                                     |   |  |             |  |                        |              |
|  |   |  |             |  |                        |              |
| Annual License Fees  |   |  |             |  |                        |              |
| Line#  | Part#   | Description  | Qty         | Unit Price   | Unit Type              | Total (US\$) |
| 3.1  | AMP-OMEGA-HD-5  | OMEGA Annual License (Heavy Duty)  | 12          |  | 5 Year License Pre-Pay |              |
| 3.2  | AMP-HFM-5   | ELEVATE Hassle Free Maintenance (Heliox Power Cabinet)   | 4           |  | 5 Year License         |              |
| 3.3  | AMP-HFM-5   | ELEVATE Hassle Free Maintenance (Heliox Dispenser)   | 12          |  | 5 Year License         |              |
| SUB TOTAL:   |   |  |             |  |                        | \$200,860    |
| SALES TAX:   |   |  |             |  |                        | \$0          |
| ANNUAL LICENSES TOTAL:   |   |  |             |  |                        | \$200,860    |
| ** Annual License fees assume no LCFS credits; no utility energy costs included  |   |  |             |  |                        |              |

|                     |          |  |     |            |                     |              |
|---------------------|----------|--|-----|------------|---------------------|--------------|
| Relocation Services |          |  |     |            |                     |              |
| Line#               | Part#    | Description  | Qty | Unit Price | Unit Type           | Total (US\$) |
| 4.1                 | AMP-EPC  | AMPLY Construction & Installation Services - Relocate EVSE to Permanent Infrastructure                               | 1   |            | Services & Material |              |
| 4.2                 | AMP-CONT | Customer Required Contingency - 20% of Total Project Cost<br><i>note: this will only be billed against as needed</i> | 1   |            | Contingency         |              |
| SUB TOTAL:          |          |  |     |            |                     | \$51,276     |
| SALES TAX:          |          |  |     |            |                     | excluded     |
| RELOCATION TOTAL:   |          |  |     |            |                     | \$51,276     |





# ELEVATE™ | Hassle-Free Maintenance

Prioritizing the Health of Your Charging Equipment



## 99.9% Service-Level Guarantee

Our Hassle-Free Maintenance offers a service level agreement—our guarantee to you that your EVs are charged and ready to go 99.9% of the time.



## Issue Identification & Resolution

End-to-end support for charging equipment issues – from initial triage through final retest. We offer critical issue management and communications, including identifying alternative action pathways, so you can focus on operations.



## Beyond Preventative Maintenance

In addition to monitoring preventative maintenance schedules, our artificial intelligence and machine learning enabled OMEGA platform provides predictive maintenance and predictive repair based on learned usage of your equipment.



## Managing Warranties & Equipment Reserves

If issues with your charging operations arise, we work directly with the charger manufacturers to seamlessly repair/replace equipment under warranty. We also consign and leverage spare parts to keep your EV fleet fully operational.



## Cost-Effectively Prolonging Equipment Lifespan

ELEVATE ensures the useful life of your equipment is maximized, while minimizing costly repairs. This means less time downtime, fewer replacements, and long-term cost savings.



## ELEVATE: How Does It Work?

ELEVATE is a service offering that goes beyond standard warranties and maintenance programs offered by EVSE providers, giving fleets peace of mind that their EV charging infrastructure ecosystem is consistently up and running. ELEVATE, paired with OMEGA, our intelligent charge management system, automatically notifies our Network Operations Center when potential issues arise in your charging operations, initiating problem resolution day or night.



### Triage

We'll immediately assess any alerts or errors and begin the problem resolution process.



### Ticketing

OMEGA generates and tracks a ticket for each incident and measures acknowledgment, response, and resolution times.



### Troubleshoot

We'll immediately investigate identified issues through remote troubleshooting of software, API, and hardware components.



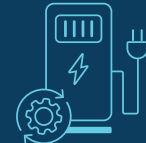
### Dispatch

Should remote troubleshooting not suffice, we'll send ground support to your site.



### Repair

For equipment that needs repair, we'll deploy certified technicians to ensure faulty hardware is fixed promptly.



### Replace

If a replacement is needed, we'll work to keep your operations going, via warranties, equipment spares, temporary chargers, etc.



### Retest

Once your repaired or replaced hardware is installed, we'll run necessary testing to ensure full functionality.



### Report

Incident data and resolution timelines are then aggregated into monthly health reports.



### Retire

For equipment that has been obsoleted by the OEM, we'll manage the end-of-life disposal or recycling process.

## Let's Electrify Together.

✉ [hello@amplypower.com](mailto:hello@amplypower.com)

🌐 [amplypower.com](https://amplypower.com)

📍 335 E Middlefield Rd,  
Mountain View, CA  
94043, USA