



HALLANDALE CITY CENTER

Preliminary Construction Schedule

ID	Task	Task Name	Duration	Start	Finish	Predecessors
1		HALLANDALE CITY CENTER	524 days	Mon 10/3/22	Thu 10/3/24	
2		SITE WORK	468 days	Mon 10/3/22	Wed 7/17/24	
3		Building Permit	1 day	Mon 10/3/22	Mon 10/3/22	
4		MOT Road Closure	10 days	Tue 10/4/22	Mon 10/17/22	3
5		Clearing & Grubbing	10 days	Tue 10/18/22	Mon 10/31/22	4
6		Drainage Wells Permit	1 day	Mon 10/3/22	Mon 10/3/22	3SS
7		Drinage Wells Install	7 days	Tue 10/4/22	Wed 10/12/22	6
8		Drainage System	60 days	Thu 10/13/22	Wed 1/4/23	7
9		Water & Sewer	30 days	Thu 1/5/23	Wed 2/15/23	8
10		Grading Earthwork & Building Pads	15 days	Tue 11/1/22	Mon 11/21/22	5
11		Sidewalks & 1st lift Asphalt	20 days	Tue 11/21/23	Mon 12/18/23	145
12		2nd Lift Asphalt & Striping	10 days	Tue 12/19/23	Mon 1/1/24	11
13		Engineering Final Inspection	1 day	Tue 1/2/24	Tue 1/2/24	12
14		Utility Connections (WASA)	5 days	Wed 1/3/24	Tue 1/9/24	13
15		Water Main	5 days	Wed 1/10/24	Tue 1/16/24	14
16		FP&L Pad Mounted Transformers	120 days	Tue 10/4/22	Mon 3/20/23	3
17		Landscaping & Irrigation	35 days	Thu 5/30/24	Wed 7/17/24	140,82
18		BUILDING - BLOCKS A,B & C	488 days	Tue 11/22/22	Thu 10/3/24	
19		BLOCKS C	488 days	Tue 11/22/22	Thu 10/3/24	
20		CONCRETE STRUCTURE	225 days	Tue 11/22/22	Mon 10/2/23	
21		Foundation	30 days	Tue 11/22/22	Mon 1/2/23	10
22		Ground Floor Verticals 1st Lift	10 days	Tue 1/3/23	Mon 1/16/23	21
23		Ground Floor Verticals 2nd Lift	10 days	Tue 1/17/23	Mon 1/30/23	22
24		2nd Floor Joists & Deck - 1st Pour	15 days	Tue 1/31/23	Mon 2/20/23	23
25		2nd Floor Joists & Deck - 2nd Pour	15 days	Tue 2/21/23	Mon 3/13/23	24
26		2nd Floor Verticals - 1st Lift	7 days	Tue 3/14/23	Wed 3/22/23	25
27		2nd Floor Verticals - 2nd Lift	7 days	Thu 3/23/23	Fri 3/31/23	26
28		3rd Floor Joists & Deck - 1st Pour	15 days	Mon 4/3/23	Fri 4/21/23	27
29		3rd Floor Joists & Deck - 2nd Pour	15 days	Mon 4/24/23	Fri 5/12/23	28
30		3rd Floor Verticals - 1st Lift	7 days	Mon 5/15/23	Tue 5/23/23	29
31		3rd Floor Verticals - 2nd Lift	7 days	Wed 5/24/23	Thu 6/1/23	30
32		4th Floor Joists & Deck - 1st Pour	15 days	Fri 6/2/23	Thu 6/22/23	31
33		4th Floor Joists & Deck - 2nd Pour	15 days	Fri 6/23/23	Thu 7/13/23	32
34		Roof Overpours	15 days	Fri 7/14/23	Thu 8/3/23	33
35		Shoring Removal 2nd to 3rd Floor	5 days	Tue 7/25/23	Mon 7/31/23	33FS+7 days
36		Shoring Removal 3rd to 4th Floor	5 days	Tue 8/1/23	Mon 8/7/23	35
37		Shoring Removal Ground Floor	5 days	Tue 8/8/23	Mon 8/14/23	36
38		2nd Floor Masonry Infill	10 days	Tue 8/1/23	Mon 8/14/23	35
39		3rd Floor Masonry Infill	10 days	Tue 8/8/23	Mon 8/21/23	36
40		Roof Masonry Infill / parapets	5 days	Tue 8/22/23	Mon 8/28/23	39
41		Ground Floor Masonry Infill	10 days	Tue 8/29/23	Mon 9/11/23	40
42		Flat Concrete Under Building	15 days	Tue 9/12/23	Mon 10/2/23	41
43		INTERIOR ROUGHS	91 days	Thu 6/8/23	Thu 10/12/23	
44		Layout, Framing and Stocking	32 days	Fri 7/14/23	Mon 8/28/23	
45		Stock Door Frames	3 days	Fri 7/14/23	Tue 7/18/23	33
46		2nd Floor	10 days	Tue 8/1/23	Mon 8/14/23	35
47		3rd Floor	10 days	Tue 8/8/23	Mon 8/21/23	36
48		Ground Floor	10 days	Tue 8/15/23	Mon 8/28/23	37
49		Fire Sprinkler Rough	24 days	Tue 8/15/23	Fri 9/15/23	
50		2nd Floor	8 days	Tue 8/15/23	Thu 8/24/23	46
51		3rd Floor	8 days	Fri 8/25/23	Tue 9/5/23	50
52		Ground Floor	8 days	Wed 9/6/23	Fri 9/15/23	51
53		HVAC Ductwork & Piping	91 days	Thu 6/8/23	Thu 10/12/23	
54		Roof Curbs & Goose Necks	5 days	Thu 6/8/23	Wed 6/14/23	32SS+4 days
55		2nd Floor	10 days	Fri 8/18/23	Thu 8/31/23	50SS+3 days
56		3rd Floor	10 days	Fri 9/1/23	Thu 9/14/23	55
57		Ground Floor	10 days	Fri 9/15/23	Thu 9/28/23	56
58		HVAC Roof Equipment	10 days	Fri 9/29/23	Thu 10/12/23	57
59		Plumbing Rough	71 days	Thu 6/8/23	Thu 9/14/23	
60		Roof Vents	5 days	Thu 6/8/23	Wed 6/14/23	54SS
61		2nd Floor	13 days	Tue 8/15/23	Thu 8/31/23	46
62		3rd Floor	7 days	Fri 8/25/23	Mon 9/4/23	61SS+8 days



HALLANDALE CITY CENTER

Preliminary Construction Schedule

ID	Task	Task Name	Duration	Start	Finish	Predecessors
63		Ground Floor	7 days	Wed 9/6/23	Thu 9/14/23	62SS+8 days
64		Electrical, Alarm & LV Conduit & Box	26 days	Tue 8/15/23	Tue 9/19/23	
69		ENVELOPE & EXTERIORS	205 days	Tue 8/15/23	Mon 5/27/24	
70		Glazing	55 days	Tue 8/15/23	Mon 10/30/23	
71		2nd Floor	15 days	Tue 8/15/23	Mon 9/4/23	38
72		3rd Floor	15 days	Tue 8/22/23	Mon 9/11/23	39
73		Ground Floor	20 days	Tue 10/3/23	Mon 10/30/23	42
74		Roofing: Waterproofing & Insulation	20 days	Tue 8/29/23	Mon 9/25/23	40
75		Exterior Doors	20 days	Tue 10/3/23	Mon 10/30/23	42
76		Stucco	80 days	Tue 10/31/23	Mon 2/19/24	
77		North Face	20 days	Tue 10/31/23	Mon 11/27/23	73
78		East Face	20 days	Tue 11/28/23	Mon 12/25/23	77
79		South Face	20 days	Tue 12/26/23	Mon 1/22/24	78
80		West Face	20 days	Tue 1/23/24	Mon 2/19/24	79
81		Handrails & Guard Rails	20 days	Tue 2/20/24	Mon 3/18/24	80
82		Exterior Aluminum Screen	40 days	Tue 4/2/24	Mon 5/27/24	83
83		Exterior Painting	30 days	Tue 2/20/24	Mon 4/1/24	80
84		General Signage & Specialties	20 days	Thu 4/18/24	Wed 5/15/24	83,140SS
85		FINISHES & TRIM	186 days	Tue 10/31/23	Tue 7/16/24	
86		Framing Inspection & Insulation	21 days	Tue 10/31/23	Tue 11/28/23	44
87		2nd Floor	7 days	Tue 10/31/23	Wed 11/8/23	73,74
88		3rd Floor	7 days	Thu 11/9/23	Fri 11/17/23	87
89		Ground Floor	7 days	Mon 11/20/23	Tue 11/28/23	88
90		Hang Drywall	45 days	Thu 11/9/23	Wed 1/10/24	44
91		2nd Floor	15 days	Thu 11/9/23	Wed 11/29/23	87
92		3rd Floor	15 days	Thu 11/30/23	Wed 12/20/23	91
93		Ground Floor	15 days	Thu 12/21/23	Wed 1/10/24	92
94		Finish Drywall	45 days	Thu 11/30/23	Wed 1/31/24	
95		2nd Floor	15 days	Thu 11/30/23	Wed 12/20/23	91,87
96		3rd Floor	15 days	Thu 12/21/23	Wed 1/10/24	95
97		Ground Floor	15 days	Thu 1/11/24	Wed 1/31/24	96
98		Install Interior Doors	40 days	Thu 12/21/23	Wed 2/14/24	
99		2nd Floor	10 days	Thu 12/21/23	Wed 1/3/24	95
100		3rd Floor	10 days	Thu 1/11/24	Wed 1/24/24	96
101		Ground Floor	10 days	Thu 2/1/24	Wed 2/14/24	97
102		Interior Painting	45 days	Thu 1/4/24	Wed 3/6/24	
103		2nd Floor	15 days	Thu 1/4/24	Wed 1/24/24	99
104		3rd Floor	15 days	Thu 1/25/24	Wed 2/14/24	100
105		Ground Floor	15 days	Thu 2/15/24	Wed 3/6/24	101
106		Wall & Flooring Tile	60 days	Thu 1/25/24	Wed 4/17/24	
107		2nd Floor	20 days	Thu 1/25/24	Wed 2/21/24	103
108		3rd Floor	20 days	Thu 2/22/24	Wed 3/20/24	107
109		Ground Floor	20 days	Thu 3/21/24	Wed 4/17/24	108
110		Kitchen & Bathroom Cabinets	55 days	Thu 2/22/24	Wed 5/8/24	
111		2nd Floor	15 days	Thu 2/22/24	Wed 3/13/24	107
112		3rd Floor	15 days	Thu 3/21/24	Wed 4/10/24	108
113		Ground Floor	15 days	Thu 4/18/24	Wed 5/8/24	109
114		Kitchen Appliances	45 days	Thu 3/14/24	Wed 5/15/24	
115		2nd Floor	5 days	Thu 3/14/24	Wed 3/20/24	111
116		3rd Floor	5 days	Thu 4/11/24	Wed 4/17/24	112
117		Ground Floor	5 days	Thu 5/9/24	Wed 5/15/24	113
118		Electrical Fixtures & Trim	104 days	Thu 2/22/24	Tue 7/16/24	
119		2nd Floor	28 days	Thu 2/22/24	Mon 4/1/24	107
120		3rd Floor	28 days	Tue 4/2/24	Thu 5/9/24	119
121		Ground Floor	28 days	Fri 5/10/24	Tue 6/18/24	120
122		Roof	20 days	Wed 6/19/24	Tue 7/16/24	121
123		Plumbing Fixtures	60 days	Thu 2/22/24	Wed 5/15/24	
124		2nd Floor	20 days	Thu 2/22/24	Wed 3/20/24	107
125		3rd Floor	20 days	Thu 3/21/24	Wed 4/17/24	124
126		Ground Floor	20 days	Thu 4/18/24	Wed 5/15/24	125
127		Fire Sprinkler Trim	45 days	Thu 2/22/24	Wed 4/24/24	
128		2nd Floor	15 days	Thu 2/22/24	Wed 3/13/24	107



HALLANDALE CITY CENTER

Preliminary Construction Schedule

ID		Task	Task Name	Duration	Start	Finish	Predecessors
129			3rd Floor	15 days	Thu 3/14/24	Wed 4/3/24	128
130			Ground Floor	15 days	Thu 4/4/24	Wed 4/24/24	129
131			Fire Alarm & Low Voltage Trim	60 days	Thu 2/22/24	Wed 5/15/24	
132			2nd Floor	20 days	Thu 2/22/24	Wed 3/20/24	119SS
133			3rd Floor	20 days	Thu 3/21/24	Wed 4/17/24	132
134			Ground Floor	20 days	Thu 4/18/24	Wed 5/15/24	133
135			HVAC Trim	60 days	Thu 2/22/24	Wed 5/15/24	
136			2nd Floor	20 days	Thu 2/22/24	Wed 3/20/24	107
137			3rd Floor	20 days	Thu 3/21/24	Wed 4/17/24	136
138			Ground Floor	20 days	Thu 4/18/24	Wed 5/15/24	137
139			HVAC Startup	15 days	Thu 5/16/24	Wed 6/5/24	135
140			Bath Accessories	30 days	Thu 4/18/24	Wed 5/29/24	106
141			EQUIPMENT	150 days	Tue 4/25/23	Mon 11/20/23	
142			Elevators System: Tower	150 days	Tue 4/25/23	Mon 11/20/23	
143			Elevator System: Shop Drawings and Approval	40 days	Tue 4/25/23	Tue 6/20/23	144SF
144			Elevator System: Manufacture & Shipping	70 days	Tue 6/20/23	Tue 9/26/23	145SF
145			Elevator System: Installation	40 days	Tue 9/26/23	Mon 11/20/23	74
146			FINAL INSPECTIONS	228 days	Tue 11/21/23	Thu 10/3/24	
147			Fire	20 days	Fri 8/9/24	Thu 9/5/24	148,149,152
148			Mechanical	17 days	Thu 5/16/24	Fri 6/7/24	135
149			Plumbing	17 days	Thu 5/16/24	Fri 6/7/24	123
150			Building	20 days	Fri 9/6/24	Thu 10/3/24	147
151			Elevators	20 days	Tue 11/21/23	Mon 12/18/23	145
152			Electrical	17 days	Wed 7/17/24	Thu 8/8/24	118,131
153			BLOCK A	246 days	Mon 4/24/23	Mon 4/1/24	
154			CONCRETE STRUCTURE	105 days	Mon 4/24/23	Fri 9/15/23	
155			Foundation	25 days	Mon 4/24/23	Fri 5/26/23	28
156			Ground Floor Verticals 1st Lift	5 days	Mon 5/29/23	Fri 6/2/23	155
157			Ground Floor Verticals 2nd Lift	5 days	Mon 6/5/23	Fri 6/9/23	156
158			2nd Floor Shoring / Decking - 1st Pour	7 days	Mon 6/12/23	Tue 6/20/23	157
159			2nd Floor Shoring / Decking - 2nd Pour	7 days	Wed 6/21/23	Thu 6/29/23	158
160			2nd Floor Verticals - 1st Lift	5 days	Fri 6/30/23	Thu 7/6/23	159
161			2nd Floor Verticals - 2nd Lift	5 days	Fri 7/7/23	Thu 7/13/23	160
162			Roof Shoring / Decking - 1st Pour	7 days	Fri 7/14/23	Mon 7/24/23	161
163			Roof Shoring / Decking - 2nd Pour	7 days	Tue 7/25/23	Wed 8/2/23	162
164			Roof Overpours	5 days	Thu 8/3/23	Wed 8/9/23	163
165			Shoring Removal 2nd to Roof	4 days	Mon 8/21/23	Thu 8/24/23	164FS+7 days
166			Shoring Removal Ground Floor	4 days	Fri 8/25/23	Wed 8/30/23	165
167			2nd Floor Masonry Infill	5 days	Fri 8/25/23	Thu 8/31/23	165
168			Roof Masonry Infill / parapets	6 days	Thu 8/10/23	Thu 8/17/23	164
169			Ground Floor Masonry Infill	5 days	Thu 8/31/23	Wed 9/6/23	166
170			Ground Floor Flat Concrete	7 days	Thu 9/7/23	Fri 9/15/23	169
171			INTERIOR ROUGHS	35 days	Thu 8/10/23	Wed 9/27/23	
172			Layout, Framing and Stocking	26 days	Thu 8/10/23	Thu 9/14/23	
173			Stock Door Frames	2 days	Thu 8/10/23	Fri 8/11/23	164
174			2nd Floor	5 days	Fri 9/1/23	Thu 9/7/23	167
175			Ground Floor	5 days	Fri 9/8/23	Thu 9/14/23	174
176			Fire Sprinkler Rough	10 days	Fri 9/1/23	Thu 9/14/23	
177			2nd Floor	5 days	Fri 9/1/23	Thu 9/7/23	174SS
178			Ground Floor	5 days	Fri 9/8/23	Thu 9/14/23	175SS
179			HVAC Ductwork & Piping	20 days	Fri 8/18/23	Thu 9/14/23	
180			Roof Curbs & Goose Necks	3 days	Fri 8/18/23	Tue 8/22/23	168
181			2nd Floor	6 days	Fri 9/1/23	Fri 9/8/23	167
182			Ground Floor	6 days	Thu 9/7/23	Thu 9/14/23	169
183			HVAC Roof Equipment	6 days	Fri 9/1/23	Fri 9/8/23	196
184			Plumbing Rough	27 days	Fri 8/18/23	Mon 9/25/23	
185			Roof Vents	3 days	Fri 8/18/23	Tue 8/22/23	180SS
186			2nd Floor	7 days	Fri 9/8/23	Mon 9/18/23	174
187			Ground Floor	7 days	Fri 9/15/23	Mon 9/25/23	175
188			Electrical, Alarm & LV Conduit & Box	20 days	Thu 8/31/23	Wed 9/27/23	
189			Underground Piping	7 days	Thu 8/31/23	Fri 9/8/23	166
190			2nd Floor	7 days	Fri 9/8/23	Mon 9/18/23	177



HALLANDALE CITY CENTER

Preliminary Construction Schedule

ID		Task	Task Name	Duration	Start	Finish	Predecessors
191			Ground Floor	7 days	Tue 9/19/23	Wed 9/27/23	190
192			ENVELOPE & EXTERIORS	120 days	Fri 8/18/23	Thu 2/1/24	
193			Glazing	18 days	Fri 9/1/23	Tue 9/26/23	
194			2nd Floor	7 days	Fri 9/1/23	Mon 9/11/23	167
195			Ground Floor	7 days	Mon 9/18/23	Tue 9/26/23	170
196			Roofing: Waterproofing & Insulation	10 days	Fri 8/18/23	Thu 8/31/23	168
197			Exterior Doors	10 days	Fri 9/1/23	Thu 9/14/23	196
198			Stucco	40 days	Wed 9/27/23	Tue 11/21/23	
199			North Face	10 days	Wed 10/11/23	Tue 10/24/23	200
200			East Face	10 days	Wed 9/27/23	Tue 10/10/23	195
201			South Face	10 days	Wed 10/25/23	Tue 11/7/23	199
202			West Face	10 days	Wed 11/8/23	Tue 11/21/23	201
203			Handrails & Guard Rails	15 days	Wed 11/22/23	Tue 12/12/23	202
204			Exterior Painting	15 days	Wed 11/22/23	Tue 12/12/23	202
205			General Signage & Specialties	20 days	Fri 1/5/24	Thu 2/1/24	248SS,204
206			FINISHES & TRIM	93 days	Thu 9/28/23	Mon 2/5/24	
207			Framing Inspection & Insulation	10 days	Thu 9/28/23	Wed 10/11/23	
208			2nd Floor	5 days	Thu 9/28/23	Wed 10/4/23	195,196,191
209			Ground Floor	5 days	Thu 10/5/23	Wed 10/11/23	208
210			Hang Drywall	15 days	Thu 10/5/23	Wed 10/25/23	
211			2nd Floor	10 days	Thu 10/5/23	Wed 10/18/23	208
212			Ground Floor	10 days	Thu 10/12/23	Wed 10/25/23	209
213			Finish Drywall	15 days	Thu 10/19/23	Wed 11/8/23	
214			2nd Floor	10 days	Thu 10/19/23	Wed 11/1/23	211
215			Ground Floor	10 days	Thu 10/26/23	Wed 11/8/23	212
216			Install Interior Doors	12 days	Thu 11/2/23	Fri 11/17/23	
217			2nd Floor	7 days	Thu 11/2/23	Fri 11/10/23	214
218			Ground Floor	7 days	Thu 11/9/23	Fri 11/17/23	215
219			Interior Painting	12 days	Mon 11/13/23	Tue 11/28/23	
220			2nd Floor	7 days	Mon 11/13/23	Tue 11/21/23	217
221			Ground Floor	7 days	Mon 11/20/23	Tue 11/28/23	218
222			Wall & Flooring Tile	20 days	Wed 11/22/23	Tue 12/19/23	
223			2nd Floor	15 days	Wed 11/22/23	Tue 12/12/23	220
224			Ground Floor	15 days	Wed 11/29/23	Tue 12/19/23	221
225			Kitchen & Bathroom Cabinets	17 days	Wed 12/13/23	Thu 1/4/24	
226			2nd Floor	12 days	Wed 12/13/23	Thu 12/28/23	223
227			Ground Floor	12 days	Wed 12/20/23	Thu 1/4/24	224
228			Kitchen Appliances	10 days	Fri 12/29/23	Thu 1/11/24	
229			2nd Floor	5 days	Fri 12/29/23	Thu 1/4/24	226
230			Ground Floor	5 days	Fri 1/5/24	Thu 1/11/24	227
231			Electrical Fixtures & Trim	30 days	Wed 11/22/23	Tue 1/2/24	
232			2nd Floor	10 days	Wed 12/13/23	Tue 12/26/23	223
233			Ground Floor	10 days	Wed 12/20/23	Tue 1/2/24	224
234			Exterior	10 days	Wed 11/22/23	Tue 12/5/23	198
235			Plumbing Fixtures	15 days	Wed 12/13/23	Tue 1/2/24	
236			2nd Floor	10 days	Wed 12/13/23	Tue 12/26/23	223
237			Ground Floor	10 days	Wed 12/20/23	Tue 1/2/24	224
238			Fire Sprinkler Trim	14 days	Fri 1/12/24	Wed 1/31/24	
239			2nd Floor	7 days	Fri 1/12/24	Mon 1/22/24	230
240			Ground Floor	7 days	Tue 1/23/24	Wed 1/31/24	239
241			Fire Alarm & Low Voltage Trim	17 days	Fri 1/12/24	Mon 2/5/24	
242			2nd Floor	10 days	Fri 1/12/24	Thu 1/25/24	230
243			Ground Floor	10 days	Tue 1/23/24	Mon 2/5/24	239
244			HVAC Trim	12 days	Wed 12/13/23	Thu 12/28/23	
245			2nd Floor	7 days	Wed 12/13/23	Thu 12/21/23	236SS
246			Ground Floor	7 days	Wed 12/20/23	Thu 12/28/23	237SS
247			HVAC Startup	8 days	Fri 12/29/23	Tue 1/9/24	246
248			Bath Accessories	15 days	Fri 1/5/24	Thu 1/25/24	225,235
249			FINAL INSPECTIONS	64 days	Wed 1/3/24	Mon 4/1/24	
250			Fire	15 days	Tue 2/20/24	Mon 3/11/24	243,251,252,255
251			Mechanical	10 days	Wed 1/10/24	Tue 1/23/24	247
252			Plumbing	10 days	Wed 1/3/24	Tue 1/16/24	235



HALLANDALE CITY CENTER

Preliminary Construction Schedule

ID		Task	Task Name	Duration	Start	Finish	Predecessors
253			Building	15 days	Tue 3/12/24	Mon 4/1/24	250
254			Zoning	10 days	Tue 3/12/24	Mon 3/25/24	253SS
255			Electrical	10 days	Tue 2/6/24	Mon 2/19/24	231,241
256			BLOCK B	246 days	Mon 4/24/23	Mon 4/1/24	
257			CONCRETE STRUCTURE	105 days	Mon 4/24/23	Fri 9/15/23	
258			Foundation	25 days	Mon 4/24/23	Fri 5/26/23	28
259			Ground Floor Verticals 1st Lift	5 days	Mon 5/29/23	Fri 6/2/23	155
260			Ground Floor Verticals 2nd Lift	5 days	Mon 6/5/23	Fri 6/9/23	156
261			2nd Floor Shoring / Decking - 1st Pour	7 days	Mon 6/12/23	Tue 6/20/23	157
262			2nd Floor Shoring / Decking - 2nd Pour	7 days	Wed 6/21/23	Thu 6/29/23	158
263			2nd Floor Verticals - 1st Lift	5 days	Fri 6/30/23	Thu 7/6/23	159
264			2nd Floor Verticals - 2nd Lift	5 days	Fri 7/7/23	Thu 7/13/23	160
265			Roof Shoring / Decking - 1st Pour	7 days	Fri 7/14/23	Mon 7/24/23	161
266			Roof Shoring / Decking - 2nd Pour	7 days	Tue 7/25/23	Wed 8/2/23	162
267			Roof Overpours	5 days	Thu 8/3/23	Wed 8/9/23	163
268			Shoring Removal 2nd to Roof	4 days	Mon 8/21/23	Thu 8/24/23	164FS+7 days
269			Shoring Removal Ground Floor	4 days	Fri 8/25/23	Wed 8/30/23	165
270			2nd Floor Masonry Infill	5 days	Fri 8/25/23	Thu 8/31/23	165
271			Roof Masonry Infill / parapets	6 days	Thu 8/10/23	Thu 8/17/23	164
272			Ground Floor Masonry Infill	5 days	Thu 8/31/23	Wed 9/6/23	166
273			Ground Floor Flat Concrete	7 days	Thu 9/7/23	Fri 9/15/23	169
274			INTERIOR ROUGHS	35 days	Thu 8/10/23	Wed 9/27/23	
275			Layout, Framing and Stocking	26 days	Thu 8/10/23	Thu 9/14/23	
276			Stock Door Frames	2 days	Thu 8/10/23	Fri 8/11/23	164
277			2nd Floor	5 days	Fri 9/1/23	Thu 9/7/23	167
278			Ground Floor	5 days	Fri 9/8/23	Thu 9/14/23	174
279			Fire Sprinkler Rough	10 days	Fri 9/1/23	Thu 9/14/23	
280			2nd Floor	5 days	Fri 9/1/23	Thu 9/7/23	174SS
281			Ground Floor	5 days	Fri 9/8/23	Thu 9/14/23	175SS
282			HVAC Ductwork & Piping	20 days	Fri 8/18/23	Thu 9/14/23	
283			Roof Curbs & Goose Necks	3 days	Fri 8/18/23	Tue 8/22/23	168
284			2nd Floor	6 days	Fri 9/1/23	Fri 9/8/23	167
285			Ground Floor	6 days	Thu 9/7/23	Thu 9/14/23	169
286			HVAC Roof Equipment	6 days	Fri 9/1/23	Fri 9/8/23	196
287			Plumbing Rough	27 days	Fri 8/18/23	Mon 9/25/23	
288			Roof Vents	3 days	Fri 8/18/23	Tue 8/22/23	180SS
289			2nd Floor	7 days	Fri 9/8/23	Mon 9/18/23	174
290			Ground Floor	7 days	Fri 9/15/23	Mon 9/25/23	175
291			Electrical, Alarm & LV Conduit & Box	20 days	Thu 8/31/23	Wed 9/27/23	
292			Underground Piping	7 days	Thu 8/31/23	Fri 9/8/23	166
293			2nd Floor	7 days	Fri 9/8/23	Mon 9/18/23	177
294			Ground Floor	7 days	Tue 9/19/23	Wed 9/27/23	190
295			ENVELOPE & EXTERIORS	120 days	Fri 8/18/23	Thu 2/1/24	
296			Glazing	18 days	Fri 9/1/23	Tue 9/26/23	
297			2nd Floor	7 days	Fri 9/1/23	Mon 9/11/23	167
298			Ground Floor	7 days	Mon 9/18/23	Tue 9/26/23	170
299			Roofing: Waterproofing & Insulation	10 days	Fri 8/18/23	Thu 8/31/23	168
300			Exterior Doors	10 days	Fri 9/1/23	Thu 9/14/23	196
301			Stucco	40 days	Wed 9/27/23	Tue 11/21/23	
302			North Face	10 days	Wed 10/11/23	Tue 10/24/23	200
303			East Face	10 days	Wed 9/27/23	Tue 10/10/23	195
304			South Face	10 days	Wed 10/25/23	Tue 11/7/23	199
305			West Face	10 days	Wed 11/8/23	Tue 11/21/23	201
306			Handrails & Guard Rails	15 days	Wed 11/22/23	Tue 12/12/23	202
307			Exterior Painting	15 days	Wed 11/22/23	Tue 12/12/23	202
308			General Signage & Specialties	20 days	Fri 1/5/24	Thu 2/1/24	248SS,204
309			FINISHES & TRIM	93 days	Thu 9/28/23	Mon 2/5/24	
310			Framing Inspection & Insulation	10 days	Thu 9/28/23	Wed 10/11/23	
311			2nd Floor	5 days	Thu 9/28/23	Wed 10/4/23	195,196,191
312			Ground Floor	5 days	Thu 10/5/23	Wed 10/11/23	208
313			Hang Drywall	15 days	Thu 10/5/23	Wed 10/25/23	
314			2nd Floor	10 days	Thu 10/5/23	Wed 10/18/23	208



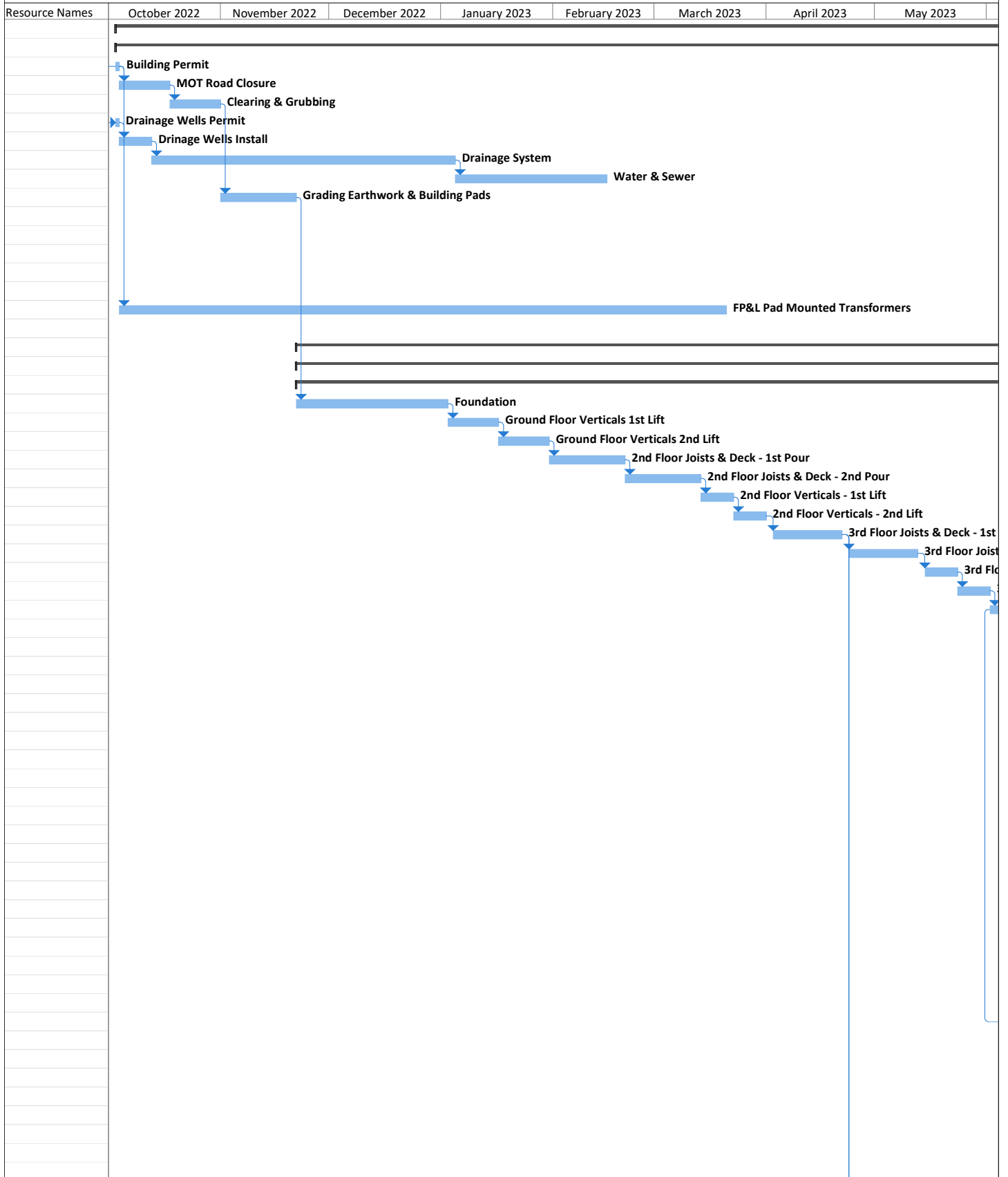
HALLANDALE CITY CENTER

Preliminary Construction Schedule

ID		Task	Task Name	Duration	Start	Finish	Predecessors
315			Ground Floor	10 days	Thu 10/12/23	Wed 10/25/23	209
316			Finish Drywall	15 days	Thu 10/19/23	Wed 11/8/23	
317			2nd Floor	10 days	Thu 10/19/23	Wed 11/1/23	211
318			Ground Floor	10 days	Thu 10/26/23	Wed 11/8/23	212
319			Install Interior Doors	12 days	Thu 11/2/23	Fri 11/17/23	
320			2nd Floor	7 days	Thu 11/2/23	Fri 11/10/23	214
321			Ground Floor	7 days	Thu 11/9/23	Fri 11/17/23	215
322			Interior Painting	12 days	Mon 11/13/23	Tue 11/28/23	
323			2nd Floor	7 days	Mon 11/13/23	Tue 11/21/23	217
324			Ground Floor	7 days	Mon 11/20/23	Tue 11/28/23	218
325			Wall & Flooring Tile	20 days	Wed 11/22/23	Tue 12/19/23	
326			2nd Floor	15 days	Wed 11/22/23	Tue 12/12/23	220
327			Ground Floor	15 days	Wed 11/29/23	Tue 12/19/23	221
328			Kitchen & Bathroom Cabinets	17 days	Wed 12/13/23	Thu 1/4/24	
329			2nd Floor	12 days	Wed 12/13/23	Thu 12/28/23	223
330			Ground Floor	12 days	Wed 12/20/23	Thu 1/4/24	224
331			Kitchen Appliances	10 days	Fri 12/29/23	Thu 1/11/24	
332			2nd Floor	5 days	Fri 12/29/23	Thu 1/4/24	226
333			Ground Floor	5 days	Fri 1/5/24	Thu 1/11/24	227
334			Electrical Fixtures & Trim	30 days	Wed 11/22/23	Tue 1/2/24	
335			2nd Floor	10 days	Wed 12/13/23	Tue 12/26/23	223
336			Ground Floor	10 days	Wed 12/20/23	Tue 1/2/24	224
337			Exterior	10 days	Wed 11/22/23	Tue 12/5/23	198
338			Plumbing Fixtures	15 days	Wed 12/13/23	Tue 1/2/24	
339			2nd Floor	10 days	Wed 12/13/23	Tue 12/26/23	223
340			Ground Floor	10 days	Wed 12/20/23	Tue 1/2/24	224
341			Fire Sprinkler Trim	14 days	Fri 1/12/24	Wed 1/31/24	
342			2nd Floor	7 days	Fri 1/12/24	Mon 1/22/24	230
343			Ground Floor	7 days	Tue 1/23/24	Wed 1/31/24	239
344			Fire Alarm & Low Voltage Trim	17 days	Fri 1/12/24	Mon 2/5/24	
345			2nd Floor	10 days	Fri 1/12/24	Thu 1/25/24	230
346			Ground Floor	10 days	Tue 1/23/24	Mon 2/5/24	239
347			HVAC Trim	12 days	Wed 12/13/23	Thu 12/28/23	
348			2nd Floor	7 days	Wed 12/13/23	Thu 12/21/23	236SS
349			Ground Floor	7 days	Wed 12/20/23	Thu 12/28/23	237SS
350			HVAC Startup	8 days	Fri 12/29/23	Tue 1/9/24	246
351			Bath Accessories	15 days	Fri 1/5/24	Thu 1/25/24	225,235
352			FINAL INSPECTIONS	64 days	Wed 1/3/24	Mon 4/1/24	
353			Fire	15 days	Tue 2/20/24	Mon 3/11/24	243,251,252,255
354			Mechanical	10 days	Wed 1/10/24	Tue 1/23/24	247
355			Plumbing	10 days	Wed 1/3/24	Tue 1/16/24	235
356			Building	15 days	Tue 3/12/24	Mon 4/1/24	250
357			Zoning	10 days	Tue 3/12/24	Mon 3/25/24	253SS
358			Electrical	10 days	Tue 2/6/24	Mon 2/19/24	231,241



HALLANDALE CITY CENTER
Preliminary Construction Schedule



Page 8

Page 9

Page 10

Page 11

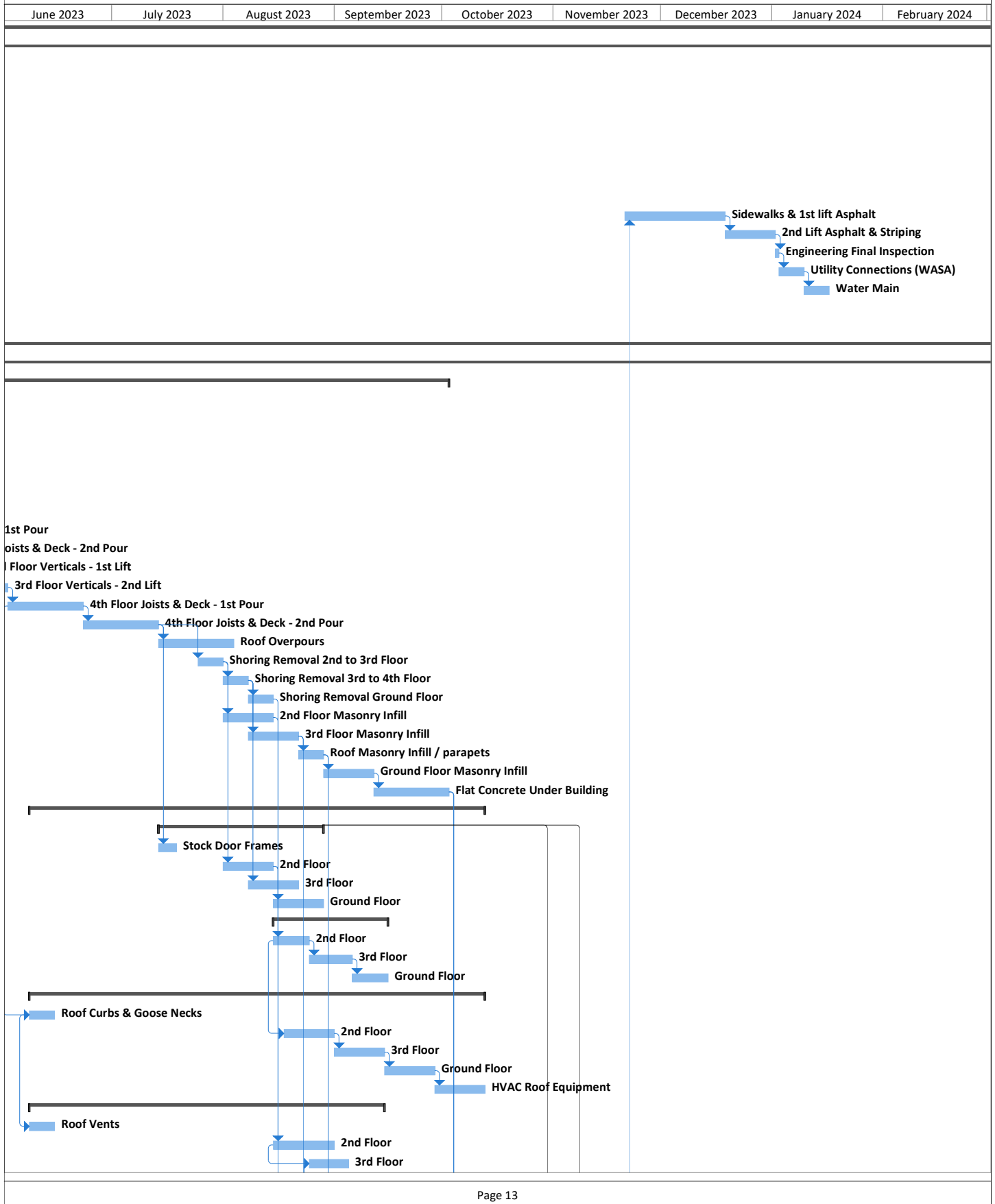


HALLANDALE CITY CENTER
Preliminary Construction Schedule

Resource Names	October 2022	November 2022	December 2022	January 2023	February 2023	March 2023	April 2023	May 2023

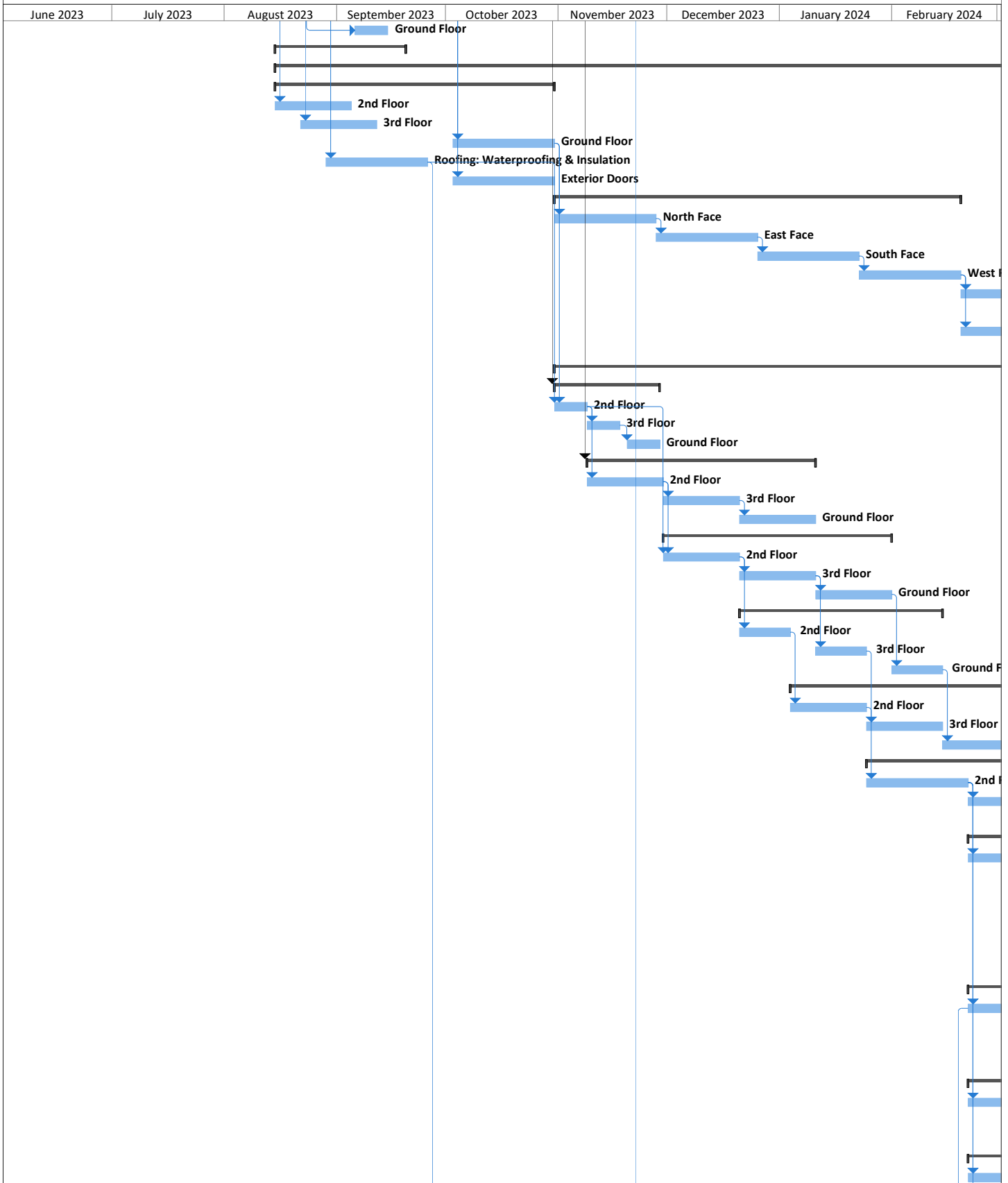


HALLANDALE CITY CENTER Preliminary Construction Schedule



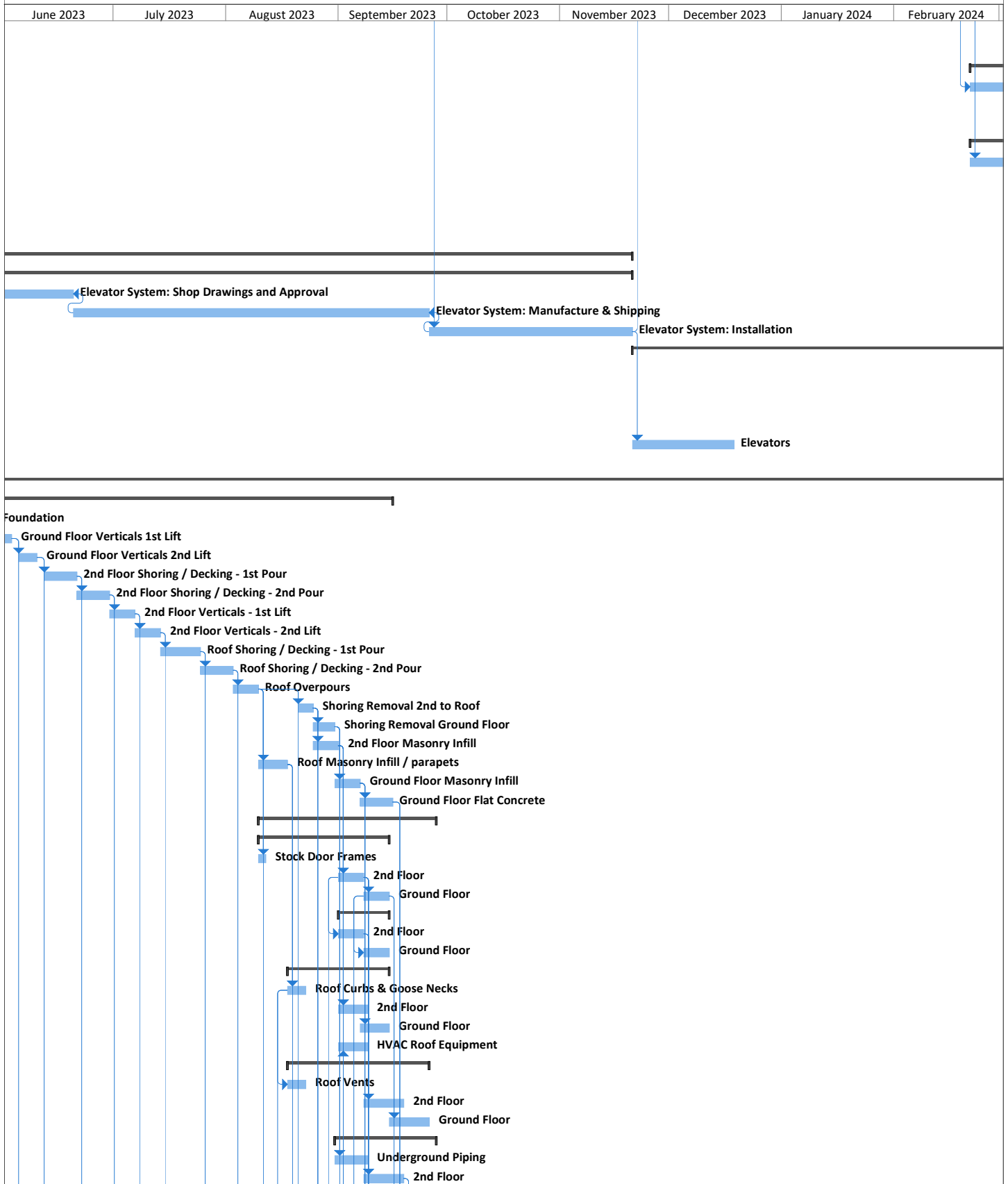


HALLANDALE CITY CENTER Preliminary Construction Schedule



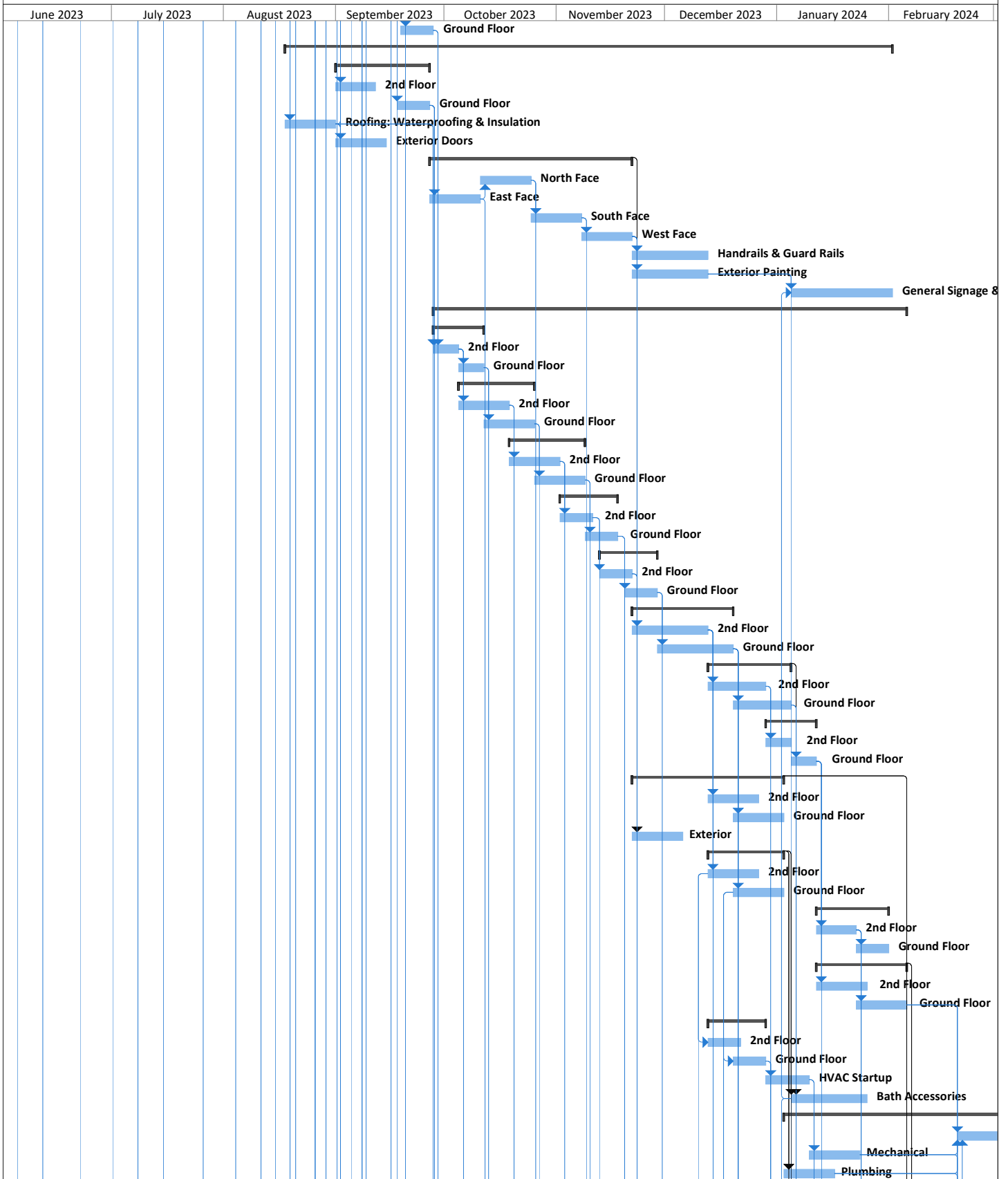


HALLANDALE CITY CENTER Preliminary Construction Schedule



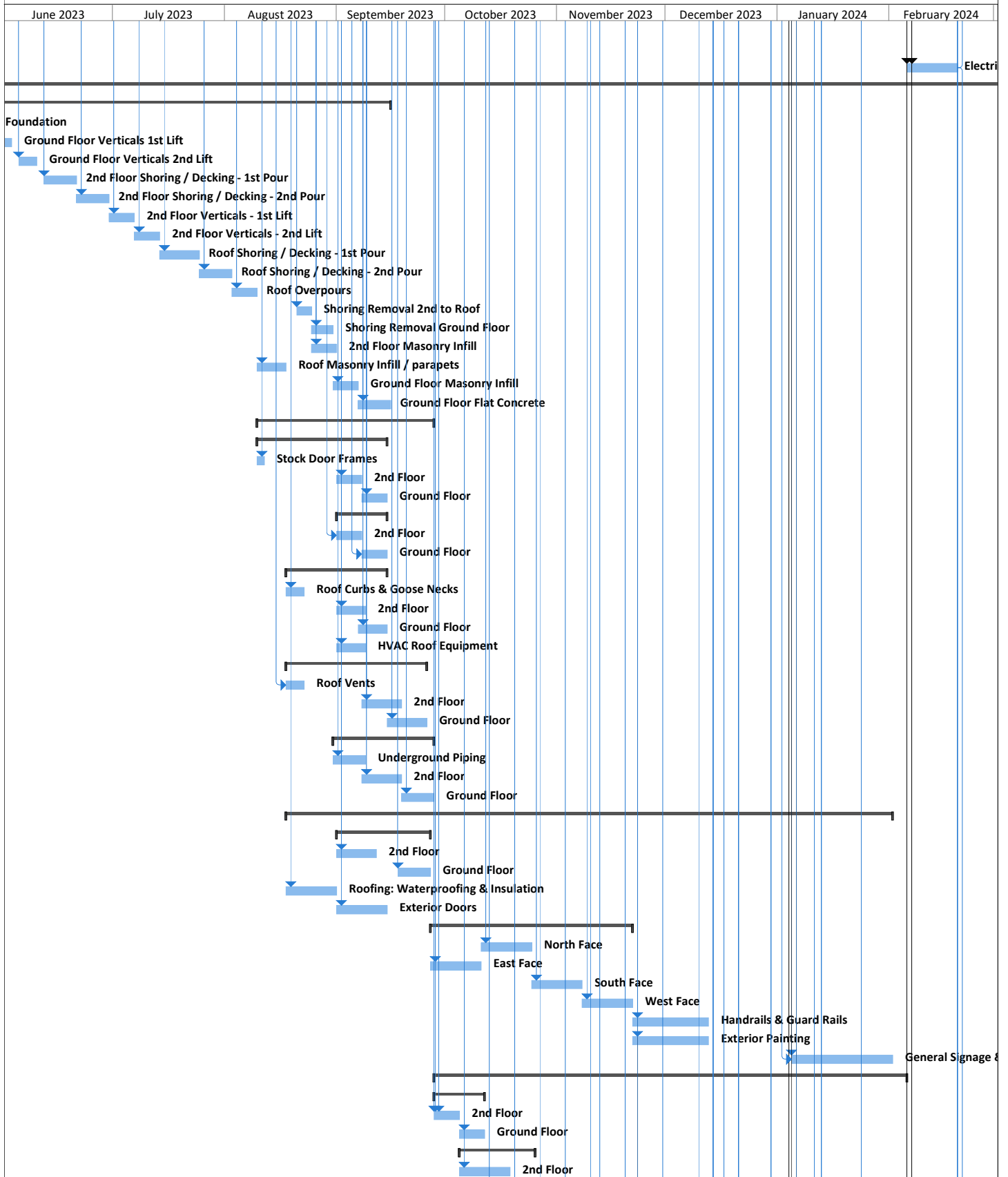


HALLANDALE CITY CENTER Preliminary Construction Schedule





HALLANDALE CITY CENTER Preliminary Construction Schedule





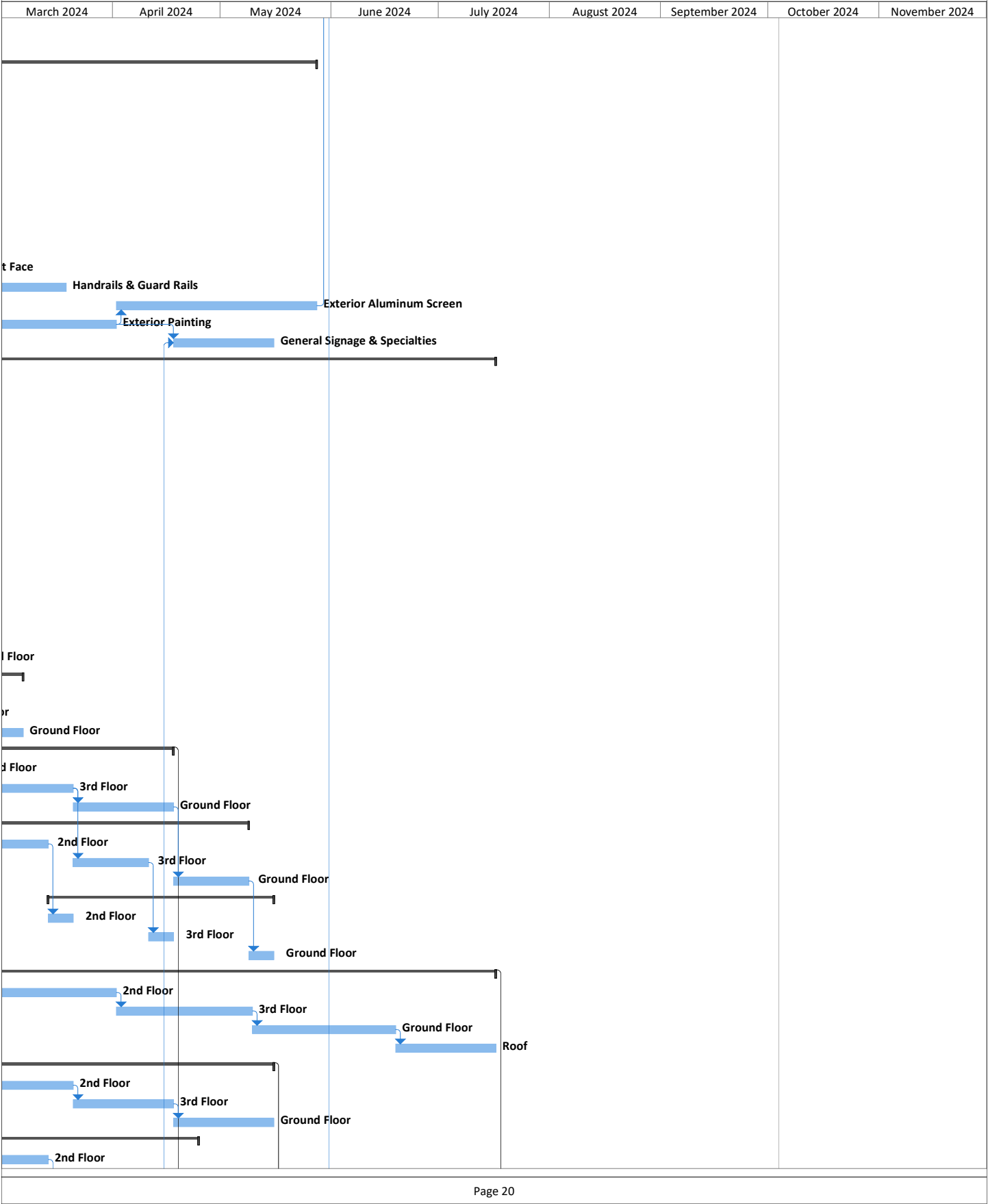


HALLANDALE CITY CENTER
Preliminary Construction Schedule

March 2024	April 2024	May 2024	June 2024	July 2024	August 2024	September 2024	October 2024	November 2024
								</

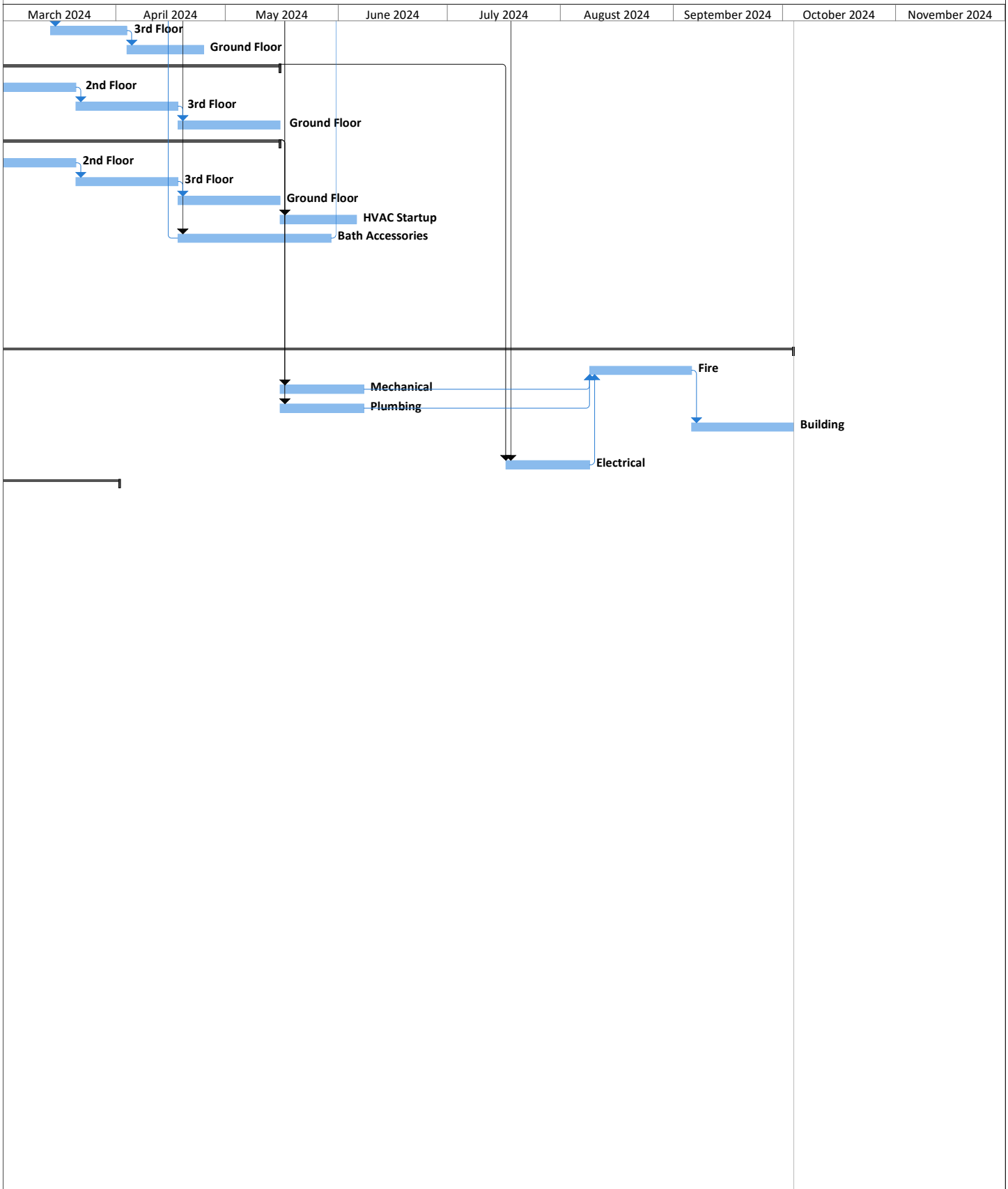


HALLANDALE CITY CENTER
Preliminary Construction Schedule





HALLANDALE CITY CENTER Preliminary Construction Schedule



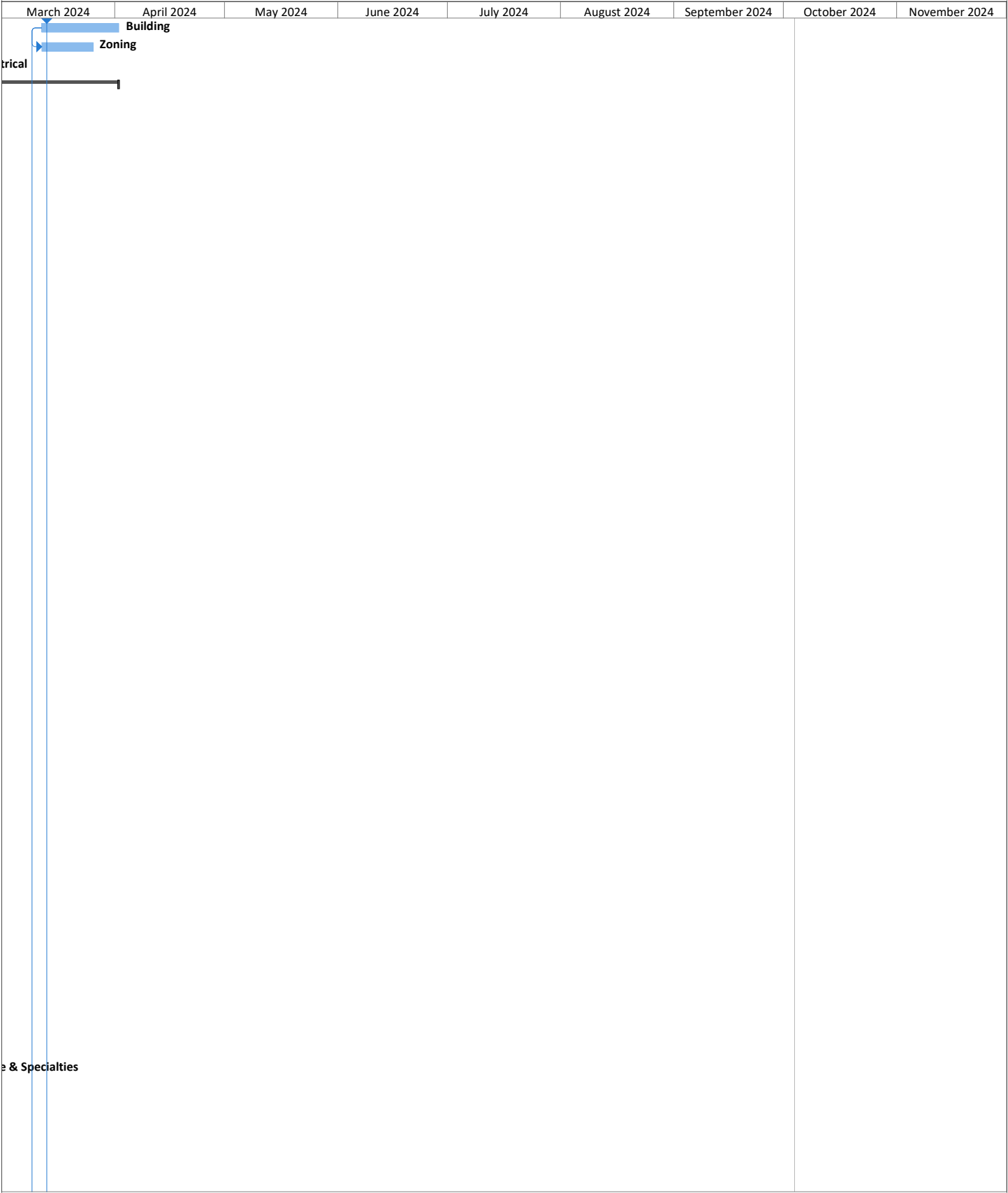


HALLANDALE CITY CENTER
Preliminary Construction Schedule

March 2024	April 2024	May 2024	June 2024	July 2024	August 2024	September 2024	October 2024	November 2024



HALLANDALE CITY CENTER
Preliminary Construction Schedule





HALLANDALE CITY CENTER
Preliminary Construction Schedule

March 2024	April 2024	May 2024	June 2024	July 2024	August 2024	September 2024	October 2024	November 2024
<div>er</div> <div>ctrical</div> <div>Fire</div> <div>Building</div> <div>Zoning</div>								