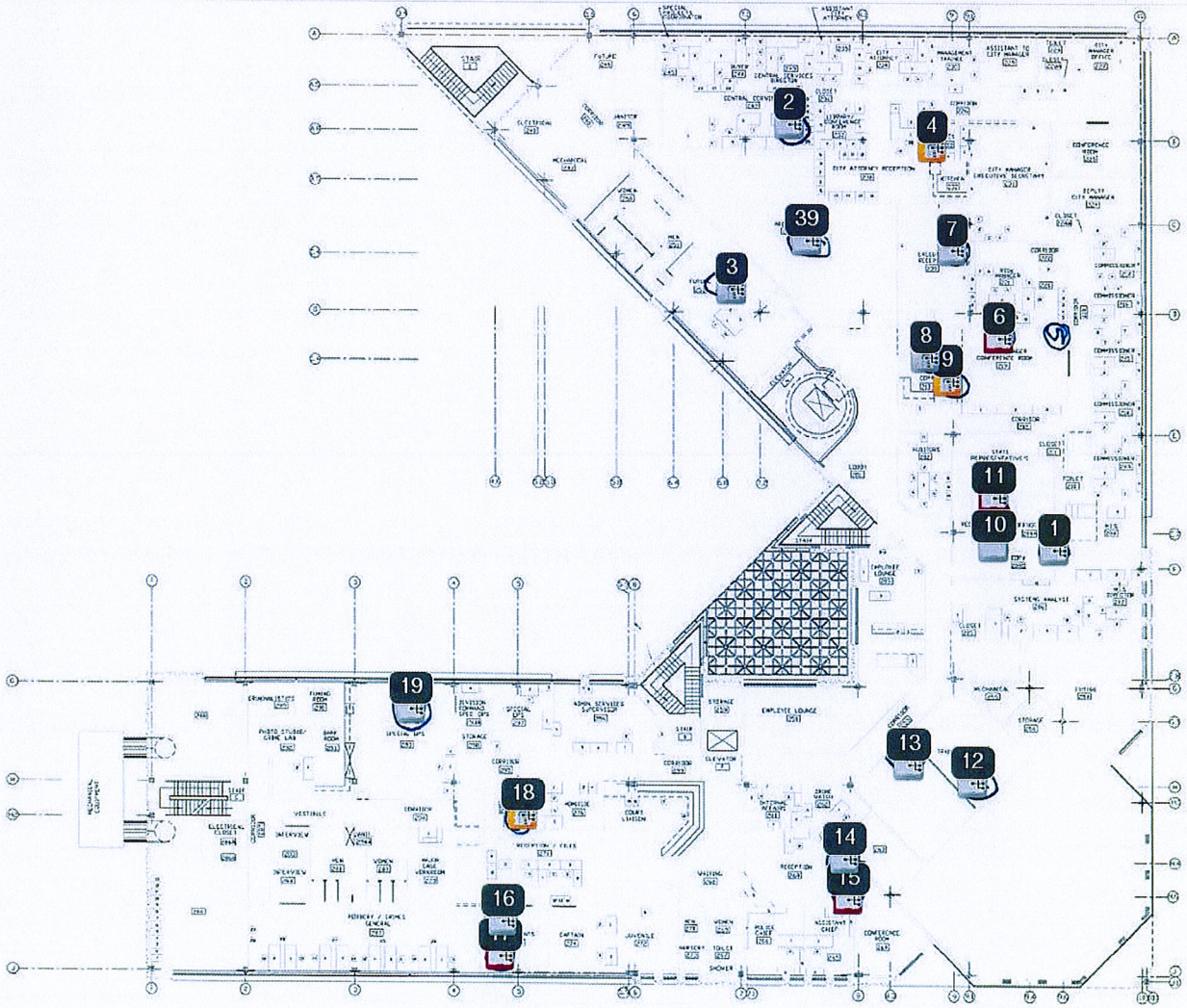


➤ **Current State: CITY OF HALLANDALE BEACH FL-  
HALLANDALE-820936, 400 S FEDERAL HWY CITY HALL,  
Floor 2**

*2nd FL City Hall*



Revisions  
No./By/Remarks/Approved

07-19-96	
07-18-96	
01-02-97	

Drawn By: MUNCIPAL  
Field No. No. Pg.  
Project No.

DATE: 07-25-96  
DRAWN BY: [Signature]  
CHECKED BY: [Signature]  
APPROVED BY: [Signature]

The City of  
DEPARTMENTS OF PUBLIC WORKS,  
UTILITIES, AND ENGINEERING

CITY MANAGER  
K.J. INTINDOLA  
DIRECTOR OF PUBLIC WORKS  
JOHN C. DEFF  
CITY ENGINEER  
DAVID PRITCHARD  
PROJECT MANAGER

HALLANDALE  
MUNICIPAL  
COMPLEX

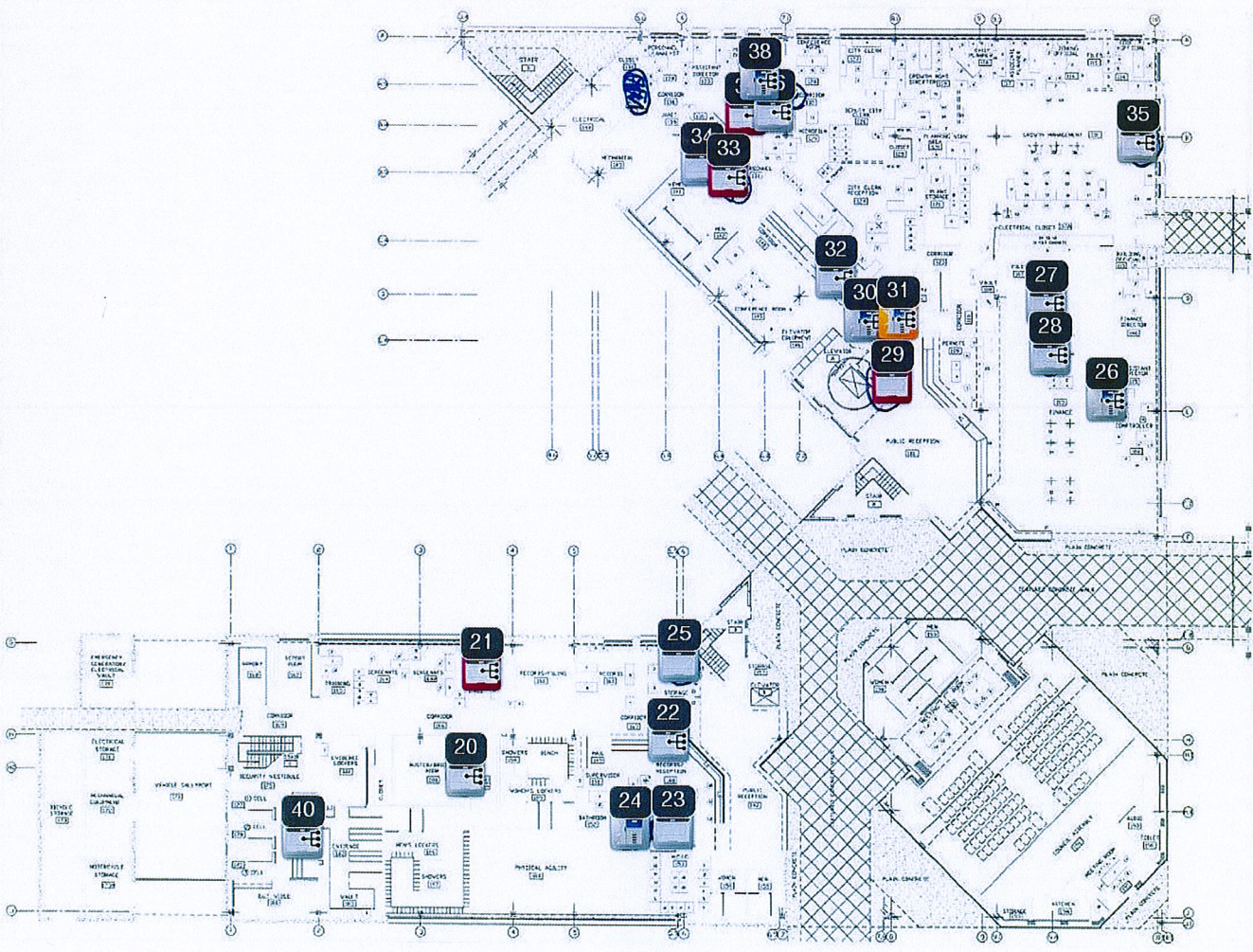
SCALE: 1/8" = 1'-0"  
0 1 2 3 4 5 6 7 8 9 10

Inches  
File No.  
Sheet No. 3 OF 2

➤ **Current State: CITY OF HALLANDALE BEACH FL-  
HALLANDALE-820936, 400 S FEDERAL HWY CITY HALL,**

**Floor 1**

*2nd FL  
City Hall*



Revisions	
No./By/Remarks/Approved	Date
01-11-16	
12-18-16	
01-22-17	

CADD File: MUNC(DWG)  
Title: 820936  
Project No: 24

02/11/16 07-19-16  
Drawn by: Dale  
Checked by: Dale  
Signed by: Dale

The City of  
DEPARTMENTS OF PUBLIC WORKS,  
UTILITIES, AND ENGINEERING

CITY MANAGER  
K.J. INTINGOLA

DIRECTOR OF PUBLIC WORKS  
JOHN C. DEPP

SECURITY DIV. / CITY ENGINEER  
DAVID FITCHERD

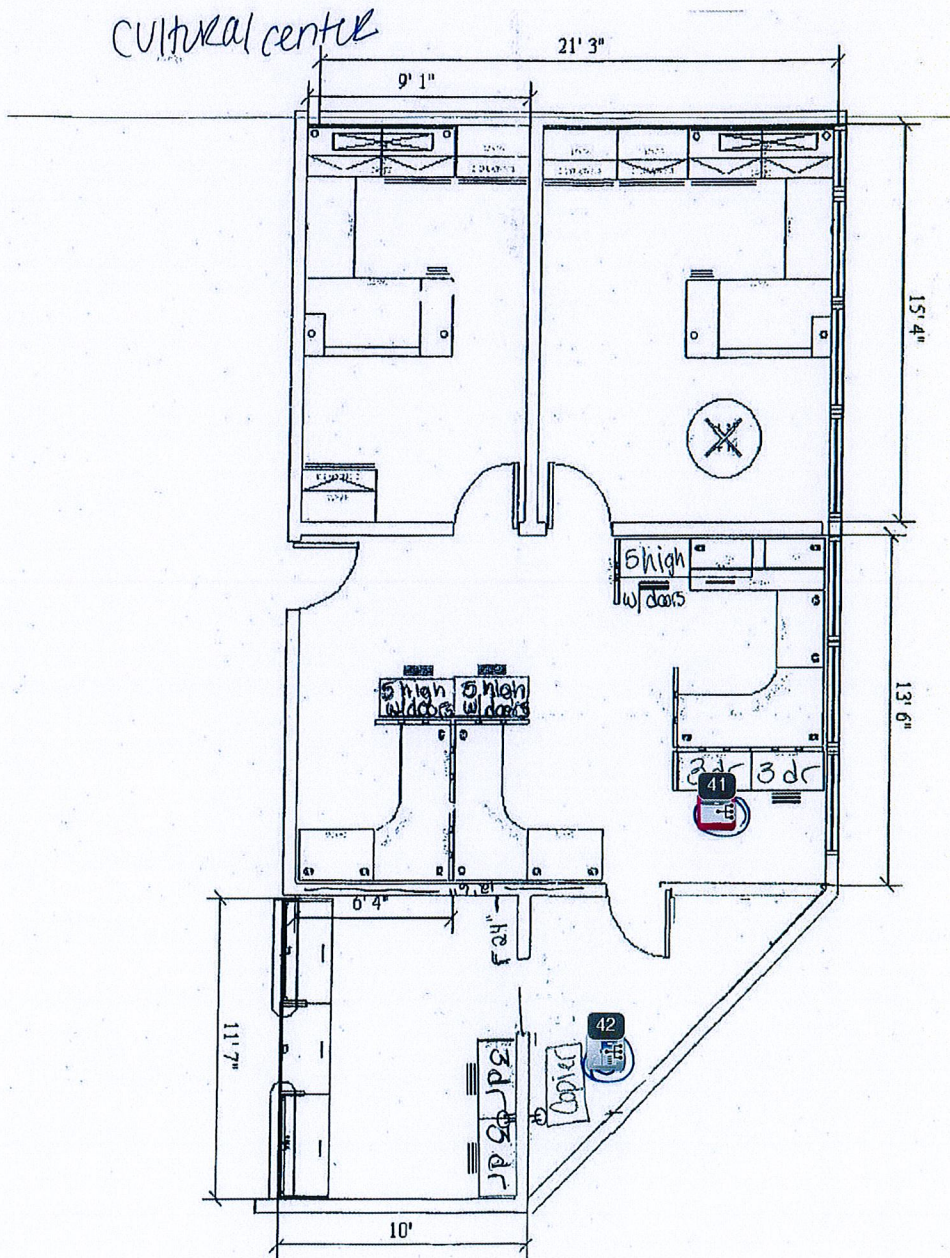
PROJECT MANAGER

HALLANDALE  
MUNICIPAL  
COMPLEX

SCALE: 1"=10'

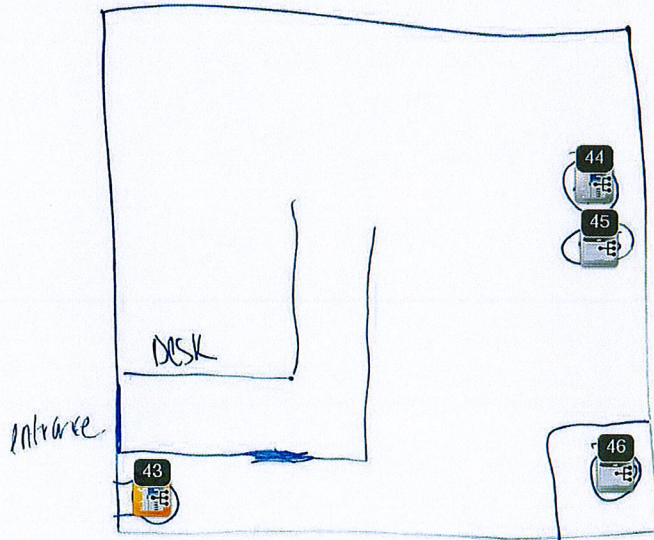
Index  
File No.  
Sheet No. 1 of 7

➤ **Current State: CITY OF HALLANDALE BEACH FL-**  
**HALLANDALE-820936, 410 SE 3RD ST CULTURAL**  
**COMMUNITY CENTER, Floor 1**



> **Current State: CITY OF HALLANDALE BEACH FL-  
HALLANDALE-820936, FIRE DEPARTMENT 121 SW 3  
STREET, Floor 1**

*Fire station I*



> Current State: CITY OF HALLANDALE BEACH FL-  
HALLANDALE-820936, 1000 NW 8TH AVE HUMAN  
SERVICES, Floor 1

Heppburn center



> Current State: CITY OF HALLANDALE BEACH FL-  
HALLANDALE-820936, PUBLIC WORKS 630 NW 2ND ST,  
Floor 1

