



City of Hallandale Beach Vulnerability Assessment & Adaptation Plan (VAAP)

Alyssa Jones Wood, LEED Green Associate & NWF Habitat Steward
Green Initiatives Coordinator



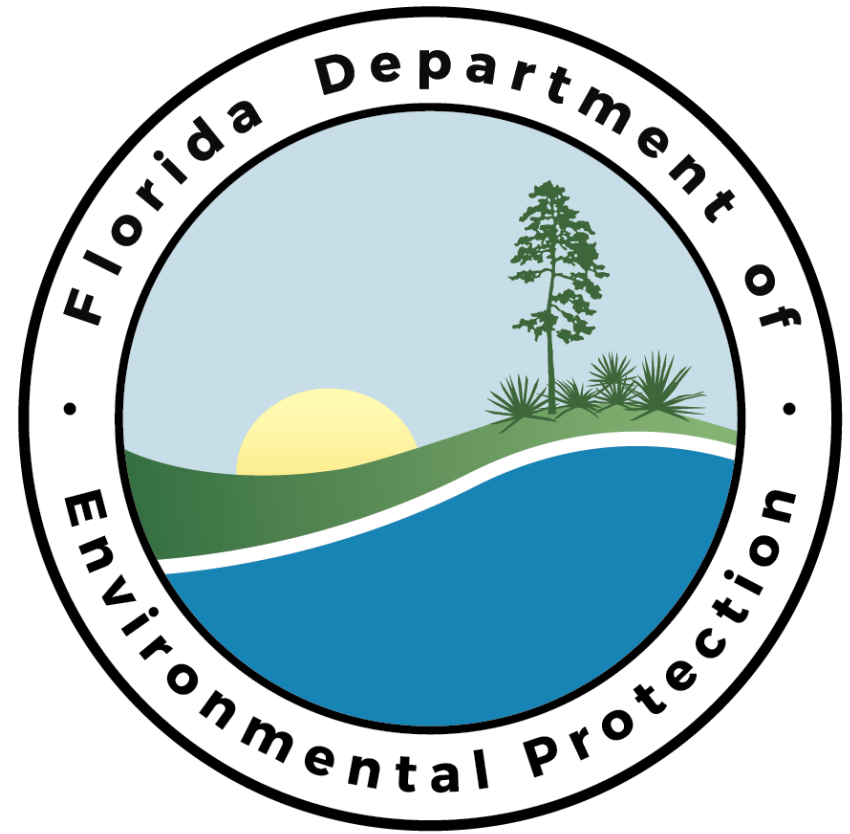
Ties to the SAP

BY 2022

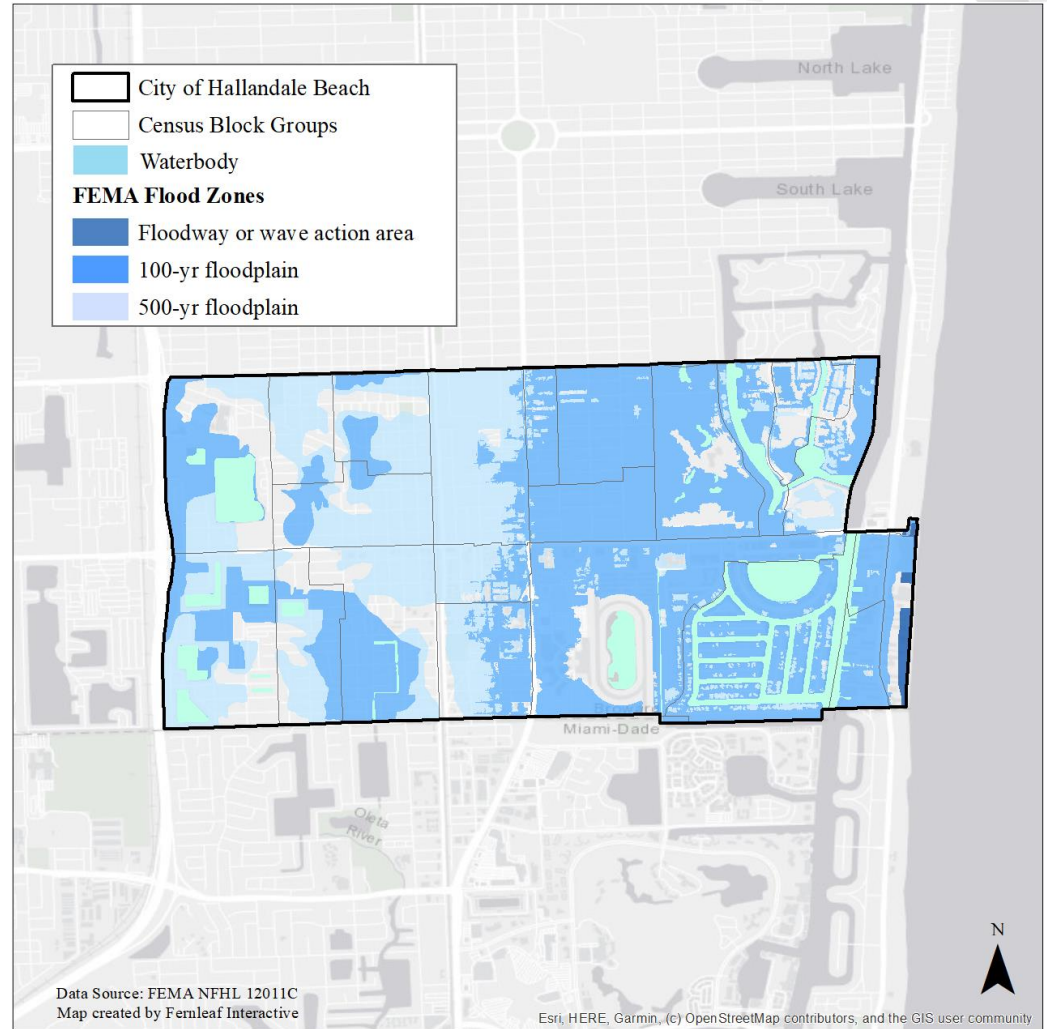
TABLE 3: HALLANDALE BEACH SHORT-TERM SUSTAINABILITY GOALS

<p>RESOURCE CONSERVATION & EFFICIENCY</p>  <ul style="list-style-type: none"> Reduce electricity consumption of City operations by 15% Reduce potable water consumption of City operations by 20% Displace 10% of gasoline / diesel fuels with fuel efficiency or alternative fuels 	<p>MATERIALS MINIMIZATION & RECYCLING</p>  <ul style="list-style-type: none"> Achieve a 30% diversion rate from recycling and composting Reduce total waste from City operations by 5% through source reduction 	<p>LAND USE & TRANSPORTATION</p>  <ul style="list-style-type: none"> Establish targeted green building standards for new public, commercial and multifamily buildings and infrastructure Increase existing percentage of the bicycle/ pedestrian network that attains Level of Service B or better by 10% annually
<p>NATURAL RESOURCES & RESILIENCY</p>  <ul style="list-style-type: none"> Complete a vulnerability assessment and adaptation action plan Improve the City's Community Rating System classification to 5 Complete a dune management plan 	<p>EDUCATION & OUTREACH</p>  <ul style="list-style-type: none"> Train and achieve commitment from 100% of employees to understand and contribute to sustainability initiatives Develop a sustainability communications plan 	<p>FUNDING & EVALUATION</p>  <ul style="list-style-type: none"> Fund sustainability action plan projects with 50% internal funds, 50% external funds (grants and developer contributions) Measure and monitor 50% of 19 sustainability key performance indicators

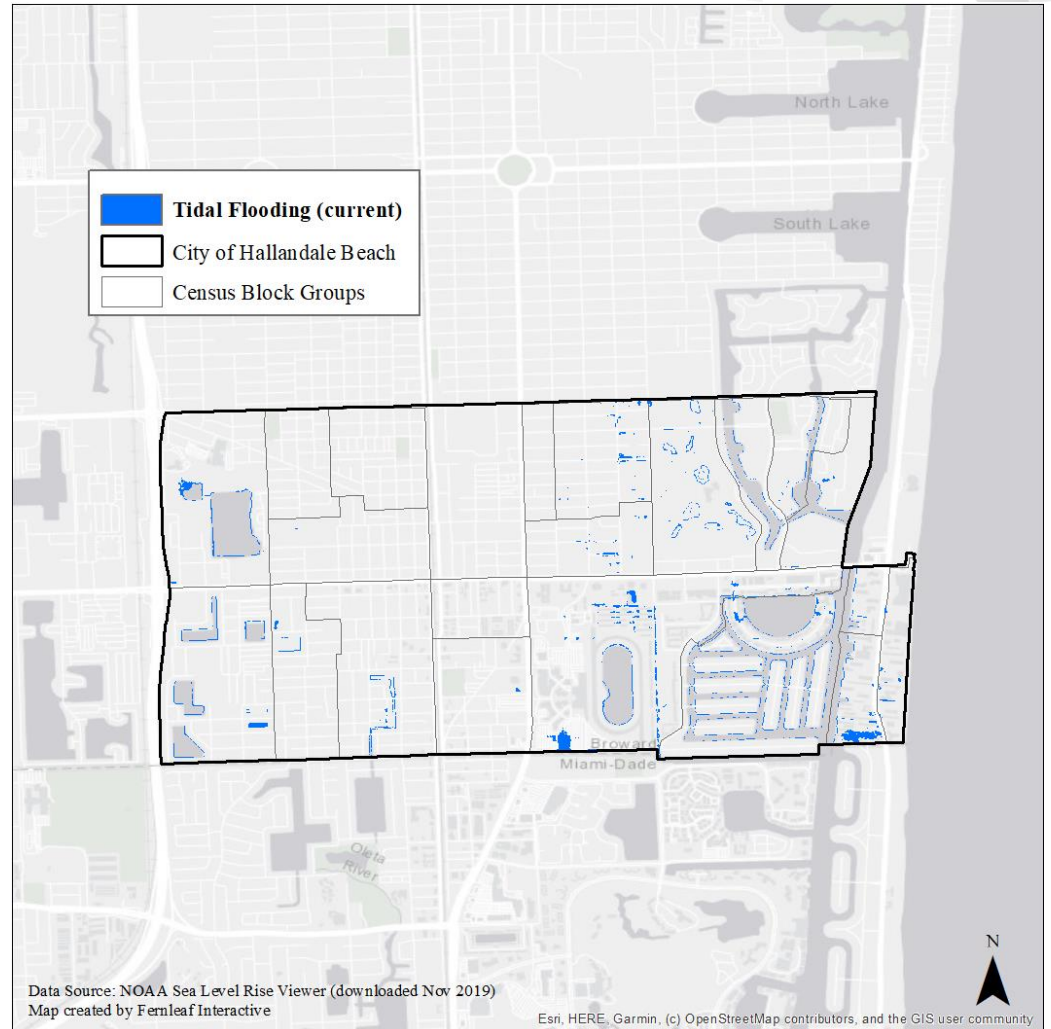
Made
Possible By
FDEP's
Florida
Resilient
Coastlines
Program



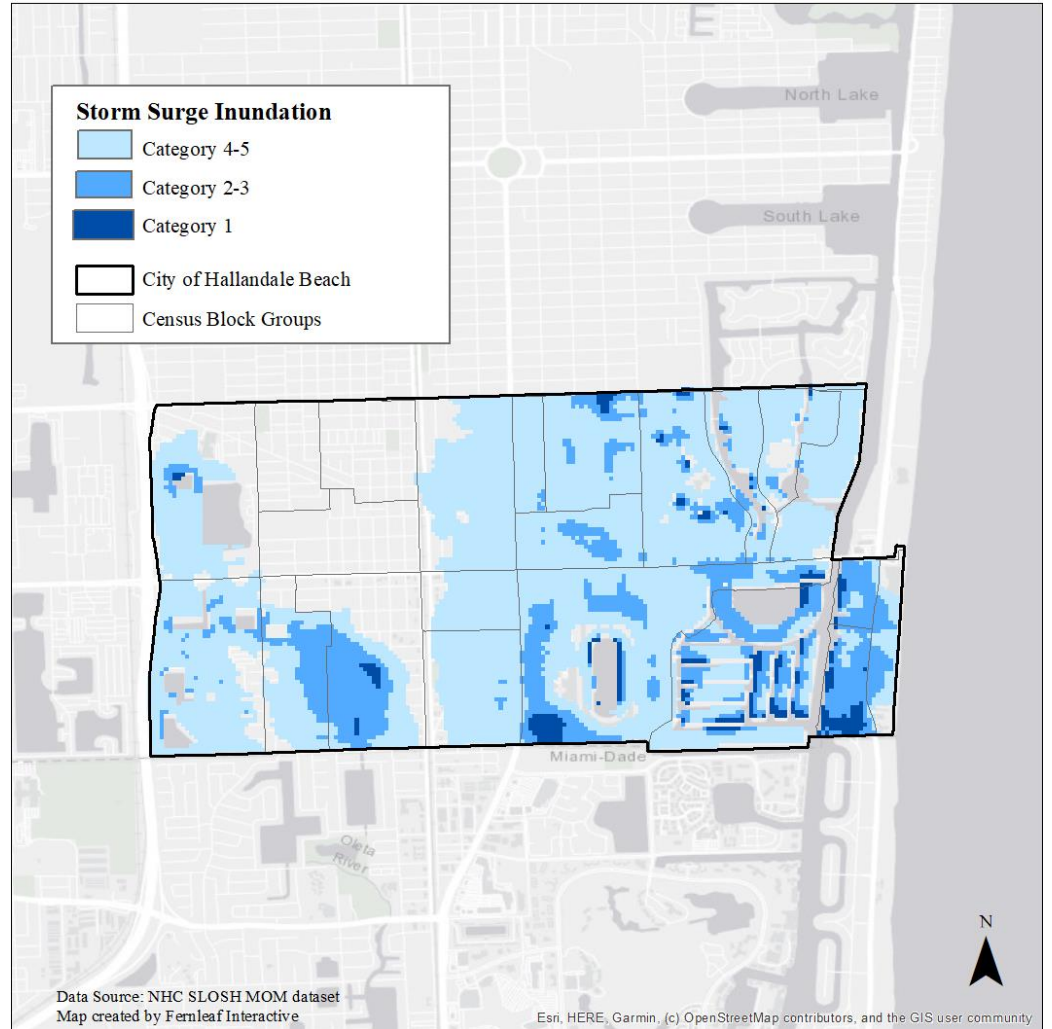
FEMA Flood Zones



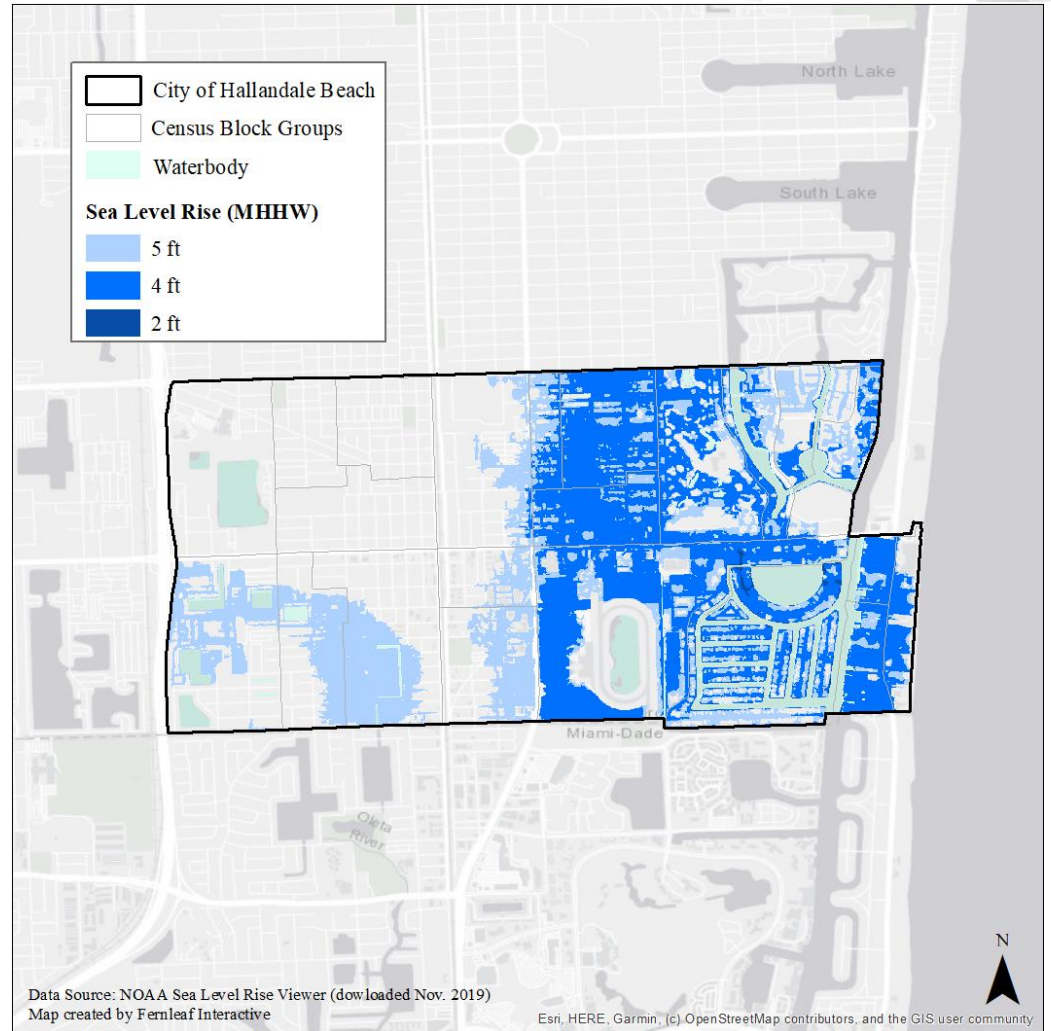
Tidal Flooding (current conditions)



Storm Surge



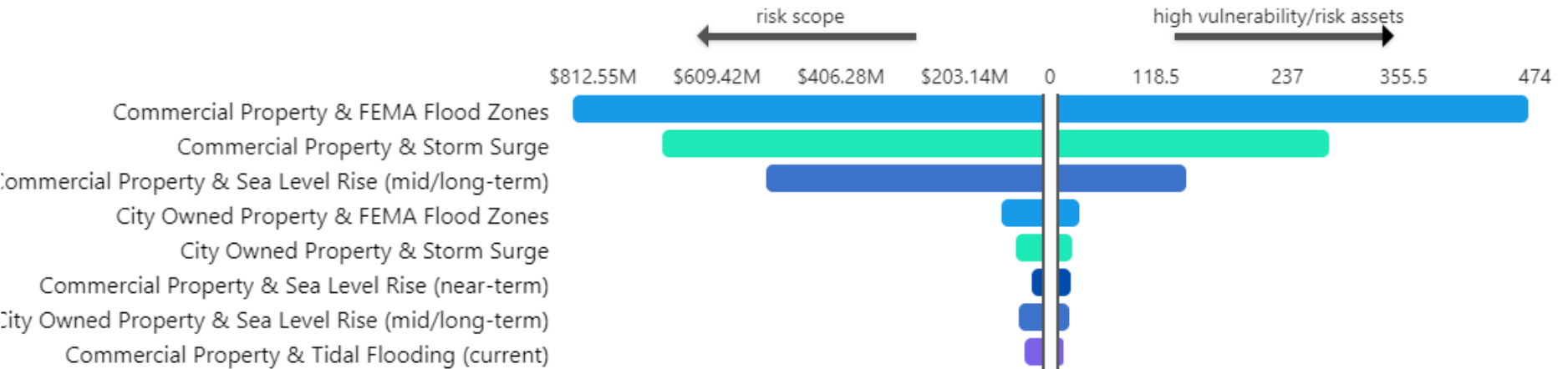
Sea Level Rise (2070)



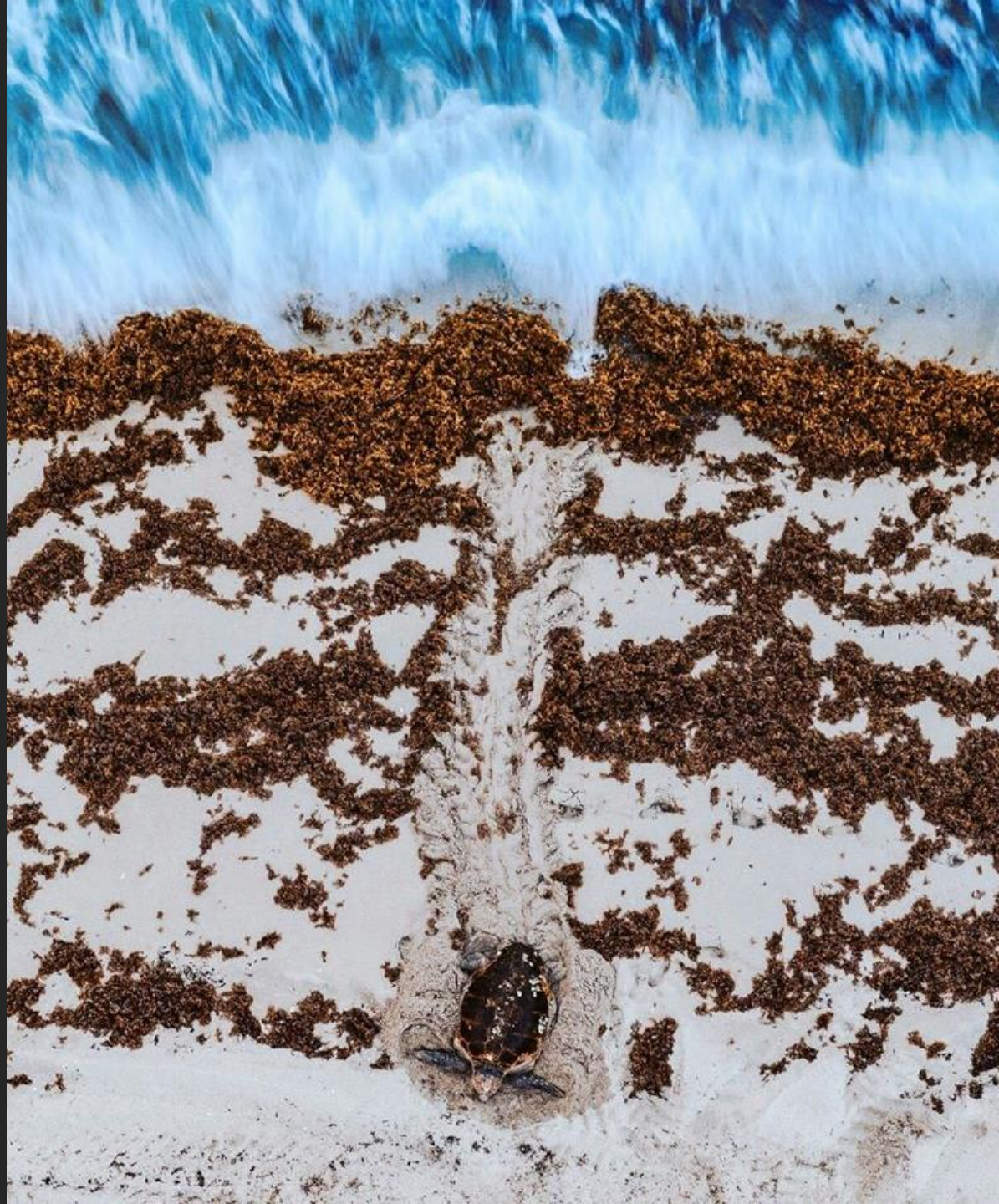
Flood Loss Assessment



Vulnerability and Risk at a Glance



Precipitation,
Groundwater,
& Shoreline
Change



Adaptive Management

Short- and Long-Term Adaptation Projects



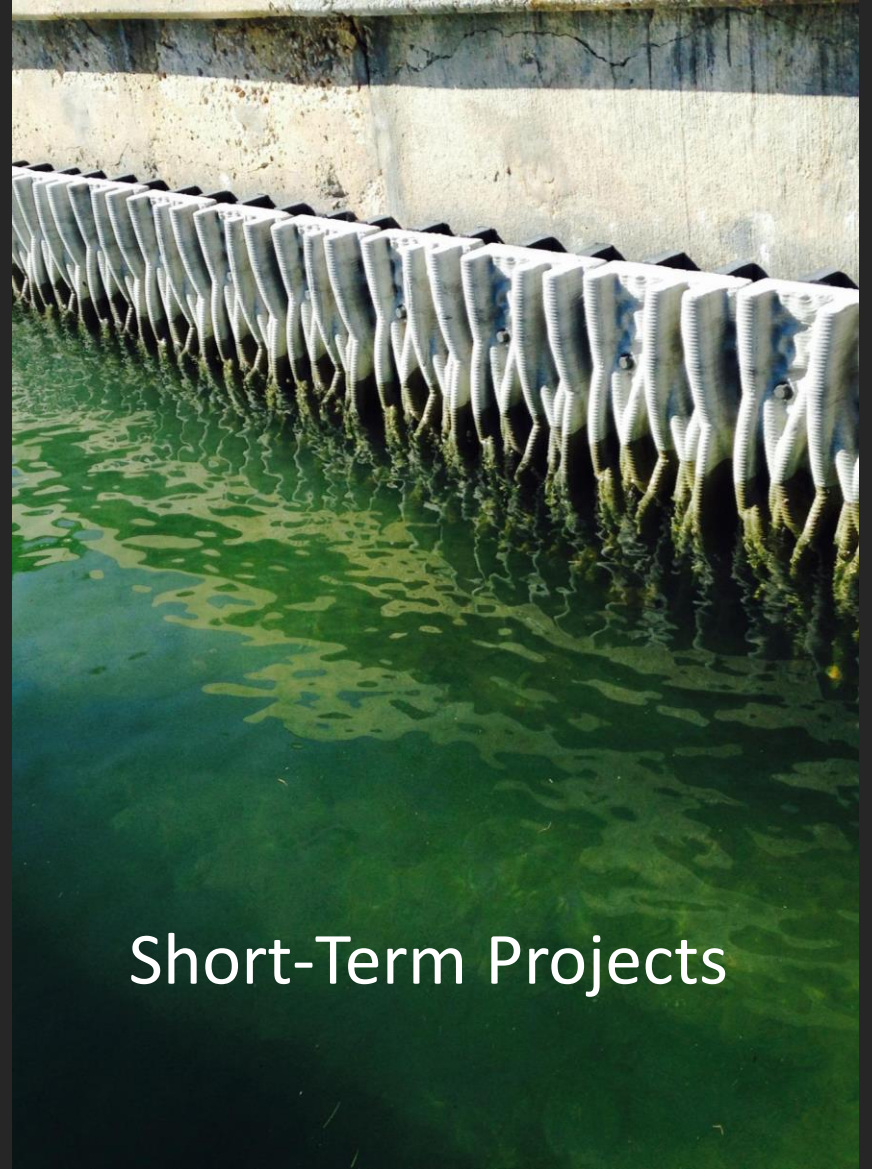
Short-Term Projects

- 2000 S. Ocean Resilient Dune Access
- Egret Lift Station Rehabilitation
- Marine Seawall Rehabilitation
- City Cemetery Mausoleum
- Tidal Check Valves for Stormwater Outfalls
- Low-Impact Development along NE 12th Ave



Long-Term Projects

- Resilience Hub
- Low-Income Floodproofing Assistance
- Raising Critical Roads and Bridges
- Relocating Municipal Complex



Short-Term Projects

Long-Term Projects





Questions?
Thank you.