



# Joseph Scavo Park Perimeter Fence Project Update





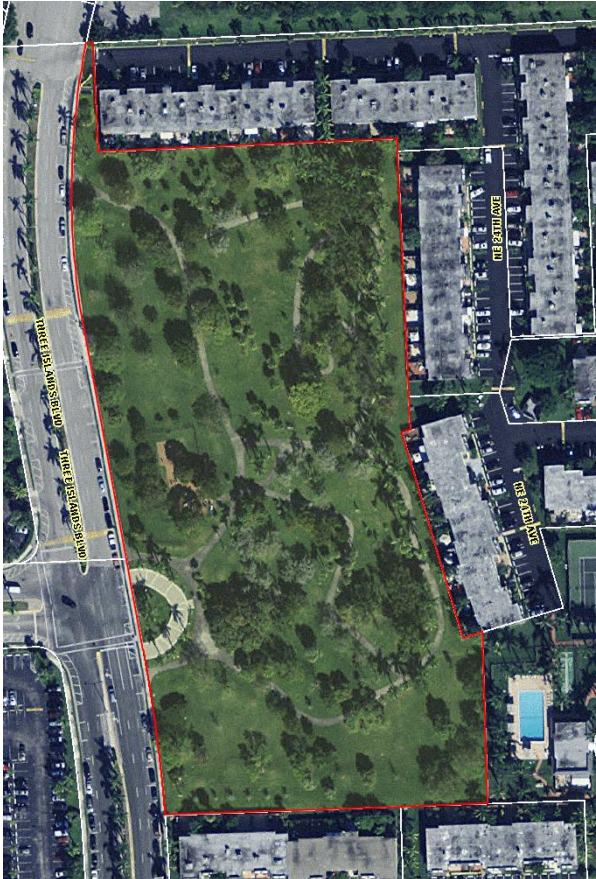
# Agenda

- History
- Challenges
- Funding and Approval
- Fencing Placement & Styles
- Next Steps

# History

- Property Acquired July 21, 1973
- Easement to Trustees – Northerly Portion April 24, 1974
- Park Ribbon Cutting April 5, 2014

2013



2024



# History (Continued)



In September 2016 Crime Prevention Through Environmental Design (CPTED) surveys were completed of the Venetian Park and Joseph Scavo Park properties. CPTED is a proactive crime fighting technique in which the proper design and effective use of parks, open spaces, building(s) and the surroundings lead to a reduction in crimes as well as an improvement in the quality of life for citizens of the community.

## Excerpts from from the September 2016 CPTED Surveys Recommendations:

- **Venetian Park**

Recommendation: Adjacent to Venetian Park is a local Community Park (Scavo Park). This park has six different access points into Venetian Park. I *recommend that all six entrances be closed off to the general public and be replaced by access-controlled gating.*

- **Joseph Scavo Park**

The park has many ways in, and it has 6 direct entrances to a neighboring community (Venetian Park). It is *recommended that these access areas are fenced to minimize external traffic through the nearby community.* These areas provide easy access in and out of the community for potential criminal activity, making good ambush points between the buildings, and making it difficult to determine who does and does not belong in the Venetian Park neighborhood. While the openness of the park is convenient for the residents of the community, it is easy for unwanted guests to access the community from the park. Access controlled gates would control the flow of pedestrian traffic, while still providing the ease of access for the residents of the community.



# Challenges - Calls for Service (CFS)

## Police Calls for Service:

- 49 Calls for Service Outside Park Hours
  - 2020: 17
  - 2021: 7
  - 2022: 3
  - 2023: 4
  - 2024: 13
  - 2025: 4
- 11 Calls for Service During Park Hours
  - 4 Sleeping in Parks
  - 4 Graffiti
  - 3 Masks/ Social Distancing (20/21)

Calls for Service are in addition to daily 'Clearing the Zone' Activities by Hallandale Beach Police and Park Security Checks by Park Rangers.

| Call #        | Call Type            | Notes   | Date / Time      | Location               |
|---------------|----------------------|---|------------------|------------------------|
| 282001002573  | 14-INFORMATION       | SUSPICIOUS PERSON WALKING AROUND                          | 1/27/2020 16:58  | 900 THREE ISLANDS BLVD |
| 282001002978  | 14-INFORMATION       | PEOPLE YELLING AFTER HOURS                                | 1/31/2020 19:29  | 900 THREE ISLANDS BLVD |
| 282001002983  | 74-RECALL            | SUSPICIOUS PERSON WALKING AROUND                          | 1/31/2020 19:56  | 900 THREE ISLANDS BLVD |
| 282002005383  | 14-INFORMATION       | PEOPLE IN PARK WHEN CLOSED                                | 2/24/2020 12:35  | 900 THREE ISLANDS BLVD |
| 282002005601  | 13P-SUSPICIOUS PERSO | PEOPLE PLAYING BASKETBALL AFTER CLOSE                     | 2/26/2020 14:14  | 900 THREE ISLANDS BLVD |
| 282003007747  | 68-POLICE SERVICE CA | PEOPLE IN PARK WHEN CLOSED                                | 3/17/2020 14:23  | 900 THREE ISLANDS BLVD |
| 282003007772  | 68-POLICE SERVICE CA | PEOPLE IN PARK WHEN CLOSED                                | 3/17/2020 18:39  | 900 THREE ISLANDS BLVD |
| 282003007848  | 68-POLICE SERVICE CA | PEOPLE IN PARK WHEN CLOSED                                | 3/19/2020 18:05  | 900 THREE ISLANDS BLVD |
| 282003007940  | 68-POLICE SERVICE CA | PEOPLE IN PARK WHEN CLOSED                                | 3/20/2020 17:46  | 900 THREE ISLANDS BLVD |
| 282003008021  | 68-POLICE SERVICE CA | PEOPLE IN PARK WHEN CLOSED                                | 3/20/2020 19:47  | 900 THREE ISLANDS BLVD |
| 282003008030  | 68-POLICE SERVICE CA | PEOPLE IN PARK WHEN CLOSED                                | 3/21/2020 14:35  | 900 THREE ISLANDS BLVD |
| 282003008092  | 68-POLICE SERVICE CA | PEOPLE IN PARK WHEN CLOSED                                | 3/21/2020 17:07  | 900 THREE ISLANDS BLVD |
| 282003008101  | 68-POLICE SERVICE CA | PEOPLE IN PARK WHEN CLOSED                                | 3/21/2020 21:00  | 900 THREE ISLANDS BLVD |
| 282003008130  | 68-POLICE SERVICE CA | PEOPLE IN PARK WHEN CLOSED                                | 5/31/2020 14:14  | 900 THREE ISLANDS BLVD |
| 282006015044  | 14-INFORMATION       | PEOPLE NOT SOCIAL DISTANCING                              | 6/9/2020 20:15   | 900 THREE ISLANDS BLVD |
| 282006016013  | 14-INFORMATION       | PEOPLE IN PARK WHEN CLOSED                                | 7/12/2020 15:47  | 900 THREE ISLANDS BLVD |
| 282007019182  | 51-TRESPASSING       | PEOPLE IN PARK WHEN CLOSED                                | 8/31/2020 11:18  | 900 THREE ISLANDS BLVD |
| 282008024215  | 14-INFORMATION       | PEOPLE IN PARK WHEN CLOSED                                | 12/26/2020 18:47 | 900 THREE ISLANDS BLVD |
| 282012035668  | 22-DISTURBANCE/NOIS  | PEOPLE NOT WEARING MASKS                                  | 12/26/2020 20:02 | 900 THREE ISLANDS BLVD |
| 282012035672  | 68-POLICE SERVICE CA | JUV'S IN PARK WHEN CLOSED                                 | 1/15/2021 18:31  | 900 THREE ISLANDS BLVD |
| 282101001464  | 14-INFORMATION       | SOMEONE SLEEPING ON PLAYGROUND                            | 1/18/2021 15:15  | 900 THREE ISLANDS BLVD |
| 282101001750  | 22N-DISTURBANCE-NOIS | JUV AT PARK WHEN CLOSED                                   | 1/19/2021 19:55  | 900 THREE ISLANDS BLVD |
| 282101001891  | 14-INFORMATION       | JUV'S CAUSING DISTURBANCE AFTER CLOSE                     | 5/8/2021 8:24    | 900 THREE ISLANDS BLVD |
| 282105012956  | 68-POLICE SERVICE CA | PEOPLE IN PARK WHEN CLOSED                                | 7/18/2021 19:49  | 900 THREE ISLANDS BLVD |
| 282107020294  | 22N-DISTURBANCE-NOIS | PEOPLE IN PARK SCREAMING ALL NIGHT                        | 12/8/2021 19:26  | 900 THREE ISLANDS BLVD |
| 282112034333  | 22N-DISTURBANCE-NOIS | PEOPLE IN PARK WHEN CLOSED                                | 12/9/2021 19:09  | 900 THREE ISLANDS BLVD |
| 282112034444  | 22N-DISTURBANCE-NOIS | PEOPLE PLAYING BASKETBALL AFTER CLOSE                     | 12/11/2021 18:36 | 900 THREE ISLANDS BLVD |
| 282112034636  | 22N-DISTURBANCE-NOIS | PEOPLE IN PARK WHEN CLOSED                                | 12/30/2021 19:22 | 900 THREE ISLANDS BLVD |
| 282112036311  | 68-POLICE SERVICE CA | PEOPLE IN PARK WHEN CLOSED                                | 1/6/2022 23:40   | 900 THREE ISLANDS BLVD |
| 282201000604  | 68-POLICE SERVICE CA | PEOPLE IN PARK WHEN CLOSED                                | 1/20/2022 0:32   | 900 THREE ISLANDS BLVD |
| 282201001811  | 51-TRESPASSING       | SOMEONE SLEEPING AT PARK                                  | 4/26/2022 21:11  | 900 THREE ISLANDS BLVD |
| 282204012068  | 22-DISTURBANCE/NOIS  | SIGNAL 20 IN PARK AFTER HOURS                             | 8/4/2022 8:46    | 900 THREE ISLANDS BLVD |
| 282206016057  | 68-POLICE SERVICE CA | LOUD MUSIC AFTER HOURS                                    | 2/7/2023 19:34   | 900 THREE ISLANDS BLVD |
| 282206023096  | 68-POLICE SERVICE CA | LOUD MUSIC AFTER HOURS                                    | 3/12/2023 21:07  | 900 THREE ISLANDS BLVD |
| 2823002004307 | 22N-DISTURBANCE-NOIS | VAGRANTS SLEEPING NEAR PLAYGROUND                         | 8/30/2023 20:03  | 900 THREE ISLANDS BLVD |
| 2823003008440 | 20-MENTALLY ILL PERS | JUV - SHOOTING GEL BLASTER GUN - NIGHT                    | 3/15/2024 7:57   | 900 THREE ISLANDS BLVD |
| 282308025958  | 22N-DISTURBANCE-NOIS | JUV'S SCREAMING AT NIGHT AFTER CLOSE                      | 4/4/2024 20:20   | 900 THREE ISLANDS BLVD |
| 282308029498  | 38V-DOMESTIC DISTURB | JUV'S RIDING SCOOTERS AT NIGHT AFTER CLOSE                | 4/14/2024 1:19   | 900 THREE ISLANDS BLVD |
| 282403006895  | 14-INFORMATION       | JUV'S BREAKING SOCCER AT NIGHT AFTER CLOSE                | 5/12/2024 21:09  | 900 THREE ISLANDS BLVD |
| 282404011434  | 31-ASSAULT           | JUV'S SCREAMING AT NIGHT AFTER CLOSE                      | 6/14/2024 19:08  | 900 THREE ISLANDS BLVD |
| 282404012485  | 37-DISTURBANCE JUVEN | JUV'S SCREAMING AT NIGHT AFTER CLOSE                      | 7/23/2024 22:34  | 900 THREE ISLANDS BLVD |
| 282405015637  | 68-POLICE SERVICE CA | ADULTS ARGUING AFTER CLOSE                                | 10/19/2024 21:23 | 900 THREE ISLANDS BLVD |
| 282406019667  | 14-INFORMATION       | JUV'S SCREAMING AT NIGHT AFTER CLOSE                      | 11/9/2024 21:49  | 900 THREE ISLANDS BLVD |
| 282407023985  | 14-INFORMATION       | JUV'S SCREAMING AT NIGHT AFTER CLOSE                      | 11/18/2024 22:45 | 900 THREE ISLANDS BLVD |
| 282410033235  | 22N-DISTURBANCE-NOIS | JUV'S SCREAMING AT NIGHT AFTER CLOSE                      | 11/17/2024 21:00 | 900 THREE ISLANDS BLVD |
| 282411035489  | 22N-DISTURBANCE-NOIS | JUV'S SCREAMING AT NIGHT AFTER CLOSE                      | 11/28/2024 6:06  | 900 THREE ISLANDS BLVD |
| 282411036220  | 14-INFORMATION       | JUV'S SCREAMING AT NIGHT AFTER CLOSE                      | 11/26/2024 22:29 | 900 THREE ISLANDS BLVD |
| 282411036321  | 22N-DISTURBANCE-NOIS | GRAFFITI  | 11/30/2024 4:52  | 900 THREE ISLANDS BLVD |
| 282411037285  | 37-DISTURBANCE JUVEN | GRAFFITI  | 12/8/2024 19:00  | 900 THREE ISLANDS BLVD |
| 282411037374  | 14-INFORMATION       | JUV'S SCREAMING / PLAYING BASKETBALL AT NIGHT AFTER CLOSE | 12/17/2024 10:56 | 900 THREE ISLANDS BLVD |
| 282412038624  | 68-POLICE SERVICE CA | OFFICERS OUT W/ JUV'S AT NIGHT                            | 12/29/2024 22:39 | 900 THREE ISLANDS BLVD |
| 282412039594  | 40-VANDALISM/MALICIO | JUV'S SCREAMING AT NIGHT AFTER CLOSE                      | 1/25/2025 22:49  | 900 THREE ISLANDS BLVD |
| 282412040914  | 40-VANDALISM/MALICIO | JUV'S CAUSING A DISTURBANCE AFTER CLOSE                   | 1/28/2025 20:23  | 900 THREE ISLANDS BLVD |
| 282501002829  | 14-INFORMATION       | GRAFFITI  | 2/7/2025 21:01   | 900 THREE ISLANDS BLVD |
| 282501003168  | 37-DISTURBANCE JUVEN | GRAFFITI  | 2/8/2025 21:15   | 900 THREE ISLANDS BLVD |
| 282502004432  | 22N-DISTURBANCE-NOIS | GRAFFITI  | 3/16/2025 11:09  | 900 THREE ISLANDS BLVD |
| 282502004537  | 37-DISTURBANCE JUVEN |   | 3/17/2025 11:56  | 900 THREE ISLANDS BLVD |
| 282503009048  | 40-VANDALISM/MALICIO |   |                  |                        |
| 282503009194  | 40-VANDALISM/MALICIO |   |                  |                        |

# Challenges - Clearing the Zone and Security Checks



The Three Islands Safe Neighborhood District Patrols Joseph Scavo Park Daily.  
Park Ranger Staff Patrols Joseph Scavo Park Daily during open times.

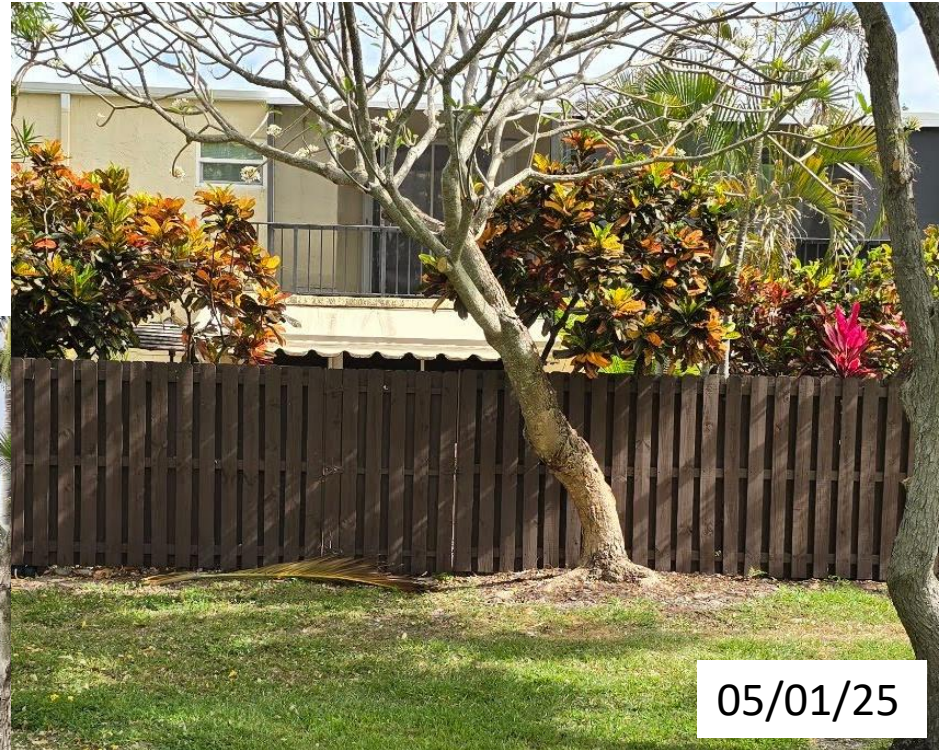
*The most common Patrol issues are:*

- Pets in Park
- Bicycles, Electric Scooters, Electric Bikes driven through Park
- Garbage/ Yard Waste brought/ thrown into park by adjacent neighbors
- Refusal to Leave at Closing/ Return after Closing



# Challenges – Clearing the Zone and Security Checks

Garbage/ Yard Waste brought/ thrown into park by adjacent neighbors





# Challenges – Clearing the Zone and Security Checks

## Pets in Park

- Unleashed
- Waste left in Park
- Disagreements between Park Users





# Challenges – Clearing the Zone and Security Checks

## Minibikes, Electric Scooters, Electric Bikes in Park

- Damaging Park Property
- Driven Recklessly On Park Sidewalks





# Challenges – Safety Concern

## Post Storm

- Access During Flooding Events





# Funding



## FY 2024-2025 Commission Annual Action Plan - Infrastructure and Mobility

Develop and maintain resilient infrastructure and sustainable mobility solutions that support the growth of the City, improve connectivity, and enhance the overall quality of life for the community.

|                           |        |           |                                     |  |
|---------------------------|--------|-----------|-------------------------------------|--|
| Infrastructure & Mobility | FUNDED | \$300,000 | Joe Scavo Park<br>Perimeter Fencing | The City has allocated \$300k to install perimeter fencing around the boundary of Joe Scavo Park to secure the park after hours. |
|---------------------------|--------|-----------|-------------------------------------|--|

## FY 2024-2025 Budget Appropriation

# Fencing – Other Parks – Adjacent Private Property Separation



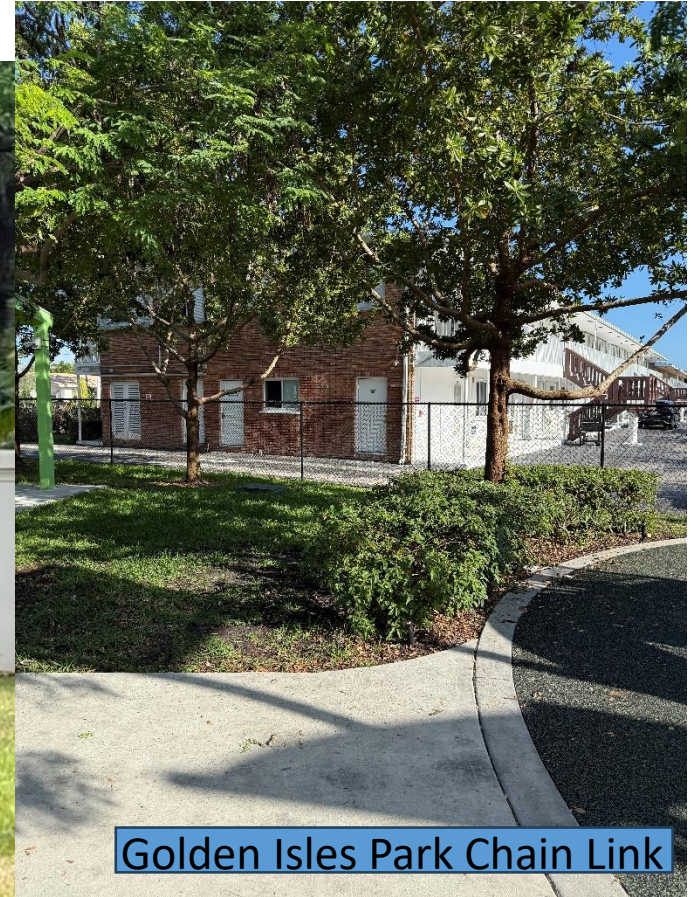
Sunrise Park Stockade

Also Curci and Sunset Parks



Ingalls Park Wall

Also MLK Plaza



Golden Isles Park Chain Link

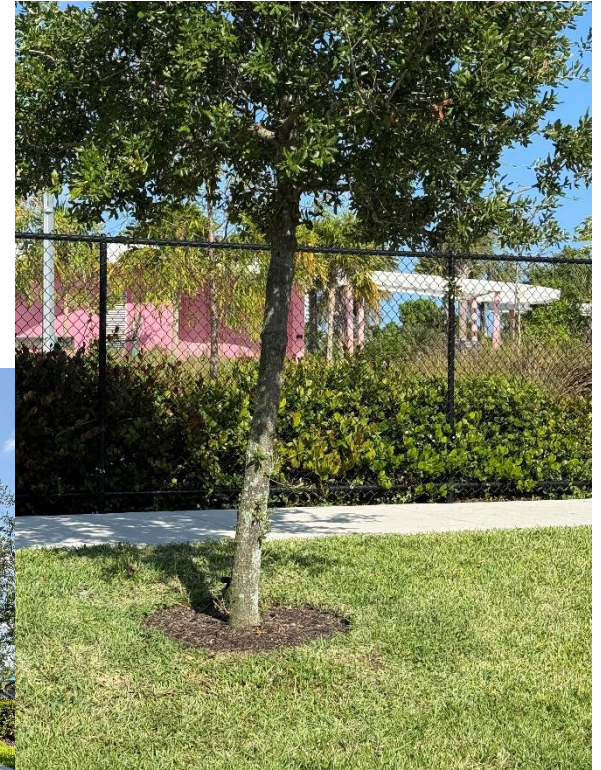
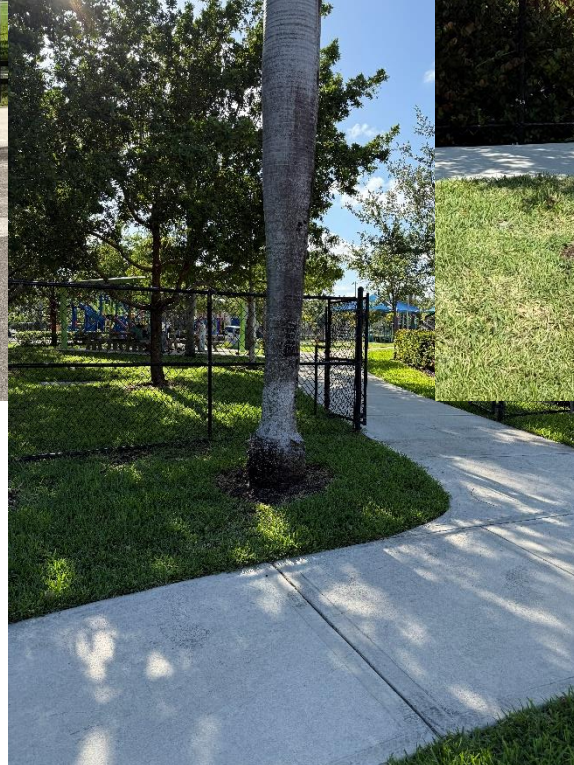
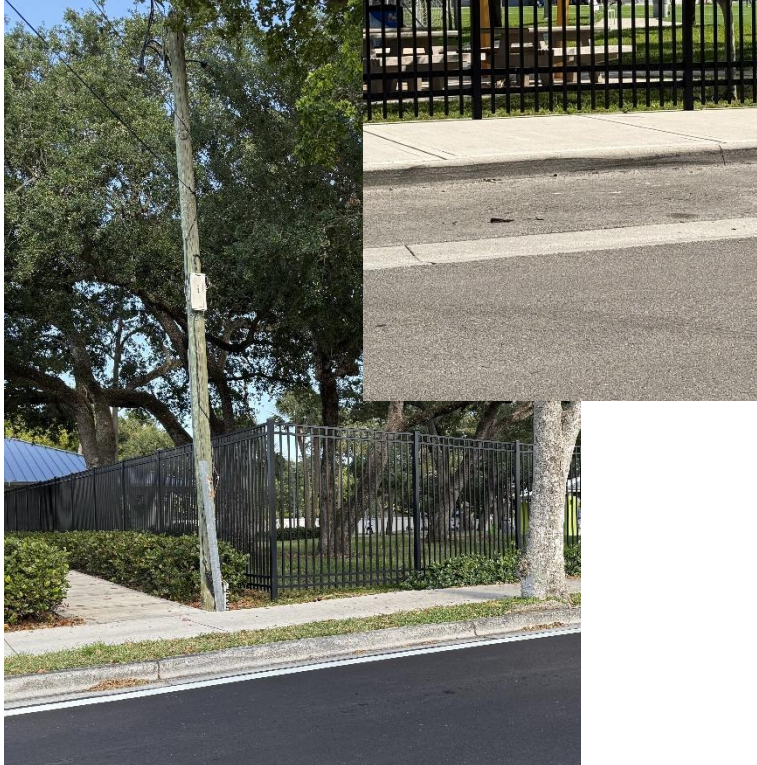
Also Golden Isles Tennis Center  
and Chaves Lake

South City Beach and North City Beach Parks are separated from the adjoining private properties by various means on neighbor's property including Walls, Partial Walls with Chain Link Top, and landscaped Aluminum fencing.



# Fencing – Other Parks - Perimeter Park Fences

Aluminum



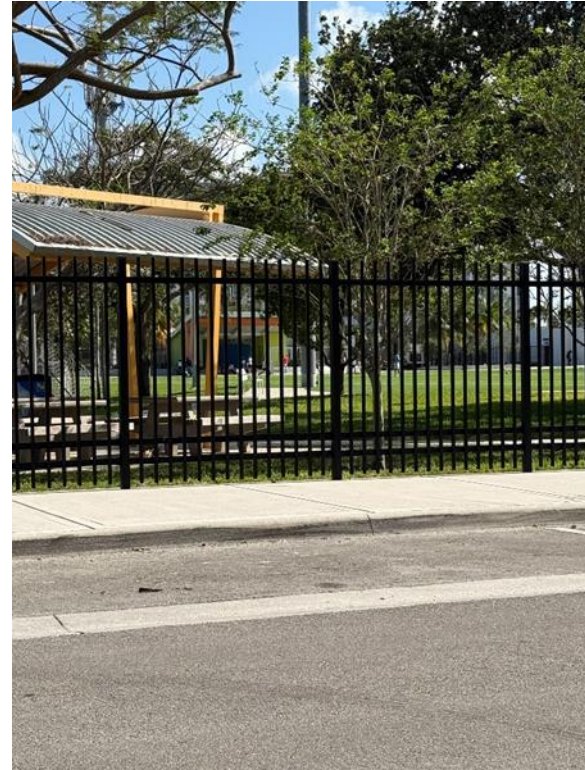
Vinyl Coated  
Chain Link



# Fencing - Styles



Vinyl Coated Chain Link  
North, South, East

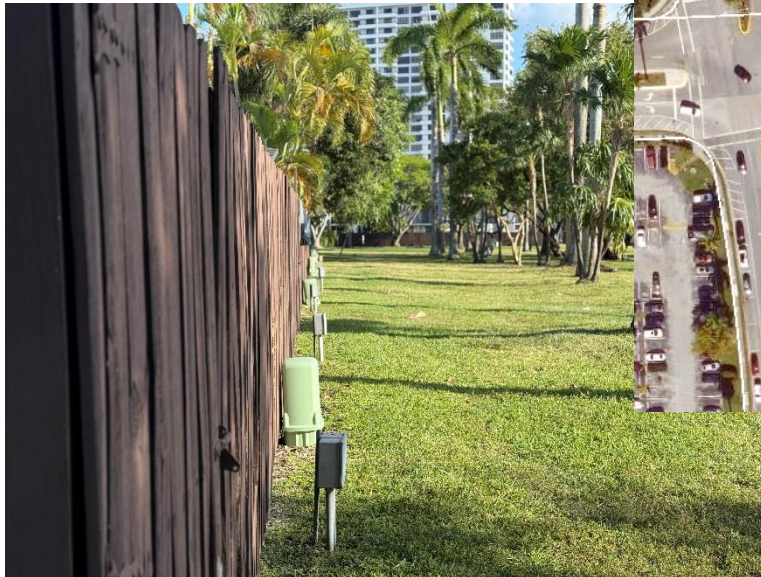


Aluminum  
West/ Three Islands Blvd



# Fencing - Placement

- Connect to Dog Fences
- Gates at Walk In Accesses on Three Island Boulevard
- Exact Placement to be determined
  - Survey last done in 2013
  - Adjacent property's stockade fence appears to be on the property line
  - Adjacent property's utilities appear to be on Park property



# Next Steps

- Survey Verification of property line
- Decision regarding easement/ access lane/ placement
- Procure
- Install

## Questions?

